

C. J. LEARY & SONS, Inc., PRINTERS



FALL RIVER, MASSACHUSETTS

The Durfee Record

19



28

Published by the Class of 1928

B. M. C. Durfee High School



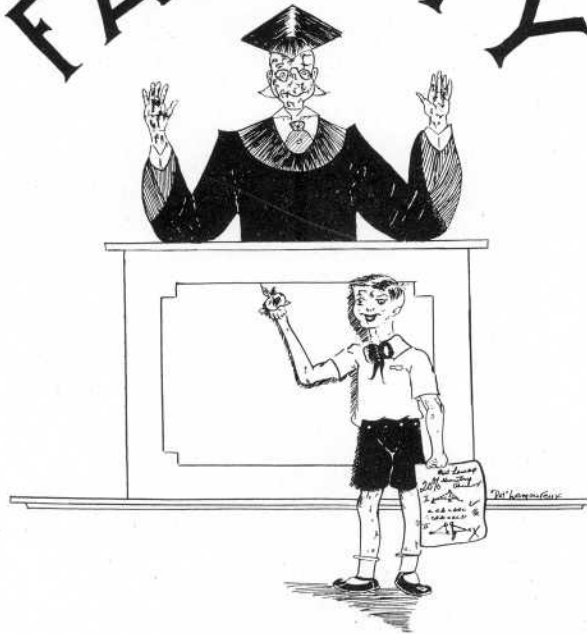


To

Miss Emily Winward, our beloved
and respected teacher, in her last
year at Durfee, is this book
fittingly dedicated by the
Class of 1928.



FACULTY



Principal

CHARLES V. CARROLL

VICE PRINCIPALS

RALPH M. SMALL

JOSEPH A. WALLACE

Allard, Louis A.
Allen, Ralph C.
Andrus, Don F.
Anton, George F.
Ashley, Myron T.
Baker, Gertrude M.
Becker, Charles J.
Bent, Eugenie W.
Brightman, Ernest L.

Campbell, Emily
Caron, Marie E. A.
Carpenter, Mary L.
Carroll, Herbert A.
Carroll, Joseph O.
Carroll, Mildred V.
Chase, Winifred F.
Chisholm, William J.
Churton, Ethel



Cleare, William M.
Coggeshall, Dexter E.
Collins, Helen S.
Connors, Mary B.
Cook, Berton E.
Corrigan, Helen M.
Coyle, George F.
Crocker, Louise S.
Cummings, James L.
Cyr, Rosamonde P.
Davis, E. Christine
DesMarais, Louise E.
Dolan, Mary A.
Dow, Ruth N.
Duffy, Andrew L.
Dwyer, Agnes C.
Earle, Charles C.
Foulkes, Carrie T.
French, Henry F.
Galvin, Patricia
Garwood, Ralph M.
Gerken, Edna A.
Gormley, Lillian M.
Gottwald, Frederick J.
Grant, Grace M.
Harlow, Mabel
Hickey, Helen M.
Hilliard, Nellie S.
Hoffman, Lillian L.
Jouett, Blanche I.
Judge, Mary E.
Judge, Vera
Lane, Frank D.
Langford, Alice G.
Laporte, Louise C.
Lavelle, Mary A.
Lynch, Harry P.

Macdonald, Margaret
MacMillan, Adelia
McCarty, Anna G.
McHale, Rose E.
McIntyre, J. Henry
Miles, E. Estelle
Mitchie, George A.
Morse, Nelson C.
Newkirk, Rught W.
O'Keefe, Catherine E.
Orcutt, Leslie W.
Pickup, Herbert W.
Pratt, F. Antoinette
Ramsay, Mabelle E.
Rhodes, Agnes K.
Robbins, Mabel S.
Ryan, Marion
Seagrave, Sylvia W.
Shea, Henry J.
Shurtleff, Bertrand L.
Smith, Harriet A. M.
Spring, Mabel A.
Sullivan, Daniel J.
Thompson, Marion R.
Torphy, Marion L.
Townsend, Ella L.
Townsend, John M.
Vander, William C.
Vosburgh, Ruby M.
Walsh, Anna F.
Waterfall, Myrtle H.
Wellington, Barbara
Wild, Lawrence W.
Williston, Amasa F.
Winward, Emily E.
Withrow, Helena H.
Woods, William J.





Record Book Officers

CHARLES RYAN, *Editor-in-Chief*

Associate Editors

EDWARD J. MILNE

LESTER M. RADOVSKY

FLORENCE J. KERNESS, *Business Manager*

Associate Business Managers

JOHN J. KERRIGAN, JR.

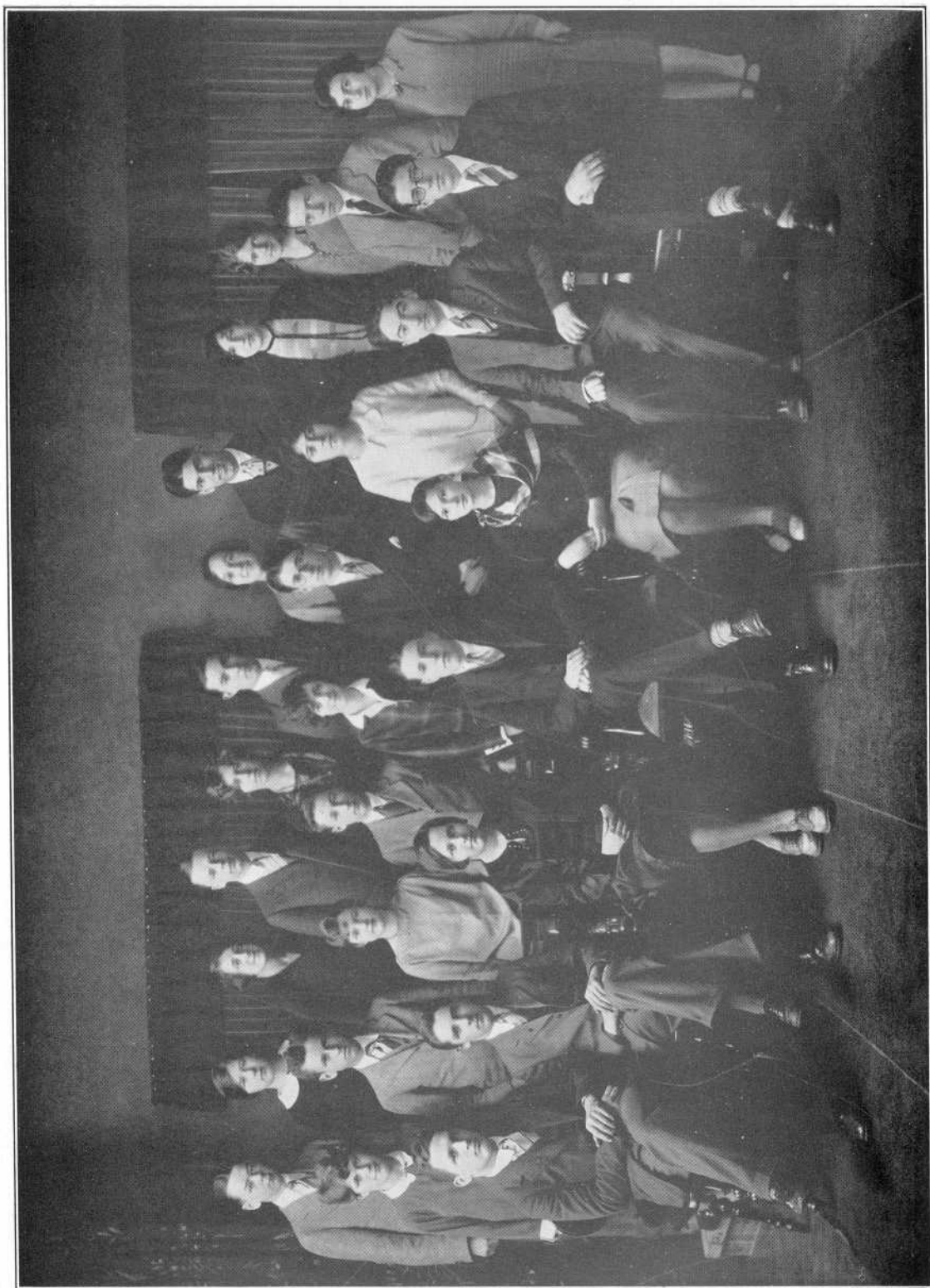
GERTRUDE L. MERCIER

The Record Book Staff

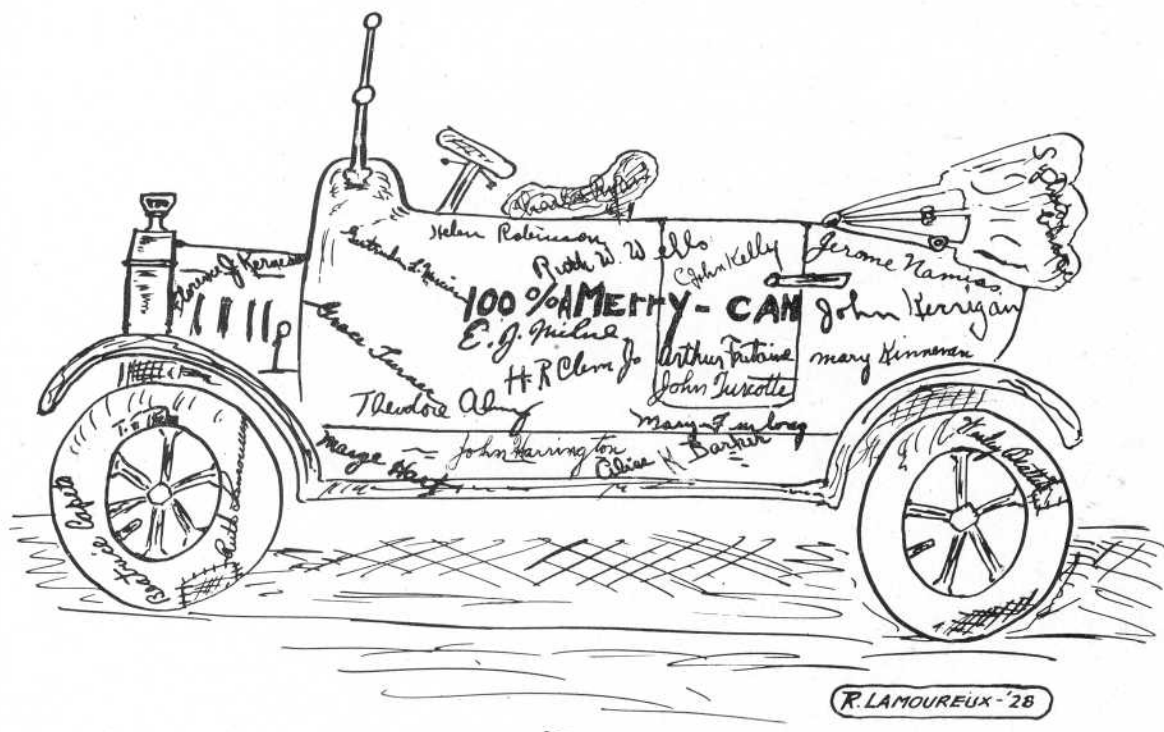
Following the custom of the past few years the senior class elected the Editor and Business Manager of the Record Book. The class of 1928 selected as their editor, Charles Ryan, and as business manager, Florence Kerness, both well fitted for the positions.

Soon after the election Ryan chose Lester Radovsky and Edward Milne as associate editors and with their help selected a staff, while John Kerrigan and Gertrude Mercier were appointed associate business managers.

Each member of the staff was given a specific duty at the first meeting and the organization of the book began to function smoothly.



RECORD BOOK STAFF

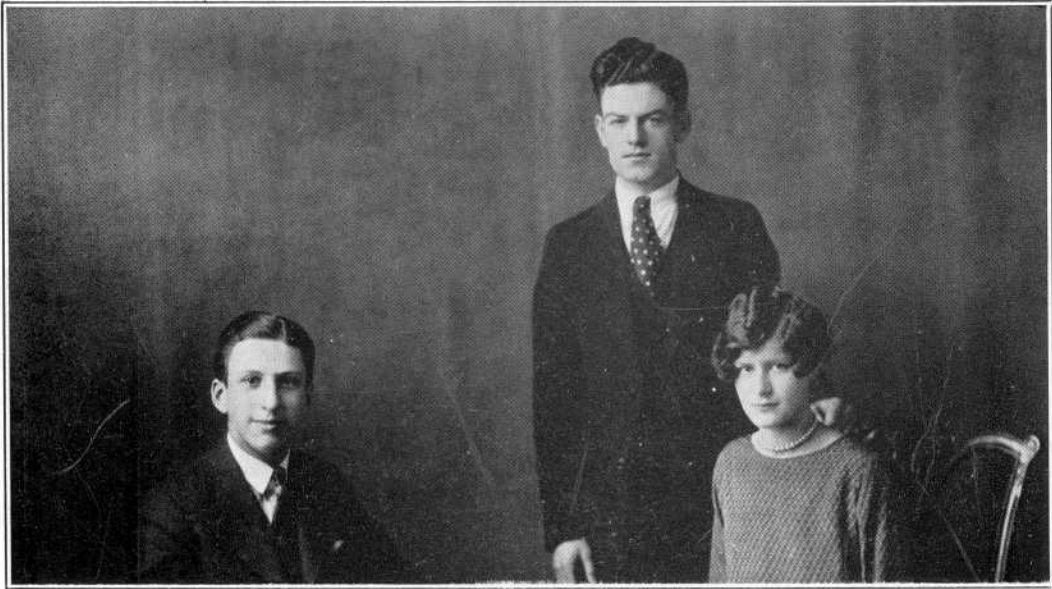




Acknowledgement

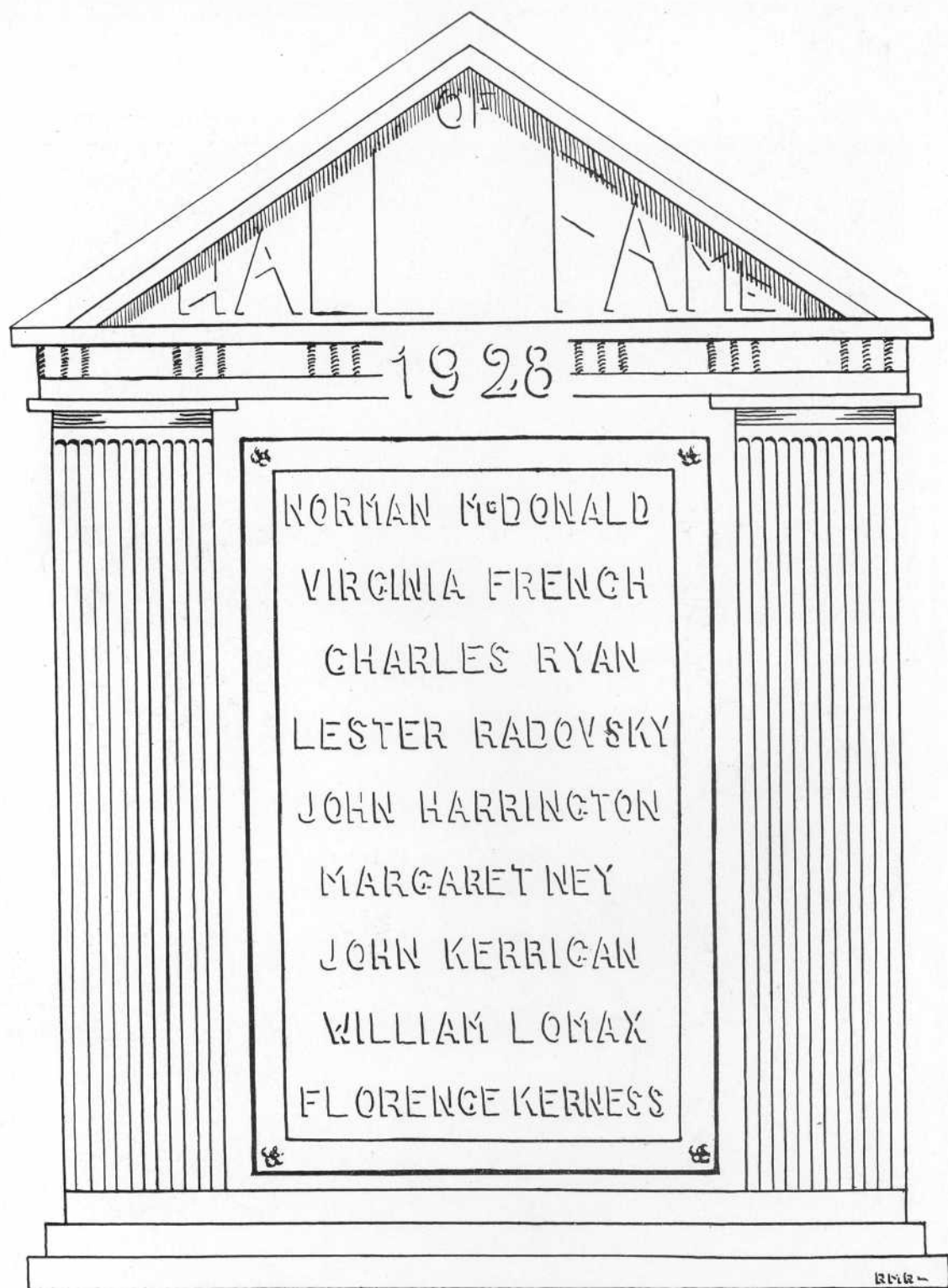
The successful publication of this book is due primarily to the coopération and earnest efforts of the staff and to the faculty advisor, Harry P. Lynch, who has given advice in solving the various problems with which the staff was confronted.

THE EDITOR.



Class Officers

NORMAND McDONALD, *President*
JOHN F. FERREIRA, *Vice-President*
MILDRED H. MALONE, *Secretary*





Ruth Abdelnour

"Ruthie"

Junior Forum
The Forum
G. A. C.
Chemistry Club



Raymond R. Adam

"Ray", "Goose"

Traffic Squad 3, 4



William Robert Adams

"Adamsey", "Bill"

Cadets, 2



William R. Allsop

"Lill"



Theodore B. Almy

"Ted"

Orchestral Club 1, 2, 3, 4
Home Room Director 1
Pin and Ring 3
Cadets 1, 2
Record Book Staff
Junior Forum 1, 2



John Ardagh

"Johnny", "Jack", "Chick"

Commercial Club 2, 3, 4
Chemistry Club 3



May Arnold
"Maisie"



Adelaide Veronica Arruda



Grace Marie Ashworth
Dramatic Club 3, 4
Traffic Officer 2
Glee Club 3



Martha Vette Audette
Commercial Club



Helen Louise Baggett



Daphne May Baker
Traffic 4



Alice Hafves Barker
"Allie"

G. A. C. 3
Home Room Director 3
Senior Dance
Record Book Staff
Pin and Ring 3
Dramatic Club 4



Dorothy Shearman Barker
"Dot" "Dee"



Gladys Margaret Parlous
"Gay", "Glad"
Home Room Director 1



Joseph Dean
"Pulse"



Eleanor Grace Beattie
"El"

Wesley Hall Beattie
"Wes"
Cadets 1, 2
Forum 1, 2
Record Book Staff
Home Room Director 3





Renaldo Gerard Belanger

"Ren"

French Club 2, 3
Football 2
Cadets 1, 2, 3



Leo Irving Belford

"Bel"

Football 2, 3, 4
Track 3



Margaret Bemis

"Margie", "Be"



Gladys Pence



Doris Mills Bieling



David Black

"Blackie"



Dorothy Mae Bily

Commercial Club 3, 4

Edward Bodeau

"Eddie", "Ed"

Home Room Director 3

Dramatic Club 4

Football 4

Track 2, 3, 4



Lucile Florence Bolduc

"Lou"

Dramatic Club 3, 4

French Club 2, 3

Basketball 1, 2

Annie Standish Borden

"Riki", "Andy"

Basketball 1, 2

G. A. C. 1, 2

Dance Committee 3

Dramatic Club 4



Jennie May Borden

"Jane"

Dramatic Club

Commercial Club

Louise Borden

"Weezie"

Home Room Director 3

Dramatic Club 4





Margaret Borden
"Margie"



Viola Borden
"Vi"
Home Room Director 1



Helen Irene Boynton
G. A. C. 1, 2



James F. Brady
"Jimmie"
Basketball 1, 4
Baseball 1, 3, 4
Home Room Director 1



Colin Brearley
Home Room Director 4



Dexter T. Briggs
"Deck", "Briggsee"



James Britland, Jr.
"Jimmie"



Eleanor Margaret Brown
"Brownie"



James J. Brown
"Brownie"



John Henry Brown
"Fall River Johnny"



Robert Allan Brown
"Brownie"



Mitchell S. Bishara
"Mike"



Augustus T. Bue



Charles Rudolph Cain
"Rudy"



William J. Cantwell
"Bill", "Katsy"
Dramatic Club 3, 4



Beatrice Capeto
"Bea"
French Club 3
Record Book Staff 4



Muriel Antelia Carr
"Kiddy Kar"
Home Room Director 2
Basketball 2
Dramatic Club 3, 4
Glee Club 4



Raymond M. Carr
"Ray"



Alice Carreiro



James M. Casey
"Irish", "Splasher", "Curly"
Home Room Director
Basketball
Baseball



Carol Elizabeth Chace



Marjorie Ruth Chace
"Margie"



Sylvia Chace
"Syl"

Basketball
Hockey 1, 2 3
Dramatic Club 3, 4
Pin and Ring 4
Record Book Staff 4
G. A. C. 1, 2 3
Home Room Director 1, 3
Junior Forum



Willard Chace
"Peckir", "Billy"
Hi. Y.



Mrs. May Cheetham
"Perky"



Augustus John Christopher
"Chris"



William Clinton Clark
"Bill"



Dorothy Helen Cleary
"Dot"



Herbert R. Clem, Jr.
"Herb", "Jr."

Tennis Capt. 3
Record Book Staff 4
Chairman Gift Com. 4
Dramatic Club 4



Ramona Doloris M. Conroy
"Mona"

Commercial Club 2, 3, 4
Penmanship Club 2, 3
Girls' Athletic 2



Frank Constance
"Connie"



Genevieve Patricia Corbett
"Gen"
Girls' Athletic Club



Mary Elizabeth Corcoran
"Mae"
Commercial Club 2, 3, 4



Jennie Anna Coriaty
"Jane", "Bubbles"



Lena Cornell
"Lee"
Home Room Director 2
G. A. C. 2
Junior Forum 1



Alexander Felix Cote
"Alec"
Track 3
Football 4
Home Room Director 2
Traffic Squad 4



Normand Louis Cote

"Norm"

Dramatic Club 3, 4
French Club 1, 2
Chemistry Club 3
Home Room Director 1, 2, 3



Catherine M. Coughlin



Edward M. Coughlin

"Ed"

Junior Forum 1
Home Room Director 1, 2
Dance Committee 1, 3



Mary Margaret Crosson



Thomas Patrick Cullen

"Tom"

Football 4
Home Room Director 2, 4



Ruth Elizabeth Cyr

"Ruthe"

Home Room Director 2
Glee Club 4
Dramatic Club 3
Councillor 3
Forum 2, 3, 4
Traffic 2, 3



Frances Eugenie Daley
"Fran"



Gladys Dashoff
"Glad", "Gladdy"
Dramatic Club 3, 4



Grace Dashoff
"Gracie"
Dramatic Club 3, 4



Roy Asa Davenport, Jr.
"Davey"
Record Book Staff



Effie Clinton Davis
"Ef"
Commercial Club



Melba Frederick Davis
"Mel"



William Waite Davis, Jr.
"Bill", "Billy"



Ella Elsa DeAmicis
Dramatic Club 4



Anna Laura DeBonis
"Ann"



Ruth Mary Delaney
"Rudy", "Rufus"
Junior Forum



Adele Gertrude DeMarco
"Dell"



Hugo C. DeNault
"Frenchy", "Five Yards" "Arg"
Capt. Football 3 years



James Francis A. DeMaola
"Jem"

Commercial Club 2, 3, 4



Frank Desmond
"Des"

Football 3, 4
Basketball 4



Lauretta Azilda Desrochers



Doris Devine
"Dot", "Dotty"

French Club 1
Traffic Squad 3
Home Room Director 3



Frederick Deecher DeWnap
"Freddy", "Dew"



Germaine Elsie Dion
"Jerry"

Commercial Club 3, 4



Ruth Elizabeth Dixon
Dramatic Club



Dorothy Anthony Dodge
"Dot"

Glee Club 2
G. A. C. 1, 2, 3
Girls' Hockey 1, 2
Home Room Director 4



Lucille Yolande Domingue
"Lou"
French Club 2, 3



William Thomas Donnelly
"Bill"



Helen Louise Donohan



Edwin F. Doolan
"Eddie"
Cadets



Grace Rita Doran
Secretary S. A. A. 2
Home Room Director 3
Councillor 3
French Club 2, 3



Margaret Genevieve Doran
"Peg"



Dorothy Isabelle Drape
"Dot"



John Beattie Driscoll
"Jack", "Pic"



James Henry Duffy
"Jimmy"



Alice Mary Duggan
"Allie"



1

9



Lillian C. Dunlop

"Lil", "Peanuts"

G. A. C. 1, 2, 3
Hockey 1, 2
Baseball 1, 2
Basketball 1, 3

Paul R. Dunn



Effie Brayton Durfee

"F"

Leonard Durfee

"Len"

Football
Commercial Club



Madeline Gladding Durfee

"Naline"

Evelyn Marie Dutra

"Ev"



2

8



William Roscoe Fabenson
"Bill"

Traffic Squad 2, 3
Capt. Traffic 4
Gift Committee 4



Doris Mary Edwards
"Dot", "Eddy"

Vice Pres. Commercial 3
Pres. Commercial 4
Glee Club 4



Josephine Doris Edwards
"Dot"



George Arthur Emmett
"Art", "Em"



Mildred Louise Evans
"Millie"



James Augustus Fairhurst
"Jimmie"



1

9



Helen Patricia Hanning
"Pat"



James Edward Fell
"Jimmie"
Chemistry Club 1, 3
Councillor S. A. A. 1, 3



John F. Ferreira, Jr.
"Johnny"
Chemistry Club 3
Vice President 4



Agnes Fish
"Al"



Alice Louise Fitzgerald
"Al", "Ally", "Fitzie"
Chemistry Club 3



Evelyn Mary Flanagan
"Evie"

2

8



Doris Elizabeth Fleet
"Dot"



Charles Patrick Flynn
"Flynnny", "Charlie"



Arthur LeBoeuf Foley
"Art"

Cadets 1
Junior Forum 1
Football 4
Track 4



Gertrude Winifred Foley
"Gert", "Gerry"

Nursing Club 2, 3
Chemistry Club 3



Louise Adeline Foley

G. A. C. 2
Home Room Director 2
Senior Forum 4



Arthur H. Fontaine, Jr.
"Junie"

Home Room Director 2



1

9



Irene Lauretta Forcier
"Renie", "Laurette", "Lou"
Commercial Club



Anna R. Fortin
Commercial Club



Elithia Mable Fozzard
Chairman Dance Com. 4



Iola Mildred Francis
"I", "Swansea"
Commercial Club
Dramatic Club



Mario C. Franco
"Morty", "Phil"



Louis Freedman
"Zip"
French Club 3
Basketball 4
Chemistry Club 3

2

8



Margaret Louise French

Virginia Frances French

"Gin", "Ginny"

Home Room Director 2, 3
Vice Pres. S. A. A. 3
Pres. S. A. A. 4
Secretary Class 1
Dramatic Club 3, 4
Glee Club 3, 4
Forum 3



M. Arlene French

"Frenchy"

Home Room Director 1, 2, 4
Dramatic Club 3, 4
Glee Club 3, 4

Hazel Minda Friedburg

"Hay"



Margaret Mary Furlong

Record Book Staff
French Club 3
G. A. C. 1, 2
Basketball 1, 2
Junior Forum 1

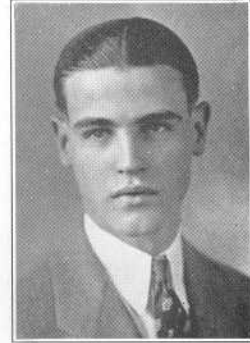
Mary E. Furze

Athletic Club 1, 2
Basketball 1
Hockey 2





Joseph Gallery
"Joe"



Raymond Francis Garrahy
"Ray"



Arline Frost Gaskill
"Sport", "Al"



Elsa Gersch



Kathleen Claire Gilligan
"Kitty"
Commercial Club 2, 3, 4



Edith Elizabeth Gladu
"Dedie", "Edie"



Irene Gaff



Ruth Fuller Golden



Myer Gollis

Chemistry Club 3
Orchestral Club 2, 3, 4
Junior Forum



Sadie Mae Gould

"Sally"

Dramatic Club 3, 4
French Club 2



Margaret Louise Grondin

"Peg"

Commercial Club 2, 3, 4
Penmanship Club 2, 3
Dramatic Club 3, 4
Orchestral Club 4
Pin and Ring 4
Traffic Squad 3



Dorothy Claire Guillotte

"Dot"

Vice Pres. Athletic 3
Hockey 1, 2, 3
Baseball 1, 2, 3
Basketball 1, 2, 3
Cheerleader 4



Lois Ella Hacking



Fred Hallas
"Tippie"



Ruth Lillian Halliday

"Ruthie"

Commercial Club 2, 3, 4



Gertrude Mary Hanley

"Gert", "Gertie"

French Club 2



Irene Hannon

"Renie", "I"



Catherine Paschal Harrington

"Kay"

French Club 2



John Cornelius Harrington

"Johnny"

S. A. A. Councillor 2
Home Room Director 2, 3, 4
Delegate B. C. League 3
Athletic Manager 4
Record Book Staff 4



Dorothy Harrison

"Dotty"

French Club 3
Orchestral Club 3, 4



Dorothy J. Harrison

"Dot"

Forum



Laura Eba Hart



Margery Hart

"Marge"

Home Room Director 1, 2
Dance Committee 2, 3
Traffic Squad 2, 3
Record Book Staff



Edward Francis Hathaway

"Ned"



Emily A. Hathaway

"Emmy"

G. A. C. 1
Traffic Squad 2, 3
Dramatic Club 4



Genevieve Regina Hathaway

"Gen"



Mildred Irene Hazard



Elizabeth Helen Heap

"Betty"



Moroni Heap

"Mac", "Speed"



Dorothy Alice Heflin

"Dot"



Frank Hellitwell
"Tarzan", "Big Boy"
Football 4
Dramatic Club 4



Alice Marie Hennessey
"Al"
Science 1



James Alfred Higginbotham
"Jim", "Legs"
Football 4
Track 3, 4
Home Room Director 1, 2



Florence Loretta Higgins
"Let"
Commercial Club 3, 4



Anna Lucy Holleran
"Ann"



Bernice Franklyn Holmes
"Bunny"
Commercial Club 3, 4



Agnes Murray Hornby

Dramatic Club 1, 4



Dorothy May Hoyle

"Dot"

Secretary 2
Dramatic Club 3, 4



Fred Barker Hutchins

"Fred"

Dramatic Treas. 3; Pres. 4
Home Room Director 2, 4
Commercial Club 3, 4
Traffic 2, 3, 4



Solomon Isenberg

"Sol", "Shlime"

Forum 3
Science Club 1



Louise A. Jackson

"Lee"



Alma Jennings

"Al"

Girls' Athletic Club



Flora A. Jette
"Flo"



Harold Raymond Jones
"Haroldteen"



James Augustus Judge
"Jimmie"



Ethel Kahan
"Ette"
Commercial Club 2, 3, 4
Vice Pres. Penmanship



Edward Kalsman
"Ed", "Kal"
Orchestral Club



Anna Patricia Kane
"Ann", "Tim"
French Club 2



Jacob Kane
"Jack", "Jake", "Kanny"



Charlotte Kaplan
Dramatic Club 3, 4



Albert Edward Kay
"Al"



John Daniel Kaylor
"John D."
Track 4



Gertrude Roberta Keating
"Gert"



Thomas William Keefe
"Tom", "Tommy"
Football 3, 4



George Kennedy
"Ken"



Ella Ruth Kelleher
Home Room Director 2, 4



John Robert Kelley
"Red"
Chemistry 3
Baseball 2, 3



Genevieve Monica Kelly
"Jerrie"
French Club 2



Gerard Majella Kelly
"Jerry", "Kelly"



Howard Patrick Kelly



Robert Stanleigh Kenney
"Bob"



John Patrick Kenney
"Jack"
Home Room Director 2



Florence June Kerness
"Flo", "Flossie"
Bus. Mgr. Record Book
Dance Committee 2
Pin and Ring 3
Junior Forum 1, 2; Senior 3, 4
French Club 2, 3
Glee Club 3, 4



John J. Kerrigan, Jr.
"Johnny"
Asst. Bus. Mgr. Record Book 4
Vice Pres. Junior Forum 1
Pres. Junior Forum 2
Forum Debating Team 2
President of Class 2
Sergt.-at-Arms Forum 3, 4
Debating Team 3, 4



Dorothy Elma Kershaw
"Dot"

George Carlton Kessler
"Georgie", "Mal"
Orchestra 1, 2, 3, 4
Traffic Squad 2, 3
Commercial Club





Lillian Bernice Kessler

"Lil"

Commercial Club



Leslie Howard King

"Les"

Dramatic Club 3, 4

Treas. Dramatic Club 3



Mary Margaret Kinnehan

"Mae", "Kinny"

Home Room Director 2

Record Book Staff 4

French Club 3

Traffic Squad 3

Athletic Club 3



Margaret Irene Kirby

"Peg"

G. A. C.
Forum



Josephine Mary Krupa

"Joe", "Jose"

Glee Club 4

Commercial Club 3, 4

Commercial Club Treas. 4



Mary Constance Lahy

"Connie"

Glee Club 2

Traffic Squad 3



Milton Lambert

Cadets 1
Traffic Squad 2, 3, 4



Dorothy Corinne Lamoureux

"Dot", "Twinnie"

G. A. C. 1, 2
Dance Committee 2, 4



Ruth Cynthia Lamoureux

"Twinnie"

Home Room Director 1
G. A. C. 1, 2
Dance Committee 2
Record Book Staff



Gertrude Laurel Landy

"Gert", "Ginger"

Dramatic Club 3, 4
Debating Club 2
French Club 3



Dorothy Marie Langfield

"Dot"



Gloria F. LaPointe

"Glo", "Lan"

French Club 2, 3



Rudolph L. Labault

"Pat"

Dramatic Club



Dolores Laboie

"Doll", "Fitzie"



Christiana Lawrence



Alden Wilbur Latason

"Bus"



Everett Hartley Leach

Orchestral Club



Marion Louise Leary

"Mitzie"

Glee Club



Wright Titton Lees

"Wrong"

Margaret Frances Lenaghan

"Peg"

Home Room Director 1
Commercial Club 1, 2, 3, 4



Eva Shirley Lebine

"Eve", "Kid"

Leonard Lebiss

"Len"

Junior Forum 1, 2
Forum 3, 4
Cadets 1, 2
Track 4



Doris Gertrude Lidman

"Liddy", "Dot"

French Club 2
G. A. C. 1
Junior Forum 2

Hilton Sanford Lidman

"Micky", "Liddy"

Baseball 1
Basketball 1
French Club 2





Agnes Claire Lomax
Home Room Director 2, 3, 4



William J. Lomax
"Bill"
Baseball 2, 3, 4
Basketball 2, 3, 4, Capt. 4
Football 4
Home Room Director 2, 4



Margaret Mary Lotzney
"Peg", "Peggy"
Dramatic Club 2, 3



Joseph Lubin
"Yarkum"



Sara Shirley Lucobe
"Sal", "Lou"



Anne Marie Lynch
"Toots"
Dramatic Club 3, 4



Charlotte Lynch
"Charlie"



Nora M. Lynch
"Do", "Dodo"



Gertrude Ann Lynch
"Gert"



Ernest T. Lyne
"Ernie", "Bud"



Edith R. Machado



Edwin Macy
"Ed"
Junior Forum 2
Chemistry Club 3
Basketball 4



John M. Madden
"Why Worry Manager"
Cadets 1



Henry Hagan
"Mack"
Commercial Club Secretary
Traffic Officer



Catherine Margaret Malone
"Kitty"



Lillian Loretta Malone
"Lil"
Girls' Athletic Club 2
French Club 3



Mildred Henrietta Malone
"Millie"
Junior Forum 1
G. A. C. 1, 2, 3
Secretary of Class 3, 4
Basketball 1, 2
Dramatic Club 3, 4
Traffic Squad 2, 3



Edward Manchester
"Ed", "Manny"
Commercial Club
Traffic Officer



John Ellsworth Manchester

"Johnny", "Jack"

Chemistry Club 3
Traffic Squad 4



Raymond Arthur Manning



Esther Arline Marsland

"Arl"



Charlotte May Martin

"Charley"

Traffic Squad 3, 4



Virginia H. Martin

"Gin", "Ginny"

Home Room Director 2



Isadore Mattlin

"Matt", "Izzy"

Orchestral Club 2, 3, 4



Osiembia Jennie Mauretti
"Lee"



Frances Bates McCann
Glee Club 4



Norman McDonald
"Norm", "Mac"
President of Class 3, 4
Capt. Debating Team 3, 4
Cadets 2, 3
Home Room Director 2
Senior Forum 3, 4
Pin and Ring 3, 4
Junior Forum 2
Social Committee 3, 4



Joseph E. McGuigan
"Mac", "Joe"



Ruth Estelle McHugh
"Ruthie"
G. A. C. 1, 2, 3
Chemistry Club 3
Forum 4



William F. McHugh
"Mac"
Dramatic Club 4
Traffic Squad



Edward J. McKenney

"Mac"

Baseball
Traffic Squad



Margaret Cecelia McKnight

"Peg", "Mickey"



John Francis McPartland

"Mac", "Dinty"

Home Room Director 1, 2, 3
Baseball 4
Record Book Staff



Teresa Gertrude McPartland

"Tessie", "Mac"

French Club 1



Sarah Gertrude Mercer

"Sadie"



Gertrude Leanna Mercier

"Gert"

Associate Bus. Mgr. Record Book
Vice Pres. Freshman Class 1
Home Room Director 1, 2, 4
Junior Forum 1
French Club 2, 3
Glee Club 3, 4



Hugh Wilson Miller

"Hughie"

Junior Forum
Orchestral Club



Dorothy Broton Mills

"Dot", "Dotty"

Home Room Director 4



Edward Jamieson Milne

"Eddie", "Eee Jay"

Chairman Pin and Ring 3, 4

Home Room Director 1

Junior Forum 1, 2

French Club 2

Associate Ed. of Record Book



Mildred Jean Milne

"Jean", "Jeannie"



Armand Minkin

"Babe"

Cadets 1

French Club 2

Orchestral Club 1



Armin Minkin

"Hutch"



Bessie Mintz



Antonio Vibeiros Miranda

"Fat"

S. A. A.
Commercial Club



Catherine Miriam Moffatt

"Kit"

G. A. C.
Forum



Frank M. Moffitt

"Bus"



Mildred Morgan



William Henry Moriarty

"Bill", "Mac"

Dramatic Club



William Francis J. Morrissey

"Bill"

Football



Ruth Habel Morse

"Mousey"



Elwin Dennison Mortimer

"El", "Mort"



Madison Morton

"Mat"

Record Book Staff
Gift Committee
Lieut. Traffic Squad



Margaret Miriam Mullaney

"Peg"



Eleanor Margaret Mullaney

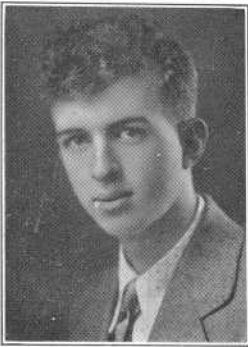
Home Room Director 2, 3



Hazel Josephine Munroe
"Hadie"
G. A. C.



Helen Elizabeth Murphy



Herbert A. Murphy
"Herb", "Curly"



Marie Alice Murphy
"Ree"



Mary J. Helena Murphy



Ruth Alice Murray



Thomas H. Nabh, Jr.
"Nibby"



Robert J. Nagle
"Bob"
Cadets 3



Jerome Namias
"Jerry"
Orchestral Club 3, 4
Senior Dance Committee 4
Traffic Squad 2
Record Book Staff



Mildred Veronica Newbury
"Billy"



Adeline H. Newman
"Ade"
Commercial Club 3, 4



Margaret Cecelia Ney
"Peggy"
Vice Pres. Class 2, 3
Councillor S. A. A. 4
Dramatic Club 4
Senior Forum 2, 3, 4
Sec. Senior Forum 4
Dance Committee 4



Francis Noonan



James Coughlin Noonan



Mary C. Norton

"May"

Home Room Director 2



Stanley M. Nowak

"Stan"

Chemistry Club



James O'Brien



John Oliver, Jr.

"Jack"



Mary Katherine Oliver

"Mae"

French Club
Glee Club
Dramatic Club



Cornelius Edward O'Neil

"Ed"



Emily Madeline Pacheco



Hubert Clinton Hadelford

"Yuk"



Frank A. Panullo

"Pansy"

Track 2, 3
Home Room Director 2



Marcel Howard Paradis

"Mars"

Track 3, 4



Katherine Deane Hardee

"Kay"

Esther Jeanne Harkman

"Ess"

Sec. Treas. Penmanship Club 2
Commercial Club 2, 3, 4
Record Book Staff 4
Hilltop Staff 4
Glee Club 3, 4
Junior Forum 2



Russell Francis Hartridge

"Russ"

Everett B. Hatterson

"Pat"



Edward Francis Hayton

"Ed"

Home Room Director 1, 2
Basketball 2, 4

Rita Rose Heckobitz

"Peck"

Dramatic Club





William H. Helton

"Doc", "Bill"

Dramatic Club 4
Forum 4
Football 3
Basketball 1, 4



Elizabeth Mary Whalen

Commercial Club



Thomas F. Whelan, Jr.



Adrien Edward Pickle
"Polly"



Camilla Chathburn Pickering



Mildred Louise Pickup

"Bugs"

Commercial Club
Girls' Athletic Club



Ruth Barbara Pickup

"Babs"

Commercial Club 3, 4



John Pimental

"Pimp", "Cheese"

Cadets 1
Traffic 2, 3



Margaret Pimental

Edith Frances Pokross

"Ed", "Pokie"

Home Room Director 2
Glee Club 3, 4
Forum 1, 2
French Club 2, 3



Harry Posnak

"Puzzy"

Chemistry Club
Dramatic Club 4
Junior Forum
Traffic Squad 3



Linus M. Powers

Dramatic Club 3, 4
G. A. C. 1, 2
Girls' Basketball 1, 2



Lena Rita Praffa

"Bobbie"

Basketball 1
G. A. C. 1, 2
Traffic Squad 2, 3
Junior Forum 1, 2
Dramatic Club 3, 4



Harry Jacob Prebluda

"Proff"

Orchestral Club 1, 2, 3, 4
Glee Club 4
Chemistry Club 3
French Club 3
Junior Forum 2
Senior Forum 4



Edward Prescott

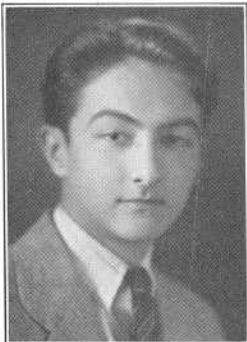
"Ed", "Eddie"



Frederick Lincoln Quinn

"Quinnie"

Orchestral Club 1, 2
Home Room Director 3
Associate Ed. Hilltop 4
Councillor S. A. A. 4
Traffic Squad 4



Lester Myron Radobsky

"Les"

Forum Junior 1, 2; Senior 4
Hilltop Staff 3, 4
Associate Editor 3
Editor-in-Chief 4
Record Book Staff
Associate Editor 4
Traffic Squad 2, 3
Cadets 1, 2



Mary Raposa

"Mickey"

G. A. C.



Raymond Riendeau

"Smiley", "Prof"

Traffic Squad 1, 2, 3, 4
Home Room Director 1, 2, 3
Commercial Club 1, 2, 3, 4
Dramatic Club 2, 3
Basketball 1, 2



Irene Frances Riley

"Renie"



Raynor Riley



Dorothy Roach



Helen Robinson

Home Room Director 1, 2, 3, 4
Dramatic Club 3; Sec. 4
Glee Club 2, 3; Treas. 4
Forum, Junior 1, 2; Senior 3
Orchestral Club 2
French Club 3
Record Book Staff



Marion Robinson



Miriam Elizabeth Robinson
"Tinnie"



Mary Catherine Roden
"Mayre"



Harold Caswell Ross
"Rosy"

Charles Ryan
"Charlie"

President of Class 1
Forum, Junior 1, 2; Senior 4
Debating Team 4
Home Room Director 4
Dance Committee 3
Editor Record Book 4
Cadets 1, 2



John Edward Thomas Ryan
"Rosy"

Orchestral Club 1, 2, 3, 4

Mary Agnes Ryan
"Babe"

Dramatic Club
French Club





Bessie Lillian Sacknoff

"Betty"

Commercial Club 3, 4



Ailsa M. Salmond

"Mae"

Glee Club 4
Dramatic Club 3, 4



Loreta Marie Sample

"Tex", "Lou"

Dramatic Club 2, 3
Orchestral Club 1
Junior Forum 1, 2
Forum 3, 4
Sec. Junior Forum 2
G. A. C. 1, 2, 3
French Club 1, 2
Cheer Leader 4



Irving Sapadin

"Irv"

Traffic Squad 1, 2
Cadets 2, 3



Francis Schneider

Saul Oscar Schwartz

"S. O. S.", "Pug", "Sol"





Daniel Shalloo



Gladys Marian Shannon

"Glad"

G. A. C. 2, 3
French Club 2, 3
Forum 3



Caroline Shapiro

"Carry"

Pres. Penmanship Club 2
Home Room Director 2
Commercial Club 2, 3, 4
Dramatic Club 3, 4
Traffic Officer 2
Junior Forum 1, 2
G. A. C. 1, 2



Helen Gertrude Shea



Viola Louise Sheehan

"Vi"

French Club 1, 2
Glee Club 4
Forum 4



Janet Deane Sherman

"Jan"

Glee Club
Athletic Club



Mildred Shobelson
Commercial Club 3, 4



Edward A. Silbia
"Ed", "Eddie", "Ned"
Traffic Squad 2, 3



Alice Imelda Simard
"Al"
Commercial Club



William H. Simister, Jr.
"Simmy"



Virginia Slack



Ida Dora Slabitsky
"I"
Junior Forum 1



Madeline Chackersay Smalley
"Mad"



Ann Marion Smith



Bertram Smith
"Smitty"
Chemistry Club



Charles Smith



Franklin H. Smith
"Smitty"



Mabel Smith



Marion Smith



Mary C. Smith
"May"



Winifred Agnes Smith

"Winnie", "Win"

Forum, Junior 2; Senior 4
Basketball 1, 2, 3, 4
Capt. Junior Team
Baseball 2, 3
Athletic Club 2



Arthur Crawford Snell
"Art", "Chaney"



John E. Soroka
"Sorok"



Antone F. Souza
"Fat"
French Club
Dramatic Club



Manuel Benevides Souza
"Harold Lloyd", "Goggles"



Doris Hope Springer
"Dot"



Archie St. George



Lauretta Vera St. Laurent
"Lou"
Commercial Club
Dramatic Club



Louis St. Laurent
Pin and Ring 4
Junior Forum 1, 2



Albert Arthur Stewart
"Al"
Home Room Director 1, 2
Councillor to S. A. A. 1
Cadets 1, 2



Margaret Mary Stone
"Peg"



Charlotte R. Sudack
"Charl"

Dramatic Club 3, 4
Commercial Club 3



Anna Louise Sullivan
"Sully"

French Club 2



Edward Sullivan
"Irish", "Ted", "Sully"



James Henry Sullivan
"Jimmy", "Sully", "Jazz"



John Sullivan, Jr.
"Sully"

Tennis Team 1
Baseball 2, 3, 4
Football 4



John Lawrence Sullivan
"John L.", "Sully", "Irish"



Louise Ursula Sullivan
"Sully", "Lou"
G. A. C. 2, 3
French Club 2



Mary Louise Sullivan



William M. Sullivan



Helen Christine Sweeney



Sophie Carolyn Szlanda
"So", "Sue"
Chemistry Club 3



1

9



Frank Edward Tansey
Junior Forum



Augustus Thomas Tabis
"Gus"



Harold Earl Taylor



Lillis Mary Taylor
Traffic Squad 3, 4
Dramatic Club 4



Mabel Taylor



Lawrence Everett Terry
"Larry"
Baseball 1, 2, 3, 4

2

8



Beatrice Delia Chibault
"Bee"

Penmanship Club 2, 3
French Club 3



Everett Arthur Thurston, Jr.
"Ev"



Lorraine Frances Tierney
"Lorrie"

Dramatic Club 3, 4



Dennis A. Toomey



John Dennis Turcotte
"Turk", "Johnny"

Home Room Director 4
Councillor S. A. 3
Rep. B. C. League 4
Record Book Staff 4
Forum 3



Grace Hodgson Turner

Home Room Director 2, 3, 4
Chemistry Club Sec. 3
Record Book Staff 4



Wilfred Haudrenil



John David Vaughan
"Vaughnie"

Cadets 1
Home Room Director 2
Junior Forum 1



Edith Alison Verity
"Edee"

Glee Club 2, 4
Dramatic Club 4



William Vincent



John F. Vogel



Alfred Allinson Walton
"Walt"



Milton Albert Ward
"Wardie"



Lawrence Joseph Welch
"Larry"



Ruth Milna Wells
"Ruthie"
Home Room Director 4
Dramatic Club 3, 4
Junior Forum 1, 2
Senior Forum 3, 4
Record Book Staff



Esther Myra West
"Chick"



Harry Mexler
Record Book Staff 4
Chemistry Club 3



Margaret Mary Mahlen
"Peggy"
Forum 1



Norman Francis Whalley
"Norm"

Forum 1, 2, 3
Science Club 1



Dorothy Rose Mary Whitty
"Dot", "Dotty"

Commercial Club
Dramatic Club



Aurora A. Williams
"Ann"

Girls' Glee Club



James Williams



James Richard Williams
"Dick"

Home Room Director



Mary Williams
"Billie"

S. A. A. 2



Edward J. Williamson
"Willy"
Dramatic Club 1
Football 2
Home Room Director 4



Helen Louise Wilson
"Midi"



Charles Winslow
"Chuck"
Home Room Director 4



Thelma Alice Wood
"Woody"
Penmanship Club
Commercial Club
G. A. C.
Junior Forum



Edward F. Wright
"Eddie"



Edward J. Wright



Marion Agnes Wright
"Blonde"



Ruth Gwendolyn Wright
"Babe"



Robert Alfred Wrigley
"Bob", "Al"



George Wiggatt
"Judge"
Tennis Team
Forum 1, 2, 3, 4



Saul Zaslow



Mae Zeldes
Glee Club 3, 4
French Club 3
Junior Forum 1, 2



Joseph Ziobro



Frank Zybura
"Si"

Mildred Bannister

Philip S. Boivin

Gilbert F. Bragdon

Arcade Cornellier

Mary R. Creigh

James J. Cross

Francis M. Doolan

John H. Dunne

Henry Fallows

Joseph David Flanagan

Miriam Feitelberg

Frances Galbao

Israel M. Golden

Charles Judge

William Martin

John Molinsky

Walter G. Moson

Arthur Nabao

Sidney Petergobsky

Daniel Sheahan

Catherine Veronica M. Sullivan

Allen Terry

Alexander Wayda



Autographs

1 Roman McDonald

Tom Ruff '22

Wm. S. ...

Mildred Malone

Frank W. Moffitt

Louis Lipschitz

Israel M. Golden Esq.

"Ed" Payton

Henry Mogan

John K. Morgan

Saul Oscar Schwartz

"Mike" Besharo

Antone Souza.

John R. Kelley

James Lynch

Art W. Hawley

Sylvia Chace

Redefer L. Lavault

William Sullivan

Viola Sheehan

Joe Slavitsky

Iving Sopadin

Ruth Delaney

Frank Desmond

Alvaney F. Cole

Don't Leah

Dick Williams

28 Peg Mc Knight

Helen Robinson

Melba French

Mae K. Oliver

Viola Borden

Harry J. Treble

Charlotte Kaplan

Bessie Mink

"Winnie" Smith

Caroline Shapiro

Alice Simard

James A. Judge

Redefer L. Lavault

Mildred Newbury

Genevieve R. Hattaway

Adrian Edward Piche

Alton W. Lawson

Arthur C. Parao

William Malone

William Pelton

John Harrington

Harold F. Carter '25



In Memoriam

J. HENRY McINTYRE

TEACHER AND HEAD OF MATHEMATICS DEPARTMENT

SEPTEMBER 1916—MAY 1928



Class of 1928

Who's Who

James Fell	Most Agreeable	Winifred Smith
William Lomax	Most Athletic	Dorothy Guilotte
John Harrington	Most Brilliant	Beatrice Capeto
Lester Radovsky	Most Interesting	Lillis Taylor
Madison Morton	Most Dignified	Sylvia Chase
Thomas Phelan	Most Highminded	Madeline Smalley
Edward Milne	Most Talkative	Lauretta Sample
Thomas Phelan	Most Studious	Helen Baggett
Edward Coughlin	Best Dressed	Elithia Fozzard
Edward Payton	Best Dancer	Peggy Ney
Norman McDonald	Most Promising	Gladys Dashoff
Raymond Riendeau	Class Wittiest	Dora Lynch
Hugo Denault	Best Known	Virginia French
John Sullivan	Best Looking	Edith Verity
Norman McDonald	Most Versatile	Virginia French
Herbert Clem	Class Sport	Margaret Grondin
Mitchell Bshara	Class Giant	Emily Hathaway
Norman Cote	Class Midget	Emily Pacheco
James Fell	Class Flirt	Ailsa Salmond
Isadore Matlin	Most Mischievous	Louise Jackson
Raymond Riendeau	Most Original	Arlene French
Hugo Denault	Most Popular	Peggy Ney



The Durfee Forum

EDWARD HANIFY, *President*

NORMAN McDONALD, *Vice-President*

MARGARET NEY, *Secretary*

HARRY CHERNOCK, *Treasurer*

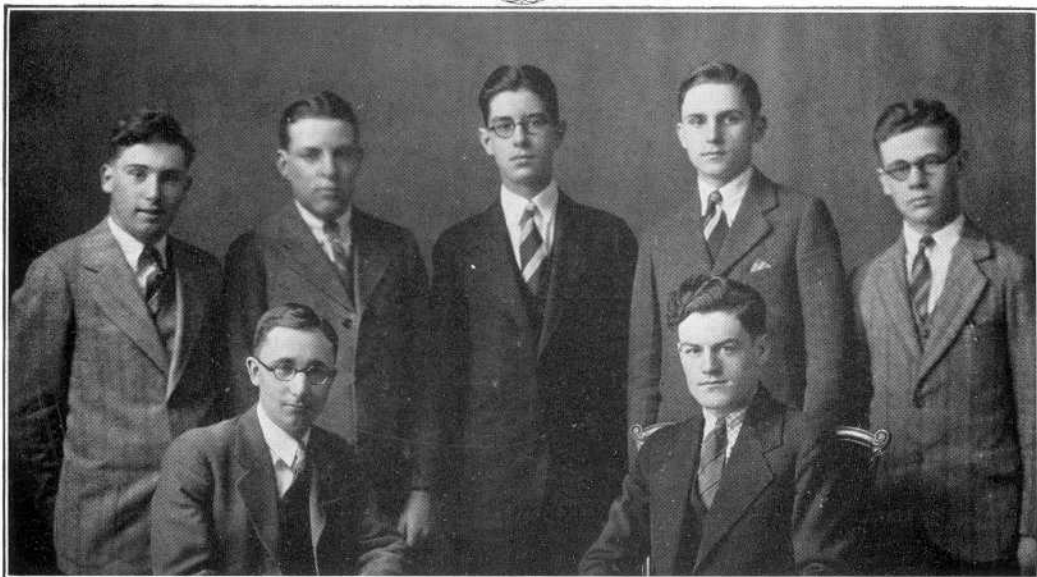
JOHN KERRIGAN, *Sergeant-at-Arms*

MISS A. McCARTY, *Faculty Treasurer*

Under the leadership of its most capable president, Edward Hanify, the Forum began one of the most successful and active years in its history. The membership, this year, was large since many freshmen and sophomores were added to the organization.

The Forum was under the supervision of Mr. Herbert A. Carroll who coached the debating team and acted as general advisor. The meetings were held bi-weekly on Wednesday evenings at 7.30. The main part of the program was either a debate or a discussion. During the course of the year, many interesting debates and open floor discussions were held. The club was also very fortunate in having the opportunity of hearing Beatrice Hancock speak.

This year, in addition to its regular interscholastic debates, the Forum sponsored the semi-finals and finals of the Senior Debate Tournament, both events being opened to the public. A banquet for the Debating Team and other members of the school proficient in public speaking and debating, was also held under the auspices of the Forum.



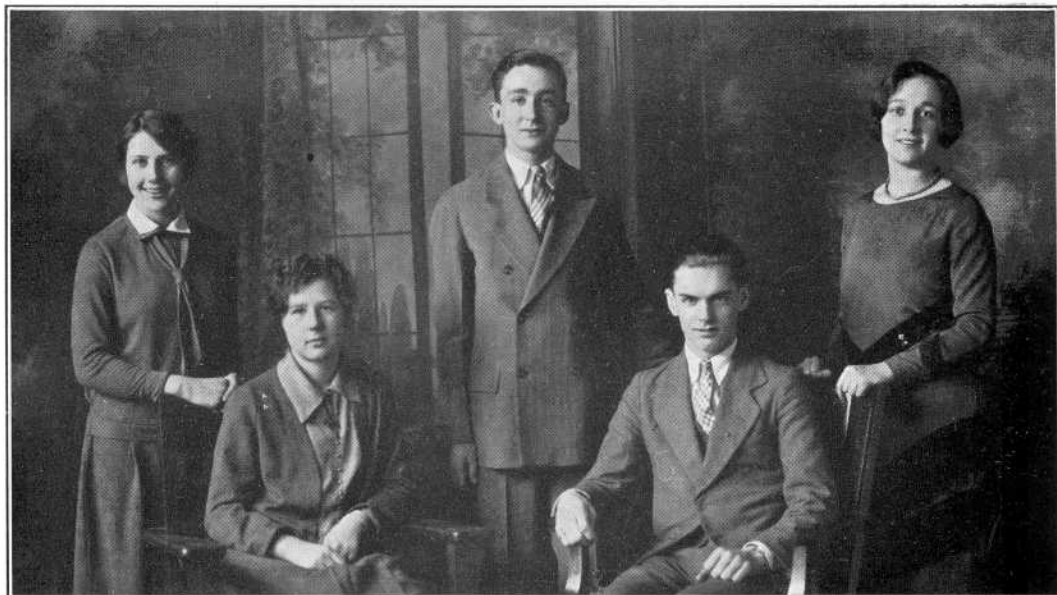
The Debating Team

Two years ago a debating team composed of comparatively inexperienced material awaited, in apprehensive anticipation, the "first performance". Though it may lack haste in approach, nevertheless an appointed time ever arrives. And, reflecting glory on its school and credit on itself, the Durfee representative unit discovered its ability and used it advantageously. An expert judge decision proved this quite conclusively. The squad had "found" itself. The rest was easy as shown by a season unmarred by defeat.

With but two members of the original six claimed by graduation, a now confident group continued its course straight into the wind leaving in its wake rough seas and vanquished opponents. "Full sail ahead" was the byword, and this top speed was not diminished till the inevitable harbor had been reached, the anticipated goal of successful debaters, the state championship.

And by no means were the high seas of argumentation placid. In January Norman McDonald entered upon his second year of leadership and captained John Kerrigan and Edward Hanify, both veterans of last year's squad, to a well deserved victory over St. John's Prep. In March, with Harry Chernock, also a veteran, taking Kerrigan's place, the Durfeeites proved the only reef in the path of Worcester Classical's string of straight victories repeating last year's episode. And finally, in May, with Charles Ryan admirably filling McDonald's position as first speaker the squad downed Providence Tech completing the journey. Duncan Kelly assisted the team by acting as alternate in one of the debates and assisting in gathering material throughout the season.

A good pilot is necessary if the ship is to enter the harbor. Coach Herbert Carroll took the helm and in this capacity pointed out the course.



The Durfee Dramatic Club

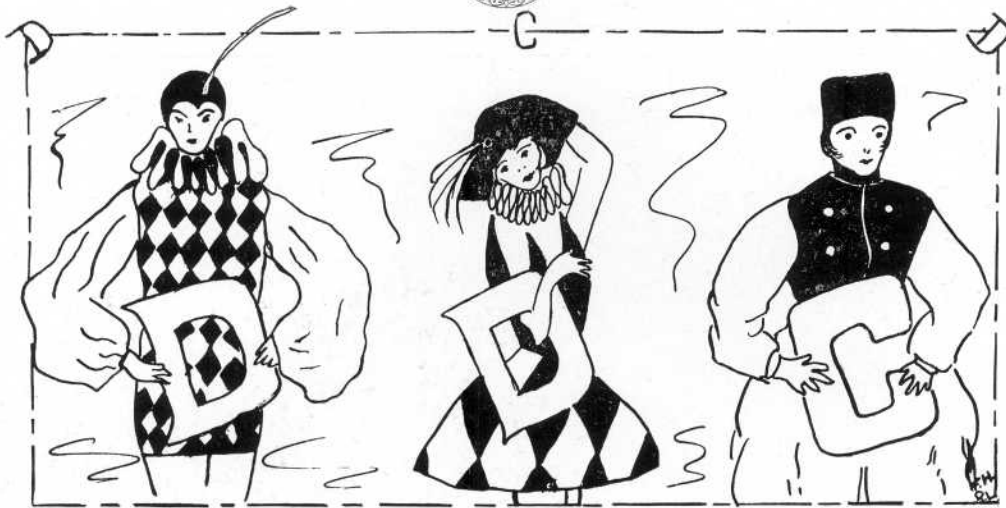
FRED HUTCHINS, *President*

SYLVIA CHACE, *Vice-President*

HELEN ROBINSON, *Secretary*

SYDNEY PETERGOVSKY, *Treasurer*

DORIS OAKLEY, *Call Boy*



SCENARIO OF DURFEE DRAMATIC CLUB

SCENE ONE: Panorama view of Dramatic Club picnic at Westport Harbor.
Close-up of thrilling murder of crippled sea gull.

SCENE TWO: Durfee Study Hall. Two health plays, "Is It the Bunk?" and
"What Price Speed?"

SCENE THREE: Same as Scene Two. "Pictures of Health in 1898 and 1928."
Elaborate old-fashioned costumes.

SCENE FOUR: Three one-act plays in Temple Hall. Quick shot of casts in
"The Bishop's Candlesticks", "Columbine" and the Irish play, "Spreading
the News". Close-up of hero with pitchfork. Quick fade out into

SCENE FIVE: Novelty Nite. Panorama view of hilarious audience in two
Junior Highs.

SCENE SIX: Same set as Scene Four. Greek ladies and soldiers in "Pygma-
lion and Galatea". Tableau of statue kneeling at feet of blind sculptor.

SCENE SEVEN: Insert of three theatre tickets. One to "Thirty-nine East"
in Providence, a long pink one for "Merchant of Venice" and one for com-
plimentary seats at "The Whole Town's Talking" in Pawtucket.

SCENE EIGHT: Copley Theatre, Boston. Stage set for "Soldiers of Peace"
in Kentucky Mountains. Insert of third prize.

SCENE NINE: Pawtucket High School. Still life of Dutch play, "Mine
Friend", entered in one-act play competition.
Large title announcing "Festival of Drama".

SCENE TEN: Mrs. Morton's lawn. "East of the Sun and West of the Moon."
Slow Fade Out and End.





The Durfee Hilltop

This year has seen a rapid ascent for the Durfee Hilltop. A general plan of renovation has been worked out to such a degree that both makeup and material have been revolutionized for the better. The several departments were advanced by added features which have proved both original and novel.

An excellent coöperation of faculty advisors, Herbert A. Carroll and Helen M. Corrigan and Editor-in-Chief Lester M. Radovsky, has established this school institution on a more solid foundation. And the exhibited abilities of Frederick Quinn, Cornelius Sullivan and Joseph Faris, Associate Editors, Lillian Mason, Circulation Manager, and James McCoy, Advertising Manager, aided in placing in the hands of the student body what has been recognized as one of the foremost secondary school weeklies, for the size of the school, in the entire country.

However, one of the most important and significant accomplishments of the staff has been the formation of principles and individuality upon which future volumes may be based.

Humorous and literary editions were read avidly by both faculty and students. The "Mangled Mirror" issue, especially, brought forth comment; more, it is safe to say, than any other since the introduction of the Durfee Hilltop some seven years ago.



The Commercial Club

DORIS M. EDWARDS, *President*
FLORENCE PRATT, *Vice-President*
HENRY MAGAN, *Secretary*
JOSEPHINE KRUPA, *Treasurer*
WILLIAM J. CHISHOLM, *Faculty Advisor*

The Commercial Club in this, its fourth year of existence, has been most successful. Under the able guidance of Mr. Chisholm, the work that was planned at the beginning of the year has been accomplished.

Prominent business men of this city and from out of town have addressed the club at the regular meetings.

This year in place of the annual bazaar, the members of the club voted to have a Frolic and Dance. The event was held on April the thirteenth and was a success financially, as well as socially.

Not only members of the club, but every student in Durfee points with pride to the Commercial Club.



The S. A. A.

VIRGINIA FRENCH, *President*

WILLIAM GALVIN, *Vice-President*

DORA FARLAND, *Secretary*

Senior Councillors

FREDERICK QUINN

PEGGY NEY

Junior Councillors

THOMAS WATERS

DORIS OAKLEY

Sophomore Councillors

DOROTHY BURKE

FRANCIS CORCORAN

A system whereby, to a great extent, the student body is self-governing, has been proven as unquestionably the most successful in every respect. The feeling of responsibility and independence which this method tends to effect is, in itself, sufficient inducement to its further development.

With this in mind, in 1922, a group composed of active student leaders and interested members of the faculty initiated such a system at Durfee. The Students' Activities Association, as it was called, met with the instant approval of the school authorities. Since it originated it has continued to grow in prestige and to assume and bear out greater responsibilities.

Under the direction of the above officers it has advanced greatly within the past year.



The Traffic Squad

WILLIAM EAVENSON, *Captain*

Lieutenants

PETER MROC

FREIDA GENAULT

MADISON MORTON

The Durfee Traffic Squad began its fifth year under the direction of William Eavenson, who was appointed to fill the vacancy left by the graduation of last year's captain. As always, the Squad has tried to relieve the congestion in the corridors during the past year. The preceding applies to the afternoon session as well as the morning session. The afternoon Squad is conducted by members of the sophomore class with Mr. Garwood at its head.

The traffic problems this year have differed from problems of previous years. Due to the double session and to the use of only one building, a condition caused by the fire which destroyed the Technical building, the Squad has been somewhat reduced.

The work accomplished has been made possible only through the able coöperation of Miss Miles, and Mr. Garwood, faculty advisors of the Squad, and with the assistance of the Lieutenants, faculty and the entire student body.

The Home Room Directors

In each home-room both in the morning and afternoon sessions, the students have elected two directors, a boy and a girl. These directors are the immediate representatives of the student body in the Students' Activities Association. With other duties within the past year there has been added the care of absence and tardiness. This plan has increased noticeably the attendance at Durfee.



The Durfee Orchestral Club

The Durfee Orchestral Club certainly has been a successful organization during the past year, its fourteenth year of prosperity. By the faithful efforts of the musicians and the priceless instructions given by the director, Mr. Titcomb, this group has kept up the pace set by the orchestras of the preceding years.

Not only has the club been of great benefit to its members, for the ensemble practice received is invaluable to them, but also has it aided many other clubs in the school by supplying the music for various occasions. In March the club sponsored a fine concert which was enjoyed by a large audience. It also furnished excellent music for the Class Day and Graduation exercises.

Thus the orchestral club is of major importance to other clubs, to its own members, and to the entire school. The class of '28 appreciates its fine work and sincerely hopes that the untiring effort put forth by the players shall continue to make it and the name of Durfee famous.



The Durfee Glee Club

VIRGINIA FRENCH, *President*

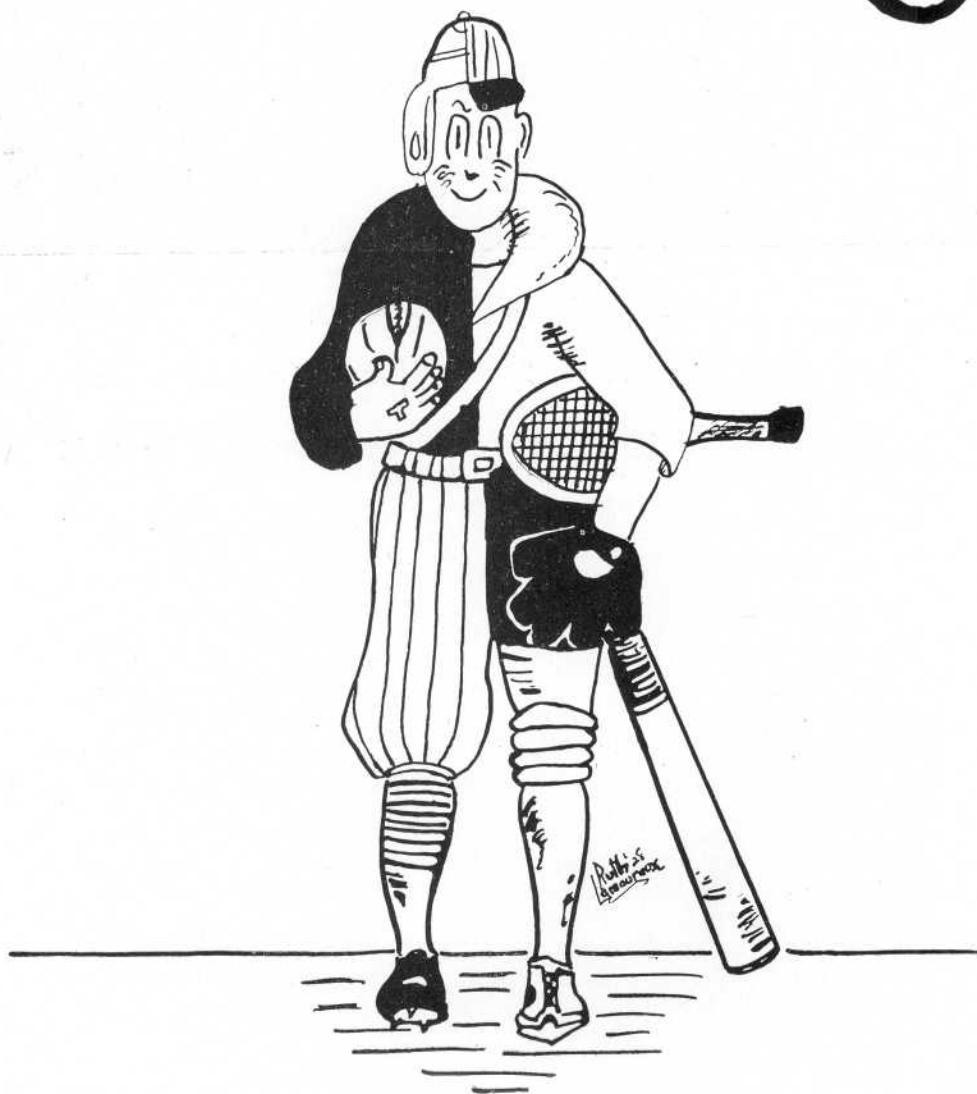
HELEN ROBINSON, *Treasurer*

This year the Durfee Glee Club has progressed by rapid strides and is becoming one of the most active clubs in the school. The pupils of Durfee are appreciating more and more the intrinsic value of music. By the efforts of this club they are, themselves, pursuing a course whereby this appreciation can be trained. Under the excellent leadership of Miss Ladd, the Glee Club has extended itself and the original limitations allowing only female voices have been obliterated. During the present school year boys have been urged to enroll as members. Because this idea is a new one in Durfee, at first it was met with very little response. However, this did not hinder the earnest efforts of those concerned and finally a mixed chorus was attained.

Before Christmas vacation the Glee Club sang carols in the school corridors and also at a meeting of college graduates. The club held its second annual concert in Music Hall, March 8, 1928, and the offerings were received very warmly by the audience. This concert was presented in conjunction with the Orchestral Club.

In May the club was entered in the Glee Club Conclave in Boston. Here it made an excellent showing, exhibiting the musical talent which comprised the unit.

ATHLETICS





The Baseball Season

The first call for all baseball candidates for the 1928 team was issued March 19 by Coach Leslie Orcutt. A large number of candidates reported, among whom were many seniors whose number included four veterans from the county championship '27 team. The quartet were Captain-elect Walter Moson, Bill Lomax, Frank Demoe, and Lawrence Terry.

With these four Seniors as a nucleus, indications were that Durfee again would be represented by a first-class baseball team.

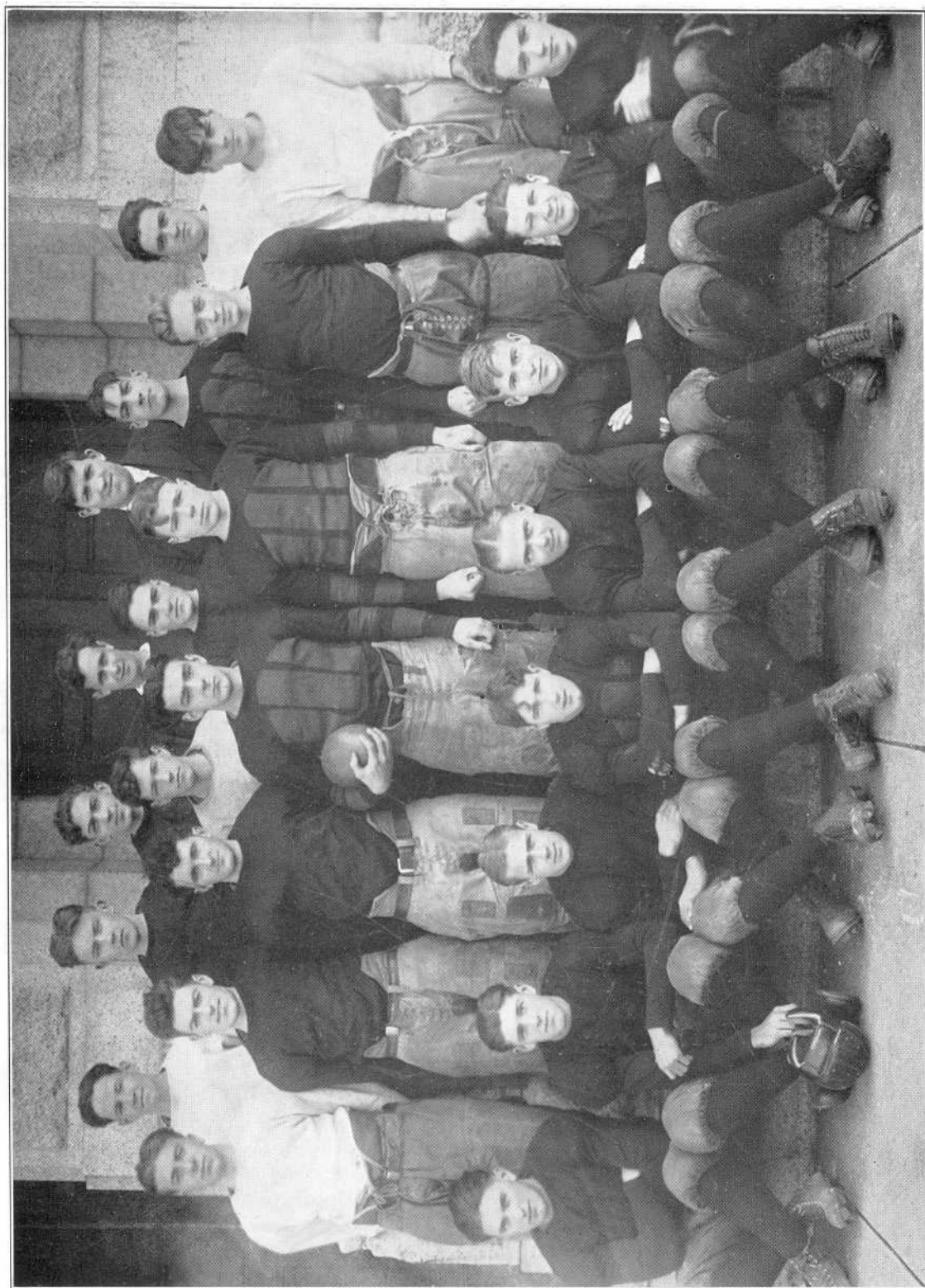
Especial interest is centered in this year's team which will be the defending champion of the Bristol County Interscholastic League.

The squad this year will be made up of Seniors and Juniors, and most of the burden of defending the title will be borne by members of the Class of '28. Coach, captain, players, and students anticipate a successful season.

The schedule, which is one of the longest and most arduous of recent years, follows:

April 28	Fairhaven	May 26	Brockton [†]
May 3	New Bedford	May 29	Dartmouth
May 4	Dartmouth*	May 30	Malden*
May 8	Brockton	June 1	Rogers*
May 14	Vocational*	June 5	Vocational
May 15	Attleboro*	June 7	Taunton*
May 19	New Bedford*	June 9	Attleboro
May 22	Taunton	June 12	Rogers
May 25	Fairhaven*		

* Home games





The Football Season

At the beginning of the football season Coach Shurtleff and Captain Hugo ("Frenchy") Denault were faced with the problem of starting the year by forming an eleven from inexperienced material. Only three men, all Seniors, had had any previous experience in active interscholastic football. The three lettermen were Captain Denault, Ed Williamson, and Leo Belford. But under the expert guidance of the coach and captain the team became one that was much feared and respected for its ability by all opposition; and although the Red and Black warriors failed to win one Bristol County Interscholastic League encounter, they won every game played with "outside" teams.

In the first game, played at Alumni field, September 24, West Warwick High's eleven was trounced 19-0. Although the team played raggedly, it showed signs of future power. On October 1 at Hendricken Field, Providence, the Hilltoppers were superior to the La Salle Academy gridmen and defeated them, 6-0, by virtue of a touchdown scored in the closing minutes. In this battle the team played its best game of the season.

The next game, played at Alumni Field, October 8, resulted in a 6-6 tie, Attleboro, the first county league opponent of the season, being the visiting team. At this time the lack of a good drop-kicker or kicker from placement was felt. Then, on Columbus Day, the "Big Blue" team of Fairhaven High came, saw, and conquered; but only by the narrow margin of 2-0.

Durfee returned to her winning ways, October 22, tripping up Boston Latin's eleven, 14-6. Then followed the Middleboro and North Attleboro games, both exhibition contests, played at home and away respectively. Both games were won handily, the former by a 25-0 score, and the latter 38-13. Then, on a visit to Taunton, the team suffered its worst defeat of the season, losing to the Orange and Black by a 19-6 score. The Taunton victory was the first ever scored by an up-river school team over the Red and Black.



The Football Season---Continued

Vocational was the next opponent of the Hilltoppers, visiting Alumni Field November 19, and, in return for the hospitality, the Trade School boys defeated Durfee for the first time on a football field. The score was 7-6. Then came the annual Thanksgiving day game, played at New Bedford. The contest was typically a Durfee-New Bedford affair, and, as usually happens in these games, the home team won. The game was close and hard-fought as the score, 7-6, indicates. This reverse ended the season.

In all, Durfee won five games, lost four, and tied one, making up a mediocre season. First team "F. R.'s" were awarded to Captain Denault, Ed Williamson, Tom Cullen, Bill Lomax, Frank Helliwell, Frank Desmond, John Sullivan, Norm McDonald, Alex Cote, James Higginbottom, Leo Belford, Tom Keefe, Eddie Bodeau, all Seniors; Captain-elect Frank Chippendale, Charlie O'Keefe, Frank Zajac, Jack Rigby, Ed Healy, and Len Durfee. Second team insignia were given to Art Foley, Paul Amiot, Oliver Hazzard, Ed Howard, and Bill Morrissey.

The advisory athletic council of the faculty met March 14 and voted to award "D's" to all recipients of "F. R.'s" for football. The schedule:

September 24	West Warwick*	October 29	Middleboro*
October 1	La Salle	November 5	North Attleboro
October 8	Attleboro*	November 12	Taunton
October 12	Fairhaven*	November 19	N. B. Vocational*
October 22	Boston Latin*	November 24	New Bedford

* Home games



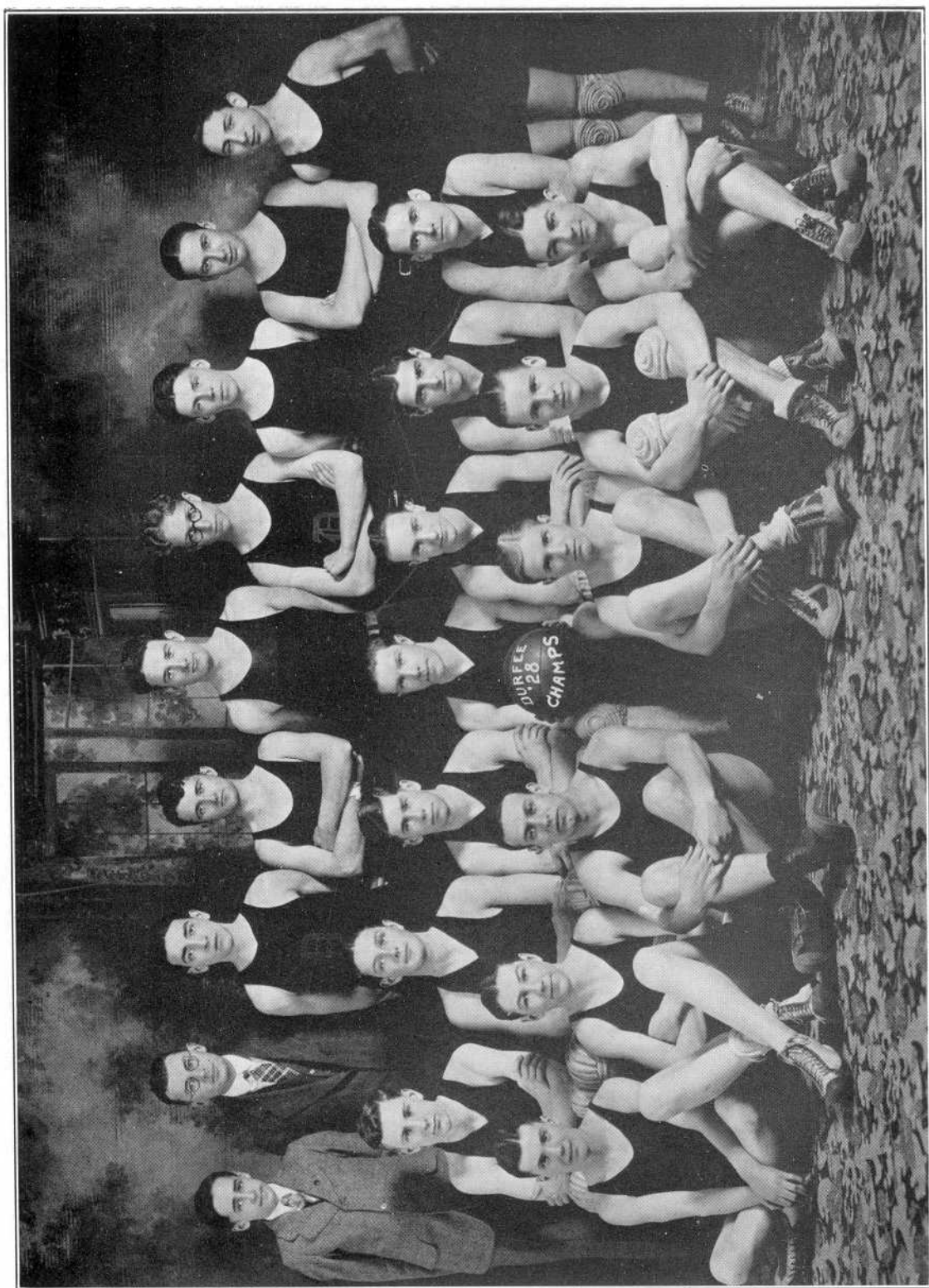
The Tennis Team

The 1928 tennis team was entering at the time of going to press on what gives evidence of being one of the most successful seasons a Durfee team has had.

The first match was against Rogers where the experienced Rogers team was forced all the way to take the match 4-3. Durfee men who participated were Captain Clem, the only veteran on the team; White, Wyatt, Monaghan, Ryan, Gollis and Milne.

With this experience behind them the team started to hit its stride and defeated the representatives of Providence Classical High School, 6-0. This was the first defeat for Classical in a number of years and gave the Durfee men confidence in their ability. Beattie playing his first match showed much promise.

The team this year faces a hard schedule, but although inexperienced it contains some fine players and should have a most successful season.





The Basketball Team

The school's basketball team, whose five varsity regulars were members of the Class of 1928, gave Durfee its second Bristol County Interscholastic league title, defeating every team in the league twice with the exception of the fast Attleboro five, which won out from the Hilltoppers in both games played.

To win the championship Durfee won eight games and lost two. In the three non-league exhibition games played Durfee defeated and lost to Arlington, state schoolboy champions, and won from North Attleboro.

Captain "Bill Lomax led the league in individual scoring for the third successive year. The brilliant leader proved also a capable and efficient captain, as well as star player.

Other members of the '28 class who played regularly and received letters were "Ed" Payton, forward; Louis Freedman, center; "Bill" Sullivan and Louis Lipschitz, guards. Israel Golden and "Jimmy" Brady of the Senior class also were awarded "D's".

The Durfee Seconds played thirteen games, winning seven and losing six.

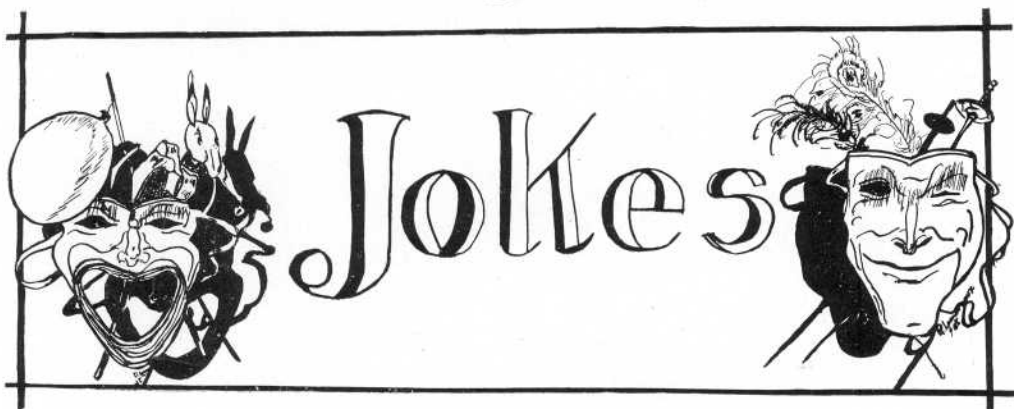
First team letters were awarded to 11 men, and nine second team insignia were voted by the Athletic Council of the faculty.

Harold Shusteroff of the Class of 1929 was elected to captain the squad for the 1928-29 season.

The '28 team's record follows:

Date	Opponent	Score	Date	Opponent	Score
Jan. 4	Aggies	50-15*	Jan. 29	Attleboro	21-25*
Jan. 7	Vocational	24-15	Feb. 3	New Bedford	37-18
Jan. 11	Aggies	44-18	Feb. 10	No. Attleboro	38-13*
Jan. 14	Arlington	29-22*	Feb. 14	Vocational	38-19*
Jan. 18	Fairhaven	43-24*	Feb. 17	Fairhaven	47-30
Jan. 21	Attleboro	20-23	Feb. 24	Arlington	15-45
Jan. 25	New Bedford	47-11*			

* Home games



"There are two sides to every question," proclaimed the wise man.

"Yes," said the fool, "and there are two sides to a sheet of flypaper, but it makes a difference to the fly which side he chooses."

* * *

A young country swain went to a jeweler to have a ring engraved for his sweetheart.

"I want you to engrave these words sir," he said. "Gaston to his dearest Adeline."

"If I may be so bold," said the jeweler, "I would suggest something else."

"What?"

"I think it would be much more practical to engrave 'Gaston to his first and only love.'"

* * *

There are lawyers who never ask a fee for defending a bootlegger. They are satisfied with just getting a case.

* * *

Low: "What is it a sign of when your nose itches?"

Brow: "Going to have company."

Low: "And what if your head itches?"

Brow: "They have arrived."

* * *

"Girl Pupils Sleep Ten Hours Daily."—Headline. Yep, they seldom sleep nights any more.

* * *

"The law library must be a very noisy place."

"How come?"

"It's so full of reports."



“By the way, Bill, are you a married man?”

“No sir. Those scratches you see on my face were caused by a railroad accident.”

* * *

It always makes me laugh,
So wonderful a treat,
To see an athlete run a mile
And only move two feet.

* * *

Ned: “He plays a fair golf game, doesn’t he?”

Ted: “Yes, if you watch him.”

* * *

“I just cleaned up thirty thousand bones on my land.”

“Oil?”

“No, graveyard.”

* * *

Charlie: “Why do you only have papers here with reports of crimes and murders?”

Barber: “Well, it makes the customer’s hair stand on end and then it is much easier cut.”

* * *

Ida: “Is it true that statistics prove women live longer than men?”

Ada: “Well, you know paint is a great preservative.”

* * *

Fussy Customer: “Now I don’t want my hair lopped off just the merest trifle.”

Barber: “I understand, sir — just a noise with the scissors.”

* * *

I took my girl to the senior prom
’Cause she couldn’t go alone.
And it’s darn lucky that I did,
For ’twas her who brought me home.

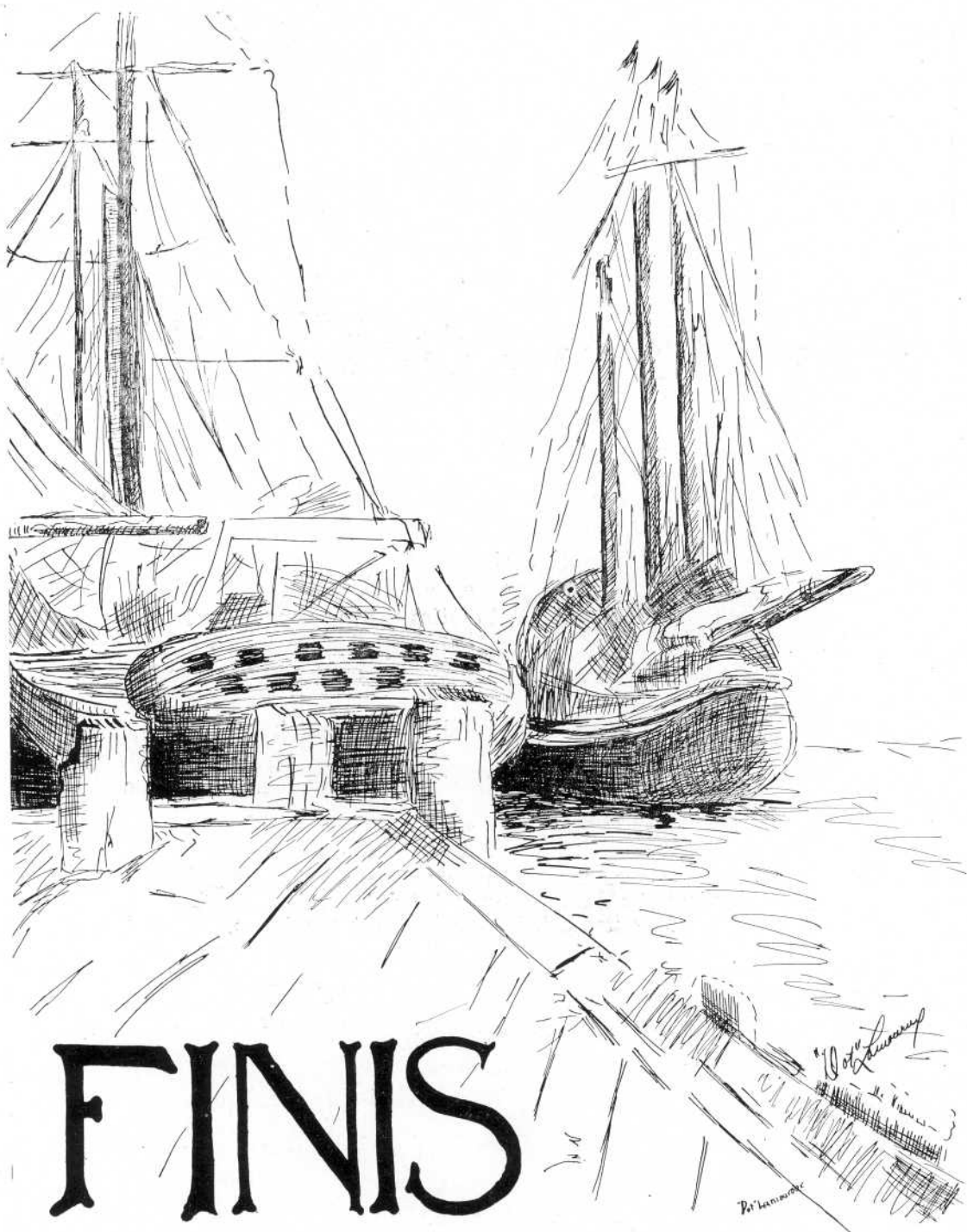
* * *

He kissed Helen
Hell ensued.
He left Helen,
Helen sued.

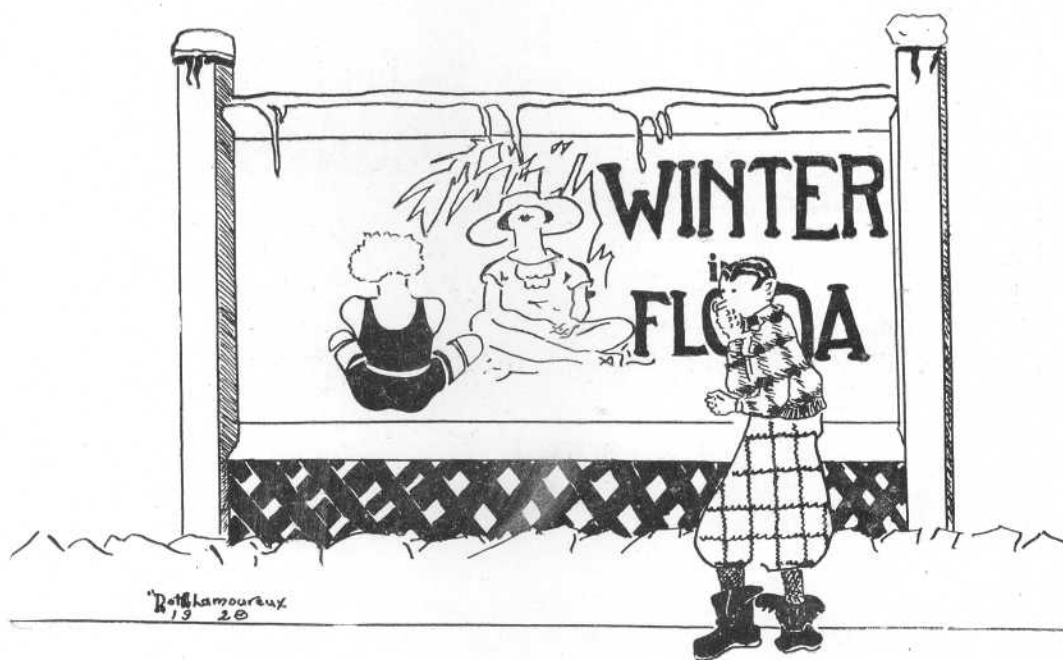
* * *

Marshal (on ’phone): “Yes, this is the fire department. Do you want to report a fire?”

New Bride: “Oh, no. I just want to order coal and wood for the winter.”



ADVERTISEMENTS





Compliments of

HON. W. HARRY MONKS

MAYOR





COMPLIMENTS o f FIDAMIES

One Hundred Fifteen

High School Students—Take Notice!

Owing to the large number of requests received from

- (1) Those planning to enter college or normal school and desire a knowledge of shorthand and typewriting
- (2) Those wishing to secure a two-months' start in their training for a business career

we shall conduct summer classes **during the forenoons** beginning **July 2** in all departments of the school—Secretarial, Accounting, Bookkeeping, Shorthand, Typewriting, Civil Service. Why not capitalize the summer's months in cool, pleasant rooms? Call, phone or write for information.

Thibodeau Business College, Inc.

REFINED

PROGRESSIVE

SUCCESSFUL

130 SOUTH MAIN STREET

TEL. 848

FALL RIVER

Smith's

Drug

Store

OPPOSITE

PUBLIC LIBRARY

Compliments of

H. C. Talbot Co.

Clothiers

*Clothing and Furnishings
Hats and Shoes for
Young Men*

"SOCIETY BRAND" CLOTHES

"STEIN BLOCH" SMART
CLOTHES

"CLOTHCRAFT" CLEVELAND

"TALBOT BOSTON-MADE"

Local Agents for

A. G. SPAULDING & BROS.
ATHLETIC GOODS

H. C. Talbot Co.

POCASSET BLOCK

WE ARE SHOWING HOSIERY WITH THE
LATEST STYLE HEELS

"That Glorifies and Beautifies the Ankle of the American Girl"
Paris Inspired

With all its traditions for beauty comes

Diamond Selvage Fleur De-Lys Stept Heel Lance Heel
Twin Heel Slipper Heel Steeple Heel

Prices \$1.49 \$1.95 \$2.50 \$2.95

Blue-Bird Hosiery Shop

236 SOUTH MAIN STREET

Robert W. Powers

HUDSON and ESSEX
AUTOMOBILES

Do you know what will give
you the best time through
life? I'll tell you—

WORK

and with that

SAVE

Spend a little less than you
earn. It costs me eight dol-
lars to tell you this, but it will
be worth thousands if you
observe it.

This didn't get me anything last
year. See what happens this!

Frank L. Andrews

Investment Service

43 FRANKLIN STREET

TEL. 1350 and 1930

Frank M. Silvia

Compliments of

William J. Dunn



School Portraits

Special Rates to Students in
B. M. C. Durfee High School

Bachrach

Photographs of Distinction

56 NORTH MAIN STREET

ROBERT A. WILCOX, Inc.

*Stationery, Office Supplies
and Paper*

116 BEDFORD STREET

TEL. 385 and 386

JOHN WILLIAMS

Dealer in

*Diamonds, Watches, Clocks
and Jewelry*

96 PLEASANT STREET

A willing servant in
every home for

Cooking

Water Heating

Room Heating

Lighting

House Heating

Clothes Drying

Incineration

Refrigeration

Gas Service

FALL RIVER GAS WORKS COMPANY

GENERAL OFFICE

155 NORTH MAIN STREET

Clothiers

Haberdashers

J. E. NADEAU

Men's Specialty Shop

"The Store of a Good Fit"

1356 PLEASANT STREET

Compliments of

WOODWARD STUDIOS

Compliments of

HICKEY'S PHARMACY

314 SO. MAIN STREET

FRANCIS J. CARREIRO, Esq.

CLASS '22

Compliments of

JOHN FRIAR

Compliments of

ARTHUR O. ANCTIL

Jeweler and Watchmaker

1503 PLEASANT STREET

One Hundred Nineteen

Compliments of the

Fyans, Fraser & Blackway Co.

TEXTILE MACHINERY

D. JETTE

Photographer

303 SO. MAIN STREET
FALL RIVER, MASSACHUSETTS.

KAPLAN BROS.

300 SO. MAIN STREET

Agents for

Chickering & Ampico Pianos
also the
Gulbrancen & Hallet & Davis

O. DUMONT

Jeweler and Engraver

1456 PLEASANT STREET
FALL RIVER, MASSACHUSETTS.

Books—Stationery

Gift Novelties

Greeting Cards for All
Occasions

Complete Office Outfitting

SAM HALL'S MUSIC STORE

54 NO. MAIN STREET

Music and
Musical Instruments

ADAMS' BOOKSTORE

Established 1842

165-169 NO. MAIN STREET

JOHN P. NOWELL, JR.

*Mill Stocks
Investment Securities*

ARCHER BLDG., 38 ROCK ST.

Compliments of

**MR. AND MRS.
HYMAN POSNIACK**

Eyes Examined Glasses Fitted

PAUL O. BARRE

Optometrist

CLASS 1919

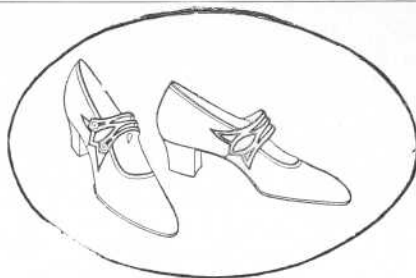
1503 PLEASANT ST.
FALL RIVER, MASS.

Compliments of

NATHAN STERNISHER, Esq.

"The Store Where Quality Counts"

PIERRE PICARD
1333-35 PLEASANT ST.



**SHOES
AND
HOSIERY**

FOR GRADUATION

For Young Men For Young Ladies

STYLE, QUALITY, SERVICE

*Shoes for Vacation Time in
Great Variety*

D. F. Sullivan



**BULOVA
WATCHES**

*"As Serviceable As They Are
Beautiful"*

WONSON, INC.
JEWELERS
FALL RIVER, MASS.



HOWARD-WESSON CO.

ENGRAVERS

WORCESTER, MASS.



Compliments of

BENJ. HORVITZ, Esq.

Compliments of

NOBBY MEN'S SHOP

Gay's

Art Galleries

— In Fall River —

Where You Buy Your
GRUEN Watch

GRUENS
for the up-to-date youth!

Square Deal Jewelers

Mullen Bros.

254 SOUTH MAIN ST.
Opposite Steiger's

Compliments of

**BRIGGS' DANCING
ACADEMY**

J. H. O'DRISCOLL

*Stationery and Greeting
Cards*

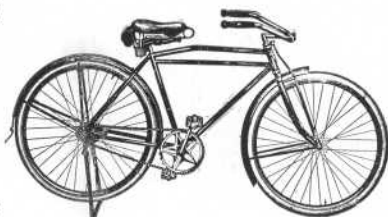
1293 PLEASANT STREET
TEL. 7708 OPEN EVENINGS

**FRANK C. NICHOLS
COMPANY**

251 Bedford St.

Iver Johnson

Velocipedes



**FRANK C. NICHOLS
COMPANY**

251 Bedford St.

Iver Johnson

Bicycles

“Printed by Leary”

The 1928 Record Book of the B. M. C. Durfee High School---a 148 page Souvenir Program for Temple Beth-El---10,000 copies of 51st Birthday Anniversary Booklet for the R. A. McWhirr Co., and Souvenir Programs for Fall River Chapter, Order of Ahepa, Lovenbury Fund, St. Joseph's Church, Fall River Lodge No. 118, B. P. O. Elks, Young Men's Hebrew Association ---these represent some of the book work produced by the Press of C. J. Leary & Sons, Inc., Fall River, Massachusetts, since the first of the year.

Edward B. Varney

COTTON

Index

Acknowledgment	12
Advertisements	113
Athletics	102-109
Autographs	88
Class Officers	13
Class Pictures	15-87
Commercial Club	97
Debating Team	92
Dedication	5
Dramatic Club	93-95
Durfee Forum	91
Durfee Hilltop	96
Faculty	6
Glee Club	101
Hall of Fame	14
Home Room Directors	99
In Memoriam	89
Jokes	110-111
Orchestral Club	100
Record Book Staff	8-11
S. A. A.	98
Traffic Squad	99
Who's Who	90

