



Charles F. Hays


DURFEE ALMA MATER

Raise our praises high to Durfee
Alma Mater dear,
Tow'ring high beside the river,
Radiant beacon clear.

Love and praise we render ever
Voices raise on high,
Loud we sing of Durfee's glory
To the earth and sky.

God preserve for Alma Mater
Standards staunch and true,
High aloft we'll lift her banner
Bright with Durfee's hue.

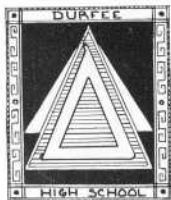
—John Watkinson, '33.



C. J. LEARY & SONS, INC.
FALL RIVER, MASS.

THE

Durfee Record



PUBLISHED BY THE CLASS OF

1933

B. M. C. DURFEE HIGH SCHOOL

FALL RIVER, MASSACHUSETTS

To
Joseph Oliver Carroll

In appreciation of four years' generous service,
unfailing support, and friendship,
The Class of Nineteen Hundred and Thirty-three
dedicates this book.



Harroll



THE FACULTY

Principal

CHARLES V. CARROLL

Vice Principals

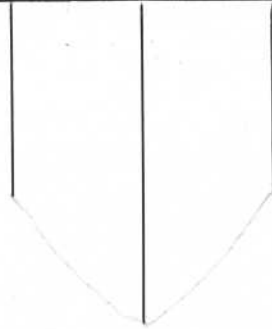
RALPH M. SMALL

JOSEPH O. CARROLL

Allard, Louis A.	Earle, Charles C.	Nawrocki, Stephen
Allen, Ralph C.	Fletcher, Ralph	Newkirk, Ruth W.
Andrus, Don F.	Forster, Gladys G.	O'Neil, Annie L.
Ashley, Myron T.	Foulkes, Carrie T.	O'Neil, Isabelle
Bent, Eugenie W.	Gottwald, Frederic J.	Orcutt, Leslie W.
Brightman, Ernest L.	Harlow, Mabel	Pickup, Herbert W.
Campbell, Emily	Harrington, Frederick	Pratt, F. Antoinette
Caron, Marie E. A.	Harrington, John J.	Pritchard, Florence G.
Carpenter, Mary L.	Jouett, Blanche I.	Ramsay, Mabelle E.
Carroll, Mildred V.	Judge, Mary E.	Robbins, Mabel S.
Carvalho, John	Keefe, Margaret	Ryan, Mary E.
Chase, Winifred F.	Keeley, Ambrose F.	Seagrave, Sylvia W.
Chisholm, William J.	Kernan, Marion E.	Shea, Henry J.
Cleare, William M.	Lane, Frank D.	Smith, Charles
Coggeshall, Dexter E.	Langford, Alice G.	Smolensky, Hilda I.
Cole, Lillian F.	Laporte, Louise C.	Spring, Mabel
Conlin, James	Lautal, Olga A.	Sullivan, Catherine L.
Connors, George	Lawlor, Joseph J.	Sullivan, Daniel J.
Connors, Mary B.	Lomax, Katherine	Sullivan, Mary H.
Cook, Berton E.	Lord, John G. E.	Thompson, Marion R.
Coyle, George F.	Lynch, Harry P.	Torphy, Marion L.
Crowley, John T.	Macdonald, Margaret E.	Townsend, Ella L.
Dailey, Margaret G.	Maronpot, Raymond P.	Townsend, John M.
Davis, E. Christine	McCarthy, Anna G.	Vosburgh, Ruby
Delahanty, Edna U.	McHale, Rose E.	Walsh, Anna F.
Delahanty, John	McQuillan, Mary A.	Wellington, Barbara
Dolan, Mary A.	Mello, Victor	Williston, Amasa F.
Dow, Ruth N.	Miles, E. Estelle	Withrow, Helena H.
Duffy, Andrew L.	Mitchie, George A.	



The Senior Class





Acknowledgment

WE wish to extend our thanks to Mr. Harry P. Lynch for his unselfish labor in helping to produce this annual, to the Fall River Herald News for its kind permission to use some of its photographs, and to the members of the Staff, whose service has, in a large part, helped to make this publication a success.

—The Editor.



RECORD BOOK OFFICERS



MILDRED PANSY
Associate Editor



GERALD H. WARING
Editor-in-Chief



LENORA GROZEN
Associate Editor



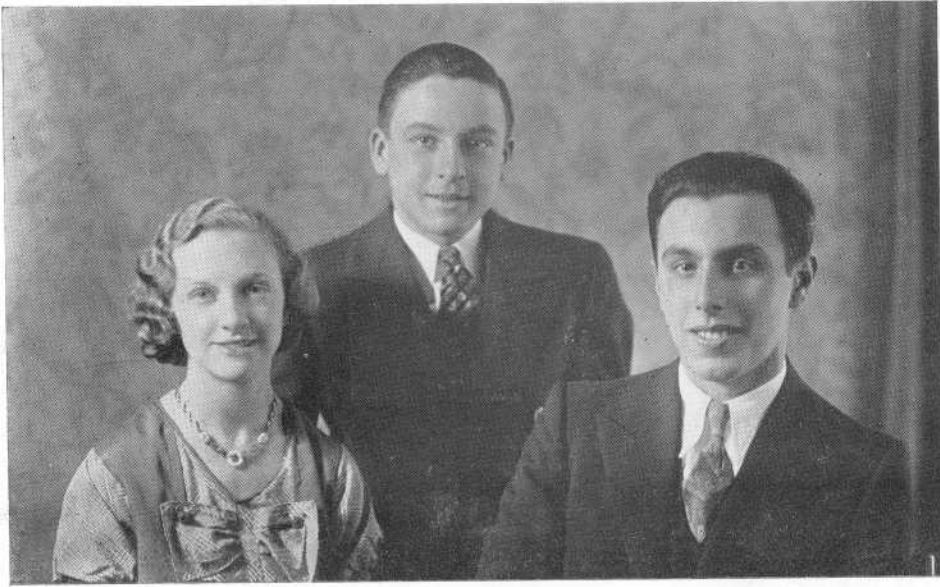
FRANCES BROUGH
Business Manager



IRENE KERNESS
Asst. Business Manager



MAX PACKER
Asst. Business Manager



CLASS OFFICERS

FREDERICK C. LOUGH - - - - - *President*

ALDO DEBENEDICTIS - - - - - *Vice President*

RUTH HEYWOOD - - - - - *Secretary*



HALL OF FAME



FREDERICK C. LOUGH
FREDERICK C. QUINN, JR.
BERNARD H. ZASS
IRENE KERNESS
GERALD H. WARING
THOMAS F. MONAGHAN, JR.
DORIS H. BOWDEN
WILLIAM F. GOYETTE
LOUIS DeBONIS
THOMAS W. HAMMOND
PHILIAS DUMAS



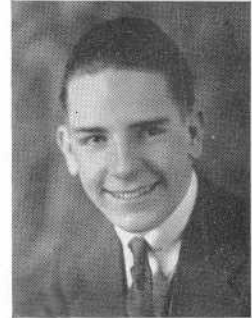
CAROLYN J. BAXTER



NORMAN H. ABRASH

"Norm"

Orchestral Club (2).



CHARLES FREDERICK ADAMS

"Captain"

Home Room Director (2); Traffic Squad (2, 3, 4—Captain 3—Student Advisor 4); Dramatic Club (4); Electrical Club (4).



HENRY ANDERSON ADAMS

"Hen"

married

ROBERT CUMBLEDDGE ADAMS

"Bob"



CARMELA IRENE ALBANESE

"Chic"

Commercial Club (2, 3).



RUTH DAVOL ALBRO

"Ruthie"

Home Room Director (3); Pin and Ring Committee (3); Record Book Staff (4); Gift Committee (4).



BERTRAND ROLLAND ALLAIRE
"Sonny"

Dramatic Club (3, 4—Call Boy 4);
Forum (4); Traffic Squad (4); Base-
ball Committee (4); Basketball Mana-
ger (4); Varsity Club (4).

married



EDITH ROBERTA ALMY
"Edie"

Commercial Club (2, 3, 4).



ROLAND EDWARD AMIOT
"Roll"



ETHEL JOSEPHINE ANDERSON



RUTH NAOMI ASTLE
Commercial Club (2, 3, 4).

Ruth Astle



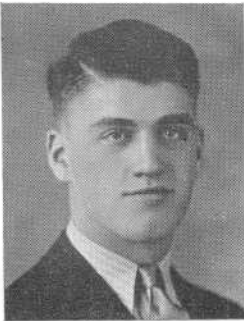
CLAIRE LORRAINE AUDET



ELIZABETH AZEVEDO

CASIMIR STANLEY BABIARZ
"Kazy"

Orchestral Club (2, 3); Band
(2, 3, 4).



EDWARD ANDREW BABKA
"Eddie"

Football (2, 3, 4); Varsity Club
(3, 4).

*metowallis married
1947*

LILLIAN BAILEY
"Lil"

Health Club (2); Home Room
Director (2, 4); Dance Commit-
tee (3); Hilltop Staff (3); Record
Book Staff (4).

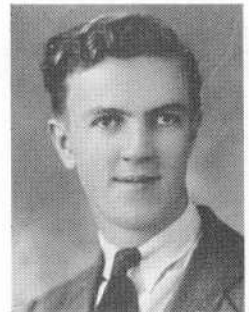


LESTER FRANCIS BALL
"Les"

Forum (4); Hilltop Staff (4).

JOSEPH F. BARBAROW
"Joe"

Commercial Club (2).





PATIENCE COOK BARKER
"Pat"—"Patty"



JAMES PATRICK BARNES
"Red"



HAROLD LEONARD BATES
Commercial Club (3).

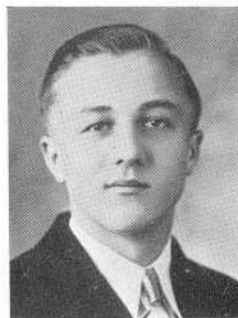
CAROLYN VIRGINIA BAXTER

Home Room Director (2); Health Club (2); Dance Committee (2); Dramatic Club (3, 4); Record Book Staff (4).



LENA BEAN
"Gus"

Commercial Club (3, 4).



WALTER JOSEPH BEDNARZ
"Walt"



H. CHARLES BENOIT
"Charlie"

married



JOHN LAWRENCE BERG
"Swede"
Electrical Club (3).



LOTTIE BARBARA BERNAT
Commercial Club (2, 3, 4).

married



CHARLES EMILE BERNIER
"Charlie"
Commercial Club (2, 3, 4).

Charlie



JOHN BERRY, JR.
"Jack"

Health Club (2); Electrical
Club (4); Traffic Squad (4).

*John Goyne
1/3*

EDWARD CHARLES BERUBE
"Eddie"



*Postmaster
F.R.*



RITA ROSE BERUBE
Hilltop Staff (4).



RUTH ALICE BIRKETT
"Bucky"
Commercial Club (2, 3, 4);
Chorus (4).



EDWARD LEE BISHOP
"Bish"—"Eddie"



GILBERT BLACK
"Gibby"



HAROLD BLACK
"Pinky"



ALICE ANNA BLACKER
"Al"
Dramatic Club (3, 4); Forum (4).



GERALD FRANCIS BLAKE
"Gerry"

married



PHOEBE BOARDMAN
"Bee"

hooked

Home Room Director (3);
Dramatic Club (3, 4); Com-
mercial Club (3, 4—Vice Pres-
ident 4); Basketball (4).



ISIDORE BOGUSLAVSKY
"Izzy"—"Red"

Home Room Director (1); Forum
(1, 2); Health Club (2); Dramatic
Club (3).



WALTER ALFRED BOLDUC
"Walt"

Walter Bolduc



EDITH GERALDINE BOLUSKY
Health Club (2); Commercial
Club (2, 3, 4).



ARNOLD THOMAS BOOTH
"Arnie"—"Bootie"



MARY BORGES
Commercial Club (4).

married



RUTH PATRICIA BOULDS
Home Room Director (1);
Commercial Club (1, 2, 3, 4).



DORIS HELEN BOWDEN
"Dot"
Commercial Club (2, 3, 4—Pres. 4).



HENRY SYKES BRADBURY
Electrical Club (3, 4—Vice
President 3—President 4);
Home Room Director (4).



JAMES EDWARD BRADBURY
"Jim"



GLADYS SHIRLEY BRADLEY
Commercial Club (2, 3, 4).



RUTH IONE BRENT



JOHN ANTHONY BRITTO

"Johnny"

Baseball (1); Track (1, 2, 3, 4);
Basketball (2, 3); Commercial
Club (2, 3); Football (2, 3, 4);
Varsity Club (3, 4—Vice Pres. 4).

Johnny

married



LAURA MILDRED BRITTO

Commercial Club (2).

Laura Britto

MANUEL FREDERICK BRITTO

"Manny"

Baseball (1); Track (1, 2, 3, 4);
Basketball (2, 3); Commercial
Club (2, 3); Football (2, 3, 4);
Varsity Club (3, 4—Secretary-
Treasurer 4).

Manny



FRANK RICHARD BROOKS

Football (4).

RAYMOND BROOKS

"Ray"

Home Room Director (2, 3);
Library Aids (4); Forum (4).





FRANCES ISABEL BROUGH

"Fran"—"Frannie"

Dramatic Club (3, 4); Business
Manager Record Book (4).

CARRIE MAE BROWN

Design Guild (4).



KENNETH EDWARD BROWN

"Ken"

Electrical Club (4).

*married
2/23/34*

married
Joe Buffington

JOSEPH LEARNED BUFFINGTON

"Joe"



MARY RUTH BURDETT

"Ruthie"



DOROTHY LEE BURGO

"Dot"

Commercial Club (3, 4).



ADA PATRICIA BURNS

"Burnsey"

Commercial Club (2, 3, 4).



ANNA BURSTEIN

"Nessle"

Commercial Club (2, 3, 4).

married



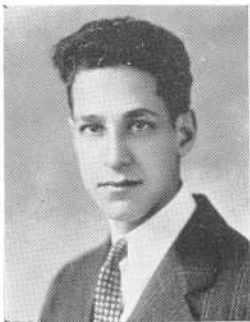
HELEN LOUISE CAHILL

Cal 7/10/19
married

RITA MARIE CALLAHAN

"Cal"

Health Club (2); Basketball
(2, 3, 4—Captain 2, 3); Sports
Committee (4); Hilltop Staff
(4); Record Book Staff (4).



PHILIP CAMARA

"Phil"



EDITH MAE CANNING

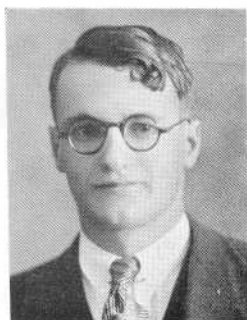
Commercial Club (2, 3).



PETER WILLIAM CANTELMO

"Pete"

"Pete" W. Cantelmo.
Wm Carey

WILLIAM EDWARD CAREY
"Bill"

HANFORD WINTON CARR

Hilltop Staff (1); Traffic Squad (2).

ERVIN JOSEPH CARROLL

Home Room Director (2);
Dramatic Club (3, 4); Traf-
fic Squad (4).

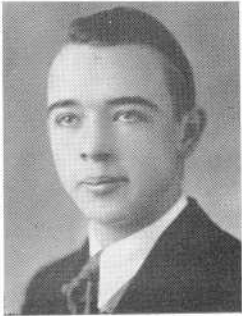
Ervin J. Carroll



ARTHUR JOSEPH CARTIER

"Art"—"Peewee"

GRACE KATHERINE CASEY
"Gay"



MARCEL CASTONGUAY



CLARA MADELINE CETOLA

married



ANITA RECELL CHAVENSON

"Neats"—"Nita"

Dramatic Club (3, 4); Forum (4); Hilltop Staff (4); Record Book Staff (4).

married 19

"Nita"



HELEN ANTOINETTE CHENARD

President Design Guild (3).



WINTHROP IRVING CLARKE

"Win"—"Winnie"

Football (2); Home Room Director (3).



EVERETT AINSWORTH CLARKSON

"Ev"

Orchestral Club (2, 4).



RUTH ANN CLEMMY
"Ruthie"

*married
for 10 years
1/10*

EMMA CLEVERLEY
"Lee"

Home Room Director (3).



ALBERT FRANCIS CLOUTIER
"Al"

married

ELLEN JOAN COBERY
"Coby"

Health Club (2); Commercial
Club (2); Hilltop Staff (4);
Forum (4).



Jodywater



EDITH FRANCES COCKCROFT
"Ede"

married

Priscilla

PRISCILLA COGGESHALL



married

married

died



ALVIN JOHN CONNORS, JR.
"Al"

"Al"
Engaged
dead

ANNA DORIS CONROY
"Dot"
Commercial Club (3, 4).



JOHN JOSEPH CONWAY
Commercial Club (2, 3, 4).

RUSSELL THOMAS COOPER
"Russ"
Electrical Club (3, 4).



KENNETH EARL COPELAND

Ellen

ELLEN CECILIA COPPINGER

Home Room Director (2); Secretary of S. A. A. (2); Dramatic Club (3, 4); Forum (3, 4); Hill-top Staff (4); Advisory Committee (4); Debating Team (3, 4—Captain 4).

Bill Howard

married





HELEN LOUISE COTTER

Home Room Director (3); Library Aids (3); Dance Committee (4); Dramatic Club (4).

*marie
Thank to the
and Jimmy 1970*

JAMES BENEDICT COYLE

"Jim"—"Jimmy"

Home Room Director (2); Orchestral Club (2); French Club (2); Forum (2, 3—Sergeant-at-Arms 3); Band (2, 3, 4); Library Aids (2, 3, 4—President 4).



IRENE HELEN CROISETER

GEORGE ALOYSIUS CROSSON

"Red"

Basketball (3); Football (3, 4).



KENNETH LEONARD CUSHMAN, JR.

"Bud"—"Ken"

Football (3); Basketball (3).

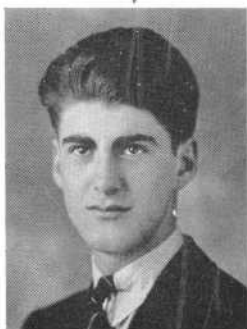
Ken Cushman

ANNA MARY CZERWONKA





married



CHARLES EDWARD DAGNALL, JR.

"Hot-Cha"—"Chuck"

"Charlie" Dagnall

THOMAS LEO DOYLE DALEY

"Tom"—"Tommy"

Home Room Director (1); Orchestral Club (2, 3, 4); Ensemble (2, 3, 4); Band (2, 3, 4); Advisory Committee (4).



ERNEST ANTHONY DALLAIRE

Orchestral Club (2); Band (2, 3, 4).

ANTHONY JOSEPH D'AMBROSIO

"Ninny"

Class Basketball (1).



ANDREW GEORGE DANGELAS

"Andy"

Band (2, 3); Commercial Club (3).

ARTHUR GEORGE DANGELAS

"Art"

Orchestral Club (2).





ELIZABETH DAVIS

"Peanuts"



ALDO DEBENEDICTIS

Home Room Director (2, 3, 4);
Pin and Ring Committee (3);
Class Vice President (4).



LOUIS DeBONIS

"Louie"

Football (2, 3, 4—Captain 4);
Baseball (3, 4); Varsity Club (4).



WILLIAM JAMES DESMOND

"Bill"

Band (2, 3, 4); Basketball
(4); Varsity Club (4).



GERMAINE M. DESTREMPs

Home Room Director (1, 2);
French Club (2); Commercial
Club (2, 3, 4).



ALLAN MCCOY DEXTER

"Al"

Football (3, 4); Varsity Club (4).



SOPHIE DIAS

Commercial Club (2, 3, 4).



ANDREW ANTHONY DIGIAMMO

"Digi"—"Andy"



JOHN JOSEPH DONEGAN

"Johnny"

Track (3); Commercial Club (3, 4).

"Jack"
married


EVELYN PATRICIA DONNELLY

"Eve"

Commercial Club (2, 3, 4).

Evelyn

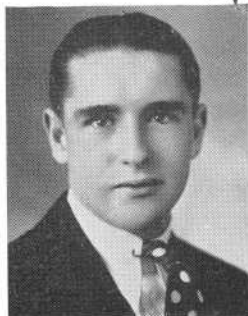

HELENA ANNE DOWNEY

"Helen"

Commercial Club (2).

Helena
married


SUZAN GERTRUDE DRISCOLL



FRANK WILLIAM DROHAN

"Frankie"

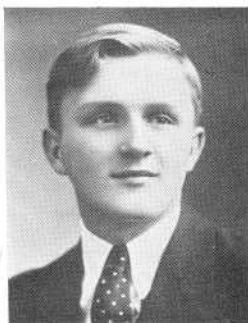
Commercial Club (2, 3, 4).

married
Frankie Drohan



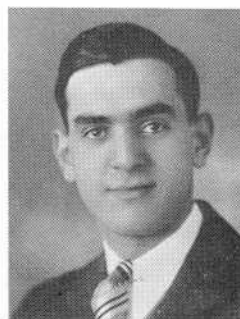
JAMES JOSE DUARTE

"Jimmie"



EDWARD ARTHUR DUBIEL

married
19



CARLTON DUBITSKY

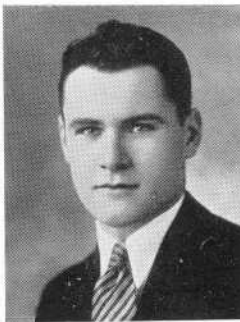
"Carl"

Baseball (1); Football (2, 4);
Basketball (2, 4); Varsity Club
(4); Track (4).



RUTH MARY DUFFY

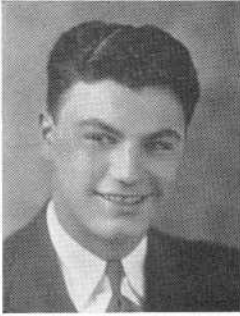
Ruth Duffy



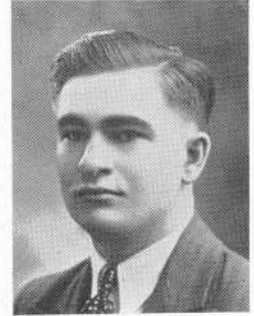
THOMAS BRENDEN DUGGAN

"Tom"

Football (4); Varsity Club (4).



JOSEPH FRANCIS DUMAIS
"Joe"



PHILIAS DUMAS
"Phil"

Baseball (2, 3, 4—Captain
4); Varsity Club (3, 4);
Traffic Squad (4).

Phil Dumas



A. HENRY DUPUIS



JOSEPHINE DZIOK
"Jo"

Commercial Club (1, 2, 3).

married



CHARLES LESTER EALES
"Slip"

Home Room Director (2, 3, 4).



GRACE MARTHA EDDLESTON



JANICE LYDIA EDMONDS

"Jan"

Health Club (2); Basketball (2);
Dance Committee (2, 4); Home
Room Director (3); Library Aids
(3); Dramatic Club (3, 4).

married



LOUIS EISMAN

"Lou"

Football (2); Basket-
ball (2); Forum (4).



JOHN H. ELLIS

"Johnny"

*to Carey
13*



NANCY BARSTOW ELLIS

Home Room Director (2, 3,
4); Library Aids (4).



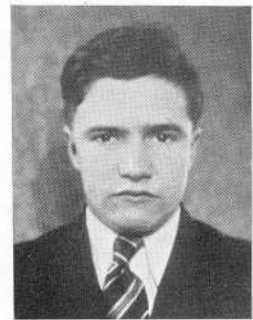
EDWARD EMISON

"Eddie"

BENJAMIN WILLIAM ENTWISTLE

"Bun"

Commercial Club (4).





married



EDNA ADELINE FAHEY

Chorus (3, 4—Secretary 4).

*Teaching Spans
Jany 13*

MARGARET MARY FAHEY

"Peg"—"Peggy"

Basketball (2); Commercial Club (2, 3, 4).



"Peg"



JOAN THERESA FALLON



MARY ELIZABETH FALLON



STEPHEN WALTER FARYNIARZ

"Steve"

Stephen W. Faryniarz

EDMUND THOMAS JOSEPH FEATHERSTONE

"Fire"

Electrical Club (3, 4—Treasurer 4).



Kied



DAVID JOSEPH FERRIS

"Dave"

Dave Ferris

MARY GONSALVES FIDALGO



RICHARD H. FISH, JR.

"Dick"

Home Room Director (2); Band
(2, 3, 4—Student Conductor 3, 4);
Orchestral Club (4).

Dick Fish

DANIEL THOMAS FITZGERALD

"Fitzie"

Commercial Club (3).



MARY MADELINE FITZGERALD

"Fitzie"

Basketball (3); Commercial Club
(3); Baseball (3, 4); Dramatic
Club (4).



MARGARET MARY FLANAGAN

"Mickey"



ROSELLA MARIE FLEMING

Commercial Club (4).



EVELYN FLETCHER

Health Club (2); Commercial Club (2, 3, 4).



DORIS RUTH FLEURY

"Dot"

Health Club (2); Commercial Club (2, 3).



HELEN DOLORES FLYNN

"Flynnie"

Commercial Club (2, 3).



ROSE LOUISE FLYNN

"Flynnie"

Commercial Club (2, 3, 4).



DAVID ISAAC FORMAN

"Dave"



HELEN LOIS FREEDMAN

Commercial Club (2, 3, 4); Hill-top Staff (3); Home Room Director (4); Forum (4).

Died

MILTON FREEDMAN

"Myler"

Baseball (3); Basketball (3, 4); Football Manager (4); Tennis (4); Varsity Club (3, 4).



VIRGINIA WILBER FROST

"Ginnie"

Home Room Director (2, 3); Vice Pres. Design Guild (3).

School Treasurer

JOSEPH BORDEN FULLER

"Joe"



FRED THOMAS FURTADO

"Freddy"

Phi

RITA F. GALLERY

"Rete"

maison





JEANNE THERESE GAUTHIER

"Jeannie"

Commercial Club (4).

*married?
28*



RITA URSULA GILLIGAN

Dramatic Club (3, 4).



SANFORD G. GOLDSTEIN

"Sam"—"Sonny"

Baseball Manager (4); Baseball
Committee (4); Traffic Squad (4);
Forum (4)

married?
*your pal
Sammy*



ALLAN LESTER GOLLIS

"Al"

Forum (2, 3).



RUTH LILLIAN GOLLIS

"Ruthie"

Home Room Director (2); Dance
Committee (3); French Club (3);
Forum (3).

*married?
wishes
22*



WILLIAM BERNARD GORALNIK

"Lefty"

Lefty



WILLIAM FRANCIS GOYETTE
"Bill"

Class Baseball (1); Track (1, 2,
3, 4—Captain 4); Health Club (2);
Varsity Club (3, 4—President 4).

"Bill"



MARY EILEEN GRANT

Basketball (2, 3, 4);
Dramatic Club (3, 4).

Eileen

married



HELEN GREENSTEIN

married
Principal
F.R.

Greg Gregory

CHARLES FREDERICK GREGORY, JR.

"Greg"—"Charlie"

Track (2, 3, 4).



ALFRED LESTER GRIMES
"Al"—"Duke"

"Duke"

KING ASA GRINNELL
"Asa"—"KA"

Track (3, 4).

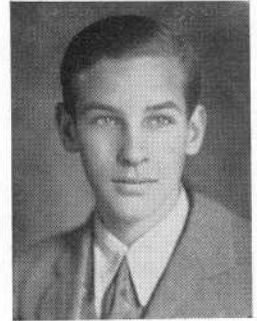
dead





LENORA GROZEN

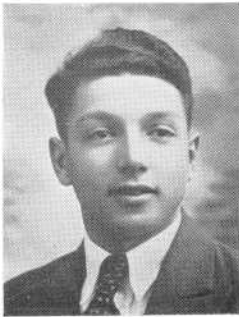
Pin and Ring Committee (3);
Forum (3, 4); Library Aids (4);
Associate Editor Record Book
(4).



ROBERT FRANCIS GUNNING

"Bob"

Electrical Club (2, 3, 4—Secretary 4).



MICHAEL PAUL HABIB

"Red Mike"

Electrical Club (3, 4).

"Mike"
EF

married



ELEANOR WILLIAMS HALL

"El"—"Billie"

Health Club (2); Class Vice
President (3); Home Room Dir-
ector (2, 4); Orchestral Club
(2, 3, 4); Ensemble (2, 3); S. A.
A. Councillor (4).



AGNES THERESA HALPIN

"Aggie" "Scoop"

Hilltop Staff (2, 3, 4); Dramatic
Club (4).

Engaged

*Agnes
Halpin*

THOMAS WILLIAM HAMMOND

"Tom"—"Tommy"

Baseball (2, 3); Basketball (2,
3, 4—Captain 4); Football (3, 4);
Varsity Club (3, 4); Traffic Squad
(4).

married



*Principal
Hawfee*

Tommy



BERTRAM BENCE HARDY

"Bert"

Orchestral Club (2, 3, 4);
Band (2, 3, 4); Traffic Squad
(4).



HELEN GRACE HARGRAVES

Commercial Club (3).



FRANCES JULIA HARRINGTON

"Fran"

JAMES JOSEPH HARRINGTON, JR.

"Hank"—"Jimmie"

President Health Club (2); Football (3,
4); Basketball (3, 4); Varsity Club (4);
Traffic Squad (4).



"Hank."



MAURA ANNA HARRINGTON

Commercial Club (2, 3).

EDWARD DRAKE HARVEY

"Ed"—"Eddie"

Home Room Director (2, 3, 4);
Advisory Committee (4); Library
Aids (4).



Ed Harvey



married



NORMAN HORROCKS HARVEY

"Mutt"—"Norm"

"Norm" H.



MARGARET LOUISE HAYDEN

"Marge"

Home Room Director (2); Dance Committee (2); Basketball (2); Library Aids (3).

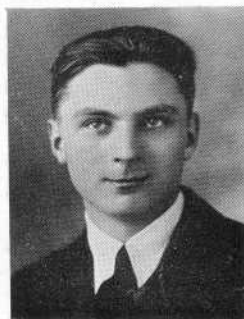
married



ROBERT JOSEPH HAYDEN, JR.

"Bob"

Orchestral Club (2, 3, 4); Ensemble (2, 3, 4); Band (2, 3, 4).



WALTER HEFKO

"Wally"

Home Room Director (2).



RITA MARIE HEFLIN

Commercial Club (2, 3, 4).

married



HELEN LOUISE HENNESSEY

Health Club (2); Commercial Club (2, 3).



WILLIAM FRANCIS HERLIHY

"Bill"

Track (3, 4); Electrical Club (4).

Wm. F. Herlihy


JAMES VERNON HEYWOOD

Health Club (2); Track (2, 3, 4); Dramatic Club (3, 4); Commercial Club (4); Chorus (4).

James Heywood


RUTH ALICE HEYWOOD

"Ruthie"

Home Room Director (2, 4);
Class Secretary (4).
"Dot"


DOROTHY FRANCES HIBBERT

"Dot"



RITA ELIZABETH HICKEY

"Betty"

*Betty
married
Elizabeth*


KENNETH RAYMOND HIGGINS

"Ken"—"Hig"

Ken



MARY CRONAN HINCHEY

Cheer Leader (3); Dance Committee (3); Dramatic Club (3, 4—Recorder 4).

Mary

married

LYDIA VINCENT HINCKLEY

"Vinnie"

Orchestral Club (3, 4—Concert Master (4).

Recorder?



ALICE IRENE HODGINS

Commercial Club (2, 3, 4).

ELIZABETH MARIE HOLLIDAY

"Betty"

Commercial Club (2, 3, 4).



married



EDITH ESTELLE HOPKINSON

"Hoppy"

Commercial Club (2, 3, 4);
Traffic Squad (4).

ISIDORE PHILIP HORVITZ

"Izzy"

Forum (1, 2, 3, 4); Home Room Director (3, 4); Dramatic Club (3, 4); Football (3, 4); Varsity Club (4).





WILLIAM HORVITZ
"Bill"

"Bill"

Married



MARGUERITE CONANT HURST
"Marge"
Commercial Club (2, 3, 4).



JOSEPH DANIEL IADICOLA
"Joe"



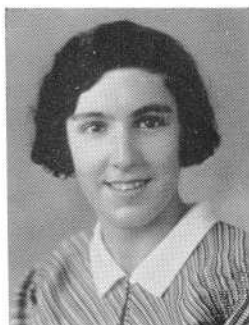
EVA MARION IMBRIGLIO



ROBERT JACKSON
"Bob"



GOTTLIEB ALEXANDER JACOB
"Jake"
Library Aids (2).



MARY MONICA JEROME

Dramatic Club (4).



ALFRED VINCENT JONES

"Al"—"Bud"



ANNA MAE JONES

Design Guild (3).



GLADYS JONES

"Pal"

Commercial Club (3);
Dramatic Club (3, 4).

WILLIAM ABRAHAM KALIFF

"Bill"



ROSE HAZEL KAPLAN

"Go-zy"

Commercial Club (2, 3, 4).



died



HILDA ANNA KATERSKY

"Hil"

Dramatic Club (3, 4); Forum (4).



GERTRUDE VERONICA KEATING

"Gert"

Design Guild (3, 4).

married



ALICE KENYON KEIGHLEY

Commercial Club (3, 4).



ETHEL MARY V. KENNEDY

Home Room Director (2);
Health Club (2); Basketball
(2, 3, 4); Forum (3, 4); Dra-
matic Club (4).

*G. Patten
4/3*

married



IRENE KERNES

"I"—"Kernie"

Home Room Director (1); Hilltop Staff
(2, 3, 4—Business Mgr. 3—Associate Editor
4); Dramatic Club (3, 4—Pres. 4); Forum
(2, 3, 4—Sec. 4); Sec. Library Aids (3, 4);
Dance Committee (3); Advisory Com-
mittee (4); Assistant Business Manager
Record Book (4).



PAUL WINTHROP KIDD

Orchestral Club, (2, 3, 4);
Band (2, 3, 4).



KATHRYN VIRGINIA KIENCKE

"Kay"

Dramatic Club (3); Design
Guild (3, 4—President 4).

"Kay"
Union
married



MARY PATRICIA KILEY

"Pat"

Hilltop Staff (3); Drama-
tic Club (3, 4).

EVELYN KING

"Eve"

Commercial Club (2, 3, 4).



DOROTHY JEAN KIRBY

"Dot"

Baseball (2); Volleyball
(2, 3); Basketball (2, 3, 4).

JAMES JOSEPH KIRBY, JR.

"Jim"—"Jimmy"

died



JOHN EDMOND KIRBY

"Jack"

Health Club (2); French
Club (2); Dramatic Club (3,
4); Home Room Director (4);
Traffic Squad (4).

accountant



RUTH JOAN KIRBY

Baseball (2); Volleyball
(3); Basketball (2, 4).



ANNAH LOIS KIRKER

Class President (1); Home
Room Director (1); Hilltop
Staff (4).



ISABEL MARY KIRKMAN



JOSEPH JOHN KIRKMAN

"Joe"



JESSICA BROADHURST KNOTT

Commercial Club (3, 4—Secretary 4).



EDWARD M. KOCON

"Ed"



ADELINE BARBARA KOSIOR

"Ad"

Commercial Club (1, 2, 3).



EMELIA JOANNA KOSIOR

Commercial Club (3, 4).



MARY IRENE KOZAN

Commercial Club (3, 4—
Treasurer 4); Record Book
Staff (4).

PEARL HELEN KRAVIF

Chorus (3, 4).



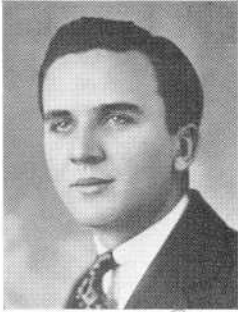
STANLEY JOSEPH KRET



WALTER FRANK KROL



did



MATTHEW JOSEPH KUSS

“Matt”—“Matty”

Track (3, 4); Football (4); Varsity Club (4).



LORRAINE M. LAMBERT

Commercial Club (2, 3, 4).



ROGER CLARK LAMBERT

“Bud”

Home Room Director (1, 3, 4).



CARLOS EARL CLIFFORD LANE

“Lanie”

Electrical Club (4).



MARION WALCOTT LANE

Commercial Club (2, 3, 4).



DORIS GERTRUDE LANNON

“Dot”

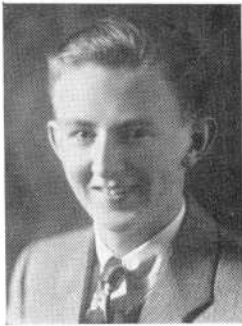
Commercial Club (2, 3, 4).



CLARICE R. LEACH
"Russ"



ELMER WINSTON LEACH
Commercial Club (4).



QUINLAN FRANCIS LEARY
"Quinny"

Band (2, 3, 4).

"Quinny"

Raymond Leary, Jr.?



RAYMOND LEARY, JR.
"Ray"

Orchestral Club (2); Band
(2, 3, 4).



VIOLA MAE LEBOEUF
"Vi"

Home Room Director (2, 3, 4);
Secretary Design Guild (4).



REGINALD ALPHONSE LETOURNEAU
"Reggie"

"Reggie"



FRANCIS EDGAR LEVESQUE
"Frank"



GEORGE FRANCIS LEVESQUE
Basketball (4).



MARIE REINE LEVESQUE
"Queenie"



BESSIE LEVINE
"Betty"



SIDNEY LEVINSON
"Sid"

Orchestral Club (1, 2, 3, 4—
Secretary 2, 3—Bus. Mgr. 4);
Ensemble (1, 2, 3); Forum (1,
2, 4); Band (2, 3, 4—Business
Manager 4); Hilltop Staff (4).



EDWARD JOSEPH TRAVASSOS LIMA
"Eddie"—"Doc"



LILYAN GERTRUDE LISS

ARTHUR JOSEPH LIZOTTE
"Art"DOROTHY RITA LOGAN
"Dot"THELMA FRANCES LOUDON
"Thel"
Commercial Club (2, 3).

married

FREDERICK CHARLES LOUGH
"Freddy"

Class Vice President (2); Class President (3); Treasurer Forum (3); Home Room Director (2, 3); Orchestral Club (2, 3); Band (2, 3); Baseball (3, 4); Class President (4).

SHELDON LUBINSKY
"Lubin"

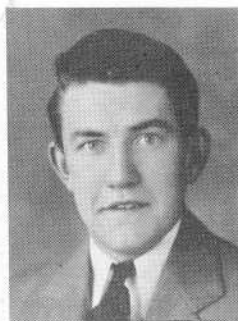


REGINA KATHERINE LYNCH

"Jean"—"De De"

Commercial Club (2, 3, 4).

"Jean"



JOHN ANTHONY LYONS

"Jack"

Football (3, 4); Varsity Club (4).

"Jack"



ANNA LAURINE MACDONALD

Home Room Director (2); Dramatic Club (3, 4); Hilltop Staff (4); Forum (4).

Laurine



BERNIGOLDE MACY

"Bernie"—"Goldie"

Health Club (2); Dramatic Club (3, 4).



EILEEN M. MADDEN

"Mitzi"—"Babe"

Commercial Club (2, 3, 4).

Kathleen Maher

KATHLEEN TERESA MAHER





LEONA MARY MALLOZZI

"Lee"

Home Room Director (1);
Health Club (2).

LORETTA DOROTHY MALONEY

"Mally"

married



CLEOPATRA MALTEZOS

"Cleo"

Design Guild (3, 4).

Cleo

ISAAC F. MANCHESTER, JR.

"Ike"—"Skipper"



RUSSELL GIFFORD MANCHESTER

"Russ"

"Russ"

BETTY MANISHEFSKY

Commercial Club (2, 3, 4).





*married to mary
she died*



REGINALD C. MARCHAND
"Reggie"



CLARA ORTON MARTIN
"Claire"—"Candy"
Home Room Director (1);
Design Guild (4).



KERMIT CLIFFORD MARTIN

Ker Martin



RICHARD THOMAS McANDREW
"Dick"—"Mac"

"Dick"

d 1979

Goodie

CAROLYN LANGLEY MCCARTHY
"Goodie"

Basketball (2, 4); Dramatic Club (3, 4); Dance Committee (3, 4); Sports Committee (3, 4); Home Room Director (4).



Married

ELINOR CLAYTON MCCARTHY
"Mac"

Baseball (2); Basketball (2, 3, 4—Captain 4); Dramatic Club (3, 4); Captain Cheer Leaders (4).



Married



MARGARET EVELYN McCONNELL
Commercial Club (2, 3).



MARY LOUISE McDERMOTT
Commercial Club (2, 3).

*married Joseph H. Smith
February 20, 1939
SON 1951*

*Mary
McDermott*



JAMES BRADY McGUIRE
"Jim"—"Jimmie"

S. A. A. Councillor (2);
Dramatic Club (3, 4).



LORETTA McHUGH
Commercial Club (2, 3, 4).

died

*Gaerua Drummer Rep.
Broue Unit.
University of Dublin
married*



ANDREW JAMES McINTYRE

"Andy"—"Mac"

*married Hope Gordon Thatcher
February 17, 1940
daughter - Ann - born 5/1942 died
daughter Christine -*

EILEEN MARY McKNIGHT



*Textile School
died June 4, 1995
Help*



EVELYN McKNIGHT

died "Blondie"

married 1935



JULIA B. McMAHON

"Suds"

Commercial Club (4).



GRACE RUTH McMURRAY

married Harold Black
daughter Wainlyn



CATHERINE PATRICIA McPARTLAND

"Kay"—"Mac"

married 1935—



JOSEPHINE MEDEIROS

"Kid Joe"

Commercial Club (4).



VICTOR MELLO

"Vic"

Health Club (2);
Football (2).



BERNARD GEORGE MERCIER

"Bernie"

Band (2, 3); Orchestral Club
(2, 3, 4).



BENJAMIN ASSAD MICKOOL



DAVID CHARLES MILLER



JANET LOUISE MILLER

"Jan"



FRANCES CHARLOTTE MILLS

Commercial Club (3, 4).



STANLEY JOHN MIS

"Stan"

Home Room Director (2, 3, 4);
Football (2, 3, 4); Basketball (2,
3, 4); Varsity Club (3, 4).



CONSTANTINE MITCHELL

"Connie"—"Gussie"

S. A. A. Councillor (4);
Dramatic Club (4).

Gus Mitchell

Charles Mitchell

THOMAS FRANCIS MONAGHAN, JR.

"Tom"—"Tommy"

Library Aids (2); Forum (2, 3, 4—
President 4); Dance Committee (3, 4—
Chairman 4); Dramatic Club (3, 4);
Hilltop Staff (4).



MARY MONIS

"Dimples"

Commercial Club (2, 3, 4).

Mary Monis



Thomas Moore

THOMAS JAMES MOORE

"Tom"—"Sinkey"



PHYLLIS VIRGINIA MORASH

"Phyl"

ELIZABETH JEAN MORGAN

"Betty"

Commercial Club (2, 3).





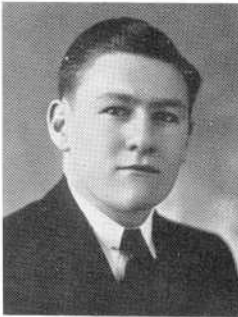
JOHN MORRIS

"Johnny"

Advisory Committee (4).



HELEN MOSSOFF

Home Room Director (2);
Commercial Club (2, 3, 4).

LINUS JOSEPH MULLALY

"Liney"

Track (2, 3, 4); Commercial
Club (3); Basketball (4).

"Liney" Mullaly

Bob

ROBERT EDWIN MULLEN
"Bob"

WILLIAM JOSEPH MULLEN

CLAIRE MURPHY

S. A. A. (Councillor 2—Vice President 3); Home Room Director (3, 4);
Dramatic Club (3, 4); Debating Team (4); Gift Committee (4).



RITA FLORENCE MURPHY
"Ree"

Conie Palletier
married

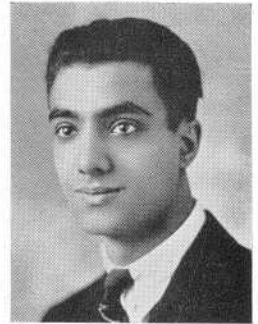
WILLIAM NORBERT MURPHY
"Murph"—"Blondie"



MIRIAM ALICE MURRAY

Health Club (2); Design
Guild (3, 4).

MICHAEL NASSIF
"Mike"



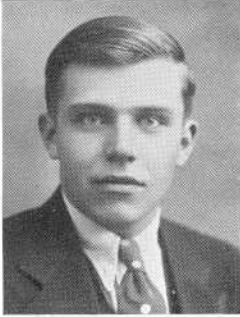
EDWARD FRANCIS NELLIGAN
"Ted"

Commercial Club (2, 3, 4).

THOMAS WILLIAM NEWBURY
"Tom"—"Tommy"

Home Room Director (3); Bris-
tol County League Delegate (4);
Sports Committee (4); Forum (4).





WALTER B. NICHIPOR

"Walt"

Home Room Director (2).

Druggist

married



GRACE PATON NICOL

Dramatic Club (3, 4);
Hilltop Staff (4).

EDNA CLEMANTINE NOWELL

Library Aids (3, 4).



IRENE THELMA DOLORES O'BRIEN

"Briney"

Commercial Club (3, 4).



PAULINE CATHERINE O'BRIEN

Home Room Director (3, 4);
Design Guild (3, 4).

THOMAS JOSEPH O'GRADY

"Tom"—"Tommy"

Forum (2, 3).



MILDRED RUTH PANSY

"Milly"

Orchestral Club (2, 3, 4);
Dramatic Club (3, 4—Secretary 4).
Mildred

NORMAN ANTHONY PAQUIN

"Norm"

Commercial Club (3, 4);
Dramatic Club (4).

HAZEL DORIS PARADIS

"Dorry"—"Dot"

Hilltop Staff (4).

Hazel

GABRIEL VIRGIL PARISE

"Gabe"—"Mitchell"



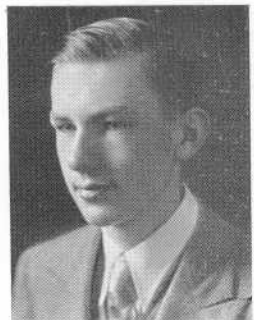
ANNE PARKER

Anne

JAMES ALOYSIUS PARTRIDGE

"Jim"

Record Book Staff (4).





MARJORIE LOUISE PATTEN



MARY RITA BARBARA PHELAN



HELEN JOAN PHILLIPS

"Dynamite"

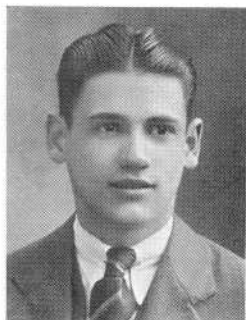
Class Secretary (2); Home Room
Director (2, 3); Cheer Leader (3);
Pin and Ring Committee (3); Dra-
matic Club (4); Basketball (4);
Baseball (4).



SHIRLEY LILA PHILLIPS

"Gracie"—"Greta"

Commercial Club (2, 3);
Forum (4).



ALFRED MATHEAU PIMENTAL

"Al"—"Chief"

Health Club (2); Traffic Squad (2, 3, 4—
First Lieutenant 3—Captain 4); Dramatic
Club (4); Electrical Club (4); Forum (4).



RAYMOND PLOURDE



ANNETTE FRANCES POIRIER

"Ann"

Baseball (2); Basketball (2, 3, 4).



FRANCES POPKIN

"Poppy"—"Fannie"

Commercial Club (2, 3); Basketball (3); Dramatic Club (3, 4).



EUSTELLE HOPE POWERS

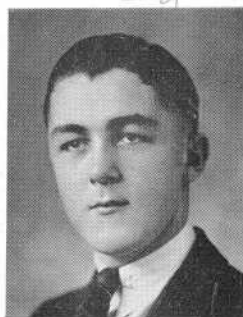
"Eusty"—"Stell"

Commercial Club (2, 3); Tennis (2, 3, 4—Girls Champion 2); Dramatic Club (3, 4).



MARION ELIZABETH PROCTOR

Dramatic Club (3, 4).



WILLIAM MARSHALL PURDY, JR.

"Bill"

married
Bill Purdy

FREDERICK CHARLES QUINN, JR.

"Fred"—"Freddie"

Home Room Director (2, 4); Tennis (2, 3, 4—Captain 4); S. A. A. Councillor 3—President 4; Varsity Club (3, 4); Traffic Squad (4).


Frederick Quinn
Ray O'Connell dir
removed from list in 1919



GEORGE ANTHONY QUINN

"Cue"

Health Club (2); Football (3, 4);
Varsity Club (4); Traffic Squad (4).

George Quinn

ALBERT ISRAEL RACHLIN

"Rack"—"Al"

French Club (2); Dramatic
Club (3).

AGNES GERALDINE RAFTERY

"Gerry"

Home Room Director (3).

married

HELEN RAWSTON

Commercial Club (3).



VIOLET MAE READING

"Vi"

"Sammy"

SAMUEL REBACK

"Sam"—"Sammy"





LOUISE ANNE REEVES

"Lou"—"Weeza"

*married
Ed. Cassin
1938*



HENRY WALTER REIS

"Hennie"

Henry



HELEN LOUISE REYNOLDS

Commercial Club (2, 3, 4); Chorus (4).

Helen Reynolds

1978

married



DOROTHY FRANCES RICHARDS

"Dot"—"Dottie"

Class President (2); Home Room Director (2); Basketball (2, 3, 4); Chairman Pin and Ring Committee (3, 4); Chairman Gift Committee (4).



HAROLD JOSEPH RICHARDSON

"Dick" Riley



RICHARD ANTHONY RILEY

"Dick"

Record Book Staff (4).

*Chairman of Board
of Directors of
Boys' Club
Alumnae*



EVELYN FRANCES DOLORES ROACH

"Mickey"—"Gay"

Commercial Club (2, 3, 4).

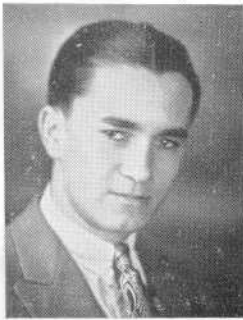
James Ambrose Roach
183

JAMES AMBROSE ROACH

"Jimmy"—"Amby"



Married

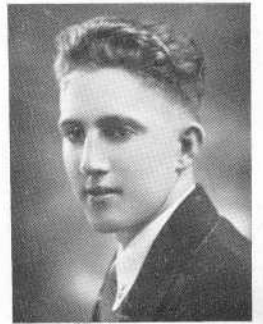


EDWARD FRANCIS ROSE

"Rosy".

CHARLES MICHAEL RYAN

"Charlie"—"Rosy"



BEATRICE SALCA

"Bee"—"Beattie"

Commercial Club (3, 4).

ALMA SAMSON

Home Room Director (4).





HAROLD EVERETT SANFORD

Home Room Director (1);
Orchestral Club (2, 3, 4).



RACHEL ROSE SANFT

"Ray"

Commercial Club (3).

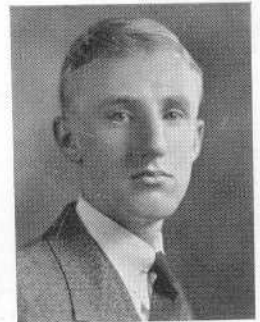
Married



MILDRED MARGARET SCHOLES

"Milly"

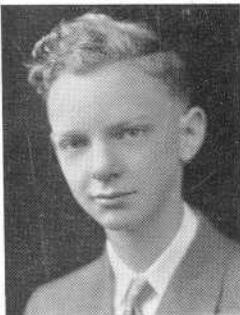
Commercial Club (4).



NORMAN PARNELL SEAGRAVE

"Norm"—"Slee"

Home Room Director (2, 4); Pin
and Ring Committee (3); Forum
(3, 4); Debating Team (4); Record
Book Staff (4).



CARLTON ARTHUR SEXTON

"Carl"

Marie

MARIE VIRGINIA SHALLOO

Class Secretary (3); Dramatic
Club (3, 4).





JEANNE SHAPIRO

Orchestral Club (2, 3); Ensemble
(2, 3); Chorus (3, 4—President 4);
Dramatic Club (3, 4).



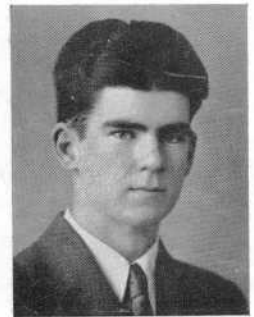
DANIEL FRANCIS SHAUGHNESSY

"Dan"—"Speck"



HENRY FRANKLIN SHEA

Home Room Director (3);
Record Book Staff (4).



JOHN TIMOTHY SHEA

Library Aids (4).



MARJORIE BARBARA SHEA

"Marge"

Dramatic Club (4).

Marjorie Shea



JOHN FRANCIS SHEAHAN

"Jack"



ESTHER MARY SHERRY
"Ess"—"Sneeze"



NATHAN SILK
"Nate"—"Slick"
Orchestral Club (1, 2).



ANNIE CATHERINE SIMMONS
"Kay"

Treasurer Health Club (2);
Hilltop Staff (4).

Kay

Ginny
"Ginny"

VIRGINIA SLINN

Home Room Director (2); Health
Club (2); Basketball (2, 3, 4); S. A.
A. Councillor (3); Dramatic Club
(3, 4); Forum (4); Cheer Leader (4).

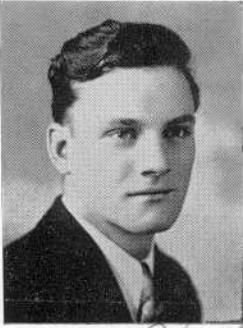


SARAH SLUDSKY
"Scrrie"

Dramatic Club (3, 4); Forum (4);
Record Book Staff (4).



ANNA LILLIAN SMITH
"Ann"



HAROLD NORMAN SMITH
"Smiddy"

Track (3); Football (3, 4);
Varsity Club (4).

*Harold
Smith*



RITA MARIE SMITH
"Reet"—"Smitty"

Smitty



PAUL SOULIER

Health Club (2); Com-
mercial Club (4).

Paul Soulier & 1977?
accountant

Grad 1985

Evelyn

EVELYN MARIE SOUZA



VICTOR OLIVEIRA SOUZA
"Vic"

Track (2, 4); Tennis (4).

Vic Souza

FRANK WINSTON SOWTER
"Sow"





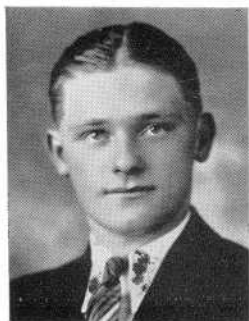
ELLEN STAFFORD

Commercial Club (4);
Chorus (4).



GLADYS MARIA STANKIEWICZ

Commercial Club (3, 4).



MITCHELL STASHKOW

"Mike"—"Stash"

Home Room Director (1, 2, 3).

Mitchell Stashkow



EVELYN STEINBERG

Forum (3, 4); Record
Book Staff (4).



EDWARD GEORGE STEININGER

"Ed"—"Cap"

Basketball (2, 3, 4); Football (4);
Varsity Club (4); Traffic Squad (4).



ALICE PATRICIA STOPFORD

Commercial Club (2, 3, 4).



THOMAS COCHRAN STOREY
"Tommy"



DANIEL EUGENE SULLIVAN

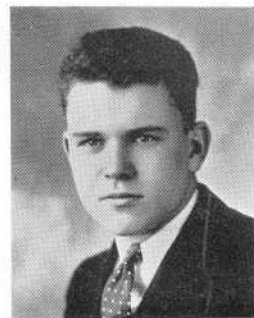


ELIZABETH MARIE SULLIVAN
"Betty"

Health Club (2); Commercial
Club (3); Home Room Director
(2, 3, 4).

Betty
Frank Sullivan
1974

GEORGE HENRY SULLIVAN, JR.

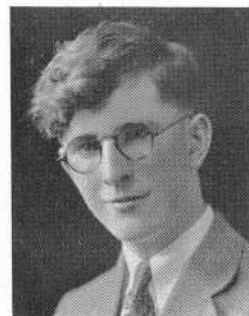


JOHN DENNIS SULLIVAN
"Sully"

Home Room Director (4).

Sully

JOHN EDWARD SULLIVAN

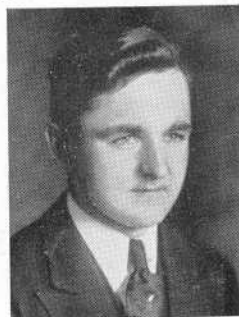




JOHN FRANCIS SULLIVAN

"Sully"

Health Club (2); Commercial Club (2, 3, 4).

married*Sully.*

JOHN MITCHELL SULLIVAN



MARIE THERESE SULLIVAN

"Sully"

married

MARY ANGELA SULLIVAN

"Sully"

Commercial Club (2, 4).

*Marie*

MARY CATHERINE SULLIVAN

"Sully"—"Mary C."

Basketball (2, 3); Home Room Director (3).

*married**Mary C.*

MARY C. E. SULLIVAN

"Sully"

Health Club (2); Basketball (2); Commercial Club (2, 3); Traffic Squad (4); Forum (4).

married



married

RITA PATRICIA SULLIVAN

"Sully"—"Pat"

Chorus (3).

RITA PATRICIA SULLIVAN

"Sully"—"Pat"

Basketball (2, 3).



married

*7 Dishes
Engaged*

Rita



*married
Hugh Golden*

RUTH MARY SULLIVAN

VINCENT CURLY SULLIVAN

"Vin"—"Sully"



Wash



WILLIAM FRANCIS SULLIVAN

Billy Sullivan

JOHN SWAILES

"Swailzy"

"Swailzy"





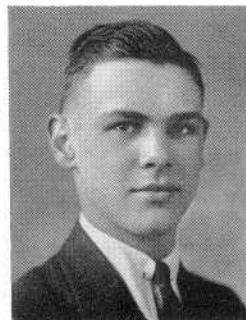
YVETTE BERTHE TETRAULT

Commercial Club (2, 3, 4).

Bob Thomas

ROBERT MANSFIELD THOMAS

"Bob"—"Tom"

Home Room Director (2, 3, 4);
Sports Committee (4); Track (4).

REBECCA EVELYN TILLIS

"Reba"—"Tillie"

Commercial Club (2, 3, 4);
Basketball (4).

CATHERINE MARGARET TOBIN

"Kay"—"Kathleen"

Tennis (3); Business Manager
Hilltop (4).

RICHARD FRANCIS TOBIN

"Dick"

SUTELLE TOBIN

"Sue"

Commercial Club (2, 3, 4).





MARJORIE LUCY TODD

Commercial Club (2, 4);
Record Book Staff (4).



STELLA H. TOKARZ

"Snooky"

Commercial Club (2, 4).



MARGARET LOUISE TOMPKINS

"Marge"

Commercial Club (3).

"Eddie"



EDWARD VINCENT TOOLIN



GEORGE FRANKLIN TOWERS

Geo F Towers



DOROTHY VIRGINIA TRENHOLME

"Dot"—"Trenny"



RUTH ANNA TRIPP

"Ruthie"

Commercial Club (4).



THERESA THELMA TUBLIN

"Terry"

Commercial Club (2, 3, 4).



ABRAHAM TULCHIN

"Abe"

Orchestral Club (1); Band (2);
Forum (1, 4); Debating Team (4).

HELEN LOUISE TURNER

First Aid Club (3).

Abraham Tulchin



PETER TUROWETZ

"Pete"

Orchestral Club (1); Band (2);
Football (2).

EVELYN ULANOFF

"Eve"

Chorus (2); Hilltop Staff (3, 4);
Dramatic Club (3, 4); Forum (4);
Record Book Staff (4); Traffic
Squad (4).

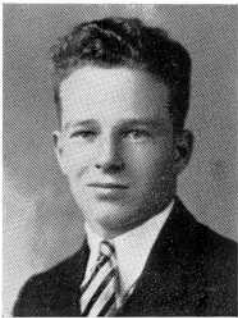


JOHN LEWIS VARGAS, JR.

"Johnny"

Johnny
married

GRACE MARGARET VAUGHAN

Home Room Director (2);
Dramatic Club (4).

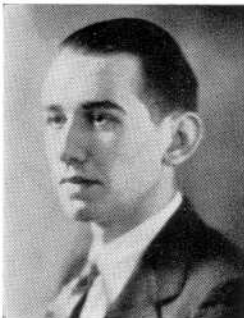
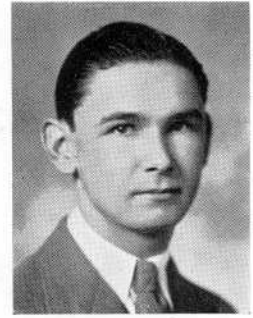
HUGO VICTOR VIOLETTE

"Hughie"

Football (2, 3, 4);
Varsity Club (4).
married

VINCENT DANIEL WALSH

"Vinny"

French Club (2); Home Room
Director (3); Track Manager (4).

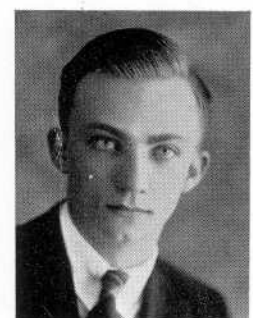
WILLIAM WALSH

"Bill"

Home Room Director (2).

JAMES WARBURTON, JR.

"Jim"—"Jimmy"

Home Room Director (3); Bristol
County League Delegate (3).



DWIGHT STOWE WARING, JR.

Forum (4); Debating Team (4);
Dramatic Club (4).



GERALD HAWKINS WARING

"Gerry"

Football (2); Traffic Squad (4);
Editor-in-Chief Record Book (4).

Gerry Waring



ELEANOR WATERMAN



JOHN ELLIOT WATKINSON

"Johnny"

Orchestral Club (2, 3, 4); Dra-
matic Club (3); Dance Committee
(3, 4); Chorus (3, 4).



IRENE CLAIRE WELSH

Commercial Club (2, 3, 4).

Irene Welsh

JOSEPH FRANCIS WHALON

"Joe"

Traffic Squad (4).





MARY RITA FRANCES WHITEHEAD

"May"

Basketball (2); Commercial
Club (2, 3, 4).

ARDELE WILBUR

Home Room Director (2, 3, 4).

Ardele

ANDREW ALLEN WILCOX

"Andy"

Football (2, 3, 4); Varsity Club
(3, 4); Chairman Dance Com-
mittee (3); Gift Committee (4).

FREDERICK JOHN WILDING

"Fred"

Home Room Director (2).

Fred Wilding

ALICE CECELIA WILSON

"Shorty"—"Al"

Commercial Club (2, 3).



HILDA SYBIL WING

Health Club (2).



VICTORIA MARY WISZ
"Vic"
Commercial Club (2, 3, 4).

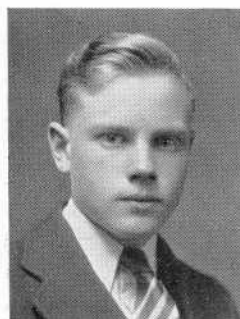


FRANK JOHN WOJTOWICZ



JOSEPHINE ORINA WRIGLEY

Art
ARTHUR YOUNG
"Art"



HILDA MABLE ZAGAJA
Commercial Club (2).

BERNARD HAROLD ZASS
"Buddy"—"Bernie"
Health Club (2); Orchestral Club
(1, 2, 3); Ensemble (3); Forum (1, 2,
3, 4); Dramatic Club (3, 4); Hilltop
Staff (1, 2, 3, 4—Editor-in-Chief 4);
Chairman Advisory Committee (4).





MELVIN ZASS

"Mel"

Home Room Director (1); Health
Club (2); Football (3, 4); Varsity
Club (4); Hilltop Staff (4).

General?

JOHN JOSEPH ARCHIBALD

CLINTON SQUIRE ASHTON

ALBERT GEORGE AUCLAIR

BENJAMIN O. AZEREDO

ALBERT BARNES

HELEN MANSON BEVERLY

ROMA FRANCIS BONNOYER

AUGUSTUS BRADFORD

EDWARD PAIVA BRANCO

LOUIS JOSEPH BSHARA

JAMES RAYMOND CAHILL

JULIAN ANTHONY CAPONE

THADEUS STANLEY CHRUPCALA

EDWARD GABRIEL CONFORTI

PRISCILLA SAFFORD DAMON

THOMAS FRANCIS DINUCCI

Tommy Di Yucci
JEANNETTE ISABELLE DOLBEC

CLEMENT JOSEPH DRISCOLL

DORIS FRANCES DURAND

MATTHEW RUPERT EALA

June 1970



ANTHONY EDWARD FAZZINA

JOHN TAVARES FELIX

ROBERT ANDERSON FITZGERALD

ARTHUR JOSEPH FORTIN, JR.

KAROL GALUSKA

ROBERT FRANKLYN HALL

MARGUERITE ANGELA HAMEL

LILLIAN BLANCHE HEBERT

HERMAN HELFENBEIN

FRANCIS XAVIOR KACZYNSKI

RAYMOND FREDERICK KELLY

HERBERT JAMES KENYON

ELEANOR KEARNS

RICHARD MILLER KNIGHT

MILTON KOSSOI

EDGAR HUBERT LAVOIE

HARRY MORTON LECHAN

MANUEL LEITE

ANNETTE M. LEVESQUE

BARNET LISS

DANIEL L. LOWE

GEORGE JOSEF LUCOVE

RAYMOND ROGERS MACHADO

JAMES ARTHUR MARSLAND

JEREMIAH JOSEPH McDONALD

CATHERINE LOUISE CECILIA MCGUIRE

JOHN JOSEPH MCGUIRE, JR.

PHILIP LEO MCHUGH

JOHN VINCENT MEAGHER

ARTHUR SOARES MEDEIROS

HENRY ALBERNAZ MICHAELS

IRVING JOHN MILLS

RAYMOND MITCHELL

EILEEN LOUISE BREEN MORAN



WALTER NELSON MORSE

GEORGE FRED MOSA

CHARLES RUSSELL MULCAHY

BRADFORD THOMAS MUNROE

MARY ELIZABETH MURPHY

LEONIDE VICTOR PICHE

WALTER CHARLES PILACIK

STEPHEN FREDERICK PIROG

CASIMIR THADDEUS PLICHTA

MAURICE LEON POISSON

STANLEY EDWARD POSNAK

STEPHEN RAMUT

WILLIAM LUTHER RATCLIFFE

GRACE GERTRUDE REED

MARGARET PATRICIA RILEY

JOSEPH NAJEEB RISHMANY

MATTHEW J. ROBERTS, JR.

ALBERT JOSEPH ROBINSON

THOMAS ROSE

HERBERT FENTON SELLERS

HILBERT VIEIRA SERODIO

ALBERT ELLSWORTH SHOVELTON

JOHN KENYON SIMPSON

VENTURA BERNARDO SOUZA, JR.

LILLIAN MARTHA THORNTON

LAURA ELLEN THRESHER

WILLIAM KENDALL TURNER

JAMES FRANCIS WALLS

JOHN WARD, JR.

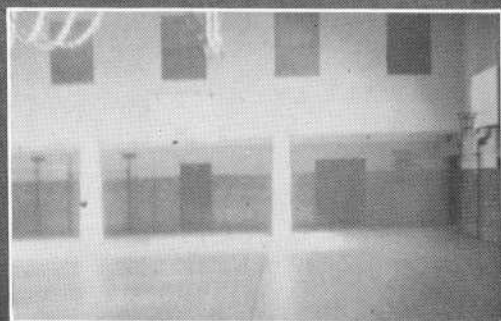
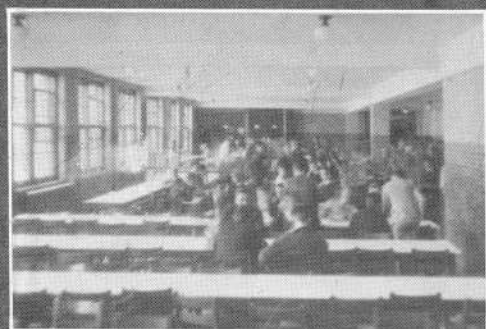
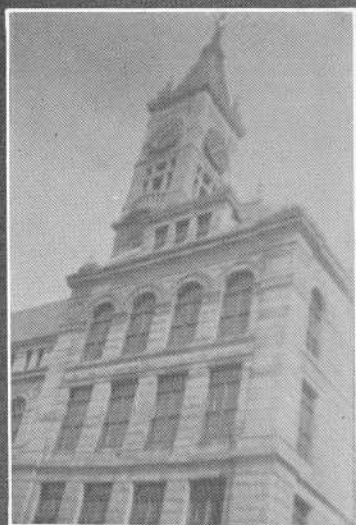
HARRY F. WHITE

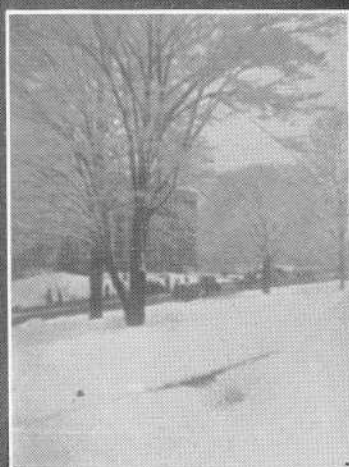
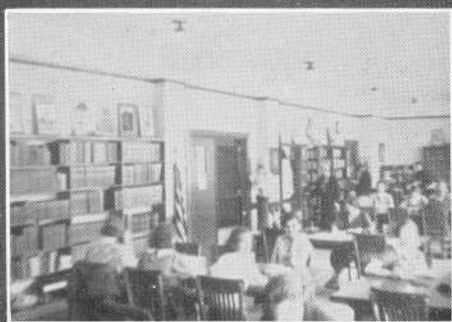
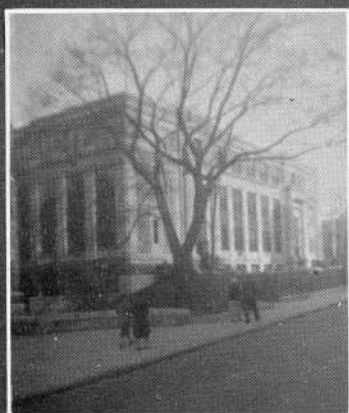
LAWRENCE THOMAS WHITTAKER

THOMAS WILDMAN

HOWARD EDWARD WILLISTON

ROBERT LEWIS WILLISTON







LOUIS DeBONis	<i>Most Popular</i>	DOROTHY RICHARDS
KENNETH HIGGINS	<i>Best Looking</i>	ELIZABETH M. SULLIVAN
JOHN McGUIRE	<i>Class Wit</i>	ELLEN COBERY
ALLAN DEXTER	<i>Most Attractive</i>	CAROLYN V. BAXTER
NORMAN PAQUIN	<i>Best Dancer</i>	HELEN COTTER
THOMAS W. HAMMOND	<i>Most Athletic</i>	RITA CALLAHAN
JAMES McGUIRE	<i>Class Flirt</i>	MARIE LEVESQUE
RAYMOND BROOKS	<i>Most Dignified</i>	ARDELL WILBUR
JEREMIAH McDONALD	<i>Best Sport</i>	MARY C. E. SULLIVAN
BERNARD H. ZASS	<i>Most Versatile</i>	ANITA CHAVENSON
THOMAS F. MONAGHAN, JR.	<i>Best Dressed</i>	JANICE EDMONDS
NORMAN P. SEAGRAVE	<i>Most Original</i>	EMMA CLEVERLEY
WILLIAM F. GOYETTE	<i>Most Interesting</i>	IRENE KERNES
WILLIAM PALMER	<i>Most Mischievous</i>	CAROLYN McCARTHY
ALDO DeBenedictis	<i>Most Brilliant</i>	LENORA GROZEN
ANDREW DANGELAS	<i>Most Talkative</i>	HILDA KATERSKY
FREDERICK C. LOUGH	<i>Most Likely To Succeed</i>	DOROTHY RICHARDS
JAMES Warburton, Jr.	<i>Most Highminded</i>	RUTH D. ALBRO
MAX PACKER	<i>Most Studious</i>	CLAIRE MURPHY
FREDERICK C. LOUGH	<i>Best Known</i>	RUTH HEYWOOD
BERNARD H. ZASS	<i>Best Speaker</i>	ELLEN COPPINGER



THE STUDENTS' ACTIVITIES ASSOCIATION

FRED QUINN	- - - - -	<i>President</i>
EDNA BARON	- - - - -	<i>Vice President</i>
BERNARD CHEBOT	- - - - -	<i>Secretary</i>
MISS ALICE G. LANGFORD	} - - - -	<i>Faculty Advisors</i>
MISS CARRIE T. FOULKES		

The Students' Activities Association, known by all as the S. A. A., has proven to be one of the most important of all extra-curricular organizations at Durfee. With over a thousand members, this organization has found itself able to extend its sphere of influence to include every branch of school life. This year the S. A. A. has successfully carried out several projects, which have all helped greatly to further the welfare of the school. These were the annual membership drive, a matinee social for each of the three upper classes, an officers' banquet, the eighth annual convention of the Associated Body of Student Councils of Massachusetts High Schools, an Honor Student Assembly, the awarding of Deltas, the recognition of the Library Aids and the Electrical Club, loans to the Dramatic Club and Chorus for the production of "Novelty Nite" and "H.M.S. Pinafore" respectively, and the establishment of a Conference Room, available to all committees.

Thus the Students' Activities Association has contributed immeasurably to the welfare of Durfee, and has become an extremely valuable part of the school.



THE DURFEE DRAMATIC CLUB

IRENE KERNESS	- - - - -	<i>President</i>
MAX PACKER	- - - - -	<i>Vice President</i>
MILDRED PANSY	- - - - -	<i>Secretary</i>
MARY HINCHEY	- - - - -	<i>Recorder</i>
BERTRAND ALLAIRE	- - - - -	<i>Call Boy</i>
MISS BARBARA WELLINGTON	- - -	<i>Faculty Advisor</i>

Up spoke the small gold mask of tragedy, inscribed with the letters D. D. C.:-

"Still another year has passed in which I have witnessed the many activities of the Durfee Dramatic Club. The four one-act plays, "Lonesome-Like," "A Pair of Lunatics," "Submerged," and "The Beau of Bath," have all helped to make an interesting year's program. Included also in the list of the club's doings was the excellent performance of "The Bishop's Candlesticks," which was entered in the state drama contest held at Emerson School of Oratory.

"The club's reunion, welcoming all past and present members to an evening of fun and gaiety, was a great success. The climax of the year's activities was "Novelty Nite," varying in subject from the delightful "Beer Garden" to the tragic "Where the Whirlwind Blows."

"And now, having reviewed a most enjoyable and successful season, I must bid you good-bye, hoping that these many months we have spent together may mean as much to you as they do to me."



THE COMMERCIAL CLUB

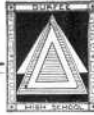
DORIS BOWDEN	- - - - -	<i>President</i>
PHOEBE BOARDMAN	- - - - -	<i>Vice President</i>
JESSICA KNOTT	- - - - -	<i>Secretary</i>
MARY KOZAN	- - - - -	<i>Treasurer</i>
MARGUERITE HAMEL	- - - - -	<i>Assistant Treasurer</i>
MR. WILLIAM J. CHISHOLM	- - - - -	<i>Faculty Advisor</i>

The members of the Commercial Club of the B. M. C. Durfee High School may look back upon the year 1932-33 as one of the most successful years in the club's history.

The Commercial Club, under the leadership of its president and the supervision of its faculty advisor, has brought the Commercial pupils closer together by sponsoring dances and parties, and by providing practical business lessons through different commercial lectures. This organization has contributed generously to several worthwhile school projects, such as the Health Club and the welfare of the students. Thus the Commercial Club has become well known for its good work, and through the cooperation of every member, is rapidly growing in strength and number.



↑
Paul Kruppin



THE DURFEE HILLTOP

Under the excellent guidance of the faculty advisor and the leadership of the editor, the Journalism class this year presented to the school one of the most successful publications of the Durfee Hilltop in the paper's history. The aim of the Hilltop was to be the means by which the student body might become acquainted with all school activities, and in this respect especially was the paper a success, covering, as it did, many exclusive news items that proved of interest to all readers of the weekly.

The paper's policy this year was to offer the latest news events possible written in a good journalistic style, and it followed this system throughout. In this respect the sports page was outstanding, presenting the various athletic contests written in a sports-like tone.

The appearance of the first page was greatly changed from the past, for this year the Hilltop followed the arrangement of metropolitan papers with a balanced make-up. Thus, while necessitating careful planning on the part of the editor, the appearance of the paper was greatly enhanced.

The editorials this year have been marked by good taste and judgment, and have shown deep thought and careful composition.

The humorous edition, *The New Squeal*, caused more comment than any other issue since the founding of the paper. It consisted of four pages of humor and two pages of news. This was the first time that a six-page paper had ever appeared at Durfee.

With untiring service and cooperation the staff and the faculty advisor this year have succeeded in publishing a newspaper which has held the interest of both the student body and the faculty of Durfee.

The staff consisted of Bernard H. Zass, editor-in-chief; Irene Kerness, associate editor, Ellen Cobery and Laurine MacDonald, assistants; Evelyn Ulanoff, news editor, Annah Kirker and Doris Paradis, assistants; Paul Griffin, sports editor, John Shea and Melvin Zass, assistants; Ellen Coppinger, literary editor, Helen Sharrocks, assistant; Rita Callahan, personals editor, Dorothy Hanley and Catherine Simmons, assistants; Lester Ball, joke editor, Raymond Sullivan, assistant; Kathleen Tobin, business manager, Thomas F. Monaghan, Jr. and Grace Nicol, assistants; Agnes Halpin, circulating manager, Ralph Castonguay and Sidney Levinson, assistants; Anita Chavenson and Rita Berube, artists; Gertrude Bugara and Doris Colwell, typists; and Miss Edna U. Delahanty, faculty advisor.



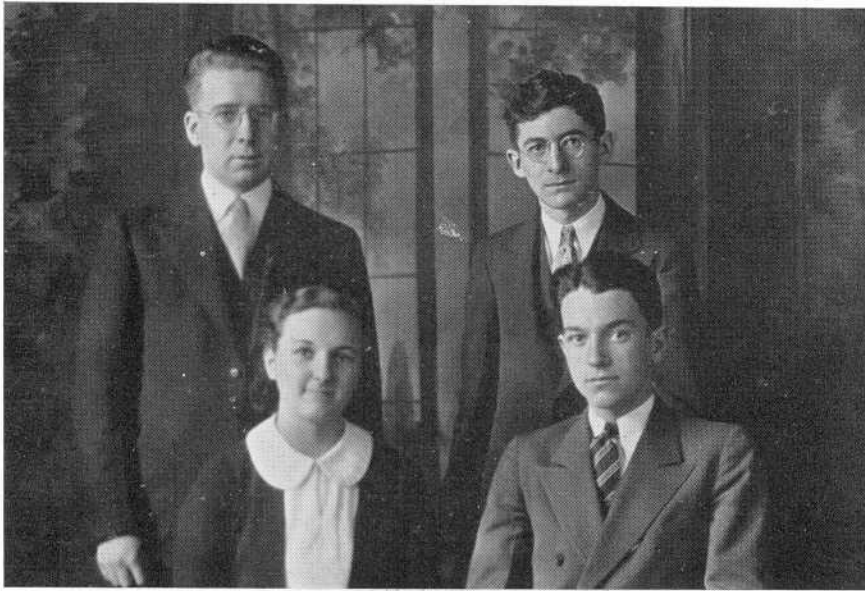
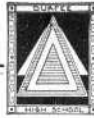


THE RECORD BOOK

In the spring of 1932, when the election of the officers of the Class of 1933 was held, Gerald H. Waring was chosen Editor-in-Chief of the Record Book, and Frances Brough as its Business Manager.

As usual with the production of a year book, little work was to be done until December. At that time a staff was appointed, consisting of Max Paeker, Lenora Grozen, Mildred Pansy, Irene Kerness, Mary Kozan, Marjorie L. Todd, Ruth D. Albro, Evelyn Steinberg, Lillian Bailey, Sarah Sludsky, Anita Chavenson, Evelyn Ulanoff, Rita Callahan, Norman P. Seagrave, Henry F. Shea, James A. Partridge, Richard A. Riley and Carolyn V. Baxter. Immediately after the Christmas vacation a meeting was called, at which time the editor distributed the various assignments. The reading matter and the pen and ink sketches in this book are mute evidence of the staff's labor over its assignments.

Due to the financial depression, the advertising this year fell off greatly. The Senior Dance for the benefit of the Record Book, held December 6, 1932, was not a success. Therefore it was necessary to publish the annual practically on subscription. This, however, did not prevent the editor from endeavoring to produce the best year book ever published at B. M. C. Durfee High School.

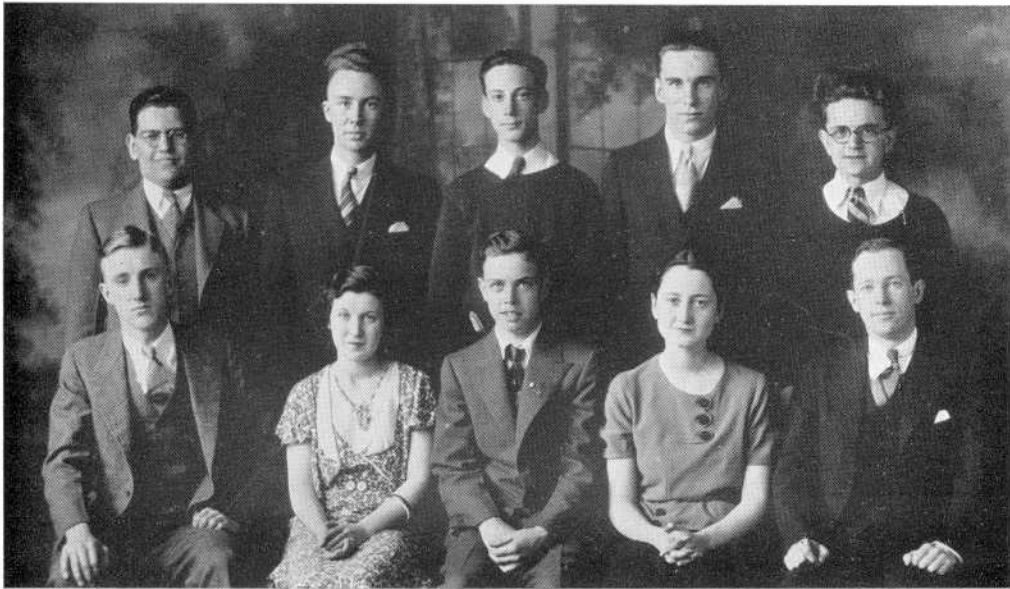


THE DURFEE FORUM

THOMAS F. MONAGHAN, JR.	- - - - -	<i>President</i>
LEO DONOVAN	- - - - -	<i>Vice President</i>
IRENE KERNESS	- - - - -	<i>Secretary</i>
PHILIP SACKNOFF	- - - - -	<i>Sergeant-at-Arms</i>
MR. JOHN T. CROWLEY	- - - - -	<i>Faculty Advisor</i>

The activities of the Forum during the past year have been varied. Interesting discussions have arisen concerning the Constitution and parliamentary procedure. Debates have been held on national, local and school subjects, some of which have resulted in lively arguments. The year was closed by a mock trial and the annual banquet.

This year the Forum was particularly fortunate in its selection of officers. Mr. Monaghan has filled the duties of the chair with befitting dignity and impartiality, while the other officers have performed the functions of their respective positions with that cheerfulness which is an integral part of the Forum. Throughout the year Mr. Crowley has devoted much time to the Forum. Although he has willingly rendered his advice when it was solicited, he has generously refused to "dictate" in any manner.



THE DEBATING TEAM

Under the patient guidance of Coach Ambrose F. Keeley, the debating team has completed a year which may be termed successful, even considering the occasional defeats. In every debate the team has shown careful preparation of material and a thorough knowledge of the question. These essential elements required intensive study. They involved heavy reading, compilation of facts, discussion, and practice debates. Although the preparation has been at times tedious, the squad has stayed on the job until it was completed. Mr. Keeley also has devoted much time and effort to make the debates successful, and he deserves much credit for his unselfish service.

This year's squad was composed of Captain Ellen C. Coppinger, Claire Murphy, Dwight S. Waring, Jr., Abraham Tulchin, Norman P. Seagrave, Jack Brian, Alan Manning, James Hanify, Henry Ustrobinsky and John Harrington.

SCHEDULE

Durfee 1	New Bedford High	2
Durfee 2	New Bedford Vocational	1
Durfee 1	Brockton	2
Durfee 3	Providence Central	0





THE LIBRARY AIDS

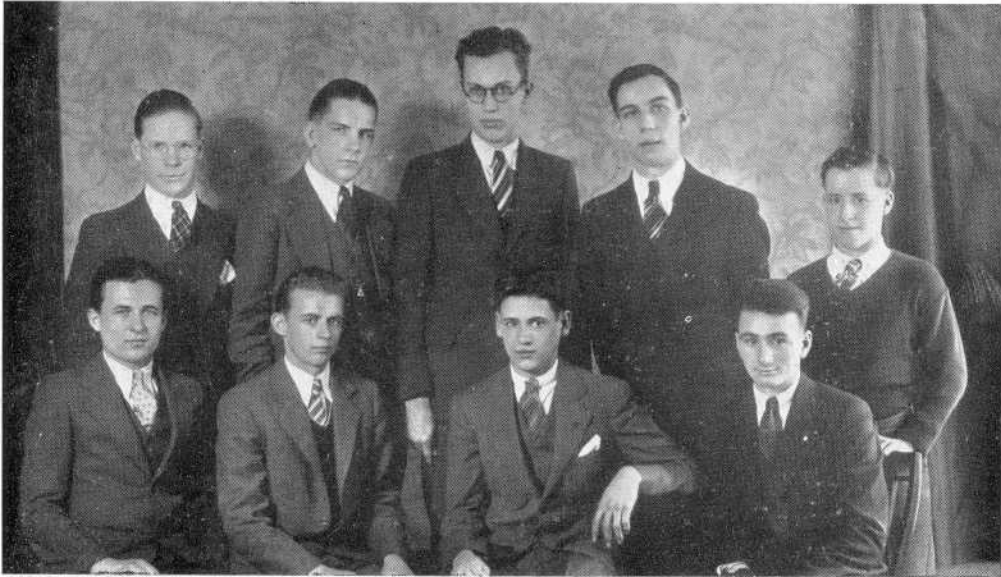
JAMES B. COYLE	- - - - -	<i>President</i>
JAMES HANIFY	- - - - -	<i>Vice President</i>
IRENE KERNESS	- - - - -	<i>Secretary</i>
MALCOLM DEARDON	- - - - -	<i>Treasurer</i>
MISS MARION E. KERNAN	- - - - -	<i>Faculty Advisor</i>

The Durfee Library Aids is a group of students who have been selected from the three upper classes for their scholastic standing. The officers of this organization are chosen annually by Miss Kernan, with the help and assistance of a committee of teachers.

The duties of the aids are to distribute library passes in the morning, to collect and take the passes to the study halls each period, to locate pupils absent from the library, to keep the books arranged in an orderly way upon the shelves according to the Dewey Decimal System, to assist the students in finding material, to prepare new books for the shelves, and, in general, to keep the library in order.

Each year the Library Aids sponsor a bridge and whist party in order to raise money to buy new books. This year's bridge and whist, held in November, was both a social and financial success, and consequently many new books have been added to the library.

The library aids, whom Miss Kernan has found almost indispensable in her work, are: Irene Kerness, James Hanify, James B. Coyle, Malcolm Deardon, Edna Baron, David Sternsher, Virginia Kerrigan, Edna Nowell, Nada Lukashevich, Margaret Dugan, Eleanor Eddy, Eunice Chapelle, Lois Barton, Melvina Almond, Philip Sacknoff, Lenora Grozen, Edward D. Harvey, Raymond Brooks, Nancy B. Ellis, Moira Kispert, Dorothy Wolstenholme, Frederick C. Lough, John Shea, Arthur Sullivan, Frank Sandler, Robert Marr, Margaret Cook, Priscilla S. Damon and James Warburton, Jr.



THE TRAFFIC SQUAD

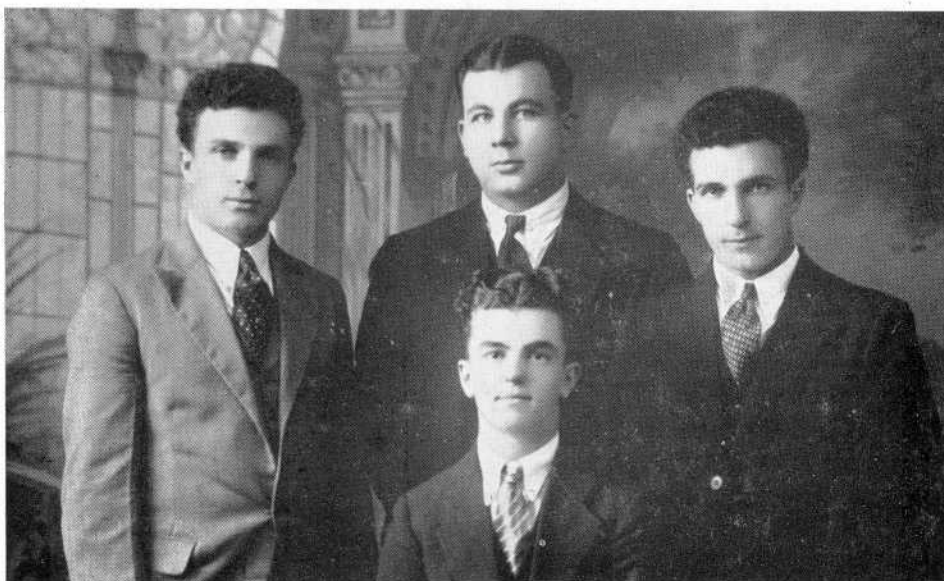
ALFRED M. PIMENTAL - - - - - Captain
 CHARLES F. ADAMS - - - - - Student Advisor
 MISS E. ESTELLE MILES - - - - - Faculty Advisor

Under the direction of the captain, aided by the faculty and student advisors, the B. M. C. Durfee High School Traffic Squad brought to a successful conclusion its third active year since the new Tech was opened in 1930.

The year saw several changes in the rules and regulations governing the passing of traffic. Chief among the innovations was the One Way System, whereby all students were compelled to use specified corridors, stairways, and doors when passing from class to class.

Last winter the squad was enlarged to provide officers for policing the Durfee building, as well as Tech. Besides their regular duties of keeping order and preventing congestion in the corridors, the traffic officers serve as guides for visitors, and last fall acted as ushers at football games.

The members of Captain Pimental's staff are Louis Fiore, John D'Adamo and Lynwood French, first lieutenants; and George Desrosiers, Roger Berube, James Thorpe and F. Brayton Adams, second lieutenants.



THE DURFEE VARSITY CLUB

WILLIAM F. GOYETTE	- - - - -	<i>President</i>
JOHN BRITTO	- - - - -	<i>Vice President</i>
MANUEL BRITTO	- - - - -	<i>Secretary-Treasurer</i>
MR. STEPHEN NAWROCKI	- - - - -	<i>Faculty Advisor</i>

The Durfee Varsity Club, composed wholly of Durfee lettermen, is a new organization, the aim of which is "to create and perpetuate interest in competitive athletics and to encourage school spirit by high ideals of sportsmanship."

Together with the Sports Committee, the club last fall published two football pamphlets, "Punts and Passes," for sale at the Taunton game, and "Drop Kicks," which made its appearance on Thanksgiving Day. In November the club sponsored a Victory Dance in honor of the football team. It also held an athletic exhibition in the gym to demonstrate the prowess of its members. The proceeds of both these affairs were used for a banquet for all of Durfee's athletes.

Early this spring the Varsity Club purchased several books on athletics and presented them to the school library. They consist of manuals, both for coach and for player, and works of fiction on all sports.





THE DURFEE ORCHESTRAL CLUB

LYDIA HINCKLEY - - - - - *Concert Master*
 SIDNEY LEVINSON - - - - - *Business Manager*
 MISS HELEN L. LADD - - - *Instructor and Director*

The Durfee Orchestral Club kept this year its position as one of the most useful and beneficial associations of the school. With Lydia Hinckley as concert master and Sidney Levinson as manager, and under the leadership of Miss Ladd, the club most successfully played on various occasions.

In December it provided the music for the Dramatic Club's presentation of four one-act plays. In February the orchestra accompanied the operetta "H. M. S. Pinafore," presented by the Chorus. Later in the same month, February 18, to be exact, it played for the eighth annual convention of the Associated Body of Student Councils of Massachusetts High Schools, held in the Tech auditorium.

The Orchestral Club journeyed to Emerson School of Oratory at Boston to supply music for the state drama contest, in which the Dramatic Club had entered a play. On May 18 came the principal event in the club's program, the joint Orchestral Club and Chorus concert. As usual, the orchestra furnished excellent music for the Class Day and Graduation exercises.

Not only has the club aided other organizations, but it has greatly benefited its own members, with the invaluable ensemble practice it supplied in the constant practice required.

The Orchestral Club is of major importance to other clubs, to its own members, and to the entire school. The Class of '33 appreciates the fine work and the untiring effort of Miss Ladd and her musicians.





THE DURFEE CHORUS

JEANNE SHAPIRO - - - - - *President*
 CLAIRE HARRINGTON)
 RODERICK MARCHESSAULT } - - - - - *Treasurers*
 MISS HELEN L. LADD - - - *Instructor and Director*

During the past year the Durfee Chorus has been more active than ever before. Under the excellent leadership of Miss Helen L. Ladd, Supervisor of Music in the Fall River public schools, the Chorus entrenched itself even more deeply in the extra-curricular life of Durfee students. The training in voice and choral practice this organization offers was greatly appreciated by the music-loving students of the school.

To fill the officers' positions, the club elected Jeanne Shapiro as president, and Claire Harrington and Roderick Marchessault as treasurers. Thus equipped the club fulfilled its program for the year.

Just before the Christmas vacation, in keeping with the yearly custom, the gray-robed members of the Chorus, candles in hand, walked through the corridors of both buildings singing Christmas carols. The Orchestral Club supplied the accompanying music.

The highlight of the year was the operetta, Gilbert and Sullivan's "H. M. S. Pinafore," which was presented to an appreciative audience on February 17. The leading parts were played by Claire Harrington, John E. Watkinson, Joseph Camara, Paul Marchessault, Florence Popkin, Vernon Heywood, Samuel Blinn and Emma Larrivee. The Orchestral Club played in accompaniment. Both the operetta and the orchestra were under the direction of Miss Ladd, who, in the production of the former, was assisted by Miss Barbara Wellington, dramatic coach.

At the annual concert given in conjunction with the Orchestral Club on May 18, the Chorus's group of numbers was most warmly received. Rounding out the year, the Chorus furnished the musical program on Founder's Day.

The Chorus may well be proud of its record during the year 1932-33, for during that period it has greatly furthered the interest in vocal music at B. M. C. Durfee High School.



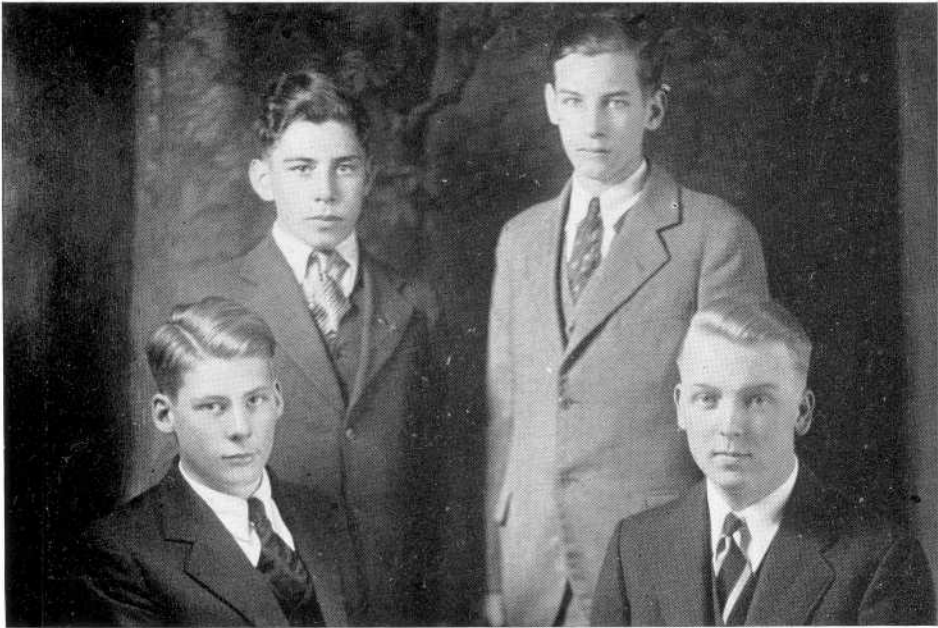
THE DURFEE BAND

RICHARD H. FISH, JR.	- - - - -	<i>Student Conductor</i>
SIDNEY LEVINSON	- - - - -	<i>Business Manager</i>
MR. WILLIAM ALLINSON	- - -	<i>Instructor and Director</i>

The B. M. C. Durfee High School Military Band this year has come to the forefront among the musical organizations at Durfee. Owing to the splendid cooperation of its members and the superb leadership of its director, the band has progressed rapidly, and through constant practice, has become one of the best high school bands in the state.

The band played at all football games last fall. Between the halves at the New Bedford game, on Thanksgiving Day, it went through several maneuvers on the gridiron, forming a large "NB" and "D".

Besides appearing at athletic contests, the band performed at rallies, at sophomore assemblies, at the Capitol Theatre, and at many other functions. The public concert held April 27, although not as successful financially as could be desired, was really a very excellent performance. The soloists especially were good, playing their instruments with fine technique and finesse.



THE ELECTRICAL CLUB

HENRY BRADBURY	- - - - -	<i>President</i>
RAYMOND BOLDUC	- - - - -	<i>Vice President</i>
ROBERT GUNNING	- - - - -	<i>Secretary</i>
EDMUND FEATHERSTONE	- - - - -	<i>Treasurer</i>
MR. MYRON T. ASHLEY	} - - - -	<i>Faculty Advisors</i>
MR. HENRY J. SHEA		

The purpose of the Durfee Electrical Club is to create greater interest in things electrical, to promote cooperation between electrical students and professional electrical men, and to take up electrical work not possible in class.

During the year 1932-1933 regular meetings were held every other week, while the members filled in the intervening time with radio work. As a group the club visited the radio transmitter of station WSAR and the Fire Signal Building on Pine Street, where the workings of the various electrical machines were explained to them.

Among the several professional electrical men who spoke to the members of the club were Mr. Fantom, Inspector of Wires in Fall River, whose subject was "The Electrical Code and Its Applications," and Mr. Hardsog, power engineer of the Fall River Electric Light Company, who spoke on "Illumination" and "Radio Transmitting." The General Electric Company provided slides and a lecture on "Vacuum Tubes—Their Construction and Operation."



THE DURFEE DESIGN GUILD

KATHRYN V. KIENCKE	- - - - -	<i>President</i>
RUTH BURDETT	- - - - -	<i>Vice President</i>
JENNIE MARKS	- - - - -	<i>Secretary</i>
DOROTHY M. SKIFF	- - - - -	<i>Treasurer</i>
MISS F. ANTOINETTE PRATT	- - - - -	<i>Faculty Advisor</i>

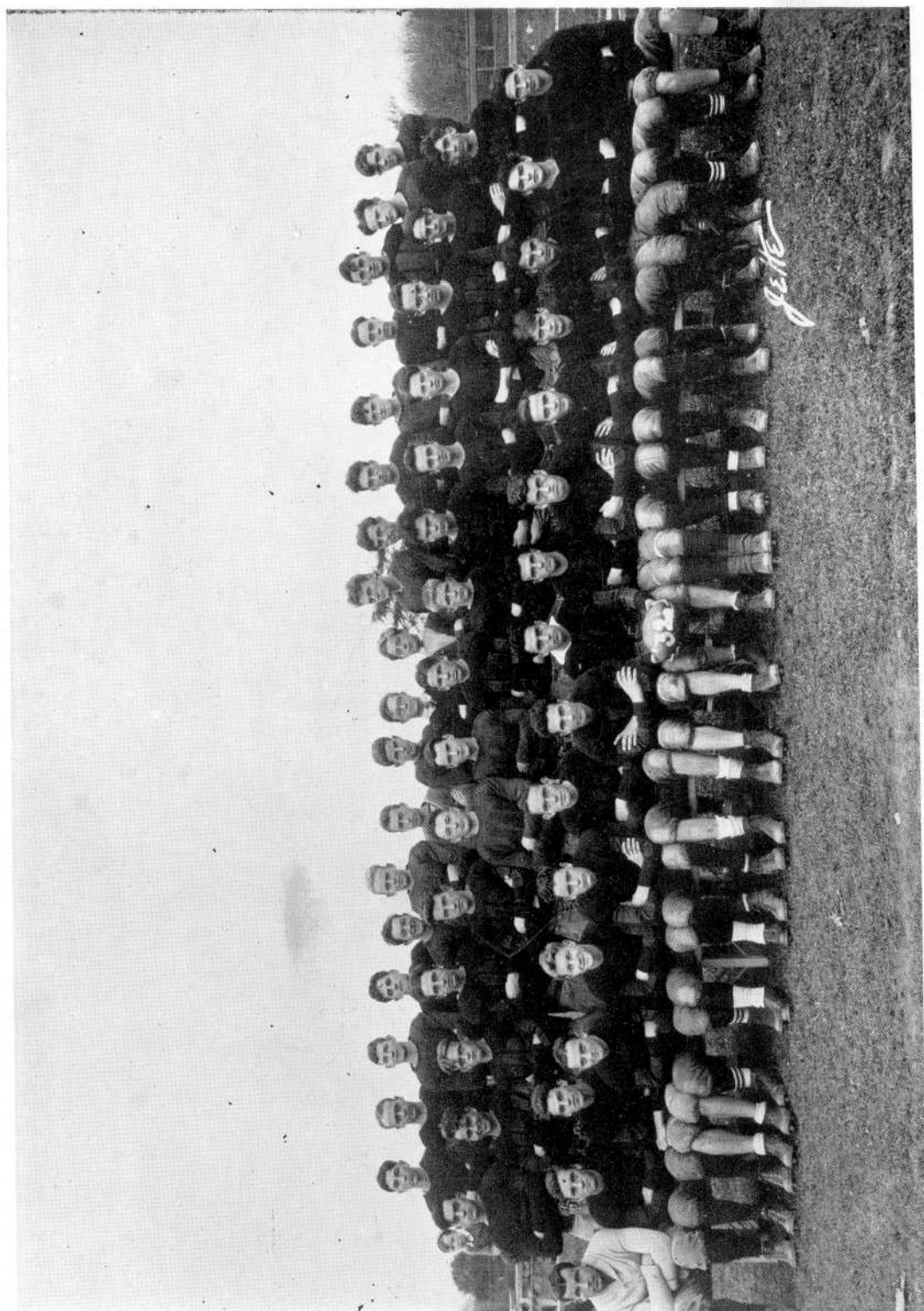
The chief aim of the Durfee Design Guild is to render service of an artistic nature to the B. M. C. Durfee High School. Although a new organization, it is one that already plays an important part in the extra-curricular life of the school.

Throughout the year the members of the club have done some excellent art work, providing posters for Book Week, for Dramatic Club plays, for movies shown last fall, for the operetta "H. M. S. Pinafore," and for other school activities. The best of the club's posters were entered in art exhibitions here and at Boston. The club itself has given three exhibitions of its work in the school library, and one at McWhirr's store. Miss Kiencke was lately the recipient of a bronze medal from the S. P. C. A. for her fine poster on kindness to animals.

The Guild brought its year's work to a climax with the production of the musical revue "Stardust." The show was twice presented, and was twice a great success. The proceeds were used to purchase much-needed art supplies for club work.



SPORTS





FOOTBALL

In decided contrast with the record of the preceeding year, Durfee experienced a very successful football season in 1932, winning eight of the nine scheduled games. For the first time in eleven years a Durfee team downed Fairhaven, score 25-13. The following week the Red and Black whitewashed New Bedford Vocational, 12-0. All of the first eight games were won by comfortable margins, and hopes were high at Durfee for an undefeated season. But on Thanksgiving Day New Bedford High had the honor, and the undoubted trouble, of being the only school to defeat Durfee. The score was 6-0.

After the football season had officially ended, Durfee, New Bedford Vocational and Taunton High received invitations from New Bedford High to participate in a "Round Robin," to be held at Sargent Field, New Bedford. All accepted, and in the first round New Bedford eliminated Durfee, 6-0, while Taunton defeated Vocational, 6-0. Then, in the final round, Taunton staged the upset of the day when the Orange and Black defeated the hitherto unbeaten New Bedford team, 6-0, so winning the tournament.

The review of the 1932 season cannot properly be written without giving the Durfee players all the credit and praise possible for their fine playing and for their splendid sportsmanship, both in victory and in defeat. Five Durfee men: the "Italian Wall"—Captain Louie DeBonis, center, and Manny and Johnny Britto, guards—Charlie Sutcliffe, fullback, and Mickey Bor, quarterback, won positions on the All Bristol County Football Team. Other first string men, who also played excellent ball throughout the season, are the tackles, Eddie Babka and Andy Wilcox, the ends, Matt Kuss and Hank Harrington, and the three backs, Tommy Hammond, Joe Dumais, and Armand Chabot.

SCHEDULE

Durfee 13	West Warwick	0	at Fall River
Durfee 15	Attleboro	6	at Fall River
Durfee 30	Falmouth	7	at Fall River
Durfee 25	Fairhaven	13	at Fairhaven
Durfee 12	N. B. Vocational	0	at New Bedford
Durfee 20	North Attleboro	0	at Fall River
Durfee 19	Taunton	6	at Fall River
Durfee 28	Somerset	0	at Fall River
Durfee 0	New Bedford	6	at Fall River

Durfee	162
Opponents	38



BASKETBALL

The 1932-1933 Durfee High basketball team, under the guidance of Coach Nawrocki, won ten of its sixteen games, for a seasonal average of .625.

The Hilltoppers played very inconsistent basketball, showing great strength on some occasions, and giving very mediocre exhibitions on others. The ineligibility of Captain Tom Hammond because of his age early in the season was a severe blow to the team, for Hammond was a tower of strength both in the offense and defense.

The outstanding members of the squad were Acting Captain Butch Sutcliffe, forward and Myler Freedman, guard. However, all the other players, Carl Dubitsky, Red Fitzgerald, Stan Mis, Hank Harrington, Bill Desmond, Ed Steininger, Ernie Hodgson and Mickey Bor, captain-elect for the 1933-34 season, deserve much credit for their fine work.

The schedule and scores are as follows: Durfee 91—Barrington High 18; Alumni 35—Durfee 30; Durfee 48—West Warwick 15; Durfee 45—North Attleboro 18; Durfee 23—North Attleboro 15; Durfee 25—Taunton 18; New Bedford Vocational 31—Durfee 17; Attleboro 35—Durfee 21; New Bedford 25—Durfee 23; Durfee 22—Attleboro 19; Durfee 35—Fairhaven 20; Durfee 43—New Bedford Vocational 26; Durfee 33—Taunton 19; New Bedford 26—Durfee 13; Fairhaven 39—Durfee 33; Durfee 36—Holy Family 23. Durfee scored 488 points against 382 scored by her opponents.



TRACK

Durfee High opened its 1933 track season with bright prospects for a championship team. There was an abundant supply of veteran material, which Coach Andrew L. Duffy used to the best advantage.

In the 100 yard dash Durfee was represented by Captain Bill Goyette, Mickey Bor, Alex Stevenson and King Grinnell. In the 220 the outstanding runners were Red Toolin, Goyette and Bor. Vic Souza, who placed first in the 440 and 880 in the New Bedford meet, and Kermit Martin proved to be Durfee's mainstays in the quarter mile. Souza was outstanding in the half mile run. Oscar Waring and Armand Chabot, underclassmen, also made good showings. The relay team was composed of Goyette, Martin, Toolin, Stevenson and Bor, only four of whom were used in the same meet.

Durfee was even stronger in the field events than on the cinder path. In the shot put Andy Wilcox, Matty Kuss, and Manny and Johnny Britto represented Durfee. Carl Dubitsky starred in hurling the discus, in which event Wilcox, Kuss and the Britto twins also showed up well. Johnny and Manny Britto were outstanding in the javelin throw, with Russ Reed a close third.

Topping the bar at 5 feet 3 inches for the high jump, Charlie Gregory placed first in the New Bedford meet. Frank Drohan, Tom Burrell and Conroy tied at 5 feet 2, and Joe Mayall also jumped well. In the broad jump Vernon Heywood made an excellent showing, leading his team-mates Stevenson and Mayall. Linus Mullaly, Russ Reed, Joe Buffington and Art Cartier were Durfee's hope in the pole vault.

At the time of our going to press two meets had taken place, the Interclass and the New Bedford meet. The first was won by the Seniors, who piled up a total of 88 points in comparison with the Juniors' 13 and the Sophs' 17. In the New Bedford meet Durfee was trailing until the high jump, which she took, 8-1. In the broad jump Durfee scored 9 points and New Bedford, 0. The final score was Durfee 49, New Bedford 46.

The rest of the schedule follows:

Durfee	N. B. Vocational
Durfee	Durfee Alumni

COUNTY MEET

Durfee	New Bedford	N. B. Vocational
--------	-------------	------------------





BASEBALL

The call for candidates for the 1933 baseball team was issued March 27 by Coach Leslie W. Orcutt. About one hundred enthusiastic followers of the national sport reported for practice at Alumni Field. Due to the lack of veterans a fine chance to win a letter was offered to every promising candidate.

When the squad was finally picked the coach found himself with an inexperienced team to carry the Red and Black of Durfee on to victory. The only returning veterans were Captain Phil Dumas, Butch Sutcliffe, Louie DeBonis, Ernie Hodgson, Mickey Bor, Bill Palmer and Fred Lough. The greatest weakness of the team seemed to be in the pitching staff. Although there were several who sometimes could turn in very creditable performances, there was not one really dependable pitcher on the team.

At the New Bedford game played at Alumni Field May 13 the Senior Class gift, a new steel wire backstop, was formally presented to the school by Fred Lough, president of the graduating class. All seniors were invited to attend this game free of charge that they might witness the presentation of their class gift. It was then that the team expressed its gratitude by winning for the first time, 18-6.

The schedule and results up to the date of our going to press were:

Durfee 11	East Providence	13	at Fall River
*Durfee 9	Holy Family	7	at Fall River
Durfee 11	New Bedford	12	at New Bedford
Durfee 4	Fairhaven	5	at Fairhaven
Durfee 5	N. B. Vocational	6	at New Bedford
Durfee 3	Brockton	5	at Brockton
Durfee 18	New Bedford	6	at Fall River
Durfee 0	Fairhaven	5	at Fall River
Durfee 4	Brockton	23	at Fall River
Durfee 8	N. B. Vocational	17	at Fall River
Durfee 4	Holy Family	3	at New Bedford
Durfee	Providence Central		at Fall River
Durfee	Taunton		at Taunton
Durfee	Taunton		at Fall River

* Called in fifth inning because of rain.



TENNIS

Owing to the graduation of all but one of the members of last year's championship tennis team, it was necessary this year to build up a team composed almost entirely of new and untried material.

A good estimate of the various possible candidates, their style and their ability, was obtained through the medium of the tennis tournament conducted last fall, so that when Coach Ambrose F. Keeley issued the call for candidates about the middle of April, he was able to make much more progress in whipping the squad into shape than ordinarily would have been the case.

Captain Fred Quinn, city junior singles champion and the only returning letterman, acted both in the capacity of captain and manager. He was number one man, while the rest of the singles squad was composed of Myler Freedman, Izzy Schwartz, Vic Souza, Hortie Bowen and Gil Silver, in that order. The doubles team consisted of Quinn and Freedman, and Souza and Schwartz.

Up to the time of our going to press the team had experienced little difficulty, winning the first five matches, and indications were that it would equal the excellent record established by the squad of 1932, claimant of the Massachusetts High School Tennis Championship.

SCHEDULE

Durfee	4	De La Salle	3
Durfee	3	Attleboro	2
Durfee	3	Taunton	1
Durfee	3	Fairhaven	2
Durfee	5	N. B. Vocational	0
*Durfee		De La Salle	
Durfee		Portsmouth Priory	
Durfee		New Bedford	
*Durfee		Taunton	
*Durfee		Attleboro	
Durfee		Prov. Classical	
*Durfee		Fairhaven	

* Home matches.



GOLF

This year, for the first time in her history, Durfee was represented in the field of sport by a varsity golf team. Under the direction of Coach Charles D. Smith, the first practice session was held about the middle of April at the Montaup Country Club. By means of an elimination tournament the coach chose the members of the squad from among the twenty-odd candidates who reported.

The team was under the leadership of Charles Lenaghan and Charles Ryan, co-captains, and the direction of Clifford Robinson, manager. Besides the captains, the squad was composed of Leonard Mullen, Everett Makin, James Flynn, and the substitutes Kenneth Cushman and Charles Taylor. An arrangement was made whereby the low man of the two captains in one match led the team in the next.

The team played all of its home matches at the Montaup Country Club, which course, through the generosity of the officials, Durfee was permitted to use one afternoon per week for practice.

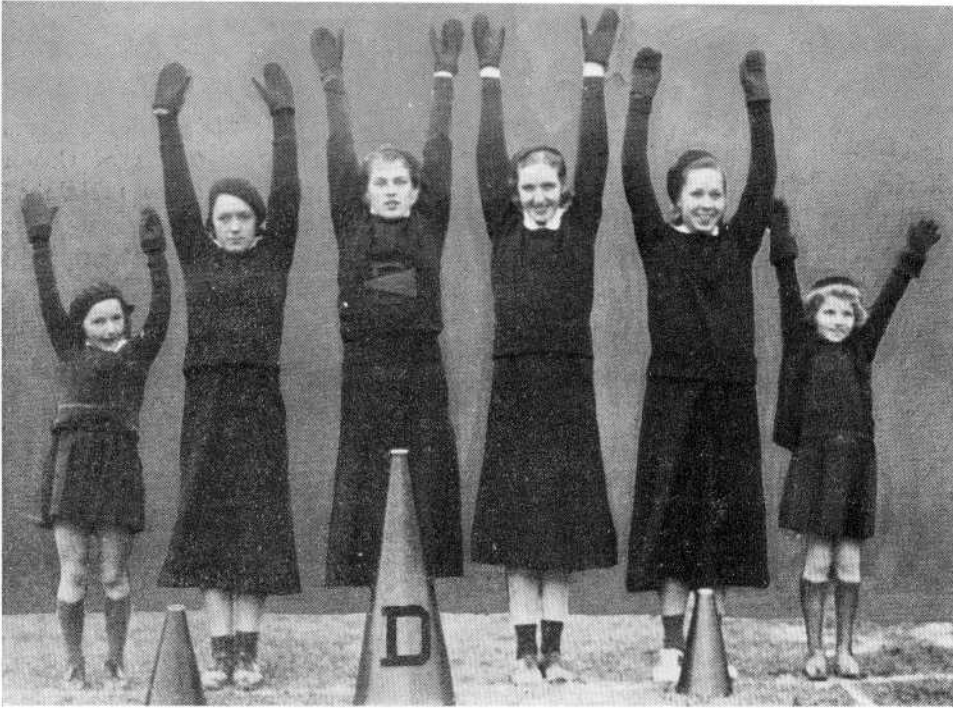
The golf team opened its season by playing Fairhaven, April 27. The schedule, as arranged by Manager Robinson and Coach Smith, and the results up to the time of our going to press, follow:

Durfee	4	Fairhaven	3
*Durfee	1	Brockton	8
*Durfee	6½	Fairhaven	2½
Durfee	1	Portsmouth Priory	3
*Durfee	1	Portsmouth Priory	8
Durfee	4	Taunton	5
Durfee	5½	New Bedford	3½
Durfee	½	Brockton	5½
*Durfee	6	Dartmouth	1
*Durfee		Taunton	
Durfee		Dartmouth	
*Durfee		West Hartford	
Durfee		Peck High	
*Durfee		New Bedford	

Replay of first game, forfeited because of ineligible player on Durfee team.

Durfee	Fairhaven
--------	-----------

* Home games.



THE CHEER LEADERS

The cheering team has just completed another active year, led by Captain Elinor McCarthy, '33. Miss McCarthy's assistants were Virginia Slinn, '33, Mary Conway, '34, Virginia Forrest, '34, and the mascots, Dolly McCarthy, '41, and Audrey Forrest, '41.

During the past school year the cheer leaders have been actively engaged in helping the Durfee athletic teams to victory. They have been present at all home games, and at as many outside contests as possible. The cheering team also played an important part in all the school rallies and assemblies held to stir up enthusiasm. In addition to their regular duties, last fall the cheer leaders led the band in its program at the dedication of the new bleachers during the Taunton game, and in its maneuvers upon the football field on Thanksgiving Day.



HUMOR

THE GREATER SPORT OF DURFEE

1. In Ancient History—Following Pheidippides' famous Marathon in a taxi.
2. Mr. J. Carroll's visits to the Empire on rainy days.
3. Passing notes by airmail in study.
4. Dressing Sophocles of Durfee study hall in modern attire.
5. Playing Dodge'em with Mr. J. Carroll at lunch periods.
6. Tickling the ivories in Room 511.
7. Borrowing money and forgetting the creditors.
8. Tracing the course of the dictionary during study period.
9. Carrying report cards around for marks.
10. Walks to the office after receiving a special invitation.

* * * * *

PICTURES OF THE PAST YEAR

1. Mr. J. Carroll chasing marbles across study hall.
2. Mr. Williston's walks after preparing chlorine.
3. Alexander Jacob's famous pronunciations in Ancient History.
4. Mickey Mouse's visits to study hall.
5. Miss Robbins dramatizing Mrs. Malaprop.
6. Experiment day in Mr. Orcutt's class.
7. Mr. Duffy's famous lectures to fifth period study hall boys.
8. Traffic confusion after installment of new traffic routes.

* * * * *

THE NEEDS OF DURFEE SINCE THE DEPRESSION

1. Taxicabs between Tech and Durfee.
2. Alarm clocks for tardy students.
3. Free lunches for the unemployed at Durfee.
4. Bigger and better detention room.
5. Pair of roller skates for Miss Miles to aid the traffic squad.

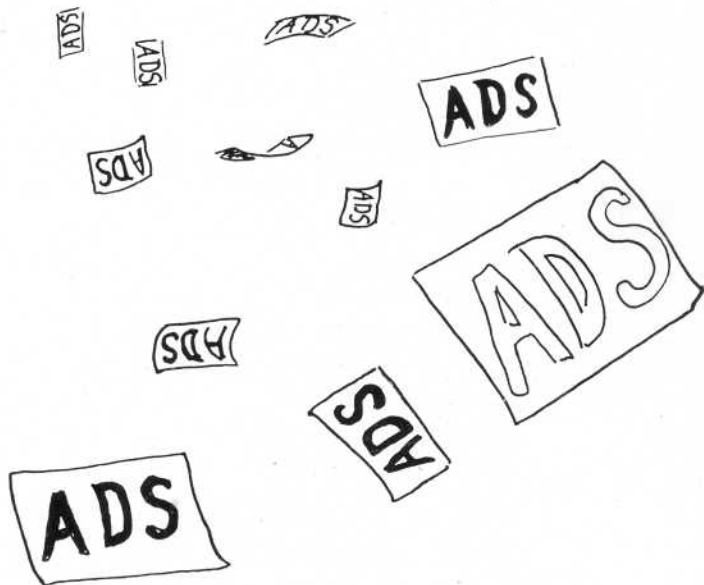
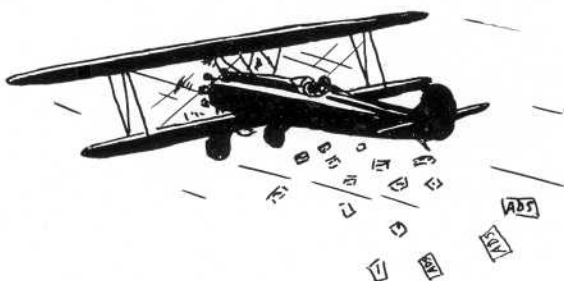
* * * * *

SCRAPS FROM SOME SONGS

1. The Huntsman—Pictures for Poem Notebooks.
2. Sweet Days Farewell—Class Day.
3. National Game—Homework.
4. That wasn't meant for me—Flunk slip.
5. Brother can you spare a dime—In Cafeteria.
6. Three on a Match—Class Day, Graduation, and the Prom.
7. Everyone knows I love you—Vacation.
8. I can't believe it's true—Getting a diploma.

Index

Advertisements	129-132
Autographs	93
Band	114
Baseball	122-123
Basketball	120
Cheer Leaders	126
Chorus	112-113
Class Officers	12
Class Portraits and Names	14-92
Commercial Club	99
Debating Team	105
Dedication	6-7
Design Guild	116
Dramatic Club	98
Durfee Alma Mater	3
Electrical Club	115
Faculty	8
Football	118-119
Forum	104
Golf	125
Hall of Fame	13
Hilltop	100-101
Humor	127
Index	128
Library Aids	106-107
Orchestral Club	110-111
Record Book Officers	11
Record Book Staff	102-103
Sketch of Durfee	2
Students' Activities Association	97
Tennis	124
Track	121
Traffic Squad	108
Varsity Club	109
Who's Who	96



JOHN P. NOWELL, JR.

MILL STOCKS

INVESTMENT SECURITIES

Archer Building 38 Rock St.

GRADE A MILK—CREAM

Plain and Chocolate Milk
Sold In Tech Cafeteria

—from—

CHAREST & SON
DAIRY

Office—564 King Philip St.
Dairy—529 Birch St.

TELEPHONE 500

All Milk Federal Tested Under
Laboratory Supervision

After Graduation

WHY NOT make recreation your vacation? Enjoy your work and give pleasure to others; be healthy and happy and teach others to be the same. Such is the life of a teacher of physical education.

SAVAGE SCHOOL FOR PHYSICAL EDUCATION

Established 1890

A Teacher Training School which prepares men and women to become teachers, directors, and supervisors of health and physical education in schools, colleges, playgrounds, clubs, private institutions and industrial organizations.

The curriculum of the three-year course includes practical instruction in all forms of athletics, gymnastics, games, dancing, swimming, dramatics, and the like; also the essential courses in education, psychology, anatomy, physiology, hygiene and others, thoroughly covering the theory and practice of health and physical education.

An Exceptionally Strong Faculty
Catalogue Upon Request

Register Now For
Class Entering September 18, 1933

SAVAGE SCHOOL

308 West 59th St., New York City

CONFIDENCE is the basis of every purchase you make in a jewelry store. Unless you are an expert, you must depend upon the advice and recommendations of the jeweler from whom you buy.

In these days of false bargains and cut prices on merchandise of unknown value, we remind you that this is a reputable establishment, conducted by a **professional** jeweler.

WONSON, Inc.

Jewelers

154 South Main Street

Compliments of

Carl Terry

ELECTRIC COOKERY
Is COOL—CLEAN—ECONOMICAL

Buy Your Electric Range
At Today's Low Price

Fall River
Electric Light Company

Part of New England Power Association

Compliments of

Thomas D. Morin

JEWELER

332 Stafford Road Tel. 6260

J. P. Dion

HUDSON AND ESSEX CARS
SALES AND SERVICE

Tel. 223-224 804 Pleasant St.

Jette Studio

PHOTOGRAPHERS

303 So. Main St. Tel. 6184

W. Harry Monks

REAL ESTATE AND INSURANCE

301 Granite Block Tel. 5899

Compliments of

Dr. Earle E. Hussey

Compliments of

CONGRESSMAN

Joseph W. Martin, Jr.

FOR SIXTY-FIVE YEARS

The Choice of Students With
Verve and Imagination

Bachrach

56 North Main St. Tel. 4703

Compliments of

Gay's Art Galleries

Compliments of

Robeson Pharmacy

Roch Lavault, Reg. Phar.
1132 Robeson St. Fall River

Best Wishes from

SPEEDWELL FARMS ICE CREAM

Lyndonville Creamery
Association

Rear 141 Rock St. Tel. 3773

Compliments of

The
FIDAMIES CLUB

Compliments of

The
VIVE SOCIETY

HIGH SCHOOL NEWS
IS FEATURED IN

THE
Herald News

Fall River's Home Newspaper

THIS DUFEE RECORD

PRINTED BY

C. J. LEARY & SONS, Inc.

HUDNER BUILDING
FALL RIVER, MASSACHUSETTS

