

# RECORD BOOK



**B. M. C. DURFEE HIGH**

FALL RIVER, MASSACHUSETTS



Miss Alice C. Harrington, Associate Dean of Girls

Mr. Thomas J. Cullen, Assistant Director of Vocational Guidance

Miss Yolande B. Laliberte, Associate Dean of Girls.

**T**O our Guidance Directors, Miss Yolande B. Laliberte, Miss Alice C. Harrington and Mr. Thomas C. Cullen, in gratitude for their unfailing interest and wise counsel, we, the Class of 1957, dedicate our Record Book.

Their thoughtful understanding and sound judgment have guided us throughout our years at Durfee, and in their untiring zeal on our behalf they have been of inestimable value to us. It is with sincere admiration and profound esteem we pay this, our parting tribute.

### **Members of the Graduating Class:**

May I offer my congratulations to you as you graduate from your high school, and may I add my very best wishes for the successful fulfillment of those ambitions with which you look forward to the years ahead.

One needs only to read the newspapers to realize how fortunate you are to have been educated in an American community dedicated to the ideals of equal opportunity for all. While all of you may not have taken full advantage to date of that opportunity, you have at least to the extent of fulfilling the requirements for graduation. You are entering a new phase of life where wider and deeper responsibilities become yours. To varying degrees you will meet them. We, your teachers and elders, sincerely hope that you will meet them to the best of your ability, for we know that only in this way will you achieve the fullness of life which is the true measure of its success.

For all of you we hope that the ideals of Durfee, involving, as they do, high standards of conduct and learning, will stand you in good stead.

Again our congratulations and best wishes.

Sincerely yours,

*William S. Lynch*

Superintendent of Schools.





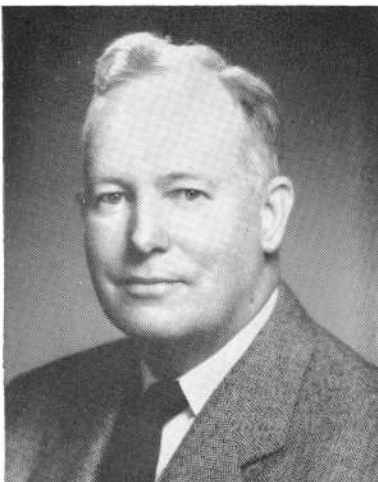
### To the Class of 1957:

There is something in graduation from high school which crystalizes at once sentiments that have long lain dormant. There are on the one hand a loyalty to B. M. C. Durfee High School, a sense of pride of accomplishment, a certain readiness to go on. In opposition, however, is the prospect of relinquishing a known, pleasant way of life and facing a future which appears nebulous and challenging.

But face the future you will, and with fortitude. The religious convictions and moral standards which have been with you since childhood have been strengthened by your association with other young people of character and with devoted, high-minded teachers. You have developed gradually also that ability to weigh and consider, that desire to separate from confused and often biased reports on every conceivable subject the gem of truth which must guide your thinking.

The by-word of the day is *automation*, and you are stepping into a wonder-world of scientific achievements which reduce to Lilliputian stature the wildest creations of the *Arabian Nights' Entertainments*, of Jules Verne, of H. G. Wells. You need not fear the "machine that make machines that make machines". They will not enslave you, who are strong individuals; rather you will use them to make a better world.

My heartiest congratulations go to every one of you as you graduate from Durfee. It is my earnest hope that you will all enjoy healthful and fruitful lives and that happiness will be your lot.



*Ambrose F. Kelley*

Principal

# FACULTY

Ambrose F. Keeley, *Principal*

Herbert W. Pickup, *Vice-Principal*

Amasa F. Williston, *Vice-Principal*

Thomas P. Cullen, *Assistant Director of Vocational Guidance*

Yolande B. Laliberte, *Associate Dean of Girls*

Alice C. Harrington, *Associate Dean of Girls*

Helen G. Amiot  
Carmi A. Belmont  
Eugenie W. Bent  
Clinton A. Borden  
M. Dolores Burns  
Bruce K. Carpenter  
Joseph O. Carroll  
Mildred V. Carroll  
Nancy Carroll  
William M. Cleare  
William K. Coady  
Hazel M. Conaty  
James F. Conlin  
Helen M. Connors  
Mary F. Corcoran  
Angeline B. Crispo  
John T. Crowley  
Joseph B. D'Adamo  
Frederick A. Dagata  
Margaret G. Dailey  
Armand A. Dallaire  
Edna U. Delahanty  
Gerard Delisle  
Margaret G. Doran  
Ruth N. Dow  
Edward B. Downs  
Ruth A. Downs  
Wilfred C. Driscoll  
Romeo J. Dufour  
Grace M. Dunn

Bernard Fletcher  
Ralph J. Fletcher  
Carrie T. Foulkes  
Virginia W. Frost  
Elinor F. Gilbert  
Lenora G. Goltz  
Chester Gosciminski  
Mary C. T. Grandfield  
Marjorie Gray  
Laura B. Hackett  
Frederick J. Harrington  
John J. Harrington  
Margaret M. Harty  
Joseph R. Hathaway  
George C. Hoar  
Katherine L. Hogan  
Matthew S. Jagielski  
Frank J. Jordan  
Mary E. Judge  
Margaret F. Keefe  
Helena A. Kelley  
Daniel Kelly  
John E. Kiley  
Mary Y. Kostas  
Joseph J. Lawlor  
Ruth M. Leary  
Herve B. Lemaire  
Elizabeth L. Leonard  
Katherine F. Lomax  
Earl V. Malmborg  
Grace L. Martin

Rose E. McHale  
William B. McIlwaine  
Irma Mello  
George A. Mitchie  
Constance Murphy  
Stephen Nawrocki  
Ruth W. Newkirk  
Caesar Nobrega  
Margarett E. Norton  
William A. Nugent  
Anne L. O'Neil  
John H. O'Neil  
Lorena Pacheco  
Margaret H. Powers  
H. Elton Sanford  
Antonio A. Serpa  
Henry J. Shea  
Jose M. Silva, Jr.  
Charles D. Smith  
Dominick R. Sperduti  
Anna L. Sullivan  
Dorothy C. Sullivan  
Helena V. Sullivan  
Mary E. Sweeney  
Marion L. Torphy  
Louis J. Urban  
Barbara Wellington  
Margaret J. Whalon  
A. Wilson Whitman  
Dorothy E. Wolstenholme

Florence M. Burns, clerk  
Ann T. Coughlin, clerk

Anna C. Harrington, clerk  
Kathryn A. Lenehan

### Ten Highest Ranking Seniors

STEPHEN AVRAMIDES	JANICE McLAUGHLIN
IRENE CARDOZA	BARBARA MELLO
RICHARD CORNELL	LYNNE RILEY
INA GOLDBERG	LOUISE E. SHAPIRO
BESSIE JAMOULIS	DANIEL SULLIVAN

### Class Officers

President ..... MARGARET MARY NAWROCKI  
Secretary ..... ELEANOR ARRUDA

### President of the Students Activities Association

VIVIAN MELLO

### President of the Home Room Directors

LUKE URBAN

### Editor of the Hilltop

LYNNE RILEY

# HALL OF FAME

**S  
T  
A  
F  
F**



**ALICE SULLIVAN**  
Editor



**PATRICIA KEPPLÉ**  
Assistant Editor



**LAURIA BULLOCK**  
Assistant Editor



**CAROL LUND**  
Typist



**MARGARET MOREAU**  
Typist





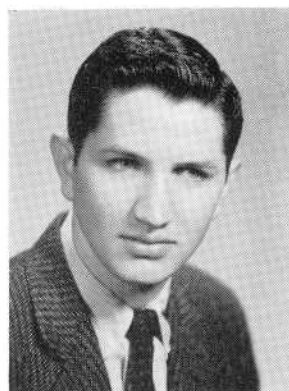
MARY HAMMOND  
Business Manager



HENRY KOWALSKI  
Sports Editor



AMBROSE F. KEELEY, JR.  
Assistant Business Manager



LOUIS SANFT  
Assistant Business Manager



JANET PAYER  
Typist



JANICE McLAUGHLIN  
Typist

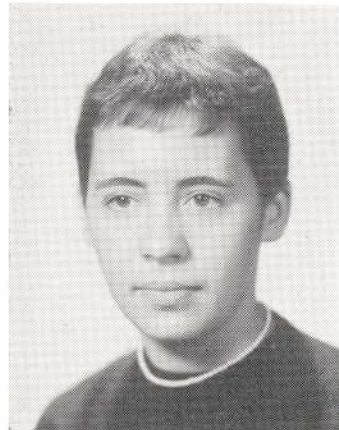
# W H O , S W H O

Margaret Mary Nawrocki	MOST POPULAR	Daniel Sullivan
Claire Shannon	BEST LOOKING	Norman Miville
Malinda Smith	MOST DIGNIFIED	Ambrose Keeley
Patricia Campos	MOST ATHLETIC	Gordon Andrew
Malorie Verros	BEST DANCER	Kenny Daby
Vivian Mello	CLASS WIT	Donald Lincoln
Beverly Greenwood	MOST INTERESTING	Thomas Salvo
Mary Hammond	BEST ALL-AROUND STUDENT	Luke Urban
Bessie Jamoulis	MOST BRILLIANT	Stephen Avramides
Geraldine Callahan	BEST SPEAKER	Ambrose Keeley
Janice McLaughlin	MOST LIKELY TO SUCCEED	Daniel Sullivan

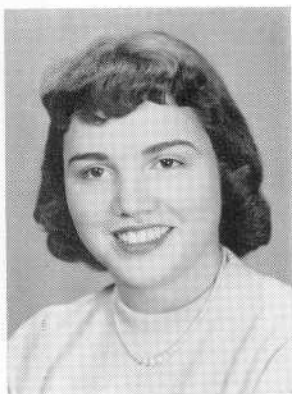




MARGARET MARY NAWROCKI  
President



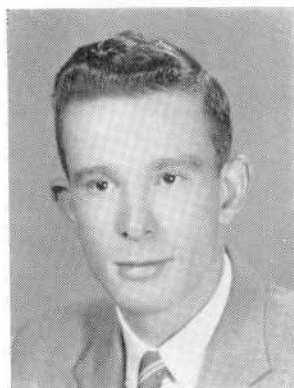
ELEANOR ARRUDA  
Secretary



**JOAN PATRICIA ABBOTT**

Bank Cashier 2, 3, 4  
Basketball 2  
Volleyball 2, 3

**RAYMOND ABBOTT**



**LYNNE ANITA ABBOTT**

National Honor Society 4  
Hilltop 4  
Spanish Club 3  
Literary Club 4  
Glee Club 2

**DAVID F. AGUIAR**

*"Dave"*



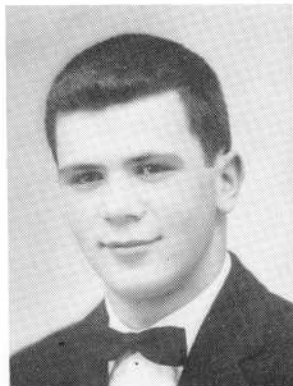
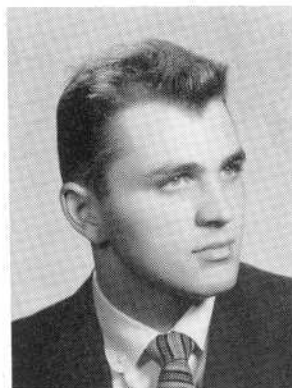
**CAROLE LOUISE AITKEN**

*"Carrie"*

Glee Club 2,3  
Basketball 2  
Office Aide 4

**RICHARD ALEXANDER**

Band 3  
Home Room Director 2  
Portuguese Club 2



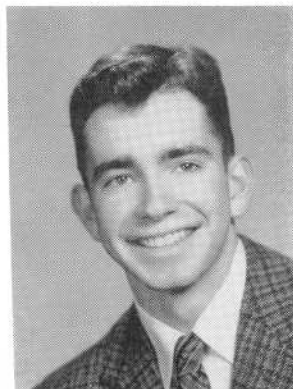
**BELISARIO ALEXANDRE ALMEIDA**

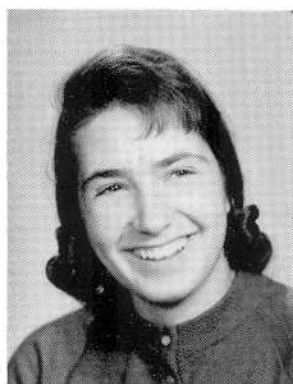
*"Billy"*

Dramatic Club 2, 3, 4  
National Thespian Society 3, 4  
Golf 3, 4  
Varsity Show 4  
Chess Club 2  
Portuguese Club 2, 3, 4

**CHARLES ALTJ**

National Honor Society 4





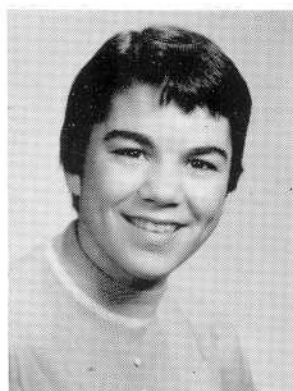
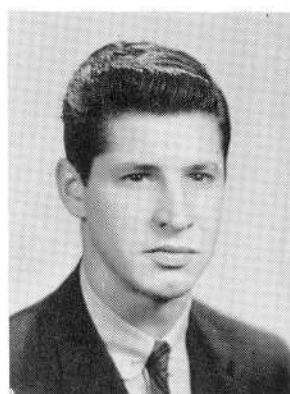
**DOLORES ANN ALVES**

*"Del"*

Numeral Club 3, 4  
Commercial Club 4  
Glee Club 2, 3, 4  
Portuguese Club 2  
Basketball 2, 4  
Softball 2, 3, 4

**ROGER J. ALVES**

Commercial Club 3, 4  
Varsity Club 4  
Baseball 2, 3, 4



**THERESA MARIE AMARAL**

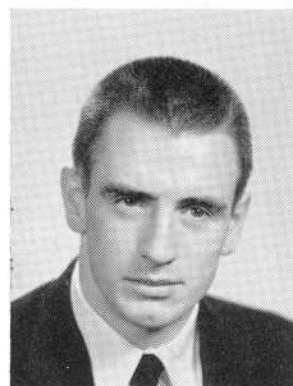
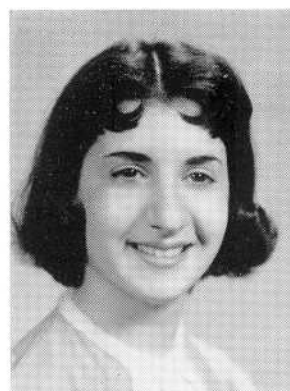
*"Terry"*

World History Club 4  
Glee Club 2

**ANGELINA ROSE AMEDEO**

*"Angie"*

National Honor Society 4  
Commercial Club 3  
Secretary 4  
Portuguese Club 2, 3  
Office Aide 4  
Glee Club 1, 2, 3

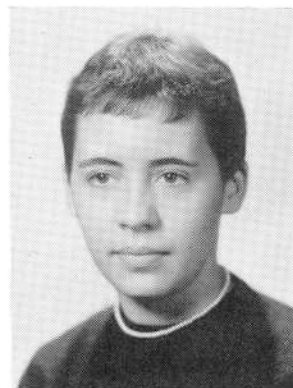
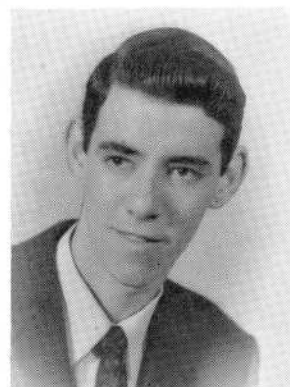


**GORDON MILTON ANDREW**

*"Buddy"*

Varsity Club 3, 4  
Football 3, Co-captain 4  
Reagan Trophy Winner 4  
Basketball 2, 3, 4  
Baseball 3, 4  
Track 3, 4

**RICHARD ANDREW ARAUJO**



**ELEANOR ARRUDA**

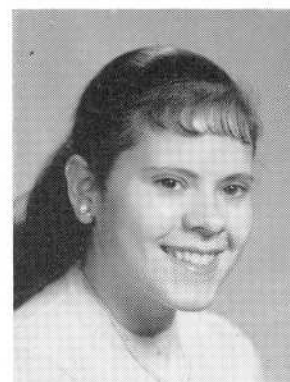
*"Elly"*

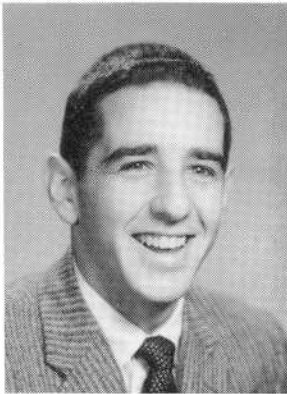
National Honor Society 3, 4  
Class Secretary 3, 4  
Home Room Director 2, 3, 4  
Sanco Secretary 3  
Numerical Club 2, 3, 4  
Varsity Sports 2, 3, 4

**GABRIELA ARRUDA**

*"Gabby"*

Portuguese Club 2, 3, 4  
Glee Club 2, 3  
Numerical Club 2  
Volleyball 2, 3  
Badminton 3  
Basketball 2

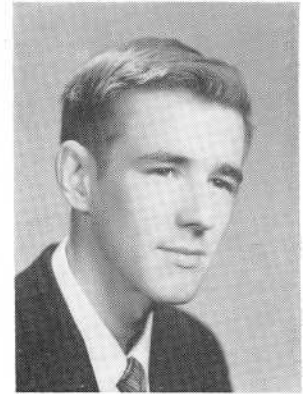




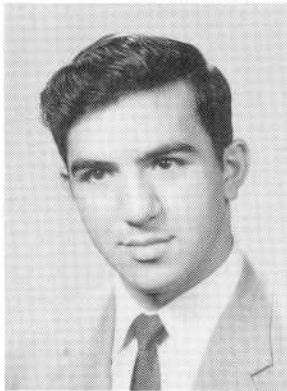
**THOMAS ARRUDA**

*"Tom" "Tommy"*

Varsity Club Treasurer 3  
Vice-President 4  
Baseball 1, 2, 3, 4  
Basketball 1, 2, 3, 4



**CHARLES ASHWORTH**



**STEPHEN AVRAMIDES**

*"Aristotle" "Steve"*

Glee Club 2  
Senior Mixed Chorus 2  
Sanitation Commission 2, 3, 4  
Health Councillor 4  
National Honor Society 3, 4  
Classical Club 3, 4



**THERESA ANN AYOUB**

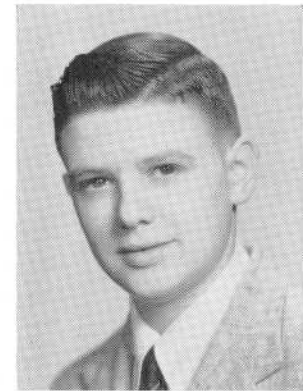
*"Terry"*

Camera Club 1, 2  
Glee Club 2, 3  
Basketball 2



**JUNE AYRE**

Literary Club 4  
World History Club 4  
Spanish Club 3  
Prom Committee 3  
Glee Club 2  
Basketball 2

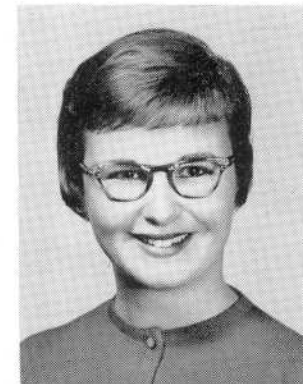


**JOSEPH EMILE BAKER**



**ARTHUR MARTIN BAKST**

Band 2, 3, 4  
Camera Club 3, 4  
French Club 4  
Math Club 3,4



**SUSAN BARKER**

*"Sue"*

Glee Club 2  
Basketball 2



**DONALD IRVING BEARDSWORTH**

**JACQUELINE ANN BEAULIEU**

*"Jackie"*

Office Aide 2, 3  
Noon-time Music 4

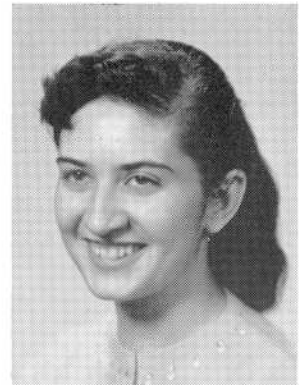


**EMMET JAMES BEHAN**

**BEVERLY JOYCE BENTO**

*"Bev"*

Portuguese Club 2  
Basketball 2, 3  
Volleyball 2  
Office Aide 4  
National Honor Society 4



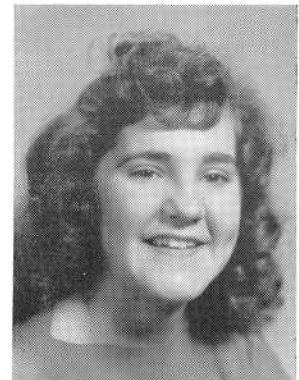
**NORMAN HENRY BERNARD**

*"Toby"*

**CAROL ANN BERUBE**

*"Dimples"*

Commercial Club 3  
Office Aide 4



**CHARLES BERUBE**

Golf 2

**CECELIA FRANCES BETTENCOURT**

*"Cecil"*

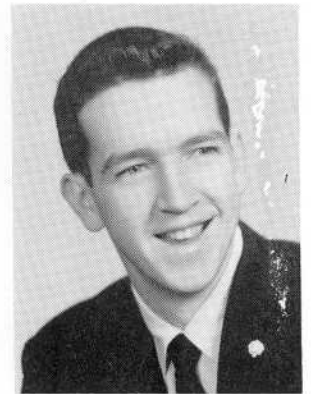
Glee Club 2  
Office Aide 4



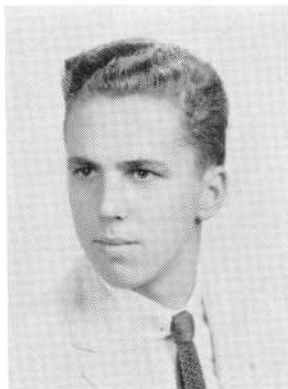




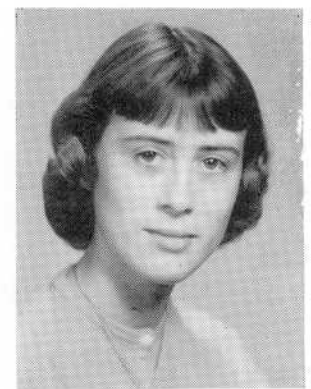
**BRUCE MUNROE BIBEAU**



**CHARLES JOSEPH BOOTH**  
*"Charley"*



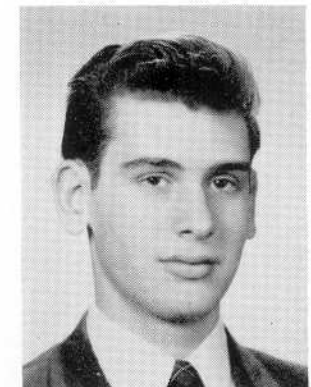
**ALFRED LOUIS BORGES**  
*"Fred"*



**JANICE ANN BORGES**  
*"Jan" "Chick"*  
World History Club 3  
Commercial Club 3  
Basketball 2  
Office Aide 4  
National Honor Society 4



**MARGUERITE BORGES**  
*"Margie"*  
Glee Club 2, 3, 4  
Portuguese Club 2, 4  
National Honor Society 4



**RICHARD MICHAEL BORGES**  
*"Ric"*  
National Honor Society 3, 4  
Classical Club 3  
Portuguese Club 3, 4

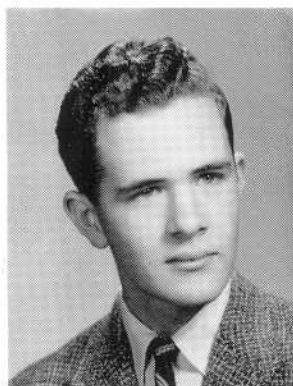


**PAUL BOSI**



**BEATRICE CATHERINE BOTELHO**  
*"Gina" "Bea"*  
Silvertones, All-State Chorus 4  
Senior Mixed Chorus 3, 4  
Glee Club 2, 3, 4  
Portuguese Club 2, 3, 4  
Basketball 2





**JOHN F. BOTTOMLEY**

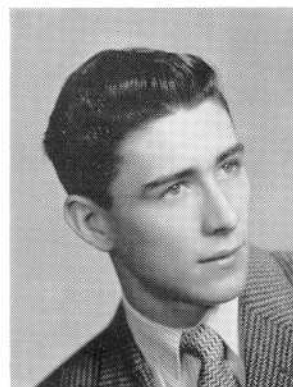
*"Jack"*

Traffic Squad 2  
Audio-Visual Aide 2

**ROLAND HENRY BOULAY**

*"Ron" "Ronnie"*

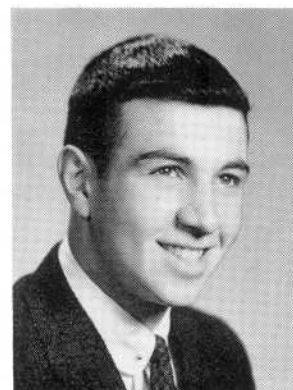
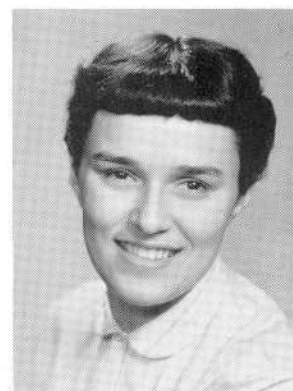
Home Room Director 1  
Health Councillor 2, 3  
Basketball 1  
Baseball 1  
Football 3, 4  
Varsity Club 4



**ANTONE BRAGA**

**GLADYS M. BRAZ**

World History Club 4  
Camera Club 4  
Junior Red Cross 3, 4  
National Honor Society 4



**RONALD BRIAND**

**RONALD BRIDGE**



**NANCY JANE BRIGGS**

Basketball 2

**CAROLYN JAYNE BROWN**

Hilltop 4  
Music Appreciation Club 4  
Camera Club 4  
Volleyball 2  
Glee Club 3  
National Honor Society 4

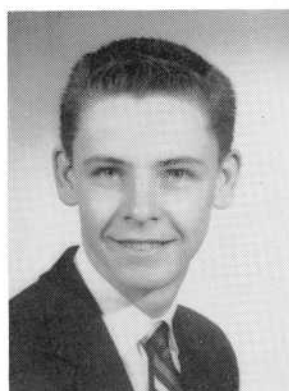




**JAY BUFFINGTON**

**LAURIA M. BULLOCK**

National Honor Society 3  
 Secretary 4  
 World History Club 2, 3, 4  
 Senior Mixed Chorus 3, 4  
 Glee Club 2, 3  
 Speaker's Bureau 4

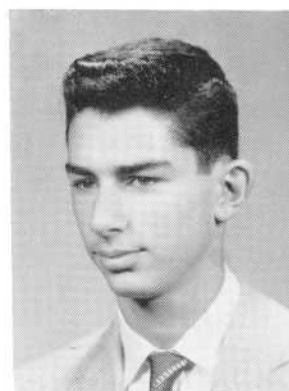


**DAVID BURNS**

**GERALD F. BURSTEIN**

*"Gerry"*

Dramatic Club 3, 4  
 Speakers' Bureau 4



**ROBERT C. BURSTEIN**

*"Bob"*

Office Aide 4



**MARY BYRON**

Camera Club 4



**EILEEN PATRICIA CABRAL**

*"Lee"*

Classical Club 3, 4

**HANNAH M. CABRAL**

National Honor Society 4  
 Speakers' Bureau 2, 3  
 Secretary 4  
 Student Council 2  
 Home Room Director 1, 2, 3, 4  
 Hilltop 4  
 Literary Club 2, 3, 4





**MARY ELIZABETH CABRAL**

*"Betty"*

Silvertones 4  
Commercial Club 4  
Portuguese Club 2, 4  
Glee Club 2, 3, 4



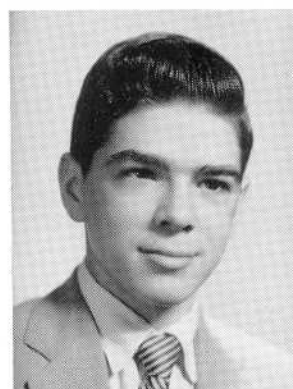
**MARY NANCY CABRAL**

Basketball 2  
Glee Club 2  
Commercial Club 3, 4



**GERALDINE D. CALLAHAN**

National Honor Society 4



**ROBERT J. CAMARA**

*"Bob"*

Portuguese Club 2, 3



**PATRICIA ANNE CAMPOS**

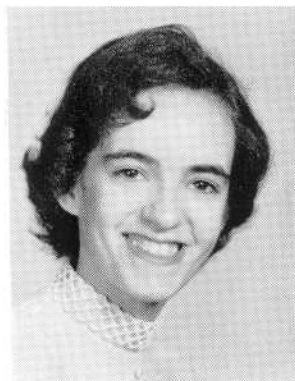
*"Pat" "Campy"*

Numeral Club 3  
President 4  
Portuguese Club 2, 3  
Basketball 2, 3  
Captain 4  
Volleyball 2, 3, 4



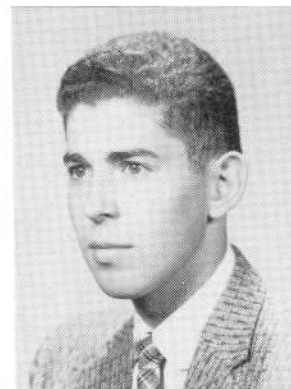
**MARIETTE R. CARDINAL**

*"Minnie" "Red"*



**IRENE M. CARDOZA**

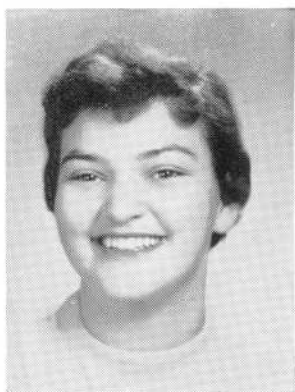
National Honor Society 3, 4  
Commercial Club 4  
Office Aide 4



**DONALD ANTHONY CARVALHO**

*"Don"*

National Honor Society 4  
Mathematics Club 3  
Traffic Squad 2, 3  
Home Room Director 3



**MADELINE ROSALIE CARVALHO**

*"Maddy"*

World History Club 2, 3, 4  
Numeral Club 3, 4  
Home Room Director 4  
Classical Club 3  
Bowling 3  
Basketball 2



**ROGER ARMAND CASTONGUAY**

*"Ralph"*



**DALE CAVANAUGH**

Orchestra 2, 3, 4



**BEVERLY MILLS CHACE**

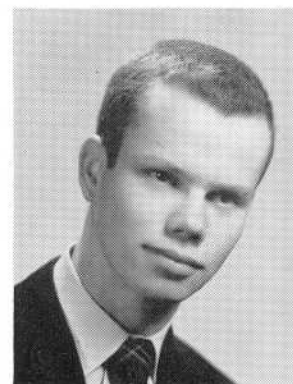
*"Bev"*

National Honor Society 4



**HARVEY IRWIN CHAFITZ**

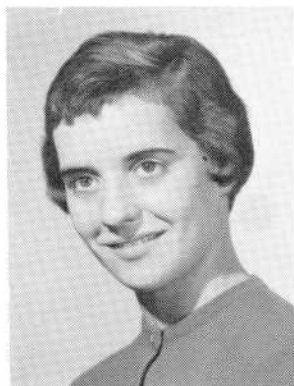
Science Club 3  
Treasurer 4  
German Club 2, 3, 4  
Mathematics Club 2, 3, 4



**HOWARD WAYNE CHAPMAN**

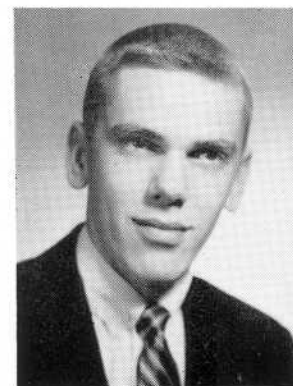
*"Howie"*

Band 2



**ANNA CHARETTE**

World History Club 2, 3, 4  
Numeral Club 3  
Basketball 1, 2  
Volleyball 1, 2, 3, 4  
Softball 3, 4  
Gym Leader 3, 4



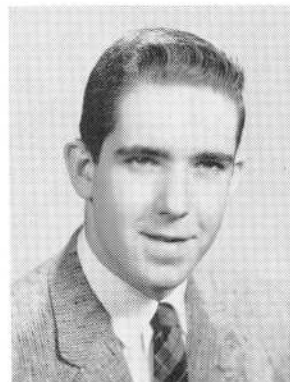
**RICHARD CHASE**

*"Dick"*

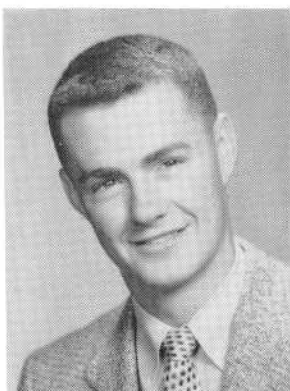
Glee Club 2, 3, 4  
Senior Mixed Chorus 3, 4  
Serenaders 4  
Track Team 3, 4



**ROBERT CIULLO**  
*"Bob"*  
 Sanco Councillor 2



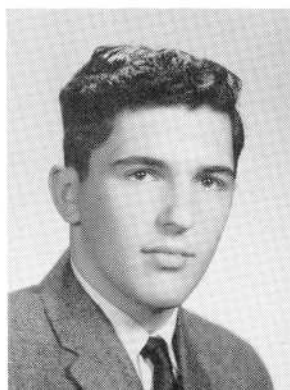
**ROBERT EDWARD CLARKE**  
*"Bob" Click"*  
 Basketball 1, 2  
 Baseball 1  
 Traffic Squad 4



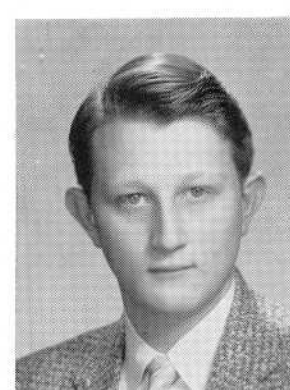
**RICHARD K. CLOUTIER**  
*"Red"*



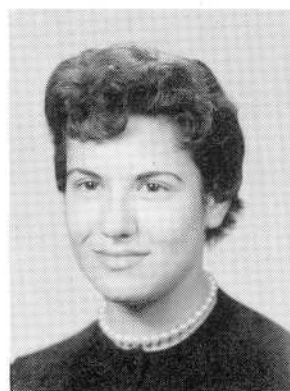
**JANET M. COELHO**  
*"Jan"*  
 Portuguese Club 2, 3  
 Glee Club 2, 3  
 Volleyball 2  
 Basketball 2



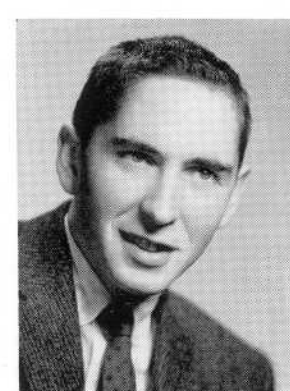
**THOME JOHN COELHO**  
*"Tom"*  
 Varsity Club 3, 4  
 Mathematics Club 2, 3, 4  
 Science Club 4  
 Tennis Team 2, 3, 4



**JAMES RENE COLLARD**  
*"Jim"*

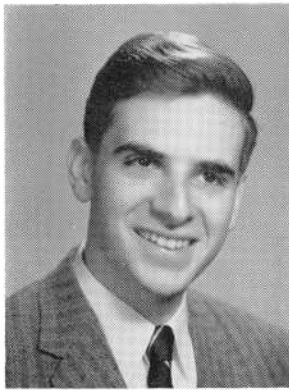


**MARIE F. COREA**  
 Commercial Club 3, 4  
 Office Aide 4  
 National Honor Society 4



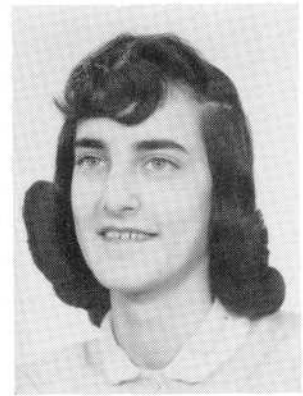
**RAYMOND O. CORMIER**  
*"Crutch"*  
 Science Club 3, 4  
 World History Club 3





**RICHARD CORNELL**

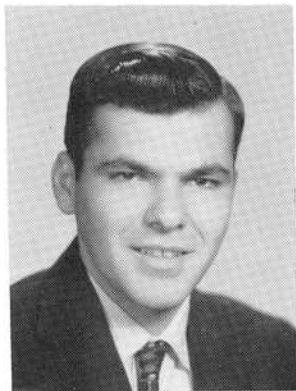
National Honor Society 3, 4  
French Club 3  
Library Aide 3, 4  
Speakers' Bureau 4  
Science Club 3, 4  
Mathematics Club, 3, 4



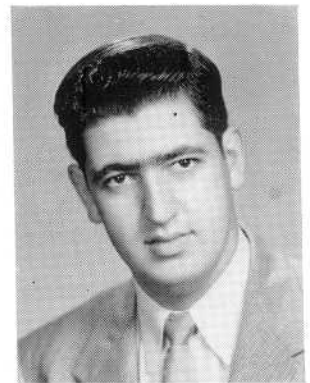
**BARBARA JEAN CORREIA**

*"Babs"*

Portuguese Club 2, 3, 4



**ROBERT M. CORREIA**



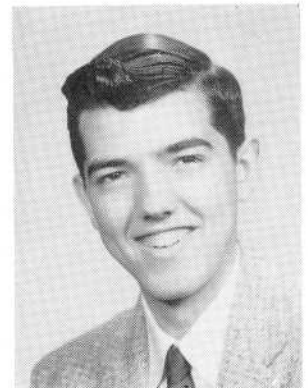
**EDWARD A. COSTA**

*"Big Ed"*



**ELAINE COSTA**

Glee Club 3



**ERNEST COSTA**

*"Ernie"*

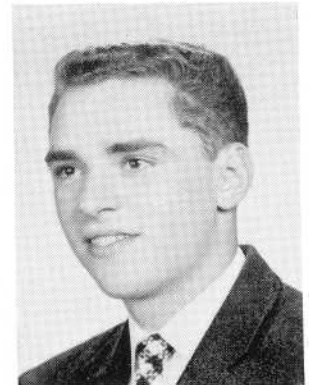
Portuguese Club 3



**JOANNE ELIZABETH COSTA**

*"Jo"*

Portuguese Club 2, 3  
Glee Club 2, 3, 4

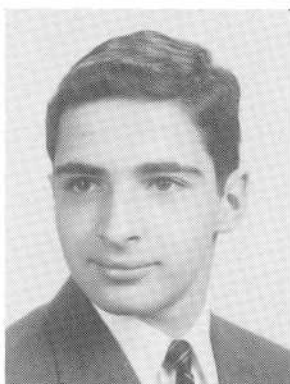


**JOSEPH MICHAEL COSTA**

*"Mickey"*

Portuguese Club 2, 4

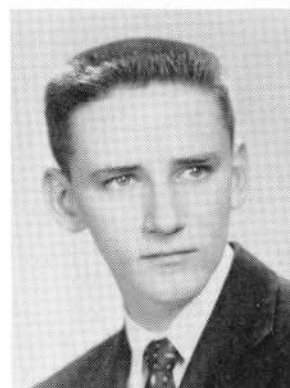




**RICHARD ANTHONY COSTA**

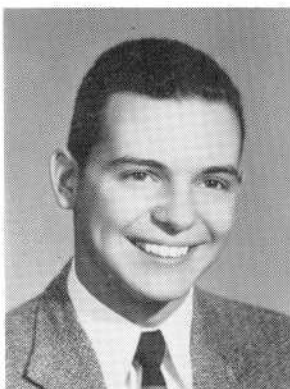
*"Dick"*

National Honor Society 4  
Mathematics Club 4  
Portuguese Club 2, 3  
Junior Red Cross 4  
Sanitation Commission 2, 3, 4  
Prom Committee 3



**RONALD COULOMBE**

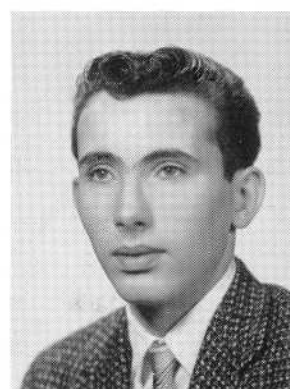
*"Cuks"*



**GERALD COUTO**

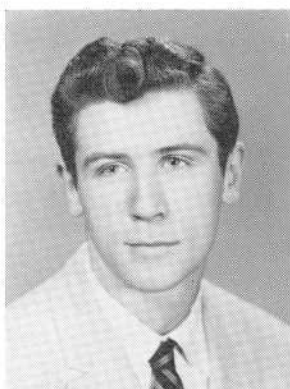
*"Jerry"*

Football 3, 4  
World History 3, 4



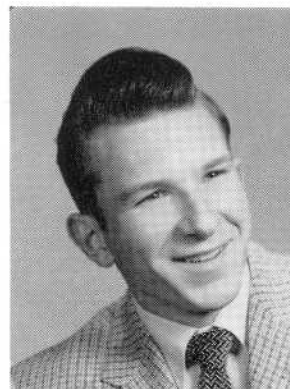
**WILLIAM NELSON CRAIG**

*"Bill"*



**JAMES DANIEL CROSSON**

*"Jim"*



**MARCEL FRANCIS CRUDELE**

*"Marce"*

Hilltop Serenaders 3, 4



**ANN KATHLEEN CURT**

*"Kathy"*

Dramatic Club 2, 3  
Historian 4  
National Thespian Society 3  
President 4  
Library Aide Treasurer 3  
Home Room Director 3



**WILLIAM KENNY DABY**

*"Kenny"*

World History Club 4



**BRADFORD LEE DALY**

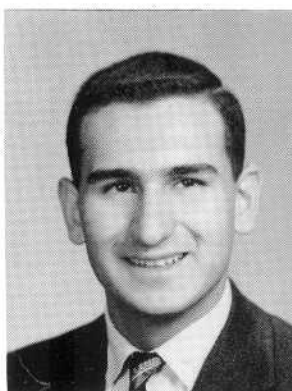
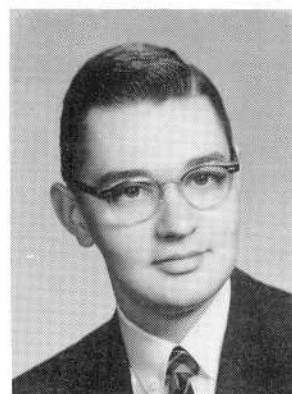
*"Brad"*

Track 3, 4  
Baseball 1, 2  
Basketball 1, 2, 3  
Football 2

**THOMAS A. DAVOL, JR.**

*"Tommy"*

Speakers' Bureau 4  
Band 3  
Business Manager 4  
Orchestra 2, 3, 4  
Health Council 3

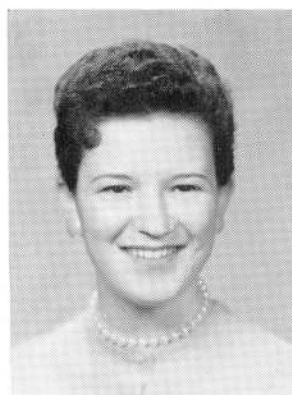
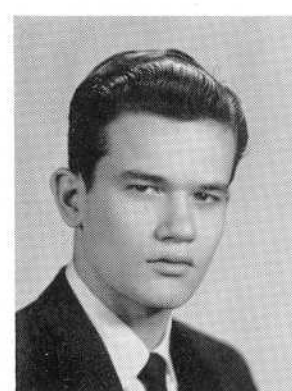


**CARL DEEB**

Hilltop Serenaders 2, 3, 4  
Golf 3  
Health Councilor 1, 4  
Senior Mixed Chorus 2, 3  
Glee Club 2, 3  
Math Club 3, 4

**DONALD CHARLES DeMELLO**

*"De"*



**SANDRA ANN DEPIN**

*"Sandy"*

Home Room Director 2  
Commercial Club 3, 4  
Basketball 2

**DORIS MARY DESCHENES**

*"Dot"*

Basketball 2



**LUCILLE ROSE DESMARAIS**

*"Lucy" "Lue"*

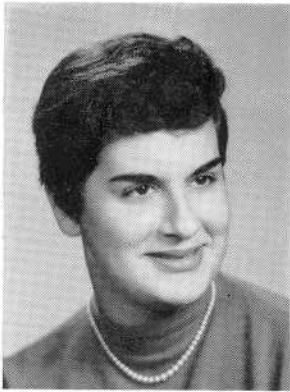
Glee Club 2, 3, 4  
Mixed Chorus 4

**GERALDINE DIAS**

*"Gerry"*

Portuguese Club 2  
Glee Club 2, 3





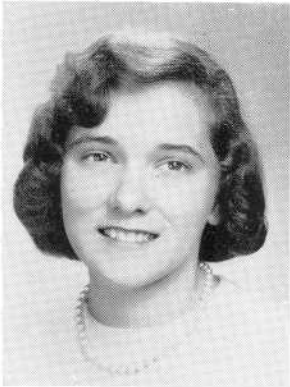
**ROSE L. DIAS**

*"Rosie"*

Commercial Club 4  
Glee Club 2  
Basketball 2  
Volleyball 2

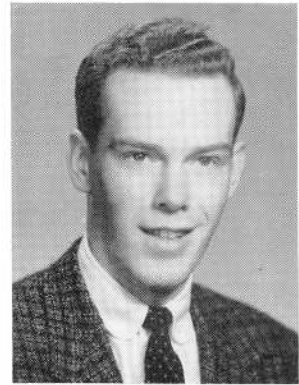


**JANICE Di NUCCI**



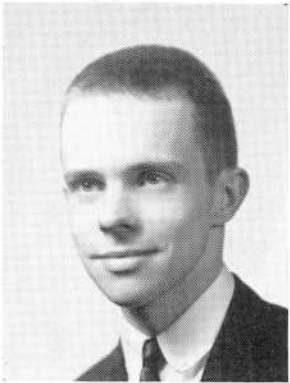
**JEAN IRENE DOIGE**

*"Jeannie"*



**PATRICK JOHN DONOVAN**

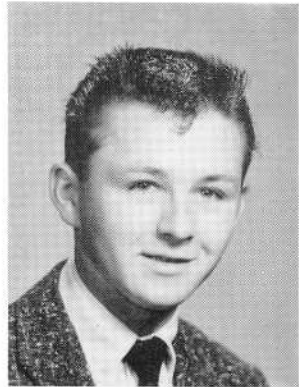
Home Room Director 2, 3, 4  
Audio-Visual Aide 2, 3, 4



**ROBERT STEPHEN DORSEY**

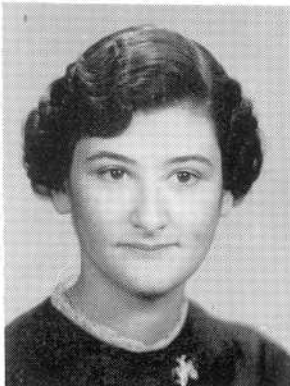
*"Bob"*

Hilltop Business Manager 4  
Track 3



**ROBERT MICHAEL DREWNIAK**

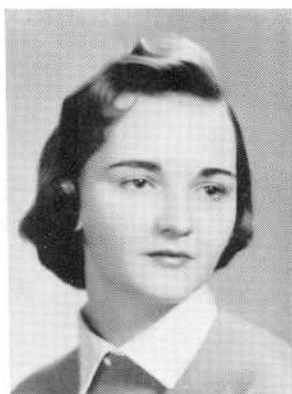
*"Bob"*



**SYLVIA CLAIRE DUBITSKY**



**LORRAINE DUFAULT**



**ANDREA LORETTA DUFFY**

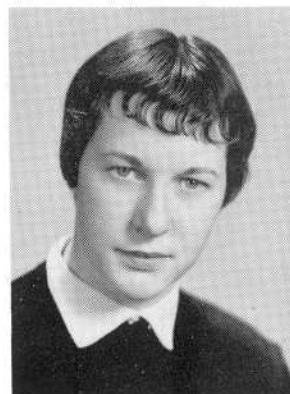
*"Duff" "Andy"*

Band 2, 3, 4  
Speakers' Bureau 4  
Home Room Director 3, 4  
National Honor Society 3, 4

**MAUREEN J. DUNLEA**

*"Moe"*

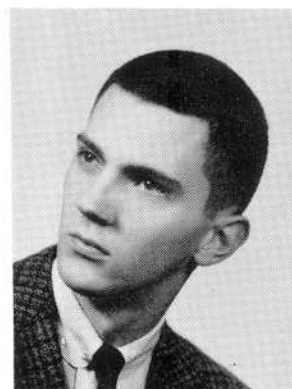
Commercial Club 4  
Camera Club 4  
Glee Club 1, 2  
Noontime Music 4



**PAUL H. DUPERRE**

*"Rod"*

**ROBERT DUPRE**

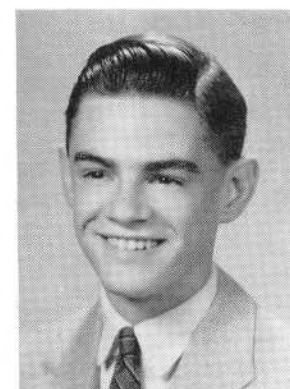


**EDMOND DUQUETTE**

**JOHN ANTHONY DUTRA**

*"Jack"*

Speakers' Bureau 4  
World History 2, 3, 4  
Portuguese Club 3, 4  
Chess Club 2, 3



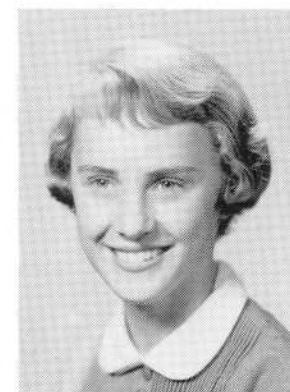
**JOHANNA NANCY DWYER**

*"Jo"*

**NANCY ELAINE ELLIS**

*"Nan"*

National Honor Society 4  
Majorette 3, 4  
Basketball 2, 3  
Home Room Director 1, 2, 3  
Library Aide 2, 4

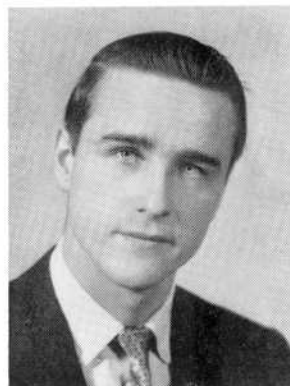




**JOYCE ELIZABETH EMMETT**

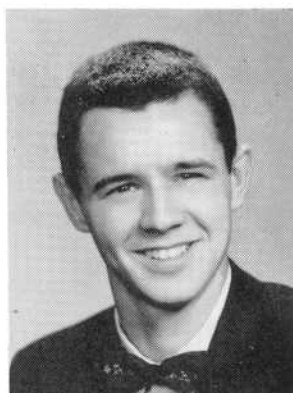
*"Joyce", "Squeaky"*

National Honor Society 3, 4  
Mixed Chorus 3, 4  
Glee Club 2, 3, 4  
Silvertons 3, 4  
Commercial Club 3, 4



**NORMAN WILFRED EMOND**

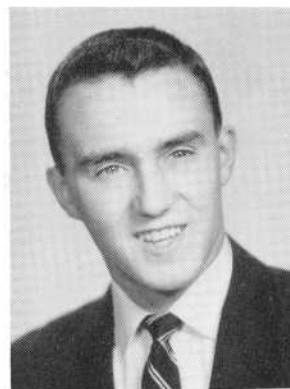
Speakers' Bureau 3  
French Club 4



**JOHN WILLIAM ESPERIAN**

*"Jack"*

Track 2, 4  
Co-Captain 3  
Home Room Director 3  
Varsity Club 3, 4



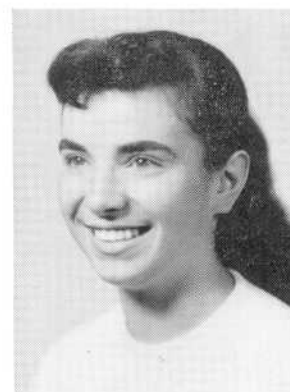
**RICHARD ESTRELLA**



**OLIVIA F. C. FARIAS**

*"Olive", "Ollie"*

World History Club 2, 3  
Glee Club 2, 3, 4  
Mixed Chorus 4  
Basketball 2



**IRENE F. FARINHA**

*"I"*

Spanish Club 2, 4  
Secretary 3  
Glee Club 1, 2  
Basketball 2



**GERALD FERREIRA**

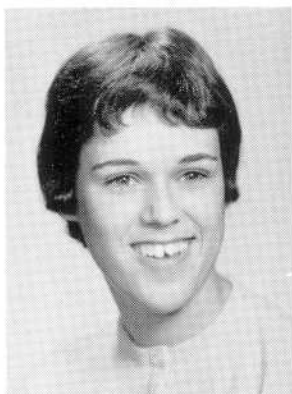


**PAULINE ANN FERREIRA**

*"Paula"*

Commercial Club 3, 4  
Basketball 2  
Volleyball 2





**ANNE LOUISE FERRIS**

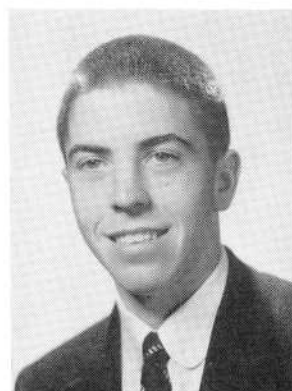
*"Peachy"*

Glee Club 2, 3, 4  
Basketball 2  
Volleyball 1, 2  
Portuguese Club 2, 3

**BARBARA FISCHER**

*"Bobby"*

Sanitation Commission President 4  
Orchestra 2, 3  
Assistant Manager 4  
String Quartet 3, 4  
Mathematics Club 3, 4  
Science Club 4



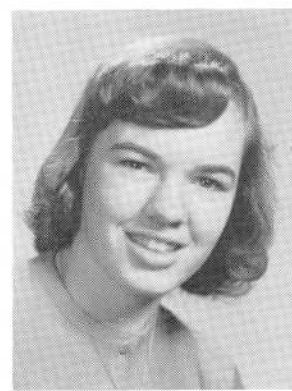
**WILLIAM E. FITZGERALD**

*"Fitzzy"*

**PATRICIA MAY FOGARTY**

*"Pat"*

Glee Club 2, 3, 4

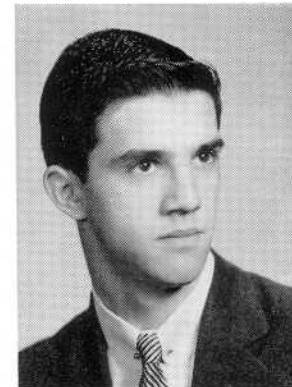


**GERALDINE FONSECA**

Dramatic Club 2, 3, 4  
Thespians 3, 4  
Commercial Club 3, 4  
Camera Club 2, 3, 4  
Office Aide 4  
Basketball 2, 3

**JOHN GIL FONSECA**

Orchestra 1, 2  
Concert Master 4  
Band 2, 3, 4  
Music Appreciation President 3  
All-State Orchestra 1, 2, 3  
Home Room Director 1, 2



**CAROLYN MARIE FOX**

*"Lynn"*

Commercial Club 3, 4  
Glee Club 2  
Health Councillor 2  
Cafeteria 4

**ELEANOR RUTH FOZZARD**

*"Ellie"*

World History Club President 4  
Music Appreciation Club 4  
Classical Club 4





**NORMA SANDRA FRANCO**

*"Sandy"*

Portuguese Club 2, 3, 4  
Glee Club 2, 3  
Basketball 2



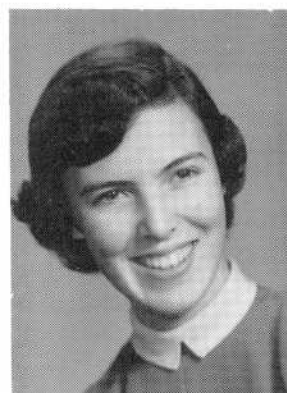
**MICHAEL ROBERT FREITAS**

*"Mickey"*

Football 3, 4  
Baseball 3, 4  
Varsity Club 3, 4



**ANN ELIZABETH FRENCH**



**SANDRA FRIAR**

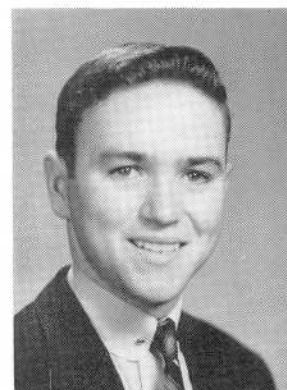
National Honor Society 4



**ALMA GLENICE GAGNON**

*"Glen"*

Thespian Society Secretary 3, 4  
Dramatic Club 2, 3, 4  
Senior Mixed Chorus 3, 4  
Glee Club 3, 4  
Vocalaires 3, 4  
Basketball 2



**DAVID GAVIGAN**



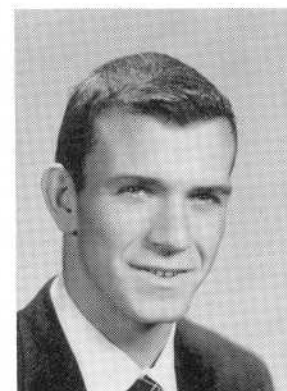
**JOHN GEARY**

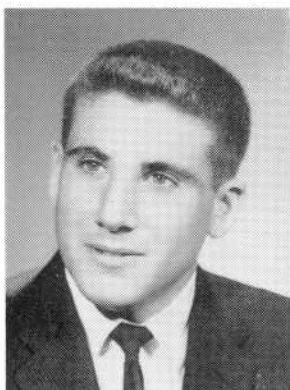
Senior Mixed Chorus 2, 3, 4  
Glee Club 2, 3, 4  
Hilltop Serenaders 2, 3, 4  
Dramatic Club 2, 3  
National Thespian Society 3, 4

**JOHN RUSSELL GIBSON**

*"Russ", "Gibby"*

Baseball 1, 2, 3, 4  
Basketball 1, 2, 3, 4  
Football 1, 2, 3, 4  
Varsity Club Vice-president 3  
President 4





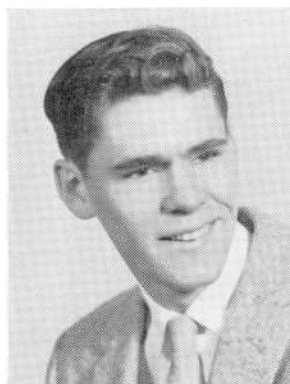
**LOUIS CARL GIZZI**  
World History Club 4

**INA SARA GOLDBERG**  
National Honor Society 3, 4  
Library Aide 2, 3, 4  
Spanish Club 2, 4  
Vice-President 3  
Mathematics Club 2, 3, 4  
Speakers' Bureau 4



**JOSEPH PATRICK GOLDEN**  
*"Joe"*  
Home Room Director 3

**BARBARA GOSSON**  
*"Babs"*



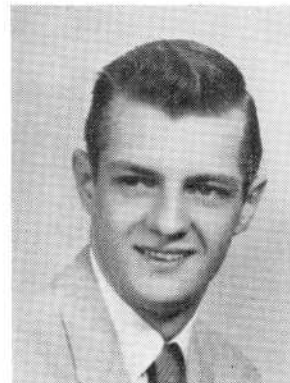
**CHARLES GREENE**  
*"Charlie"*

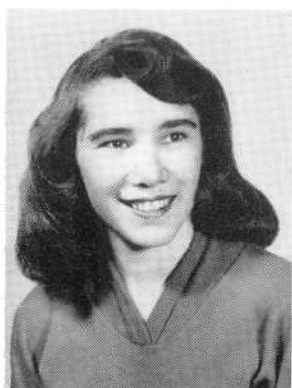
**BEVERLY ANN GREENWOOD**  
*"Bev"*  
National Honor Society 4  
Majorette 3, Head 4  
Home Room Director 2  
Basketball 2  
Bowling 3



**BEVERLY ANN GREENWOOD**  
*"Bev"*  
Home Room Director 3, 4  
Portuguese Club 2, 3, 4  
Glee Club 3  
Volleyball 1, 2, 3  
Basketball 2

**OSCAR WILLIAM GUAY**  
*"Chick"*  
Commercial Club 3, 4

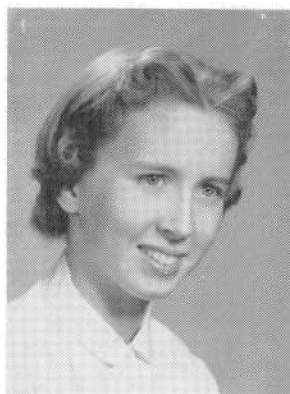




**THERESE RHEA GUERTIN**

*"Terry"*

Commercial Club 4  
Basketball 2  
Volleyball 2



**ALICE MARGARET GUILMETTE**

National Honor Society 4  
Music Appreciation 1, 2, 3  
President 4  
Library Aide 3, 4  
Science Club 3, 4  
Mathematics Club 3, 4



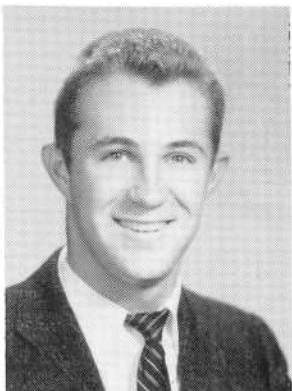
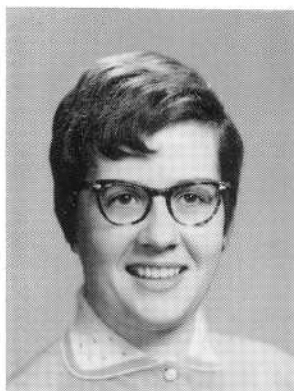
**BARBARA JOYCE GUILMETTE**

*"Barb"*

**LENORE ESTHER GUSTAFSON**

*"Lee"*

Glee Club 2, 3, 4  
Senior Mixed Chorus 3, 4  
Sivertones 3, 4  
Lead in Operetta 3  
Orchestra 4  
Speakers' Bureau 4

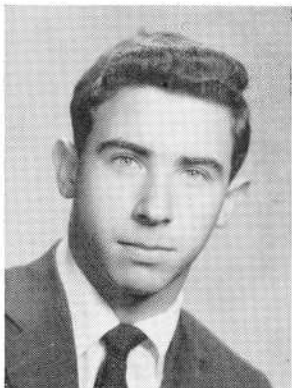
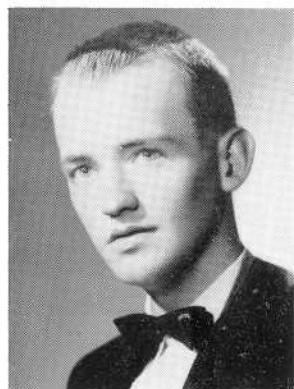


**GORDON B. HACKETT**

World History Club 4  
Track 2, 3, 4  
Literary Club 4  
Math Club 4  
Health Council 4  
Sanitation Commission 4

**PAUL W. HACKETT**

Dramatic Club 2, 3, 4  
Thespian Society 4  
Hilltop Sports Editor 4  
Glee Club 2  
Senior Mixed Chorus 2

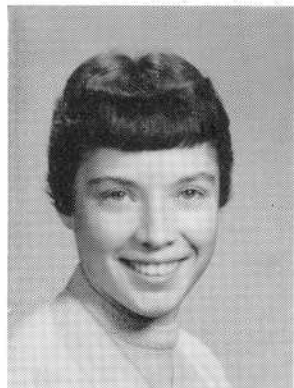


**JEROME HAHN**

Varsity Club 2, 3, 4  
Tennis Co-Captain 2, 3, 4  
Mathematics Club 3, 4  
Science Club 3, 4  
German Club 2, 3  
National Honor Society 4

**MARY E. HAMMOND**

National Honor Society 3, 4  
Business Manager Record Book 4  
Home Room Director 4  
Numeral Club Secretary 3  
Volleyball 2, 3, 4  
Basketball 2



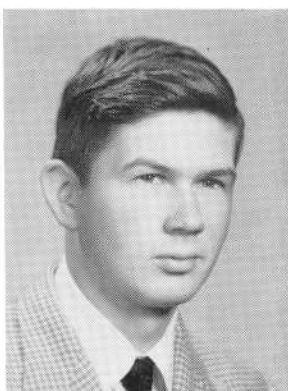


**JAMES HAMPSTON**

**NANCY R. HARRISON**

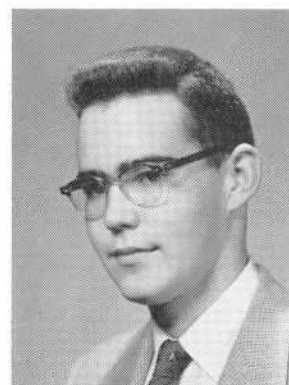
*"Nan", "Harri"*

Orchestra 3  
Business Manager 4  
Band 3, 4  
Music Appreciation 3, 4  
Mathematics Club 2, 3, 4  
National Honor Society 4



**WILLIAM ROGER HARRISON**

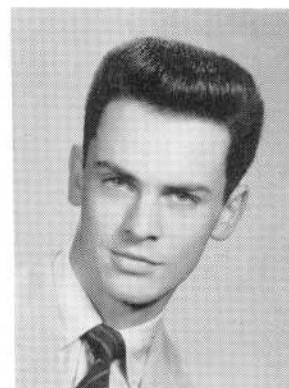
Science Club 3  
Vice-President 4



**STEPHEN SCOTT HART**



**PATRICIA HAYES**



**ROBERT JOSEPH HEBERT**

*"Bob"*



**THERESA ELIZABETH HEFFERNAN**

*"Terry"*

Commercial Club 3, 4  
Camera Club 3  
National Honor Society 4

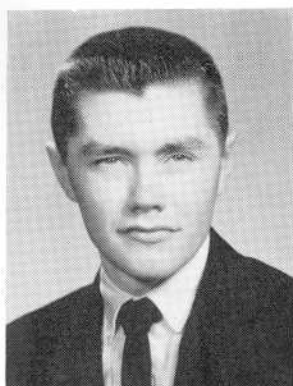


**MARJORIE ANN HEROUX**

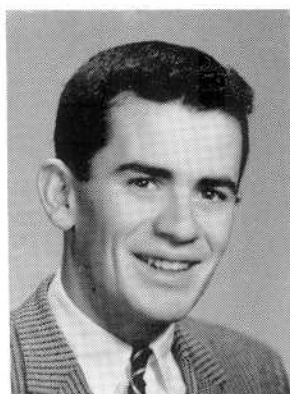
*"Margie"*

Glee Club 2, 3, 4





**DANIEL JOHN HICKEY**



**GERALD F. HICKEY**

*"Jerry", "Hic"*

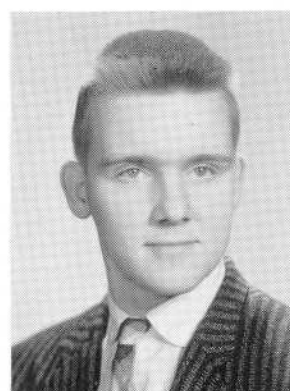
Football 2, 3, 4  
Baseball 3, 4  
Varsity Club 4  
Office Aide 4



**LOIS MAE HICKS**

*"Lo"*

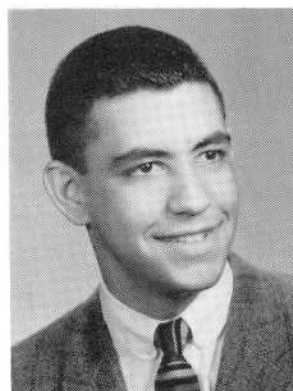
National Honor Society 4  
Mathematics Club 2  
President 4  
Vice-President 3  
Science Club 2, 3, 4  
Orchestra 1, 2, 3, 4



**DAVID BRADLEY HIGGINBOTTOM**

*"Higgy"*

Home Room Director 4



**KENNETH S. HILLMAN**

*"Ken"*

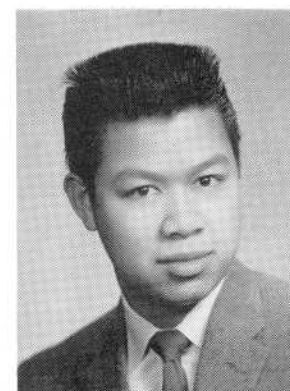
Band 2, 3, 4  
Orchestra 2, 3, 4  
All-State Band 3, 4



**NANCY HOLLERAN**



**KING G. HOM**



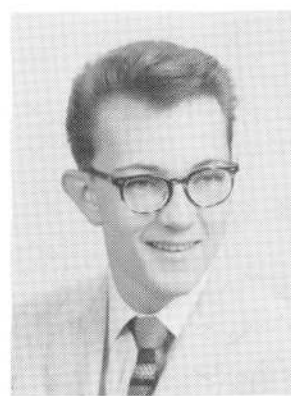
**RANDY HOM**



**JUDITH ELLEN HORDERN**

*"Judy"*

Glee Club 1, 2, 3, 4  
Senior Mixed Chorus 4  
Commercial Club 3, 4  
World History Club 2  
Badminton 3  
National Honor Society 4



**JOHN MITCHELL HUGHES**

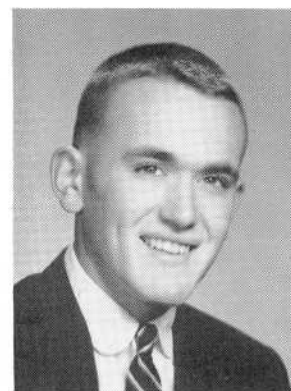
*"J. D."*

Camera Club 4



**KENNETH JEAN HUNT**

*"Ken"*



**BRUCE E. HUTCHINSON**

*"Hutch", "Goose"*

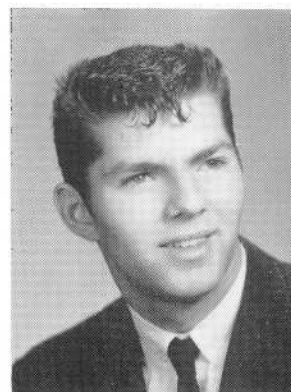
World History Club 4  
Band 2, 3  
Golf 2, 3, 4  
Varsity Club 3, 4



**DALE ANNE HUTCHINSON**

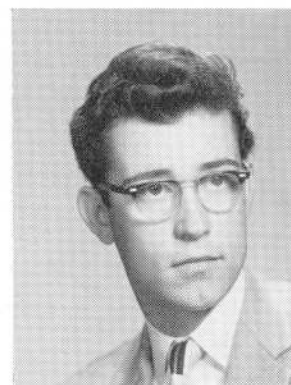
*"Hutch"*

Numerical Club 3  
Vice-President 4  
Commercial Club 4  
Basketball 2, 3, 4  
Office Aide 4  
Glee Club 2, 3



**KENNETH ROBERT ISIDOR**

*"Izzie"*



**JOSEPH M. JACOMO**

*"Jo"*



**BESSIE J. JAMOULIS**

National Honor Society 3, 4  
Chess Club President 4  
Vice-President 3  
Secretary 2  
Library Aide 3, 4  
Secretary 2



**BRADFORD L. JEAN**

*"Brad"*

**ILENE MARIE KANUSE**

Office Aide 4



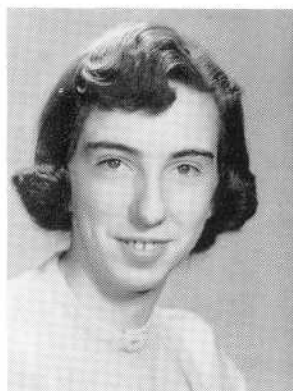
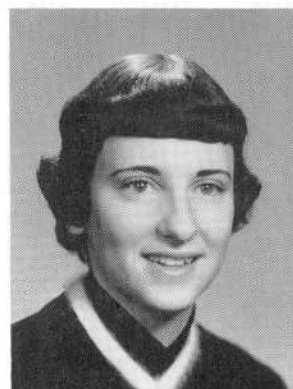
**WILLIAM ALLEN KARP**

*"Billy"*

Dramatic Club 2, 3, 4  
National Thespian Society 4  
Mathematics Club 2, 3, 4  
Science Club 3, 4  
National Honor Society 4

**DIANE KAUFFMAN**

Literary Club Vice-President 4  
Glee Club 1, 2  
Dramatic Club 2, 3



**BARBARA M. KEANE**

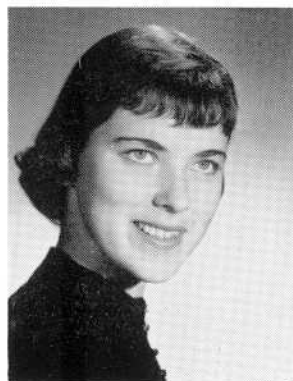
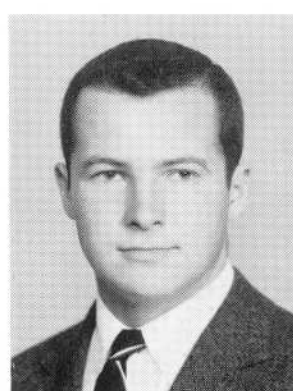
*"Babs"*

Camera Club 4  
Music Appreciation Club 4

**AMBROSE FRANCIS KEELEY**

*"Amby"*

National Honor Society 3, 4  
Football 2, 3, 4  
Band 2, 3, 4  
Orchestra 2, 3, 4  
Home Room Director 2, 3, 4  
Classical Club President 4



**RITA MARIE KENNEY**

*"Snooky"*

Cheerleader 3, 4

**PATRICIA ANNE KEPPLER**

*"Pat"*

Record Book Assistant Editor 4  
Senior Mixed Chorus 3  
Glee Club 2, 3  
World History Club 4  
Prom Committee 3  
Dramatic Club 2

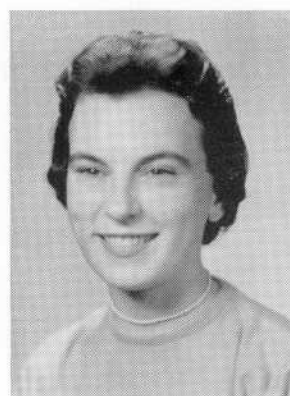




**MAUREEN ANN KERN**

*"Moe"*

Health Councillor 1  
Commercial Club 3, 4  
Office Aide 4



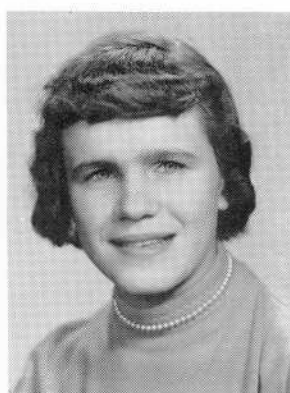
**JOAN MARGARET KERRIGAN**

Dramatic Club 2, 3, 4  
Glee Club 2, 3, 4



**HELEN KLEK**

Glee Club 2  
Basketball 2  
Dramatic Club 2, 3, 4  
Thespian Society 3, 4  
Commercial Club 4



**VIRGINIA ANN KNAPINSKI**

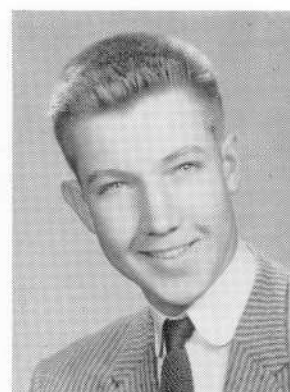
*"Ginny"*

Glee Club 2



**HENRY W. KOSIOR**

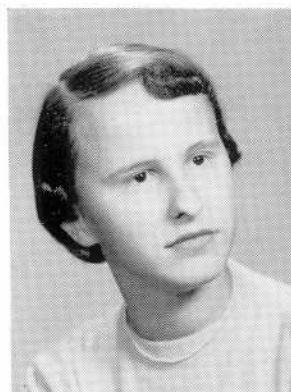
*"Hank"*



**HENRY ANTHONY KOWALSKI**

*"Hank"*

National Honor Society 3, 4  
Library Aide 3, 4  
Varsity Club 4  
Football 2, 4  
Health Councillor 2, 4  
Classical Club 3, 4



**ELAINE CATHERINE KOZAK**

Basketball 2



**LILLIAN IRENE LAGACE**

*"Lonnie"*

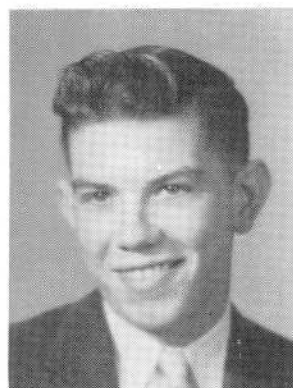
Commercial Club 3  
Senior Mixed Chorus 3, 4  
Glee Club 2, 3, 4  
Silvertones 4  
Volleyball 2, 3  
Basketball 2



**CLAIRE LAMBERT**

*"Sis"*

Glee Club 3, 4  
Basketball 2  
Volleyball 1, 2



**NORMAND LEO LAMBERT**

*"Norm"*



**REGINA MARY LaMONTAGNE**

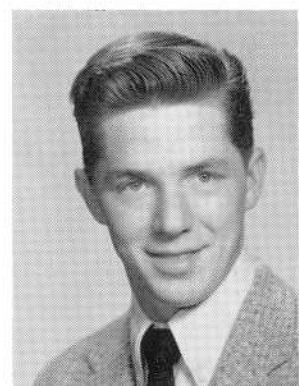
*"Reggie"*

Commercial Club 3, 4  
Camera Club 3  
Glee Club 2  
Basketball 2  
National Honor Society 4



**ANN LOUISE LANE**

Home Room Director 4  
World History Club 4  
Music Appreciation Club 4



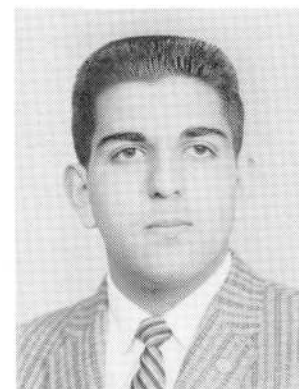
**DONALD ROLAND LANGLAIS**

*"Pierre", "Lang"*



**MARY LOUISE LAPRE**

Basketball 2  
Commercial Club 4



**LOUIS EDWARD LATAIF**

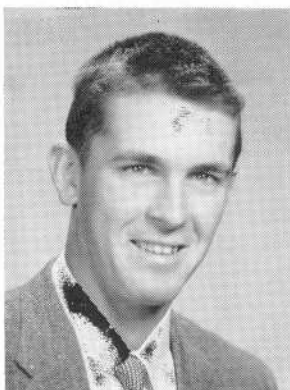
National Honor Society 4  
Speakers' Bureau 4  
Library Aide Social Chairman 4  
Home Room Director 1, 2, 3  
Dramatic Club 2  
Drama Festival 2

**JACQUELINE SUZANNE LaVAULT**

Senior Mixed Chorus 2, 3  
Mathematics Club 4  
Health Councillor 4  
Sanco 4  
Camera Club 4  
Basketball 2



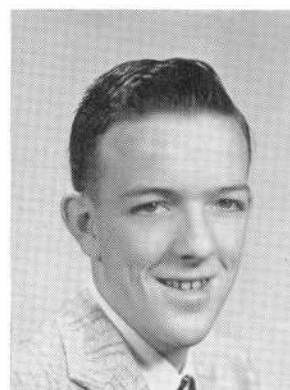




**TIMOTHY JOSEPH LEARY**

*"Tim"*

Football 2, 3, 4  
Track 3  
Varsity Club 3, 4



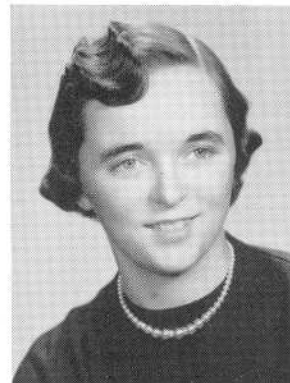
**RICHARD LEDOUX**



**LORRAINE JOYCE LEITE**

*"Shorty", "Lorry"*

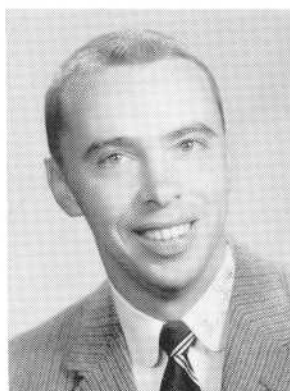
Portuguese Club 2, 3, 4  
Basketball 2  
Cafeteria 2, 3, 4



**CAROLYN ELAINE LEONARD**

*"Carol"*

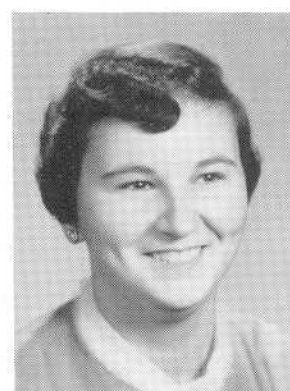
Health Councillor 3



**ALCIDE GERARD LEVESQUE**

*"Sid"*

Home Room Director 4  
Commercial Club 4  
Office Aide 3, 4



**BERNADETTE NOELLA LEVESQUE**

*"Bernie"*

World History Club 3  
French Club 2  
Basketball 2



**FREDERIC LAURANCE LEVY**

Dramatic Club 3, 4  
Science Club 3  
Thespian Society 4  
Spanish Club 2  
Glee Club 2  
Senior Mixed Chorus 2

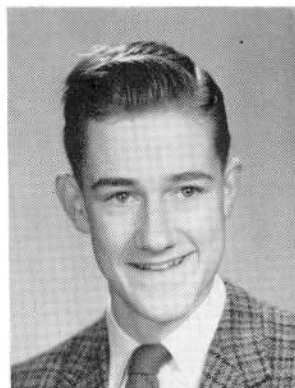


**DIANE LIFRAK**

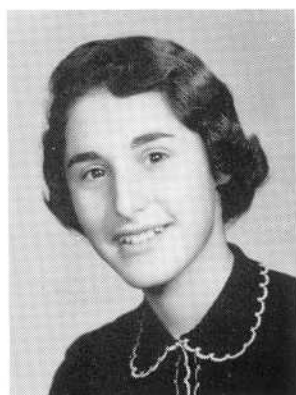
Science Club 3, 4  
French Club 3  
Glee Club 2, 3  
Mathematics Club 3, 4  
Camera Club 4



**JOSEPH RICHARD LIMA**  
*"Marlon"*

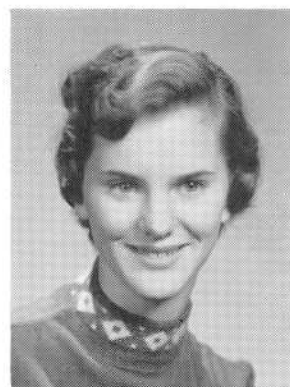


**DONALD W. LINCOLN**  
*"Don"*  
Hilltop 4



**JOAN BARBARA LIPSON**  
*"Joanie"*

Dramatic Club 4  
Science Club 4  
Senior Mixed Chorus 3, 4  
Glee Club 2, 3  
Home Room Director 2



**JANICE LITAWAY**  
*"Jan"*

Glee Club 2, 3, 4  
Senior Mixed Chorus 4  
Commercial Club 4



**FLORENCE ELAINE LOUIS**  
*"Flossie"*

Commercial Club 3, 4  
Glee Club 3  
Basketball 2  
Camera Club 1, 2



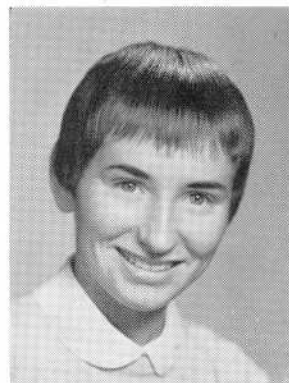
**NORMA RUTH LOVIT**

National Honor Society 4  
Spanish Club 3, 4  
Dramatic Club 3  
Science Club 3  
Glee Club 2, 3  
Chess Club 4

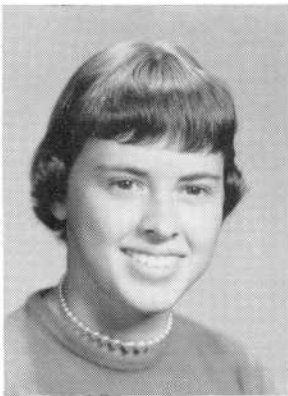


**CAROL FRANCES LUND**

National Honor Society 4  
Commercial Club 3  
Vice-President 4  
Record Book Typist 4  
Camera Club 3  
Office Aide 3, 4

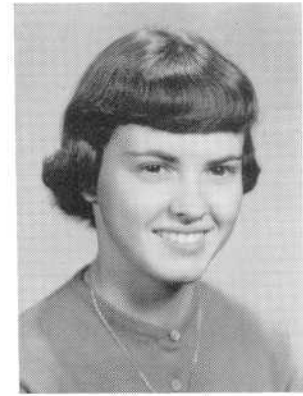


**MARGARET ELLEN McCANN**  
*"Margie"*



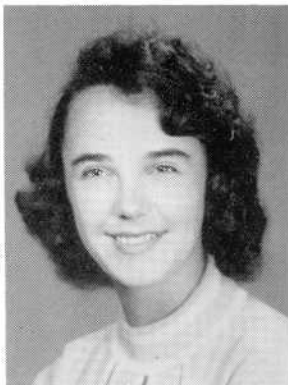
**JANICE McCALLUM**

Class Vice-President 3, 4  
Speakers' Bureau 3, 4  
Sanitation Commission 3  
Home Room Director 3, 4



**JEANNE MARY McCALLUM**

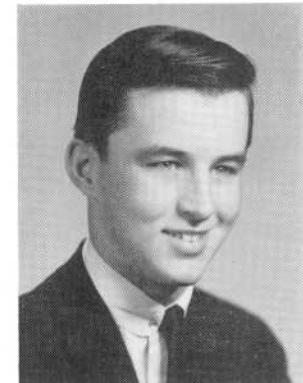
Student Council 3, 4  
Speakers' Bureau 3, 4  
Science Club 4  
Sanitation Commission 4  
Prom Committee 3



**MARGARET McCULLOUGH**

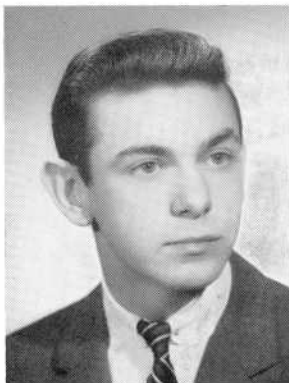
*"Maggie", "Omer"*

Silvertones 4  
Senior Mixed Chorus 3, 4  
Glee Club 2, 3, 4



**JOHN BARRY McDONALD**

Football 2, 3, 4  
Varsity Club 4  
Basketball 2, 3  
Track 2  
Prom Committee 3



**FRANCIS DOUGLAS McKENZIE**

*"Frank", "Butch"*

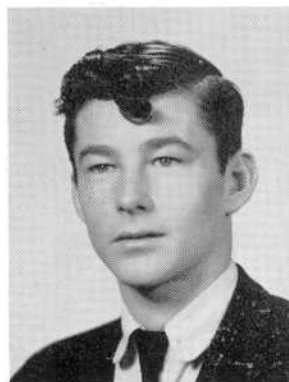
Home Room Director 1



**JANICE MARY McLAUGHLIN**

*"Janie"*

Commercial Club 3  
President 4  
National Honor Society 3, 4  
Record Book Typist 4  
Office Aide 3, 4



**JOHN EDWIN McQUEEN**

*"Zigger"*



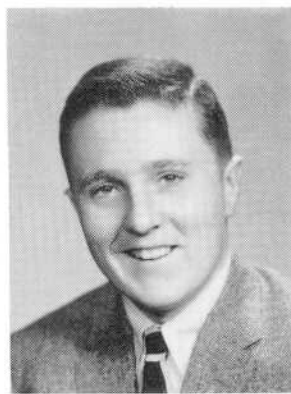
**CELIA ANN MACEK**

Commercial Club 3



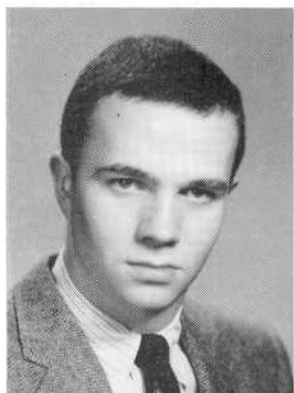
**CARMELIA DALUZ MACHADO**

Portuguese Club 2, 3, 4  
Glee Club 2, 3



**RONALD JAMES MacINDOE**

*"Mac"*



**DONALD GILMORE MAGEE**

*"Don", "Gilmore"*

Glee Club 2, 3  
Senior Mixed Chorus 2  
Home Room Director 2



**FRANK JOSEPH MAHER**

Home Room Director 4



**BARBARA ANN MAITOZA**

*"Barb"*

Commercial Club 4  
Girls' Numeral Club 2, 3, 4  
Senior Mixed Chorus 3  
Glee Club 2, 3  
Gym Leader 4  
Basketball 3, 4



**DOROTHY R. MALTAIS**

*"Dot"*

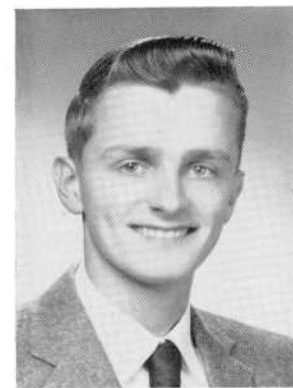
Library Aide 2, 3  
Basketball 2  
World History Club 2, 3  
Home Room Director 2, 3  
Glee Club 1, 2, 3  
Prom Committee 3



**LOIS MANCHESTER**

*"Blondie"*

Glee Club 2, 3

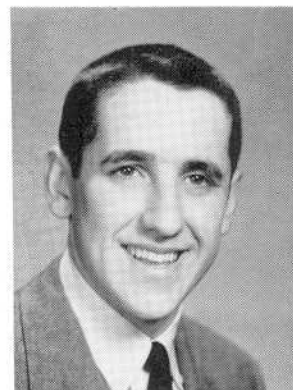


**RONALD HENRY MANCHESTER**



**PAULINE CLAIRE MANNING**

Glee Club 2, 3, 4  
Portuguese Club 2, 4  
National Honor Society 3, 4



**PAUL JOSEPH MARCILLE**



**JEROME DOMONIC MARQUES**

*"Jerry"*

National Honor Society 3, 4  
Orchestra 2, 3  
Portuguese Club 2, 3, 4  
Commercial Club 3  
Traffic Squad 2, 3, 4  
Speakers' Bureau 3, 4

**ROSALIE MARTIN**

*"Ro"*

Basketball 2  
Office Aide 4

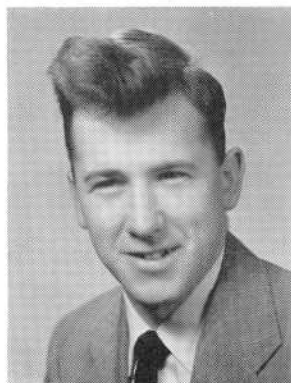


**JACQUELINE MARIE MATHIEU**

*"Jackie"*

Glee Club 2  
Volleyball 2

**VERONICA MATTOS**

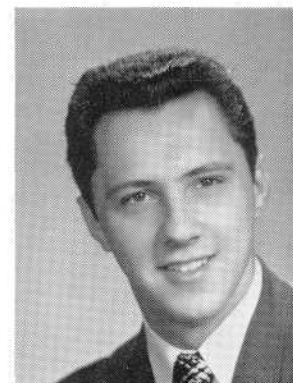


**JOHN HOWARD MAYO**

*"Lem", "Mayo", "Smith"*

Home Room Director 3

**DENNIS MEDEIROS**







**JANICE A. MEDEIROS**

*"Jan", "Jany"*

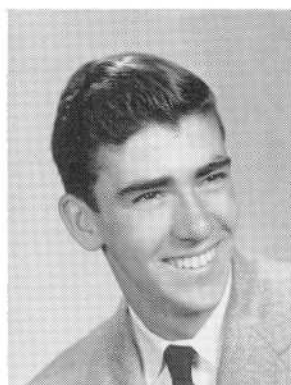
Portuguese Club 2, 3, 4  
Basketball Captain 2  
Glee Club 3  
Volleyball 1, 2, 3



**JOHN FRANCISCO MEDEIROS**

*"John F."*

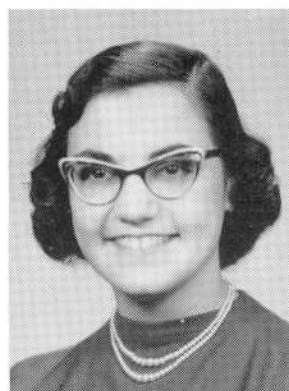
Dramatic Club 2, 3, 4  
National Thespian Society 4  
World History Club 2



**JOSEPH CABRAL MEDEIROS**

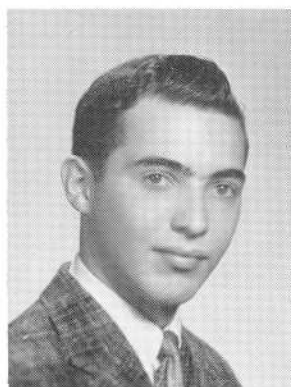
*"Joe", "Jole", "Joey"*

Home Room Director 3, 4  
Glee Club 2  
Hilltop Serenaders 2  
Chess Club 2  
Golf 3, 4



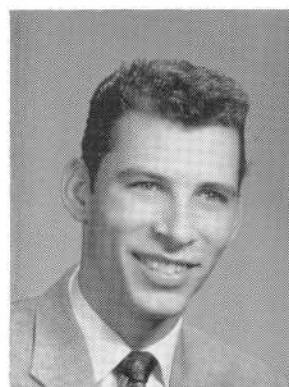
**MARY H. MEDEIROS**

Health Council 4  
Commercial Club 3, 4  
Portuguese Club 2, 3, 4  
Glee Club 2, 3



**ROLAND A. MEDEIROS**

*"Rolly", "Madashe"*



**GERALD ARTHUR MELANSON**

*"Jerry"*



**BARBARA MELLO**

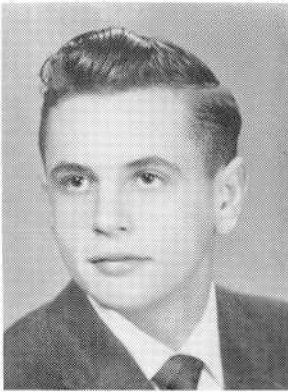
National Honor Society 3, 4  
Library Aide 2  
President 4  
Vice-President 3  
Home Room Director 1, 4  
Health Councillor 3



**EDWINA MARIE MELLO**

*"Dwin", "Winnie"*

Mixed Chorus 4  
Portuguese Club 2  
Glee Club 2, 3, 4



**GEORGE M. MELLO**

*"Georgie"*

Home Room Director 2



**JOYCE MARIE MELLO**

*"Crocker Doll"*

Noonday Music 4

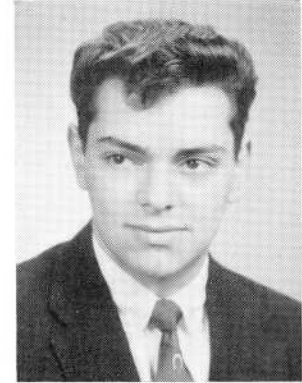


**MARGARET CAROLYN MELLO**

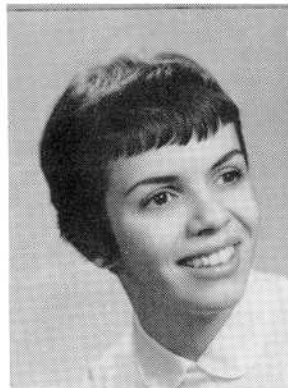
*"Peggy", "Margie"*

Portuguese Club 2

Glee Club 2, 3, 4



**RAYMOND MELLO**



**VIVIAN ELEANOR MELLO**

*"Viv"*

S.A.A. Secretary 2

Vice-President 3

President 4

Cheerleader 3, 4

Home Room Director 2, 3

National Honor Society 4

**MICHAEL STEVEN MENDELL**

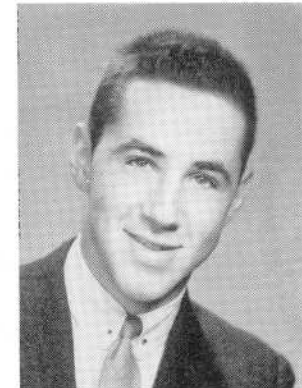
*"Mike"*

German Club 2, 3, 4

Science Club 4

Tennis 2, 3, 4

Prom Committee 3

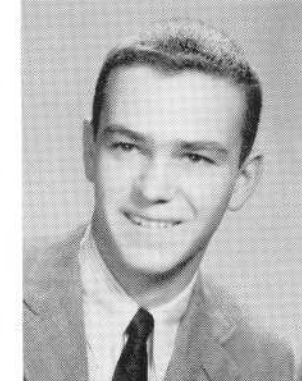


**PETER AUGUST MERSEY**

*"Pete"*

Football 3, 4

Varsity Club 4



**NORMAND ARTHUR MIVILLE**

*"Mick"*

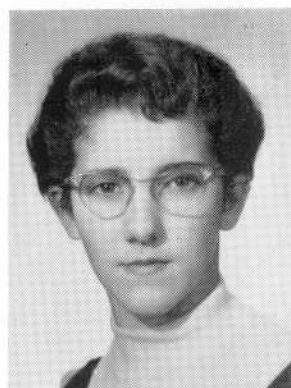
Health Council 2



**KATHLEEN ANN MONAHAN**

*"Kathy"*

Home Room Director 1  
Camera Club 2  
Glee Club 2, 3  
Basketball 2  
Volleyball 2



**CAROLINE CATHERINE MORANGO**

*"Carrie"*

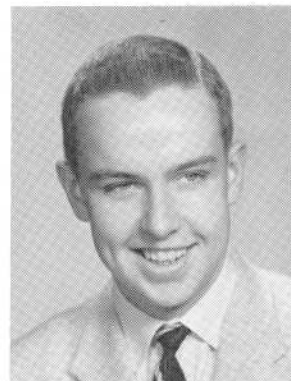
Glee Club 2, 3  
Portuguese Club 2  
Commercial Club 4



**MARGARET MARY MOREAU**

*"Margie"*

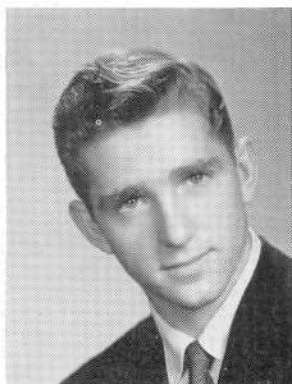
National Honor Society 4  
Commercial Club 3, 4  
Record Book Typist 4  
Office Aide 4  
Glee Club 3  
Softball 2



**ROBERT EDWARD MORRIS**

*"Bob"*

Science Club 3, 4  
Football 4  
Spanish Club 3  
Mathematics Club 3  
Health Councillor 1



**BARRY FRANCIS MOSS**



**IRENE MURRAY**

Cafeteria 2, 3, 4  
Basketball 2



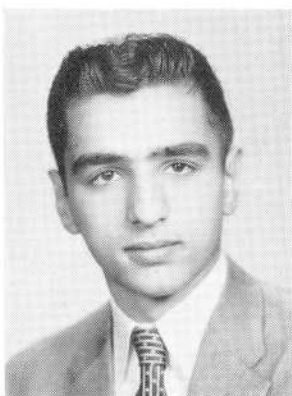
**KENNETH MURRAY**



**RAYMOND ROLAND NADEAU**

*"Ray"*

Science Club 4  
World History Club 4  
Prom Committee 3



**MANUEL NARCISO**

*"Cisco"*

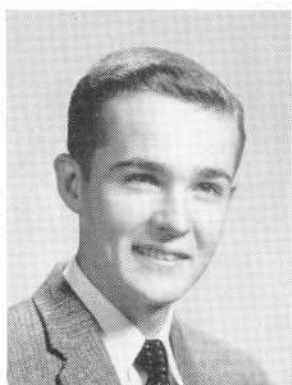
Commercial Club 4  
Health Council 4



**MARGARET MARY NAWROCKI**

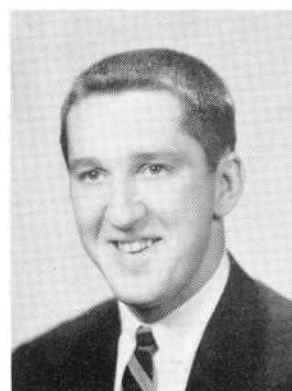
*"Marg"*

National Honor Society 3, 4  
Class President 2, 3, 4  
Cheerleader 3, Head 4  
Student Council 2, 3, 4  
Mathematics Club 2, 3, 4  
Speakers' Bureau 2, 3, 4



**FREDERICK ELLIS NEWTON**

*"Newt", "Fred"*



**JOHN EDWARD NEYLON**

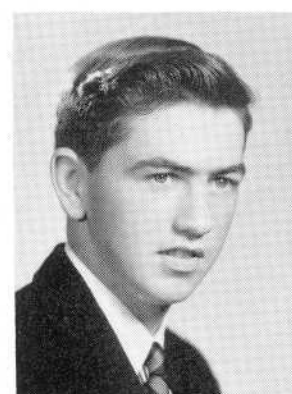
*"Bevo"*

Baseball 1  
Basketball 2  
German Club 2

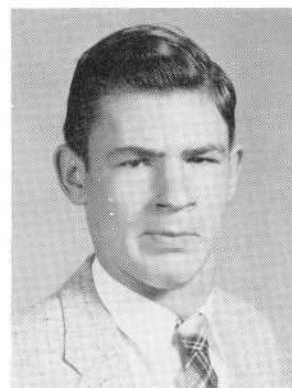


**MARGARET S. NORTON**

*"Peggy"*



**JOHN PATRICK NOLAN**



**FREDERICK PAUL NOWAK**

*"Fred"*

German Club 2, 3



**BARBARA THERESA NUNES**

*"Bobby"*

Portuguese Club 2



**JOHN HENRY O'BRIEN**

*"O'B"*

Baseball 2, 3, 4  
Varsity Club 3, 4  
Baseball 1



**AMELIA ANTONIA OLIVEIRA**

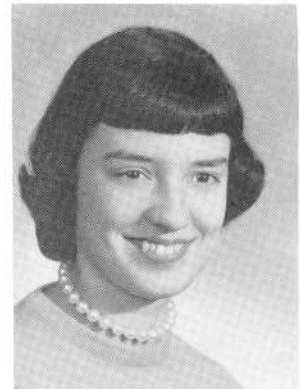
Library Aide 2, 3, 4  
Portuguese Club 2, 3  
French Club 3  
National Honor Society 4



**JOHN OLIVEIRA**

*"Ollie"*

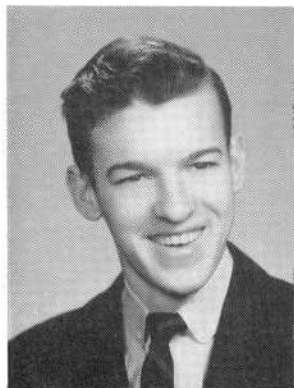
Varsity Club 4  
Student Manager 3, 4



**LORRAINE OLIVEIRA**

*"Lorry"*

Portuguese Club 2, 3  
Commercial Club 4  
Glee Club 1, 2, 3, 4



**ROBERT EDWARD OLIVEIRA**

*"Bob"*

Hiltop Serenaders 2, 3, 4  
Senior Mixed Chorus 2, 3, 4  
Glee Club 2, 3, 4



**JUDITH ANN ORMEROD**

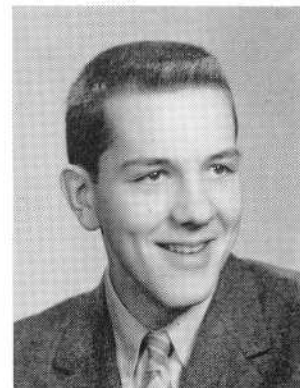
*"Judy"*

Spanish Club 3  
President 4  
Library Aide 4



**AARON JOEL OSTROFF**

National Honor Society 4  
Home Room Director 2, 3, 4  
Mathematics Club 3, 4  
Science Club 4  
Basketball 1, 2  
Guidance Aide 2



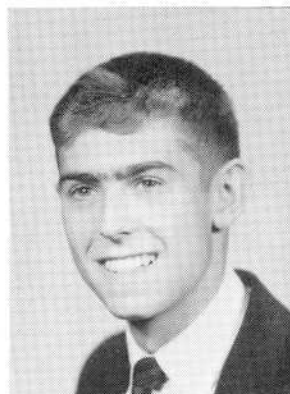
**DONALD OUELLETTE**

*"Don"*





**JOHN PACHECO, JR.**  
*"Galoopi"*



**STANLEY SUMNER PAINE**  
*"Stan"*

Football Assistant Manager 2  
 Manager 3, 4  
 Varsity Club 3, 4



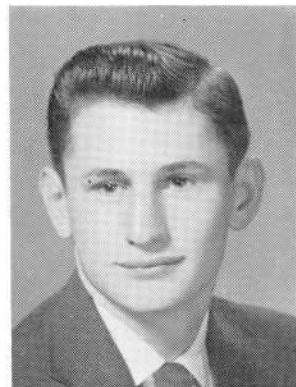
**KENNETH A. PALMER**  
*"Kenny"*

Tennis 2, 3, 4  
 Basketball Manager 2, 3, 4  
 Varsity Club 3, 4  
 Mathematics Club Secretary 2  
 Spanish Club 2



**MARGARET JOYCE PANCHLEY**

*"Peggy"*  
 National Honor Society 4



**HENRY F. PANKOWSKI**

*"Hank"*  
 Traffic 3, 4



**ANNETTE CLARE PAQUIN**

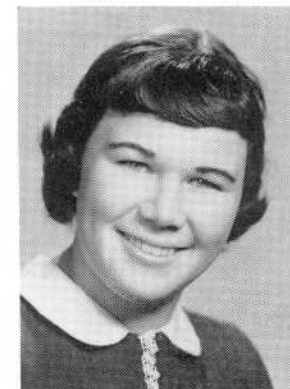
National Honor Society 3, 4  
 Commercial Club 3, 4  
 Cafeteria 2, 3, 4

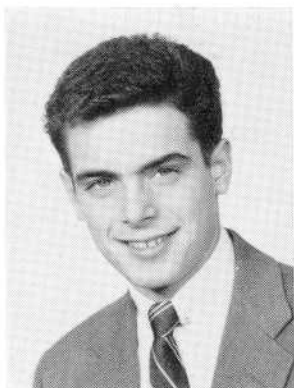


**HENRY PARTRIDGE**

**MARY PATRICIA PASTUCK**

*"Mae"*  
 Cafeteria 2, 3  
 Dramatic Club 4  
 Bank Cashier 3  
 Basketball 2  
 Commercial Club 3





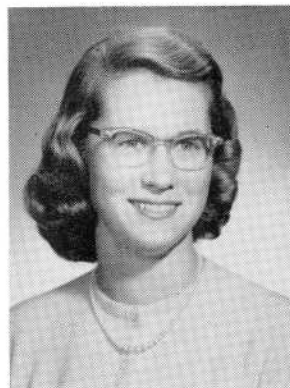
**DONALD V. PAULINO**

Classical Club 3

**JANET ELAINE PAYER**

*"Jan"*

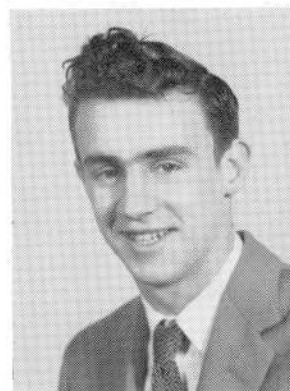
National Honor Society 4  
Record Book Typist 4  
Office Aide 4  
Commercial Club 4  
Glee Club 3, 4  
Basketball 2



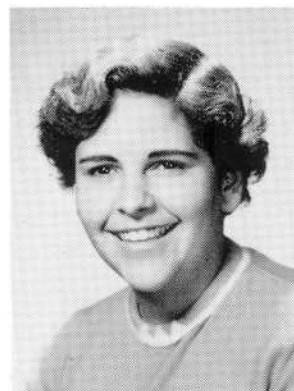
**MARILYN ANN PEIXINHO**

*"Mal"*

Commercial Club 4  
Glee Club 2, 3, 4  
Portuguese Club 2, 4  
National Honor Society 4

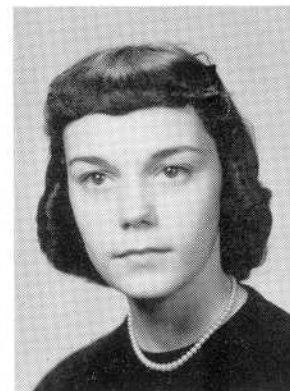


**GERALD RONALD PELOQUIN**



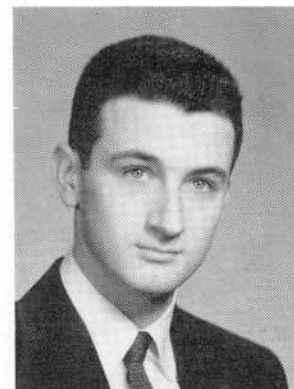
**EILEEN PEREIRA**

Portuguese Club 3  
Glee Club 2  
Piano Accompanist 2, 3



**HELENA LOUISE PEREIRA**

Numeral Club 3, 4  
Basketball 3, 4  
Gym Leader 3, 4  
Volleyball 2, 3, 4  
Bowling 3  
Hilltop Staff 4



**PAUL EMILE PETIT**

Camera Club 3, 4  
Audio-Visual Aide 3, 4

**MURIEL E. PHENIX**

*"Moe"*

National Honor Society 4  
Majorette 3, 4  
Commercial Club 3, 4  
Basketball 2, 3, 4  
Home Room Director 1, 2  
Numerical Club 2, 3, 4





**EDWARD A. PHILLIPS**

*"Flip" "Ed"*

Office Aide 2



**ELAINE MAY PICHE**

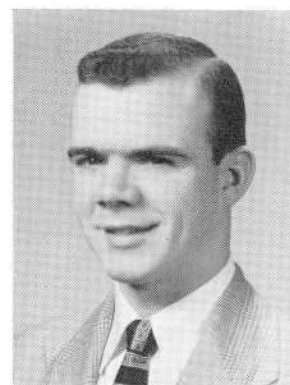
*"Pich"*

Sanco 2  
Dramatic Club 2  
Commercial Club 3  
Health Club 3  
Basketball 2  
Glee Club 2



**CAROLE J. PIERCE**

World History Club 4  
Science Club 3, 4

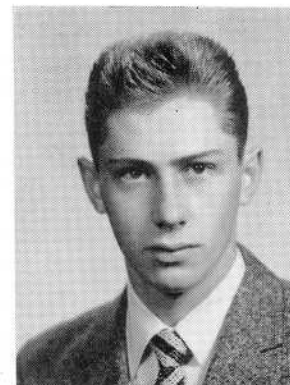


**DANIEL PINGLEY**

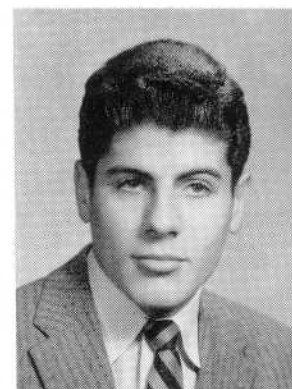


**RUTH M. PIRES**

Commercial Club 3  
Camera Club 1  
Glee Club 2

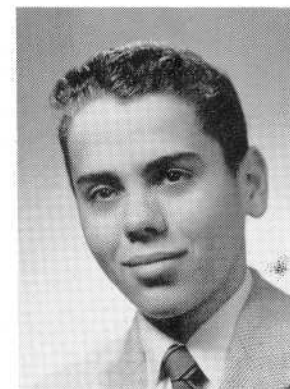


**ROLAND POITRAS**



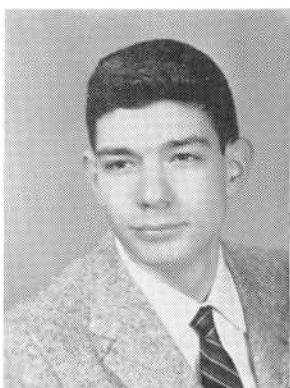
**RICHARD GEORGE POIRIER**

Band 1, 2, 3, 4  
Orchestra 2, 3, 4  
All-State Orchestra 2, 3, 4  
Science Club 4  
Secretary of Class 1  
Health Councillor 2



**ROBERT DENNIS POIRIER**

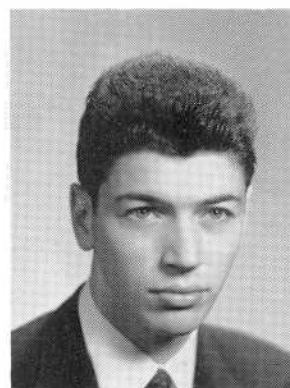
Science Club 4  
Band 2, 3, Librarian 4  
Orchestra 1, 2, 3, 4  
All-State Orchestra 3  
Home Room Director 2



**JAY LAWRENCE POLLEN**

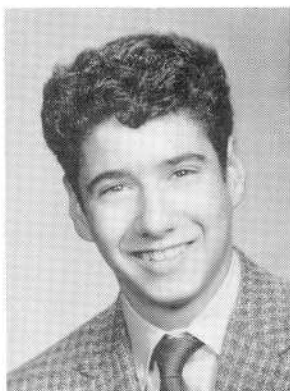
*"Larry"*

Orchestra 3  
String Quartet 3  
Tennis 3  
Varsity Club 2



**ROBERT JOSEPH PONTES**

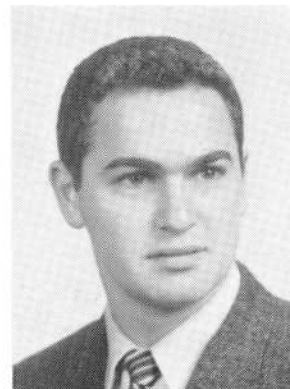
*"Bob"*



**LEONARD PONTIFF**

*"Lenny"*

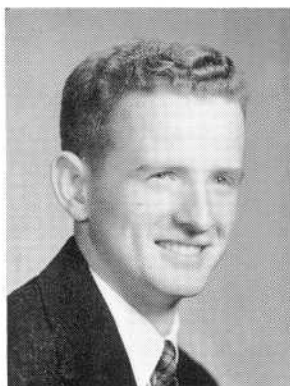
Portuguese Club 2, 3



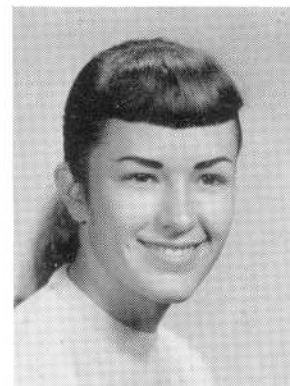
**SIDNEY J. PORITZ**

*"Sid"*

Tennis 2, Captain 3, 4  
State Championship Tennis Team  
Varsity Club 3, 4  
Science Club 3, 4  
Mathematics Club 4

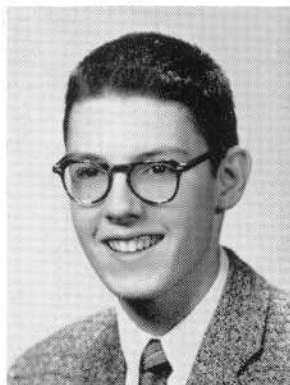


**FRANCIS POWELL**



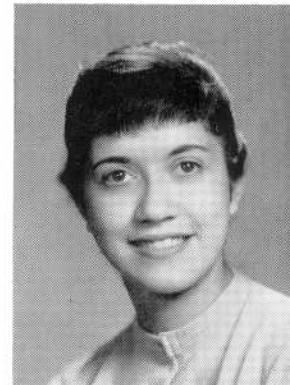
**JOYCE ELAINE PUSZ**

Commercial Club 4



**JAMES STERLING RAGSDALE**

German Club 4  
Chess Club 4  
Mathematics Club 4  
Science Club 4  
Camera Club 4



**ADELINA RAMOS**

Commercial Club 3, 4  
Glee Club 2  
Basketball 2  
Volleyball 2  
Dramatic Club 2  
Portuguese Club 2, 3



**DONALD PARKER RAY**

*"Don"*

Football 3, 4  
Basketball 3, 4  
Baseball 3, 4  
Track 3, 4  
Varsity Club 3, 4



**DAVID REBACK**



**H. GLENN REED**

*"Red"*

Science Club 4  
Camera Club 2, 3



**DALE ANN REGO**

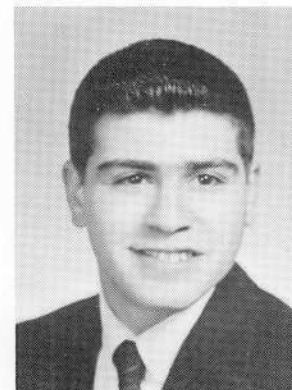
World History Club 4  
Office Aide 4



**GERALD JOSEPH REGO**

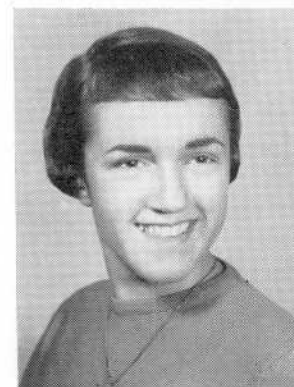
*"Jerry"*

Portuguese Club 2, 3



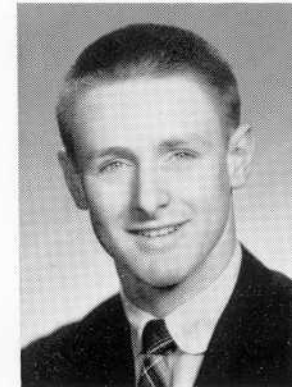
**CHARLES J. RICHARD**

*"Chazz"*



**LYNNE ELAINE RILEY**

National Honor Society 3, 4  
Hiltop, Editor 4  
Mathematics Club 2, 3, 4  
Home Room Director 4  
Spanish Club 3, 4  
Prom Committee 3



**ERNEST R. ROBERTSON**

*"Ernie"*





**DORIS ROBIDOUX**

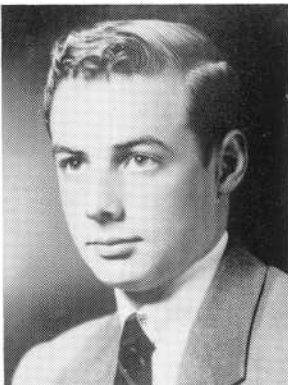
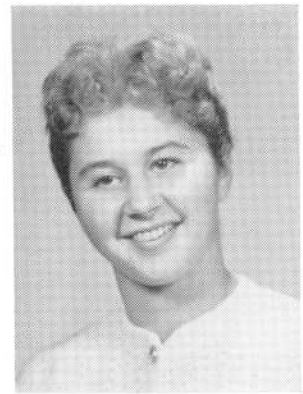
*"Dot"*

Basketball 2, 4  
 Numeral Club 3, 4  
 Gym Leader 3, 4  
 Volleyball 2, 3, 4  
 Softball 2, 3

**ARLENE MARIE ROBINSON**

*"Blondie"*

Silvertones 4  
 All-State Chorus 4  
 Basketball 2  
 Glee Club 1, 2, 3, 4  
 Mixed Chorus 3, 4  
 Volleyball 2

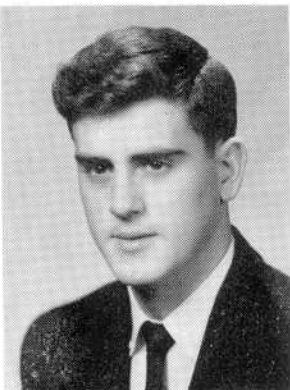


**JOSEPH RODRIGUES**

*"El Torro"*

**MARIE RODRIGUES**

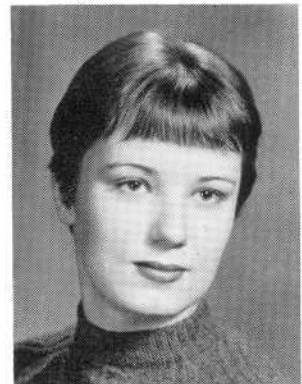
Cafeteria 2, 3, 4  
 World History Club 2, 3, 4  
 Portuguese Club 3, 4  
 Library Aide 4  
 National Honor Society 4



**ROBERT DONALD ROGERS**

*"Bob"*

**ROBERTA ROGERS**



**DONALD ANDREW ROTENBERG**

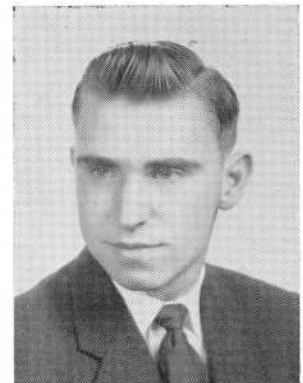
*"Don"*

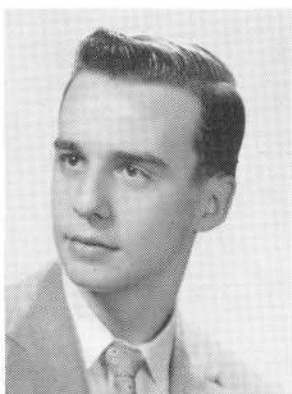
Science Club 4  
 Mathematics Club 3, 4  
 German Club 2, 3, 4  
 National Honor Society 4

**ROBERT ALBERT ROY**

*"Bob"*

World History Club 2

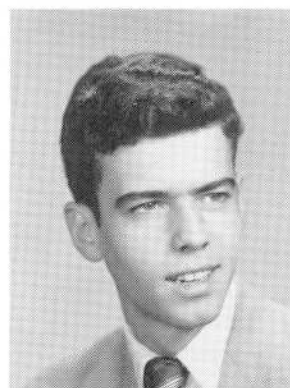




**HENRY ST. LAURENT**

*"Saint"*

**THOMAS ST. MICHEL**



**JOAN L. ST. PIERRE**

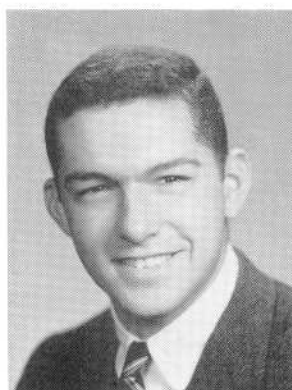
*"Frenchie"*

Numerical Club 2, 3, 4  
Basketball Manager 3  
Volleyball 2, 3, 4  
Gym Leader 3, 4  
Softball 2, 3  
Referee 3, 4

**BARBARA ANN SAKELL**

*"Babs"*

Commercial Club 3  
Cafeteria 4



**THOMAS MICHAEL SALVO**

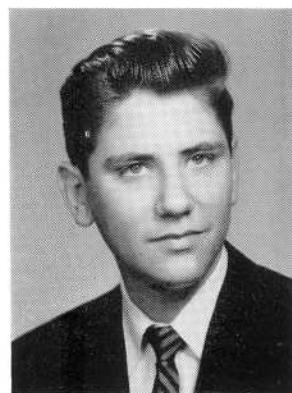
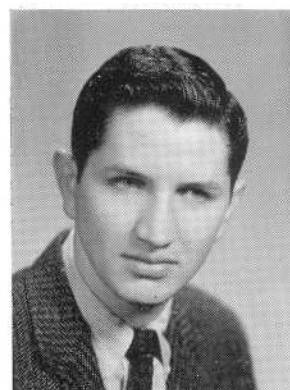
*"Tank"*

Football 1, 2, 3, 4  
Track 2, 3, 4  
Varsity Club 3, 4  
Home Room Director 1

**LOUIS SANFT**

*"Louie"*

Home Room Director 2, 3, 4  
Record Book Asst. Bus. Mgr. 4  
Portuguese Club 3, 4  
Mixed Chorus 2  
Hilltop Serenaders 2  
Glee Club 2



**JOHN SANTO CHRISTO**

*"Johnnie"*

Commercial Club 4

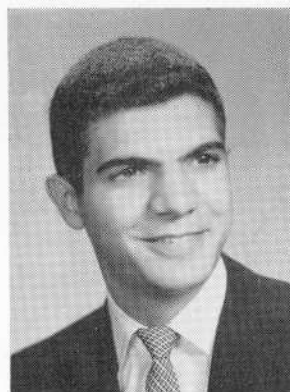
**LUIZA SCHWARTZ**

National Honor Society 3, 4  
Classical Club 3, 4  
Speakers' Bureau 3, 4  
Glee Club 2





**WILLIAM SENAY**



**KENNETH ANTHONY SHAKER**

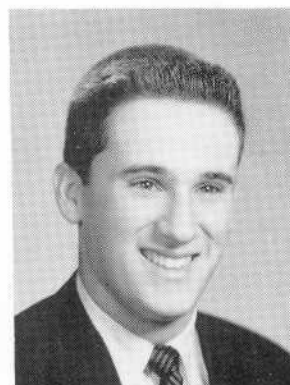
*"Sahugo"*

Assistant Manager, Football 4  
Varsity Club 4



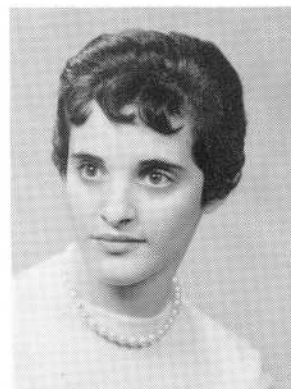
**CLAIRE SHANNON**

Glee Club 2  
Classical Club 4  
Noonday Music 3



**JACK LEE SHAPIRO**

Football 3, 4  
Varsity Club 4  
Serenaders 2, 3, 4  
Glee Club 2, 3  
Mixed Chorus 2, 3



**LOUISE ELLEN SHAPIRO**

*"Lou"*

National Honor Society 3, 4  
French Club Sec. 3, Pres. 4  
Mixed Chorus 3, Accompanist 4  
Glee Club Accompanist 2, 3  
World History Club 2, 3, 4  
Literary Club 3, 4, Sec. 3



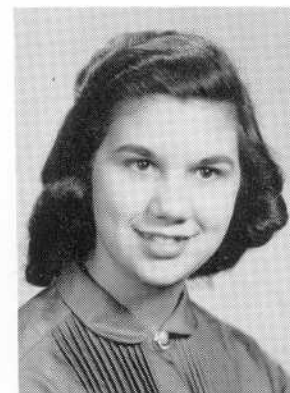
**PAULINE S. SHARPLES**

Glee Club 2



**JOSEPH JOAQUIM SILVA, JR.**

Commercial Club 3, 4  
Portuguese Club 2, 3, 4



**DOLORES SILVIA**

*"Del"*

Glee Club 2, 3, 4  
Portuguese Club 2, 3, 4  
Numeral Club 3, 4  
Gym Leader 3, 4  
Basketball 2, 3  
Volleyball 2, 3



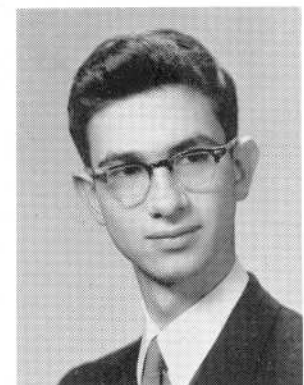
**PAULA H. SLUDSKY**  
Hilltop Staff 4  
Home Room Director 3  
Glee Club 2



**ARTHUR EDWARD SMITH**  
*"Smitty"*  
Band 2, 3, 4  
Orchestra 2, 3, 4



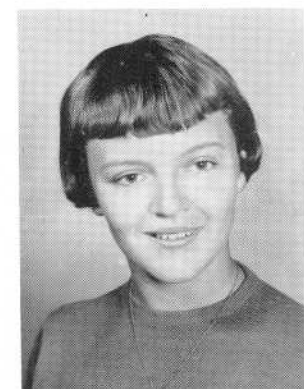
**BARBARA JANE SMITH**  
*"Barb" "B.J." "Smitty"*  
Office Aide 3



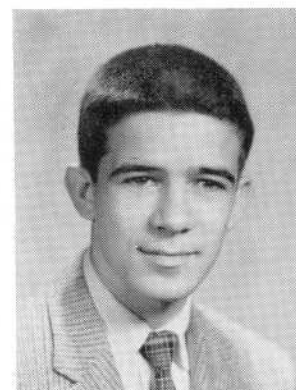
**DAVID SMITH**  
National Honor Society 3, 4  
Science Club 4



**HERBERT BRADLEE SMITH**  
*"Brad"*  
Football 3, 4  
Varsity Club 4  
Orchestra 2



**MALINDA ANN SMITH**  
Sanco Vice-President 4  
Health Councillor 4  
Science Club 3  
Mathematics Club 2, 3, 4  
Glee Club 2, 4  
Basketball 2



**CHARLES LIONEL SOARES**  
*"Charlie"*



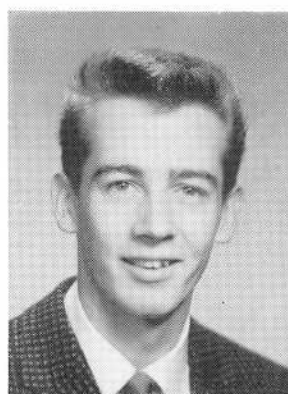
**ELEANOR MARY SOUZA**  
*"Ellie"*  
Glee Club 2  
Bank Cashier 4  
Noon Day Music 4



**HELEN SOUZA**

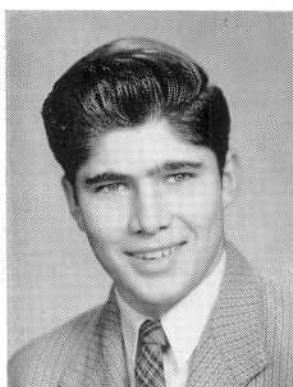
*"Susie"*

Commercial Club 3, 4  
Camera Club 2  
Basketball 2  
Volleyball 3



**PHILIP M. SOWA, JR.**

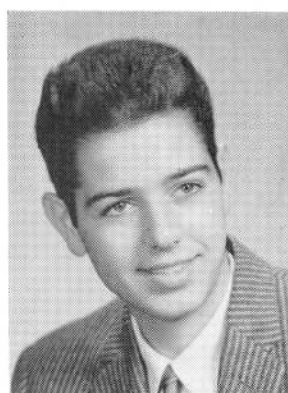
*"Phil"*



**NEIL McLEAN SOWERSBY**

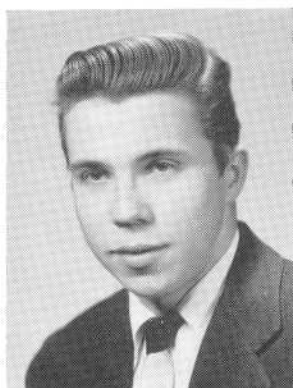
*"Sow"*

Golf 2, 3, 4



**CARL BENSON SPIVEY**

Camera Club 2, 3, 4  
Audio-Visual Aide 2, 3, 4  
Science Club 4  
Mathematics Club 2  
Glee Club 2, 3  
Mixed Chorus 3



**CHARLES M. SPRINGER**

*"Chuck"*



**EDWARD JAMES SPRINGER**

*"Ed"*

Traffic 2, 3, 4



**BEVERLEY ANN STOCKLINSKI**

*"Bev"*

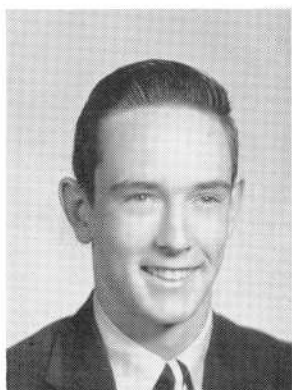
World History Club 4  
Science Club 4  
Glee Club 2  
Basketball 2  
Office Aide 4



**ALICE MARIE SULLIVAN**

Record Book Editor 4  
Speakers' Bureau 3, 4  
World History Club 2, 3, 4  
Prom Committee 3  
Classical Club 3, 4  
Mathematics Club 2, 3, 4





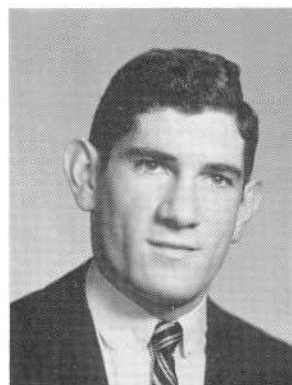
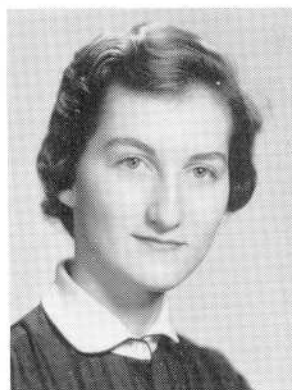
**DANIEL JOSEPH SULLIVAN**

*"Sully"*

National Honor Society 3, 4  
Student Council 2, 3, 4  
Track 2, 3, 4  
Football 2, 3, 4  
Speakers' Bureau 2, 3, 4  
Home Room Director 2, 3

**HELEN MARIE SULLIVAN**

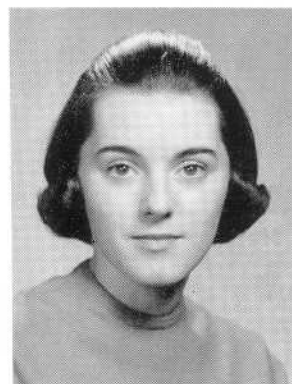
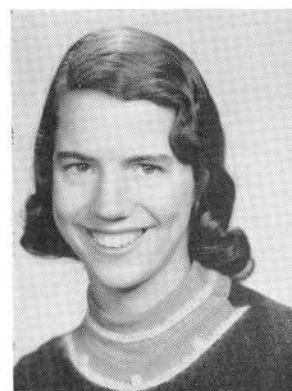
Basketball 2, 3  
Science Club 4  
Mathematics Club 4  
Office Aide 4  
Music Appreciation Club 4  
Classical Club 4



**JAMES PATRICK SULLIVAN**

*"Sully"*

**JOAN SUTCLIFFE**



**JO-ANN ROSE SYNNOTT**

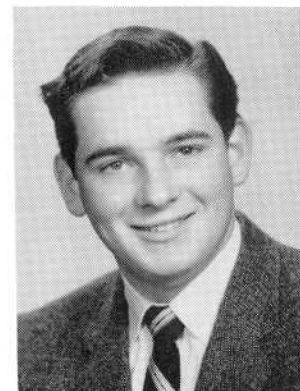
*"Jo"*

World History Club 3, 4  
Spanish Club 3

**LEA M. TALBOT**

*"Lee"*

World History Club 3, 4  
Portuguese Club 2  
Basketball 2  
Softball 2  
Glee Club 1, 2, 4

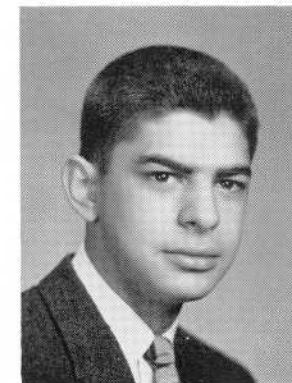


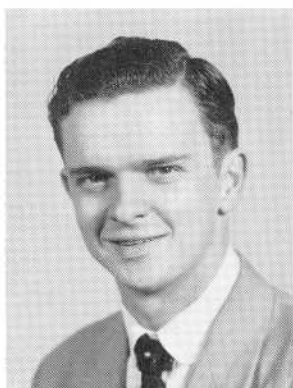
**RALPH TAVARES**

**RAYMOND TAVARES**

*"Ray"*

Band 2, 3





**RODNEY CHARLES TAYLOR**  
*"Rod"*



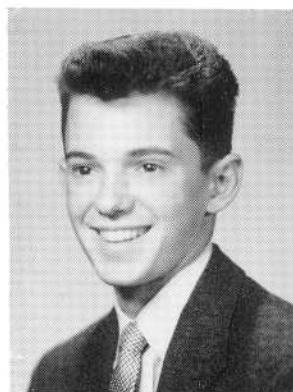
**EILEEN TEIXIERA**  
 Portuguese Club 2, 3, 4



**FRANK M. TEIXEIRA**  
*"Frankie" "Tex"*  
 Basketball 1



**NANCY JOAN THOMAS**  
*"Nan" "Nance"*  
 National Honor Society 3, 4  
 Mixed Chorus 3, President 4  
 Home Room Director 3, 4  
 Silvertones 3, 4  
 Glee Club 1, 2, 3, 4  
 Commercial Club 3



**JOSEPH C. TRAVIS**  
*"Shorty"*  
 Portuguese Club 3, 4  
 Track 2



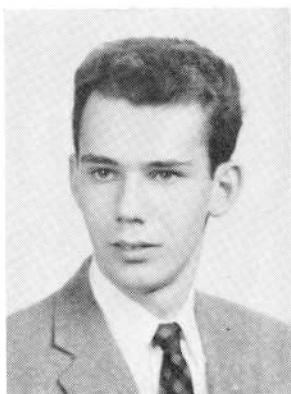
**LEO H. TROTTIER**  
*"Marlon"*  
 Glee Club 2, 3



**NANCY SHIRLEY TURNER**  
*"Nan"*  
 Music Appreciation 3, 4  
 Camera Club 2, 3, 4  
 German Club 2, 3



**LUKE JOHN URBAN**  
*"Topper"*  
 National Honor Society 4  
 Baseball 2, 3, 4  
 Basketball 2, 3, 4  
 Football 2, 3, 4  
 H. R. Director 2, Vice Pres. 3, Pres. 4  
 Varsity Club 3, 4



**JOSEPH VIEIRA VELOZO**

*"Joe"*

Portuguese Club 2, 3  
Basketball 1, 2



**FRANCESCA VENAFRO**

*"Fran"*

Portuguese Club 2  
Glee Club 1, 2



**MALORIE VERROS**

*"Mal"*

World History Vice-Pres. 4  
Science Club 3, 4  
Office Aide 4  
Health Councillor 3  
Basketball 2



**EVELYN MARIE VIERA**

*"Lynn" "Evie"*

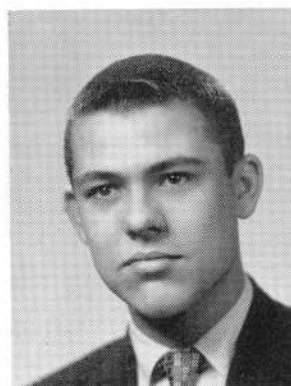
Dramatic Club 2, Treas. 3, Rec. 4  
Thespians 3, Treas. 4  
Home Room Director 4  
Senior Mixed Chorus 3, 4  
Glee Club 2, 3, 4



**LORETTA PATRICIA VIVEIROS**

*"Shorty" "Love"*

Portuguese Club 2, 3, 4  
Basketball Tourney 2



**JAMES ALBERT WALLACE**

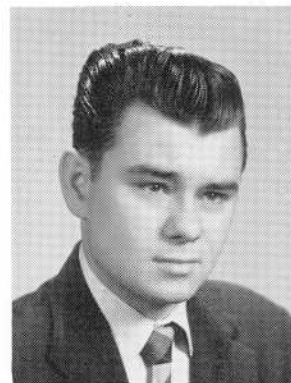
*"Jim"*

Chess Club 4



**CAROL ANN WARDEN**

Classical Club 4  
Music Appreciation Club 4  
Senior Mixed Chorus 3  
Glee Club 2, 3  
Basketball 2



**RICHARD WARHALL**

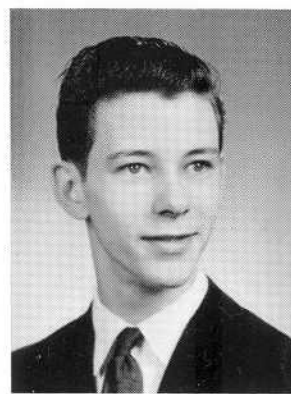
*"Dick"*



**KATHLEEN V. WEBB**

*"Kal" "Kathy"*

Glee Club 2, 3, 4  
Music Appreciation Club 4

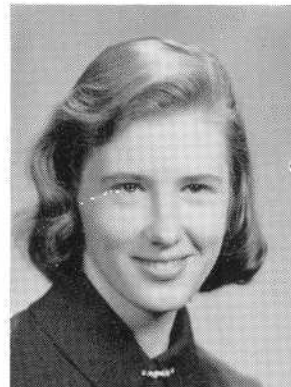


**GEORGE R. WEBSTER**



**ROBERT H. WHALON**

*"Bob"*



**ANN J. WHEATLEY**

World History Club 2, 3, 4  
Office Aide 3  
Basketball 2  
Health Club 1, 2



**JUDITH WHITE**

*"Judy"*

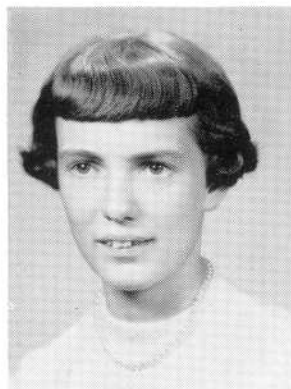
Glee Club 2  
Bank Cashier 3  
Music 4  
Basketball 2, 3  
Volleyball 2, 3  
National Honor Society 4



**JOSEPH JOHN WIESZICKI**

*"Joe"*

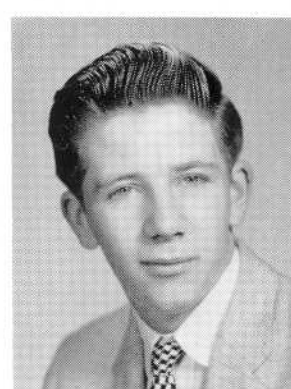
Home Room Director 3



**VALERIE A. WILKINSON**

*"Val"*

Home Room Director 3  
Numeral Club 2, 3, 4  
Gym Leader 3, 4  
Junior Varsity 3  
Volleyball 2, 3  
Softball 2, 3



**ROBERT JAMES WILLIAMS**

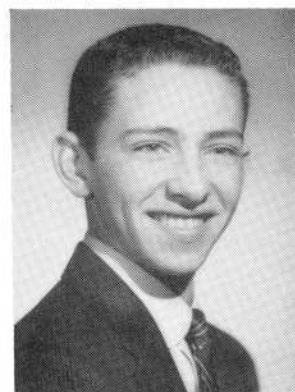
*"Bobby"*



**MARY FRANCES WILLS**

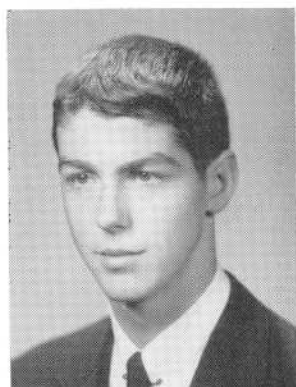
*"Willy"*

Camera Club 1  
Basketball 2  
Noon Time Music 4



**MAURICE JOSEPH WILLS**

*"Maury"*



**FRANCIS P. WILSON**

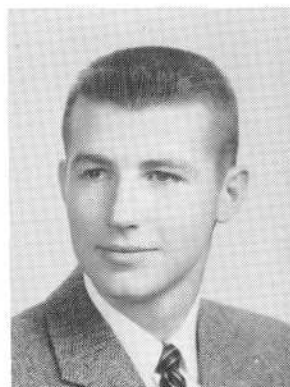
*"Frannie"*

Home Room Director 2

**HAROLD JAMES WILSON**

*"Happy"*

Speakers' Bureau 4  
Mathematics Club 4  
Science Club 4  
Junior Red Cross Council 4  
Home Room Director 4  
Prom Committee 3



**JOANNE E. WOLTMAN**

*"Jo"*

Cheerleader 3, 4  
National Honor Society 3, 4  
Literary Club Vice-Pres. 3, Pres. 4  
Speakers' Bureau 4  
Glee Club 2, 3  
French Club 3, 4



**GENE LUN WONG**

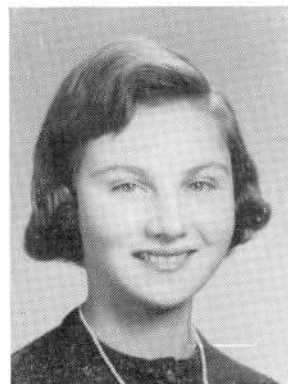


**MARYANN C. WORDELL**

National Honor Society 4  
Numeral Club 2, 3, 4  
Commercial Club 3, 4  
Glee Club 2, 3  
Basketball 2  
Badminton 3

**JANE ELIZABETH ZAWROTNY**

National Honor Society 4  
World History 2, 3, Sec.-Treas. 4  
Sanitation Comm. Sec. 4  
Numeral Club 3, 4  
Classical Club 3  
Health Councillor 4





ELIZABETH AMARAL

EDWARD ARAGAO

PETER BANNISTER

JOSEPH BENEVIDES

JAMES BOSCOE

JOHN BOSCOE

ROBERT BOSCOE

LEONARD BOUCHARD

JOHN BRALEY

DONALD BUCHANAN

ROSEMARY COLLIER

ROBERT J. CORREIA

ROBERT CORSCADDEN

DENNIS CUMMINGS

WILLIAM FAGIOLI

NORINE FALVEY

DENNIS GAGNON

EDWARD GAJOLI

RAYMOND GUIMOND

CORNELIUS HAWES

GEORGE HILL

ALBERT LIMOGÉ

JOHN LUDDY

ANGELA LYNCH

MICHAEL McCANN

WILLIAM McDONALD

CHARLES MARTIN

ALFRED MARTINS

ANTONE MYSLIVY

ALFRED OTIS

ALBERT OUELLETTE

THOMAS PINGLEY

JAMES PONTES

JAMES QUINN

MAURICE RANCOURT

JOHN REDDY

ROBERT REIS

ROBERT REMY

JOSEPH RICHARDS

WILLIAM RODERICK

CAROL ROGERS

ROBERT SOWERSBY

CHARLES SULLIVAN

LEO THORPE

DONALD TIMBERLAKE

THOMAS WILSON

## '53-'54

Entering Durfee in September, 1953, we wondered how long it would take us to be able to find our way around. We soon learned that there's no room 605, however, and in a short time we were at home in our "second home."

Eager to take part in the social activities, we enjoyed ourselves immensely at the Pigskin Hop. During the football season we supported the team and although we lost to New Bedford, we were aware that we still had three more opportunities to win.

In December, elections were held and the freshman class chose Thomas Davis, president; Brenda Medeiros, vice-president; Richard Poirier, secretary, and John Fonseca, SAA councillor.

At the half-way mark Ina Goldberg made the All-A List and many others were on the Principal's List.

With the basketball season under way we again rallied to the support of the Hilltoppers. When Durfee captured the Bristol County crown we made the trip to Boston Garden. Though Durfee was eliminated, two of our own classmates were already showing potential varsity ability in the Freshman League — Russ Gibson and Tom Arruda.

Gibson won a foul shooting contest sponsored by the polio fund committee and was awarded a road trip with the Boston Celtics.

In the spring the annual Varsity Club show was well patronized by our classmates.

Our first year in Durfee was important in shaping our characters and preparing for the years ahead. It was a year of "firsts" for us, but in taking the hurdles as they loomed up before us we gained confidence in ourselves for the three years that stood between us and a diploma.

## '54-'55

In the fall of '54 we noticed many new classmates — newcomers from the junior highs — and Durfee '57 was now at full strength.

The football season was climaxed with a 14-6 win over New Bedford and we were proud that our classmate, Russ Gibson, was awarded a letter.

Class elections brought a complete change of officers. Margaret Mary Nawrocki became our president; Janice McCallum, vice-president; Ann Baraby, secretary; Vivian Mello, SAA secretary; Hannah Cabral and Daniel Sullivan, SAA councillors.

We became active in clubs and enjoyed the school's numerous activities. The Music Department presented "The Christmas Story" and the Dramatic Club, "Hans Brinker and the Silver Skates." In the DDC production of "I Remember Mama," we were delighted to see in the cast classmates Paul Hackett, Pauline Garcia, Helen Klek and Ann Baraby.

Our thoughts turned next to the Eastern Massachusetts Interscholastic Basketball Tournament, in which Durfee participated for the 11th straight year, having tied New Bedford for top Bristol County honors. Though defeated, 63-47, by a strong Quincy quintet, we were proud of the work of Russ Gibson, one of the starting five.

Our class led in Principal's List honors at the end of the third term, 73 of us making the 82-or-over grade required. On the All-A List were Stephen Avramdies, Janice Borges, Irene Cardoza, Marie Corea, Ina S. Goldberg, Janice McLaughlin, Barbara Mello, Carol Rogers, Louise E. Shapiro, Madeline P. Silvia and Marie C. Teixeira.

Durfee and New Bedford shared Bristol County baseball honors, with sophs Tom Arruda and Russ Gibson on the varsity.

## '55-'56

We began our junior year with Margaret Mary Nawrocki, president; Janice McCallum, vice-president; Eleanor Arruda, secretary; Vivian Mello, SAA vice-president; Jeanne McCallum and Daniel Sullivan, SAA councillors.

Names of juniors appeared regularly in the football line-up — Gibson, Andrew, Leary, McDonald, Keeley, Salvo, Bridge, Urban. No wonder we beat New Bedford again!

In dramatics, Ann Curt, Paul Hackett, William Karp and Fred Levy were answering curtain calls.

We became more prominent in clubs, too. John Fonseca was secretary of the band; Madeline Pereira, Commercial Club vice-president; Topper Urban, vice-president-secretary of the home room directors; Lois Hicks, Math Club vice-president; Mary Hammond, GNC secretary; Arthur Smith, Music Appreciation Club vice-president.

In sports, Durfee won the New England basketball championship with juniors Arruda and Gibson among the five starters.

Scholastically, Lynne Riley, Dan Sullivan, Janice McLaughlin, Ina Goldberg, Stephen Avramides and Bessie Jamoulis and many others kept our class prominent. Socially, our Junior Prom was a grand success.

The close of school in June sent us on our last long high school vacation. Only one year remained — THE YEAR — long anticipated, now almost here, an exciting prospect to contemplate during the summer vacation.

## '56-'57

Margaret Mary Nawrocki leads our class as president through the final stage of the journey. We kept our other officers, promoted Viv Mello to the presidency of the SAA, and added Alice Sullivan, editor, and Mary Hammond, business manager, of the Record Book.

Buddy Andrew and Russ Gibson co-captained our football team through a great season, climaxed by a 30-0 win over New Bedford. Andrew was awarded the Jake Reagan Memorial trophy. Gibson, Arruda, Andrew and Urban were basketball starters. The team won the Bristol County championship but lost to Boston College High in the Tech Tournament.

Dan Sullivan represented us in Boston on Student Government Day and Janice McLaughlin was our DAR representative. Senior debate tournament honors went to the team of Geraldine Callahan and Stephen Avramides, with Ambrose Keeley as alternate.

Seventy seniors were inducted into the National Honor Society. We extended our congratulations to Stephen Avramides and Janice McLaughlin, named as the two highest ranking seniors. At the Awards Assembly, many of us received recognition for our work in the school's numerous activities.

As graduation day draws near and the prom and gift committees are making arrangements for the final events of our high school years, we think of the past four years, the friends we made and the good times we had. We thank our teachers for their patience and understanding, promising to make them proud of us in the years ahead.



# ACTIVITIES



## Durfee Hilltop



Vol XXXV.

FALL RIVER, MASS., 1957

No. 5

### ANNUAL JUNIOR PROM TO BE HELD MAY 29

The annual Junior Prom will be held May 29 in Temple Hall, it was announced this week by Miss Edna U. Delahanty, class advisor.

### Dramatic Club to Hold Talent Auditions Soon

The Dramatic Club will soon hold auditions for its T.V. night to be held May 27.

### Music Groups Participate In All-State Festival

Members of the orchestra, band, and glee club attended the All-State Music Festival at Northampton last weekend.

Representing the orchestra were Walter Doraz and Leonard Morris, both viola players. Clarinetists, Antonio Pimental and Kenneth Hillman represented the band.

### Members of Spanish Club Discuss Visit to Museum

Plans for a visit to the Hispanic Museum in New York were discussed at a recent meeting of the Spanish Club. President Judith Ormerod presided.

Any Spanish student who is interested in making the trip with the club

### TRADITIONAL SENIOR COMMITTEES CHOSEN

Senior committees to plan the traditional activities associated with Durfee commencements were announced this week by Miss Katherine L. Hogan, class advisor.

### Senior Debate Students Prepare for Tournament

The Seniors are preparing for the annual debating tournament for 1957. The subject chosen this year is RESOLVED: That Congress grant the request of President Eisenhower for financial aid to Europe.

### Members of Drama Club To Give Christmas Play

"The Panda and the Spy", annual Christmas presentation of the Dramatic Club, will be given in the Tech auditorium Wednesday afternoon at 3 o'clock.

Miss Barbara Wellington, director, is being assisted by Claire LaForest. Tickets may be purchased from members of the club.

### French Club to Present 'Leave It to Suzanne'

The main project of the French Club this year is to stage a play entitled "Leave it to Suzanne" which will be presented to the French department by club members. The club is also planning to do some research on French composers and their music to better acquaint members with them.

### Literary Club Members Elect Two New Officers

Diane Kauffman was elected vice-president and Hannah Cabral, secretary, at a recent meeting of the

### Camera Club Sponsors Photographic Exhibition

The Camera Club has had a display in the library corridor this week which consisted of copies of the winning pictures of last year's Eastman Kodak National Photographic Contest.

### DDC PREPARES PLAY FOR STATE FESTIVAL

Durfee Dramatic Club will present "The Mad Women" as its entry in the Massachusetts Drama Festival, to be held at Beverly March 23, it was announced this week by Miss Barbara Wellington, director.

The cast includes Delia McCarthy, Kathy Curt, Cynthia Cote, William Karp, James Medeiros, Susan Guillette, Rosemary Kazon, Paul Cwiklik, Al Rodrigues, Glenice Gagnon and Claire LaForest.

### Basketball Squad Honored At Hoopsters' Hop in Gym

The Hoopsters' Hop was held Friday night from 8 to 11 in the Tech gym in honor of the basketball players.

In charge of the affair were Vivian Mello, S.A.A. president; Jane DuBiel, S.A.A. secretary; and James Keeley and Carolyn Walsh, sophomore councilors.

### Senior Chorus to Sing Christmas Carols Friday

Following a tradition of many years, the members of the Senior Mixed Chorus will again this year journey through the halls of the school, singing the beautiful carols of the Yuletide

### 'Return to Hollywood' Theme of Varsity Show

The rehearsals for the annual Varsity Club Show are in full swing and

### Reilly-Pollen Debate Team Defeats Rogers Speakers

William Reilly and Kalman Pollen of the varsity debating team won a unanimous decision over the Rogers High School team at Newport last

### PATRONS OF COMEDY ELECT "SWEETHEART"

The "Sweetheart of Durfee Hi" will be selected Thursday night when the Dramatic Club presents "You Can't Take It With You" in the Technical auditorium.

### DDC MEMBERS ATTEND FESTIVAL AT BEVERLY

Eleven members of the Durfee Dramatic Club leave today to attend the Massachusetts Drama Festival to be held at Beverly.

The group will present a cutting from "The Mad Women of Chaillot", which is being directed by Miss Barbara Wellington and assistant William Karp.

### Commercial Club Group Visits Herald News Building

Sixty members of the Commercial Club were taken on a guided tour of the Fall River Herald News Wednesday afternoon.

Greeted by Mr. Dennis Toomey of Herald News business office, the group visited all departments and saw the complete operation of a modern newspaper plant.

### ANNUAL CHRISTMAS DANCE IN TECH GYM

The Christmas Dance sponsored by the Students' Activities Association will be held in the gym tonight with dancing from 8 to 11.

General chairmen are Lucy DuBiel and Martin Duffy, junior councilors; Diane Levesque, SAA vice-president; and Jeanne McCallum, senior councilor.



Left to right, first row: D. Levesque, V. Mello, J. Dubiel. Second row: C. Walsh, B. Medeiros. Third row: M. Nawrocki, N. DuBiel, R. Struminski, L. Urban, D. Sullivan, J. Keeley, M. Duffy, L. Dubiel, R. Massoud.

## STUDENTS' ACTIVITIES ASSOCIATION

The Students' Activities Association, nucleus of all student activities, is the only organization whose membership is open to all students. The Student Council, its governing body, fosters extra-curricular activities and develops school spirit and leadership.

The Council has had a particularly busy and successful year. To orientate freshmen and sophomores, the S.A.A. issued Guide Books in September. Later in the month, a very successful drive for membership was conducted.

The first school dance was the Harvest Hop, and the program of activities continued with the Pigskin Hop and the Thanksgiving Victory Celebration. The Football Banquet in November, held to emphasize the accomplishments of the squad, climaxed the season.

The Christmas season was highlighted by the Christmas Dance. The Mid-Winter Hop began the social activities for the New Year, and was later followed by the Spring Dance.

In May the annual Officers' Banquet was held. The Awards Assembly in June, giving recognition to all school and club officers, closed the year.

S.A.A. officers are President Vivian Mello '57, Vice-President Diane Levesque '58 and Secretary Jane DuBiel '59.

Faculty advisors are Miss Yolande B. Laliberte, Miss Alice C. Harrington, and Mr. Joseph B. D'Adamo. Honorary members are Miss Alice G. Langford, Mr. James F. Conlin and Miss Anne L. O'Neil.



Left to right: A. Boulay, A. Thompson, B. Fragoza, N. Snell, J. Abbott, E. Souza.

## **BANK CASHIERS**

Tuesday is Bank Day at Durfee. On this day students make their bank deposits. Many of them have acquired this very practical habit from grammar and junior high school. On an average Tuesday, Durfee students deposit between \$400 and \$600.

To handle the work entailed, cashiers are needed to receive the numerous deposits. The procedure is quite simple. First, the student makes the deposit in his home room. Together with other deposits they are sent to the Durfee office. Deposits are then called for in an armored car, and then go to the bank.

Mr. George C. Hoar, head of the commercial department, is the advisor for the bank cashiers.



Left to right, first row: A. Boyko, S. Moss. Second row: P. Cwiklik, P. Petit, C. Viveiros, J. Hughes.

## CAMERA CLUB

The Camera Club is composed of students interested in photography who wish to learn the "secrets" that are necessary in order to compose, "snap" and develop a good picture.

Besides stimulating interest in the various phases of photography, the club sponsors a photographic exhibit consisting of prints from the National High School Photographic Awards Contest sponsored annually by the Eastman Kodak Company.

Some of the activities are talks by professional photographers, participation in the student-operated dark room, various seasonal parties, and a combined field trip and outing at the end of the year.

The officers are: Paul Petit, president; Clarence Viveiros, vice-president; Ann Irene Boyko, secretary; Shirley Moss, program chairman; John Hughes, co-chairman. The faculty advisor is Mr. Joseph J. Lawlor.



Left to right, first row: P. Tickle, A. Kuliopoulos, B. Jamoulis, M. Seagrave, C. Desrosiers. Second row: L. Hicks, A. Botelho, J. Ragsdale, H. Wilson, J. Wallace, B. Gouveia.

## CHESS CLUB

Organized in 1954-55, the club has increased its membership considerably in three years. It aims to foster interest in the game and provide facilities for playing.

Membership is open to all interested students. Those who cannot play are taught the fundamentals. Those who can, profit from the experience gained in competition.





Left to right, first row: C. Wocjik, L. Hicks, C. Warden, B. Fischer, H. Sullivan, C. Carvalho. Second row: C. Kwarcinski, M. Kauffman, J. Symons, A. Keeley, N. Woltman, K. Burns, G. Callahan. Third row: M. Lepage, D. Salmond, W. Reilly, H. Kowalski, D. Rotenberg, W. Norton, B. Jamoulis.

## CLASSICAL CLUB

The Classical Club was founded in October, 1955, to foster interest in the language, literature and civilization of ancient Greece and Rome through pleasurable activities. Each meeting includes a talk on some aspect of these topics, sometimes with pictures or movies.

The officers of the club for 1956-1957 are Ambrose Keeley, Jr., Consul (President); Judith Symons, Praetor (Vice-President); and Lorraine Hennessey, Censor (Secretary). The program committee consists of Nan Woltman, Curule Aedile, and Barbara Fischer and Joan Packer, Aediles.

Many members of the class of 1957 have served the club usefully. Among these, Geraldine Callahan was its first Censor and Luiza Schwartz its first Curule Aedile. Jane Zawrotny helped in drafting the Constitution, and Eileen Cabral worked on the Publicity Committee. Barbara Fischer, Lois Hicks, Luiza Schwartz, Charles Ashworth, and Stephen Avramides contributed talks and entertainment on Greek and Roman topics.



Left to right: C. Lund, J. McLaughlin, A. Amadeo.

## COMMERCIAL CLUB

June, 1957, brings to a close many of the various activities of the Commercial Club. A program of exciting and interesting tours was enjoyed by members on the first Wednesday of each month. Beginning with the reception for new members in October until the installation of new officers in June, the club scheduled various tours of widely known business establishments.

In November a bus was chartered for a trip to Bryant College in Providence where members toured the campus, met the faculty, and had refreshments in the women's dormitory.

In December and January members toured the main office of the United States Post Office and the Fall River Herald News, respectively. Tours of the First Federal Savings and Loan Association of Fall River and the Coca-Cola Bottling Company were scheduled for February and March.

In April the members held a "Guest Day." To this social were invited not only speakers of the WAVES, WAFS, WACS, and Marines, but also commercial seniors of Case, Somerset and Westport High School. Boys toured the Latex division of the Firestone Company.

Electricity was discussed when the club members were the guests of the Fall River Electric Light Company at our May meeting.

The June tea for seniors was in honor of the new officers as well as the commercial faculty.



Left to right, first row: S. Silk, M. Sperling, K. Pollen, N. Woltman, A. Levine. Second row: B. Jamoulis, R. Levine, W. Norton, L. Philips, W. Reilly, S. Isenberg, J. Entin, D. Salmond.

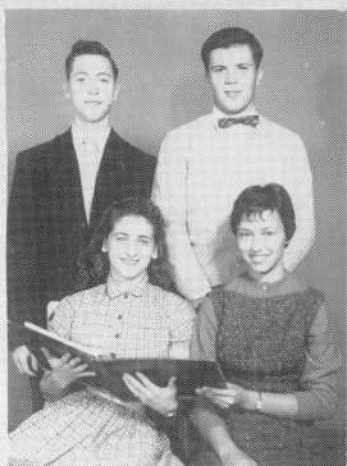
## DEBATE TEAM

The Varsity Debating Team had a new coach this year, Mr. William McIlwaine, teacher of chemistry. Mr. McIlwaine named Douglas Salmond and Adrian Levine to uphold the affirmative and William Reilly and Kalman Pollen the negative. During the year, for the first time in recent years, informal debates were held. These were intended to provide "battle experience" for new members.

One such debate saw Richard Levine, Lee Philips, Sheldon Isenberg and Jeffrey Entin, handle themselves like pros. Durfee debaters were so enthusiastic in putting across their arguments this year that we doubt if the library rostrum can survive another year of pounding.

Good luck to Bessie Jamoulis and Geraldine Callahan. It has been a pleasure having you on our team.

D.D.C. Officers



1956~1957

Thespian Officers



The Panda and the Spy



You Can't Take It With You- Feb. 14



EMERSON COLLEGE  
THEATRE  
BOSTON, MASS.

March 2

Dress Rehearsal



Southern Massachusetts  
DRAMA FESTIVAL  
B. W. C. District High School Full Time, Mass.

March 23

Troupe 254 Silver Anniversary 1932-'57







## DRAMATIC CLUB

YOU CAN'T TAKE IT WITH YOU. No, you can't take with you your life at Durfee but you CAN take the memories, and those of the past year are ones to remember for a long long time.

After a thrilling trip to Indiana University in June, those who returned to Durfee started us off with a bang. After tryouts were held, the membership was brought up to 100. President William Karp conducted the weekly meetings. Our Hallowe'en get-acquainted party gave new and old a wonderful time.

You CAN take with you the memories of our plays: T.N.T., which included "Finders Keepers," "Land of Heart's Desire," and "Sunday Costs Five Pecos." These were student directed by Thespians and resulted in the addition of nine new members, initiated at a banquet November 29. Ann Kathleen Curt is president of the Thespians. On December 19, THE PANDA AND THE SPY delighted a full house of children.

YOU CAN'T TAKE IT WITH YOU, one of America's most rollicking comedies was presented February 14 and at the performance Lucy Dubiel was chosen "The Sweetheart of Durfee Hi." On March 23, we sent an act from THE MAD WOMEN to the Massachusetts Drama Festival held at Beverly High School. Our final performance was the All-Durfee Talent Show celebrating the silver anniversary of the Thespians at Durfee.

You CAN take with you the memories of attending the Little Theatre plays and Mt. St. Mary's "Quality Street" as guests. Besides these activities and many others, we participated in five expeditions to Tufts University, Emerson College and University Club in Boston, and Winchester and Stoughton High Schools.





Left to right, first row: K. Pollen, A. Silvia, D. Salmond, A. Bakst. Second row: R. Levine, S. Silk, L. Shapiro, S. Zangwill, B. Kane. Third row: N. Woltman, L. Crocker, I. Schwartz, L. Hennessey, J. Woltman, R. Frolich, M. Antonio, A. Guillemette.

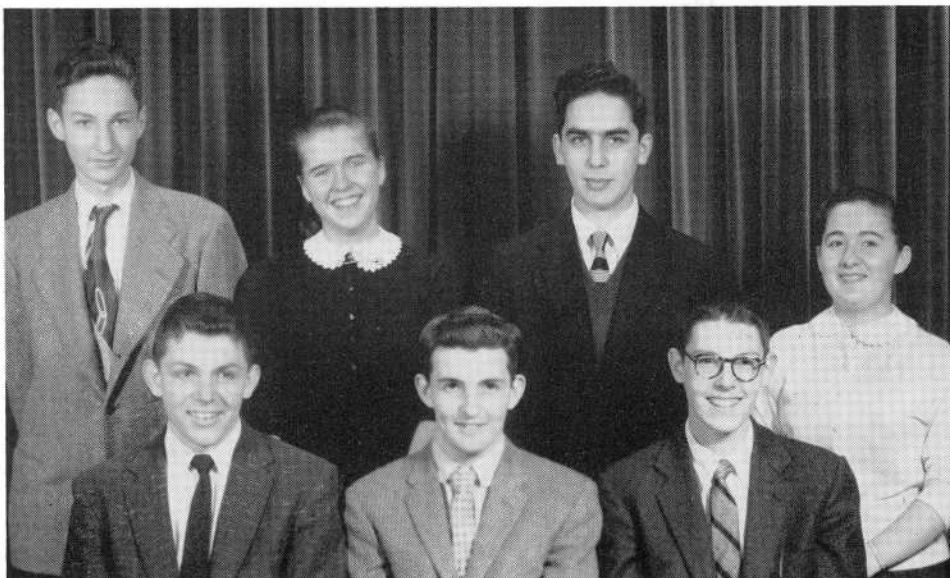
## FRENCH CLUB

The purpose of this organization is to supplement class room work in the cultivation of interest in French culture, art, literature, customs and language. This purpose is achieved through the median of such activities as lectures, games and songs in which the individual members participate under the direction of Arthur Bakst, program chairman.

The French Club, known as Le Cercle Français, is now in its sixth year of existence. As its main project for the year, the club sponsored a play for students of French entitled, "Leave it to Suzanne." This play, under the supervision of the faculty advisor, Mr. Carmi Belmont and of the club officers, President Louise Shapiro, Vice-President Constance Poirier, and secretary Richard Levine, was directed by Maurice Blanchette.

This year the members of the club voted to donate some money to the French Department to be used in the purchase of French films and records by French composers to stimulate an interest in French art and culture among pupils.

The activities of the club were terminated in June at a social given for the members.

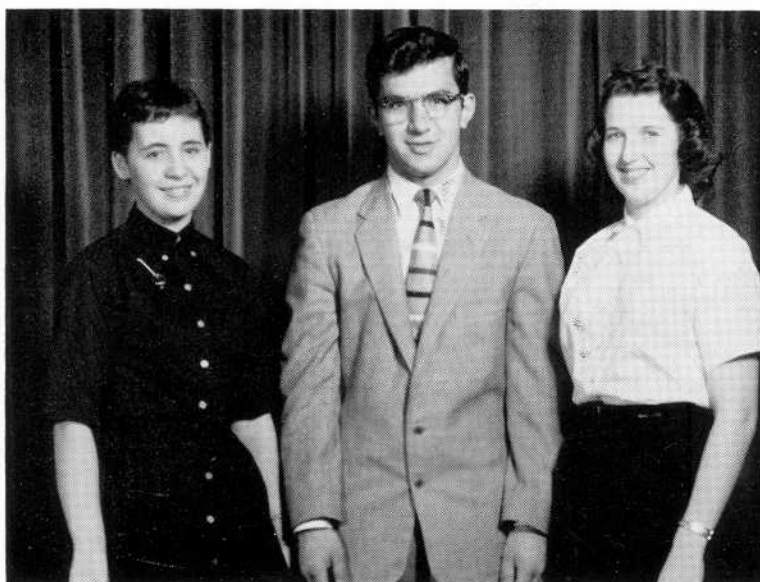


Left to right, first row: R. Racette, D. Salmond, J. Ragsdale. Second row: D. Rachlin, N. Harrison, H. Chafitz, J. Clinton.

## GERMAN CLUB

The German Club held elections in October, 1956, for the 1956-57 school year. Officers elected were President Douglas Salmond, Vice-President Russell Racette, and Secretary James Ragsdale.

Monthly meetings have provided programs such as listening to German records and talks on Germany. A most interesting talk was given to the club by Barbara Fischer, a native of Germany, who talked on German foods. The first Constitution of the club was adopted during the year.



Left to right: E. Arruda, S. Avramides, E. Piche.

## HEALTH CLUB

The Health Club, a sophomore organization, is designed to promote health and sanitation throughout the school.

This objective was reached when the officers conducted one of the most successful campaigns Durfee has experienced. Attractive posters were placed in the hallways and an effective display was set up in the library corridor. The theme was the Heart, and an appropriate assembly was organized with a heart specialist speaking.

The successful outcome of the various activities of the club was made possible through the cooperation and hard work of its officers under the fine supervision of Miss Angelina B. Crispo, faculty advisor.



Left to right, first row: P. Hackett, L. Riley, R. Dorsey, L. Abbott. Second row: H. Pereira, C. Brown, D. Lincoln, P. Sludsky, H. Cabral.

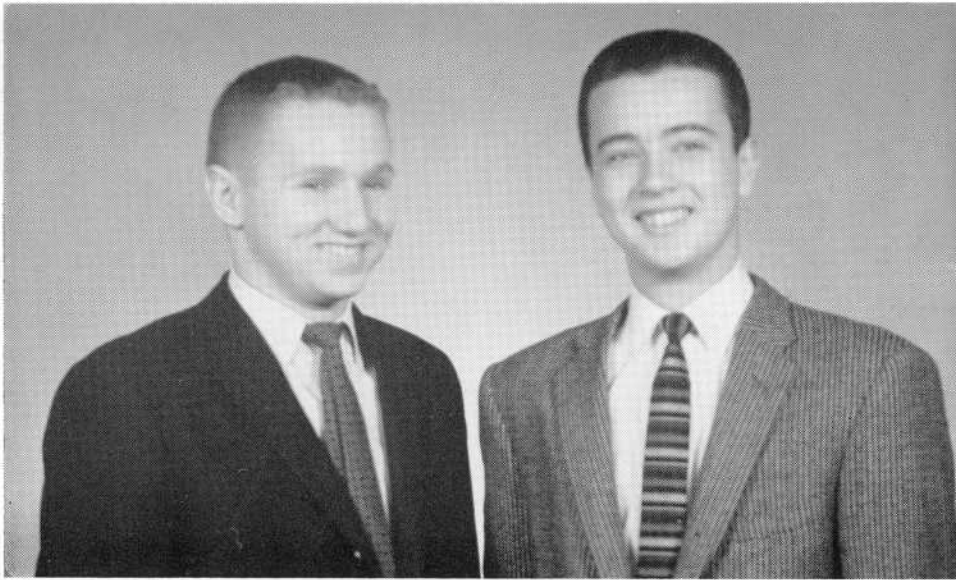
## HILLTOP

The HILLTOP, which has just completed its 35th successful year, is published bi-weekly by the second year journalism students under the guidance of Mr. John T. Crowley, faculty advisor.

By handling the HILLTOP, senior students are given the opportunity to put to good use the journalistic knowledge they gained in their junior year as members of the Journalism I class.

As in past years, the staff has tried to keep the student body informed about important school activities, as well as relating interesting items and expressing editorial opinions that will promote the best interests of the school.

The responsibility for a good paper lies not only in the hands of the writers, but also in the hands of the readers as well. This year, working under the handicap of having only eight senior staff members, the HILLTOP was a completely successful series of publications, because of the interest and cooperation of the students.



L. Urban, E. Lyons

## HOME ROOM DIRECTORS

The largest and most helpful organization of all school activities is the Home Room Directors. The group is made up of a boy and a girl elected from each home room at the beginning of each school year.

These pupils assume the responsibility of sponsoring S.A.A. and Junior Red Cross membership. They also assist in their home rooms by carrying out any duties required by their home room teachers and by presenting all matters of school interest. They also bring to the attention of their classmates matters of outside interest such as the food and clothes collection. In these ways the directors make themselves indispensable.

This year the group has been led by President Luke Urban and Vice-President-Secretary Edward Lyons. Faculty advisor is Miss Mildred V. Carroll.





Left to right, first row—C. Liebman, G. Braz, H. Wilson. Second row: R. Costa, P. Darmody.

## JUNIOR RED CROSS

The Junior Red Cross Council is made up of students of all classes who are interested in helping in any way many worthwhile community-wide projects.

The first major function of the council each year is to conduct the annual three-day enrollment drive. Under the co-chairmanship of Richard Costa and Harold Wilson, more than 1,000 Durfee students became Junior Red Cross members this past fall.

Another Durfee project initiated each fall is the Junior's Aid Program in which many of our girls devote one hour each week doing volunteer work in our local hospitals.

One of our Durfee students, Paul Cwiklik, is in complete charge of "Junior Speaks", a fifteen-minute program heard once each week over a local radio station.

The Red Cross Chapter House is always willing to assist by providing guest speakers and interesting films for the regular meetings, each of which is chairmanned by an officer of the Durfee Council.

The officers are: President Gladys Braz; Vice-President Harold Wilson; Secretary Caroline Liebman; Councillors Patricia Darmody and Richard Costa. Faculty advisor is Mrs. Mary Y. Kostas.



Left to right, first row: T. Nunes, B. Jamoulis, L. Lataif, C. Oliveira, B. Mello, J. Moniz, M. Lyons, K. Burns, A. Guillemette. Second row: R. Cornell, A. Oliveira, M. Rodrigues, M. Fletcher, L. Dubiel, J. Ormerod, N. Alves, N. Ellis, I. Goldberg, R. Thibeault. Third row: W. Reilly, A. Kuliopoulos, C. Deeb, J. Rogers, H. Rudolph, H. Kowalski.

## LIBRARY AIDES

The main purpose of the Library Aides is to render service to the entire student body and to encourage the proper use of the library. Probably the most hectic time of the day for the library aide is the interval of time between 7:50 and 8:10 A.M., for it is then that many books are distributed and returned, and last minute reference work is done. Also library passes are given out.

Included in the group of "pass-getters," are those pupils who have a book report the fifth period and would like to read a book the fourth. We do not cooperate with these pupils. Others wish to do, for the following day, research on an assignment given a whole month before. Consequently, it is quite obvious that the library is of vital importance to everyone.

Duties of the Library Aides also include checking the passes every period, helping a fellow student searching in vain for "Shakespeare's Way," checking the books which are taken out and which are returned, distributing special material to discriminating members of the faculty, and, above all, keeping the library running smoothly and efficiently.

The Library Aides meet once a month, but a special meeting is called occasionally. Early in the year, the members hold an informal gathering in honor of the newly elected members. Our club is exclusive in that it admits only those students who have attained honors on either the All-A or Principal's Lists.

Activities also include the annual observance of Book Week, special projects and displays, a Christmas party, and some form of social gathering as a climax to a successful year.



Left to right, first row: D. Drapeau, D. Kauffman, J. Woltman, H. Cabral, R. Castanho. Second row: J. Gagnon, J. Ayre, L. Shapiro, G. Gonsalves, I. Medeiros, N. Woltman, A. Dion, R. Frolich.

## LITERARY CLUB

Under the expert guidance of Miss Katherine Lomax, this club has broadened its scope tremendously in recent years. Not only was creative writing encouraged but also literary gems by well known authors were discussed at meetings.



Left to right: M. Farrington, L. Hicks, T. Nunes

## MATHEMATICS CLUB

So you think that nineteen minus one is eighteen? On the contrary, the answer can truthfully be *twenty*, as members of the Mathematics Club could tell you.

The purpose of the club is to foster an interest in phases of mathematics which are not generally considered in the classroom. Membership is open to all sophomore, junior and senior students who have had at least one year of algebra. Meetings are held once a month when an invited speaker or club member presents a program of interest to the group.

The club's activities during the current year were highlighted by a display in the library corridor, composed of projects prepared and submitted by members, and the annual mathematics tournament in April, from which the four highest scoring contestants were chosen to participate in state-wide competition.

Mr. Joseph B. D'Adamo, faculty advisor, did his usual fine job of guiding the organization through another successful year.



Left to right, first row: N. Thomas, N. Harrison, D. McCarthy, B. Fischer.  
Second row: R. Poirier, D. Silva, J. Carlberg, R. Binette, J. Fonseca.

## MUSIC DEPARTMENT

Officers of the Band are Thomas Davol, Business Manager; Robert Poirier, Librarian; Judson Carlberg, Assistant Librarian.

Officers of the Mixed Chorus are Nancy Thomas, President; Robert Binette, Librarian; Delia McCarthy, Assistant Librarian; Dale Silva, Business Manager.

Officers of the Orchestra are Nancy Harrison, Business Manager; Barbara Fischer, Assistant Business Manager; John Fonseca, Concertmaster and Librarian; Kathleen Burns, Assistant Librarian.

The band is the first of our musical organizations to appear in public at the beginning of the school year. An outdoor assembly is held for the entire student body on the day of the first football game and from that day on for the next ten weeks the band is busy playing for football games, Armistice Day assembly and Armistice Day parade.

At Christmas time, the chorus and orchestra are very active with Christmas concerts, assemblies and carols in the corridors.

After Christmas, the band prepares for their appearances at the Boston Garden basketball games. After this exciting and exhausting time the whole music department settles down to prepare for Spring concerts, festivals and graduation programs.

Our small ensembles, The String Quartet, String Trio, The Silvertones, Hilltop Serenaders, the Vocalaires and the Melodettes present many programs for school assemblies, P.T.A. and civic organizations.





## **MUSIC APPRECIATION CLUB**

The Music Appreciation Club was organized four years ago to afford the students at Durfee an opportunity to become acquainted with music on all levels of listening.

Meetings are held in an air of informality so as to make the absorption of the musical content of the material presented more enjoyable.

The programs, prepared by club members, have varied from jazz to classical, thus giving members a knowledge of many different types of music.

The officers are President Alice Guillemette, Vice-president Kathleen Burns, and Secretary Marceline LePage. Mr. Faust D. Fiore is faculty advisor.



Left to right: L. Bullock, R. Cornell, S. Friar

## NATIONAL HONOR SOCIETY

Each year, juniors and seniors who are in the upper twenty-five per cent of their class and are outstanding in character, leadership and service, are elected to the Mu Kappa Delta Chapter of the National Honor Society. The induction ceremony takes place at a special assembly held in May to which parents and members of the senior class are invited.

A coffee hour is held in the fall and a tea in the spring, two occasions looked forward to and enjoyed by all members and guests. At these events a social period with refreshments precedes an instructive talk given by a guest speaker.

Throughout the year, senior members voluntarily tutor students who have been absent from school through prolonged illness.

The advisors of the National Honor Society are Miss Mildred V. Carroll, Principal Ambrose F. Keeley and Miss Yolande Laliberte.



Left to right, first row: C. Viveiros, B. Mello. Second row: H. Mendonca, C. Quintal, F. Oliveira, F. Cabral, M. Leandro.

## PORTUGUESE CLUB

Only students who are attending or have attended Portuguese classes are eligible for membership in the Portuguese Club. The objective of this club is to acquaint the members with Portuguese ways of life and traditions, to increase their knowledge of Portuguese culture, and induce them to become better citizens.

Each year the club sponsors a display in the library corridor. Through the organization of parties and outings the club promotes recreation. Both the good times and the interest in a nation's heritage prove beneficial.

The club advisor is Mr. Antonio A. Serpa.



Left to right, first row: S. Friar, E. Arruda, M. Smith, B. Fischer, J. Zawrotny, J. LaVault, J. McCallum. Second row: S. Avramides, R. Costa, H. Kowalski, C. Deeb, M. Narciso.

## SANITATION COMMISSION

To supervise school sanitation conditions and emphasize the responsibility of students in matters leading to better health is the purpose of the Sanitation Commission. By having all of the health activities under the control of a central group, the goal of the commission is more easily attained.

One of the main functions of this group is to act as a court for students who have violated the health rules of the school. This court has the power of sentencing the guilty to punishment for their offenses. Such strict enforcement of regulations tends to minimize the number of offenders and improve conditions of neatness and cleanliness in our school.

The Sanitation Commission is divided into two governing parts, namely, an Upper Council and Lower Council. The upper council consists of the president, vice-president, and secretary of the club. Also, representatives from each class: three seniors, two juniors, one sophomore, one freshman. All other Health Councillors, who represent their respective home rooms, comprise the lower council of the organization.

This year the officers are Barbara Fischer, president; Malinda Smith, vice-president; Jane Zawrotny, secretary.

Through the guidance of Miss Angeline B. Crispo, faculty advisor, the Sanitation Commission has tried to act fairly in all matters concerning the health rules of the school.



Left to right, first row: J. Lipson, L. Hicks, N. Harrison, A. Guilmette, M. Kauffman, H. Sullivan, S. Geffen, B. Stocklinski. Second row: Richard Poirier, D. Rotenberg, D. Smith, A. Ostroff, C. Deeb, H. Rudolph, S. Poritz, C. Spivey, Robert Poirier, V. Mattos. Third row: J. Ragsdale, M. Mendell, R. Harrison, W. Silvia, R. Bucko, A. Kuliopoulos, G. Callahan, H. Wilson, R. Racette, L. Kane, R. Goltz, T. Coelho, R. Orabona, C. Sharkansky. Back row: H. Chafitz, G. Reed, J. Hahn.

## SCIENCE CLUB

It is important that every person should understand and appreciate the role of science in modern life. Such a broad understanding will help us to achieve a complete harmony with our environment and exercise our duties as citizens in making necessary decisions which more and more are influenced by the latest scientific discoveries. To gain an understanding and appreciation of science is the primary aim of the Westinghouse Science Club.





Left to right, first row: A. Robinson, J. Carvalho, M. Cabral, J. Clinton, N. Thomas. Second row: M. McCullough, B. Botelho, L. Lagace, L. Gustafson, R. Borges, J. Emmett, K. Orton, F. Cabral.

## THE SILVERTONES

One of the relatively smaller groups trained by our Music Department is The Silvertones.

Their music has delighted the student body at assemblies and the harmony of a dozen blended voices has brought pleasure to audiences outside school.



Left to right, first row: H. Cabral, I. Goldberg, B. Mello, C. Wojcik, G. Pereira, J. Hardro, C. Stephenson. Second row: D. Camara, L. Riley, S. Lamarr, T. Nunes, J. Ormerod, B. Lipson, B. Kane, T. Coute. Third row: A. Farinha, I. Farinha, L. Bernstein, J. Berube, D. Rebach, J. Wall, L. Kane, R. Trieff, M. Cohen, B. Jamoulis.

## SPANISH CLUB

The year's activities:

Song played to stress word order in Spanish "Telephone No Ring."  
Spanish festival songs played for cultural appreciation.

Arthur Brown, student visiting at Durfee, spoke on his fascinating career as interpreter of many foreign languages.

Competitive test on Spanish explorers, geography and history.

Game of charades held. Songs were written in Spanish.

Group arranged for the Spanish display held March 26-29, 1957.

Group participated in the identification of members through Spanish.



Left to right, first row—B. Fischer, L. Schwartz, H. Cabral, W. Reilly, M. Nawrocki, B. Jamoulis, J. McCallum, S. Friar. Second row: I. Goldberg, G. Callahan, J. Dutra, S. Avramides, L. Lataif, H. Wilson, K. Pollen, G. Burstein, A. Duffy, J. Woltman.

## SPEAKERS' BUREAU

This year saw the Speakers' Bureau enjoying another of its successful and profitable seasons under the capable direction of faculty advisor Miss Elizabeth L. Leonard.

The membership of the organization embraces S.A.A. officers, varsity debaters and seniors singled out for proficiency in public speaking. Each member participates actively in one of the bureau's bi-monthly meetings and gains invaluable experience as a speaker or program chairman. Voice recordings are provided, the use of the rostrum is taught, and members engage frequently in panel discussions and serious and mock debates. Those who took advantage of the opportunities offered for speakers to address outside audiences this year are Ambrose F. Keeley Jr., Stephen Avramides, Harold Wilson and William K. Reilly.

The club's activities in 1956 and 1957 spanned a myriad of informative speeches and humorous talks. Different personalities projected themselves with casual, conversational ease or dignified, formal poise. Highlight of the year occurred when the organization was addressed by guest speaker Principal Ambrose F. Keeley.

The festive annual Speech Banquet in June concluded the club's activities.



Left to right, first row: R. Greenberg, D. Pingley, E. Springer, W. Pereira, W. Springer. Second row: Mr. Silva, R. Cote, H. Pankowski, N. Bottomley, J. Paulo, P. Donovan, M. Freitas.

## TRAFFIC SQUAD

This year, as in past years, the Traffic Squad has successfully fulfilled its purpose.

In order to maintain safety and orderliness in the changing of classes, this group of students has faithfully carried out its assignments.

Assignments such as placing the "Do Not Enter" sign at the intersection of Rock and Cherry Streets, the opening of doors to insure a steady flow of student traffic, and the familiarizing of students with traffic rules and regulations are essential tasks. Thus, punctuality for classes and student safety can be best maintained.

Faculty Advisor is Mr. Jose Silva Jr.

Members not in the photograph are R. Bouchard, R. Clarke, J. Costa, J. Driscoll, D. Luiz, J. Marques, R. O'Brien and A. Poitras.



Left to right, first row: M. Roderigues, B. Stocklinski, L. Bullock, P. Kepple, A. Wheatley, L. Shapiro. Second row: A. Lane, J. Synnott, M. Verros, E. Fozzard, J. Zawrotny, A. Sullivan, C. Pierce. Third row: J. Dutra, R. Cormier, R. Nadeau, B. Hutchinson, L. Gizzi, K. Daby, G. Couto.

## WORLD HISTORY CLUB

The World History Club has completed its fourth year under the guidance of Mr. Herve B. Lemaire, faculty advisor. During these years the club has carried out its purpose to increase members' interest and knowledge of world affairs of yesterday and today.

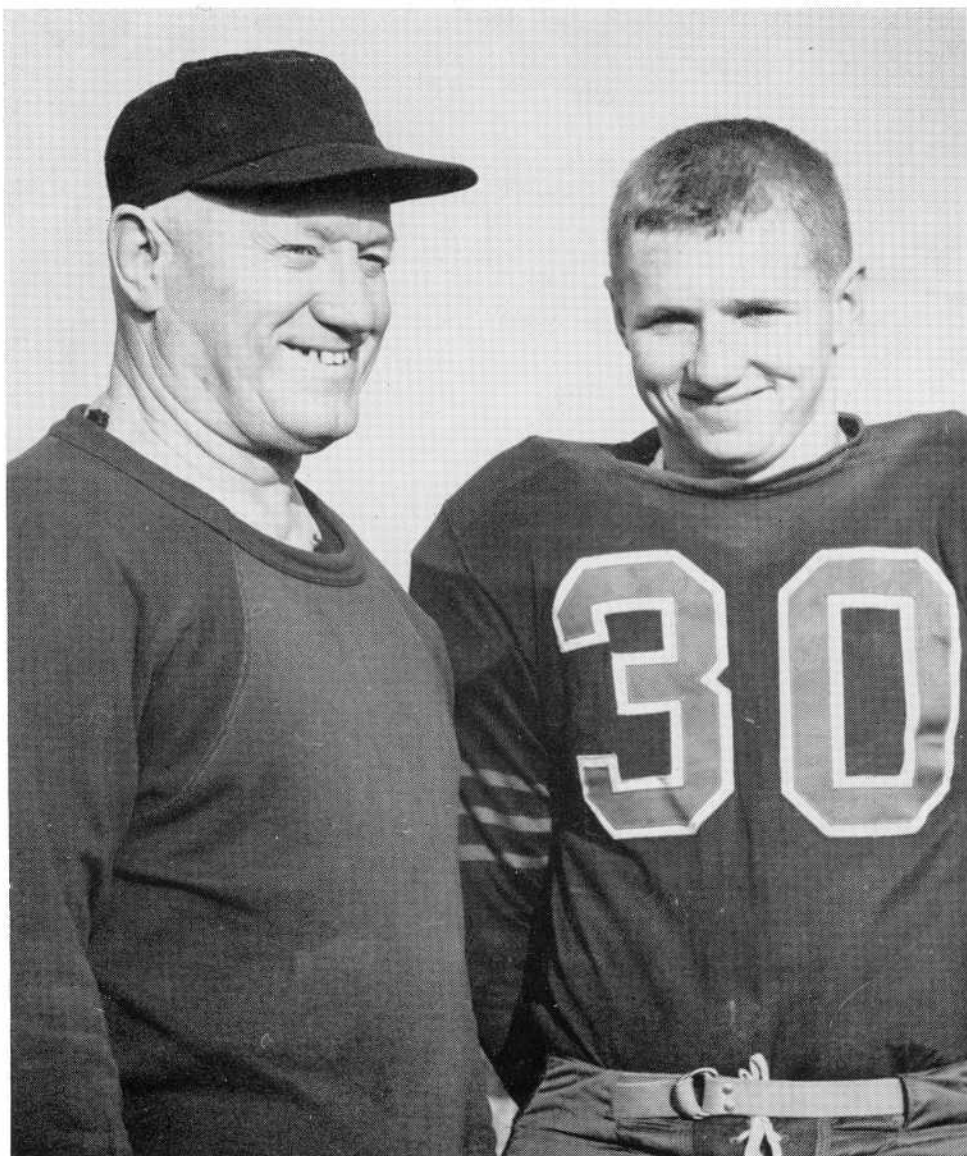
Being one of Durfee's larger organizations, the World History Club affords an opportunity for many students to participate in activities, enjoy trips, hear speakers, view slides and movies, and become aware of their responsibilities as future leaders of the United States of America and citizens of the world.

The World History Club sponsored its annual trip to the United Nations in New York on November 15 and an educational excursion to Boston in the Spring.

The officers of the club are Eleanor R. Fozzard, president; Malorie Verros, vice-president; Jane E. Zawrotny, secretary-treasurer.



# SPORTS





Left to right, kneeling: D. Baxendale, R. Hargraves, T. Leary, L. Urban, D. Sullivan, M. Freitas, J. Pavao, J. Sheehan. Standing: G. Elias, R. Gibson, G. Andrew, T. Salvo, R. Bridge, A. Keeley.

## FOOTBALL

Sparked by Gordon (Buddy) Andrew, Bristol County's fleetest back and highest scorer with a total of 98 points, the Urban coached gridsters set an impressive record of seven wins and two losses in '56. With a powerful, deceptive backfield and a hard hitting front wall, all under the orders of field general Russ Gibson, the Red and Black were looked at with respect by all of their opponents.

The Hilltoppers ran up against their stiffest competition when they played a tough Archbishop Williams eleven at Braintree and bowed in defeat by the score of 40 to 18. Four games later Durfee fell in defeat for the second and last time to a strong Wareham team that had won 32 out of 33 games. This was a heartbreaking defeat because Durfee could have and should have outscored Wareham.

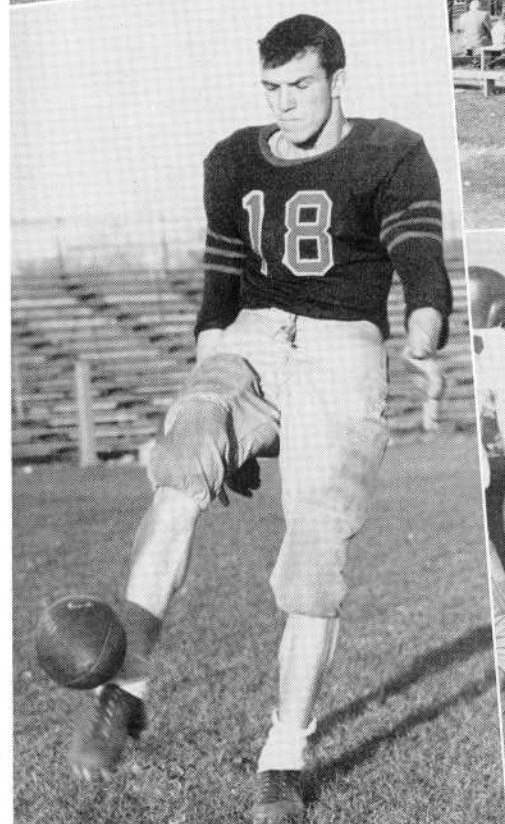
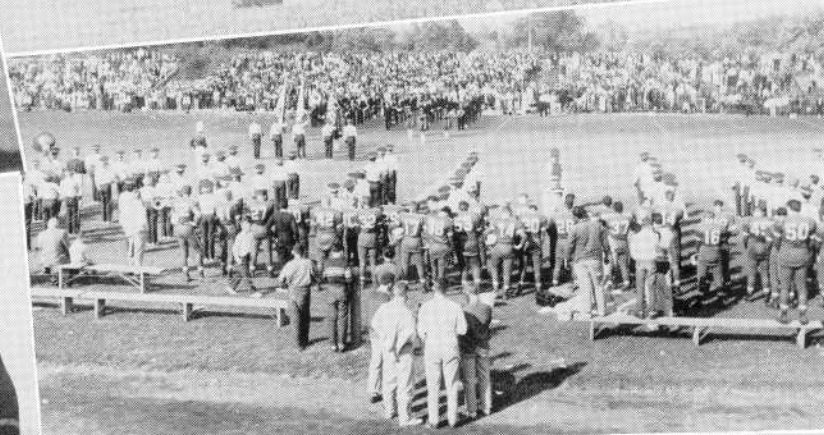
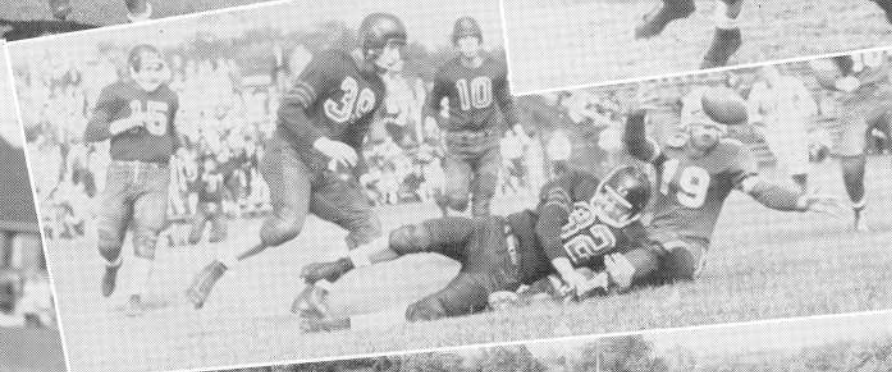
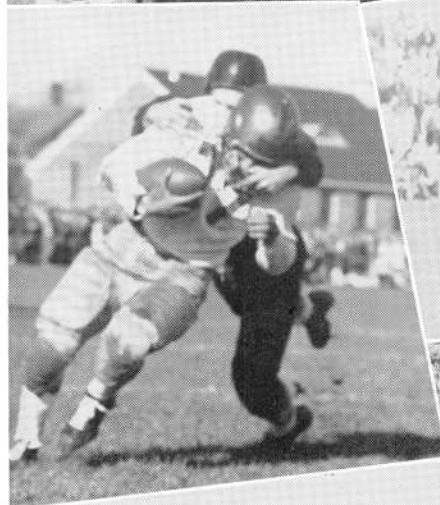
In the remaining seven games the Hilltoppers met some of their most spirited rivals, such as Coyle and New Bedford. The outcome of these games can be best interpreted from the scores. Durfee won both, by scores of 12-0 and 30-0, respectively.

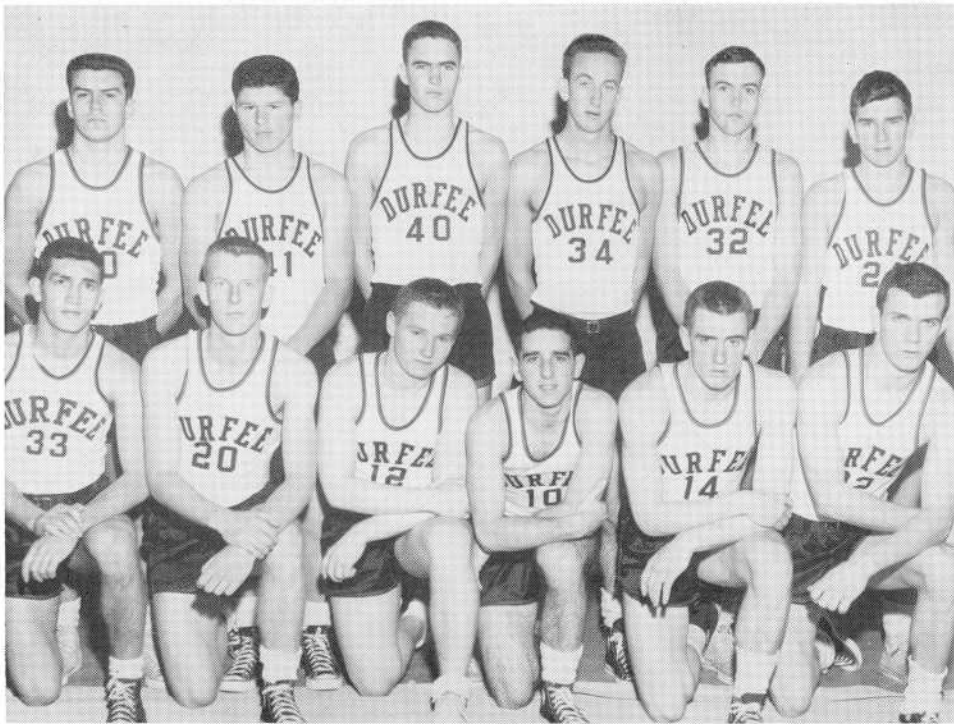
The fact that Durfee blanked five of its nine opponents and scored 149 points against 7 scored by county opponents is proof that the unsung heroes in the line did a fine job. Luke (Topper) Urban who guided the defensive fortunes of the team can claim part credit for this fine record. He received the Trevisano Trophy as outstanding lineman on the Durfee team.

The football season was climaxed by the annual football banquet and letter presentations. Seniors who received letters were: co-captains Gordon Andrew and Russell Gibson, (Andrew also received the Jake Reagan Memorial Trophy); Roland Boulay, Ronald Bridge, Michael Freitas, Gerald Hickey, Ambrose Keeley, Henry Kowalski, Timothy Leary, Barry McDonald, Peter Mersey, Donald Ray, Thomas Salvo, Jack Shapiro, Bradlee Smith, Luke Urban, Stanley Paine, manager, and Kenneth Shaker, assistant manager.









First row, left to right: G. Elias, D. Baxendale, L. Urban, T. Arruda, G. Andrew, R. Gibson. Second row: S. Kupiec, M. Souza, J. Carlberg, D. Ray, J. Connell, J. Sheehan.

## BASKETBALL

This year's basketball team, four out of five of whose regulars are members of the class of '57, once again captured the Bristol County laurels and enabled Durfeeites to travel to Boston Garden for the thirteenth straight year, by winning a berth in the preliminaries of the Eastern Massachusetts Interscholastic Basketball Tournament.

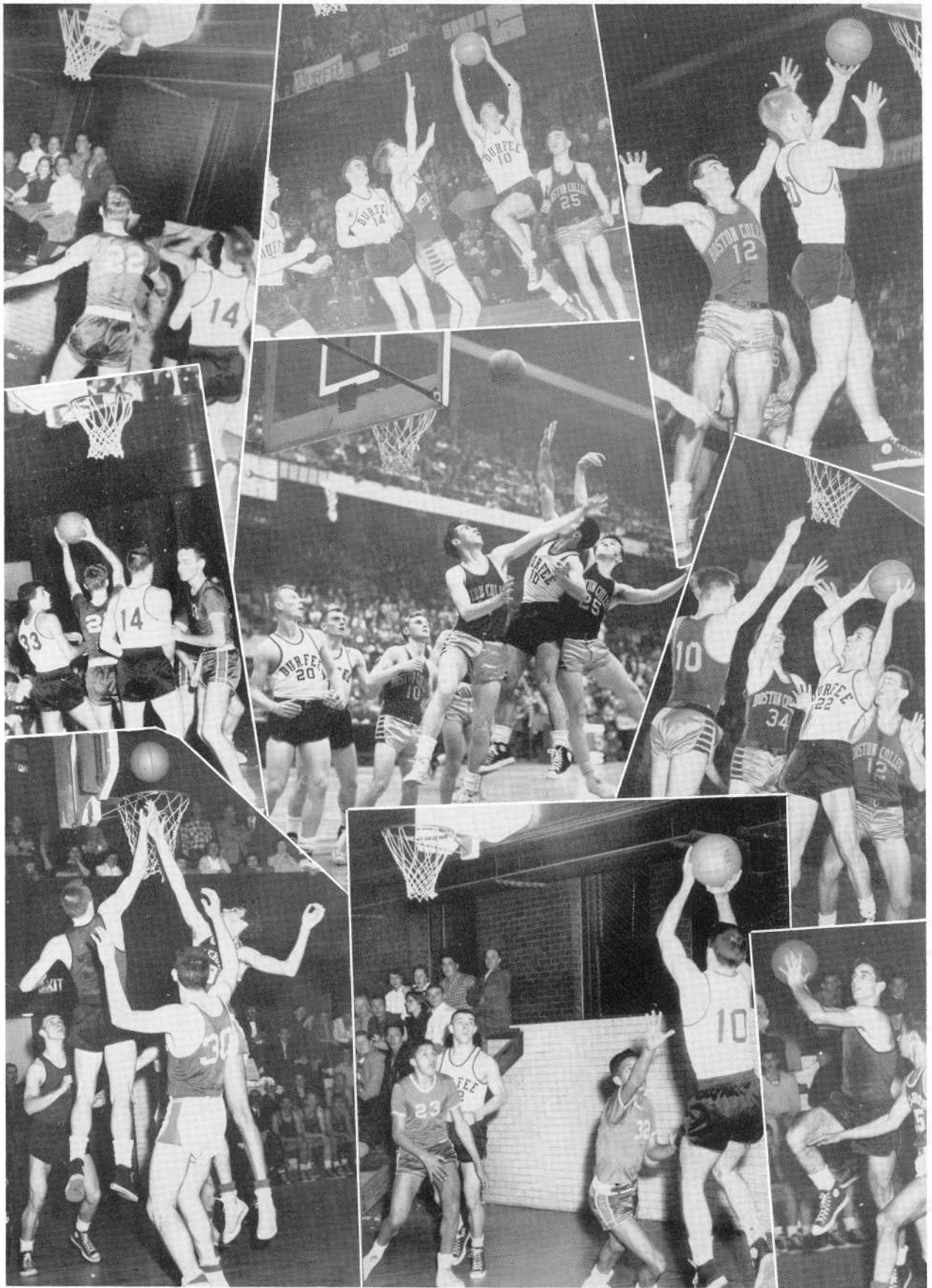
The Hilltoppers commenced the season by bowing to a strong Lawrence Central five and climaxed it by losing to a sure-hitting Boston College High quintet. The latter game eliminated Durfee from the tournament and shattered the hopes of optimistic Durfee rooters who thought that the Hilltoppers might go all the way for a second straight year and capture the coveted New England championship. It was, however, a successful season despite this fact, and we can be proud of our basketball team for establishing a fine record of eight wins and two losses in county competition.

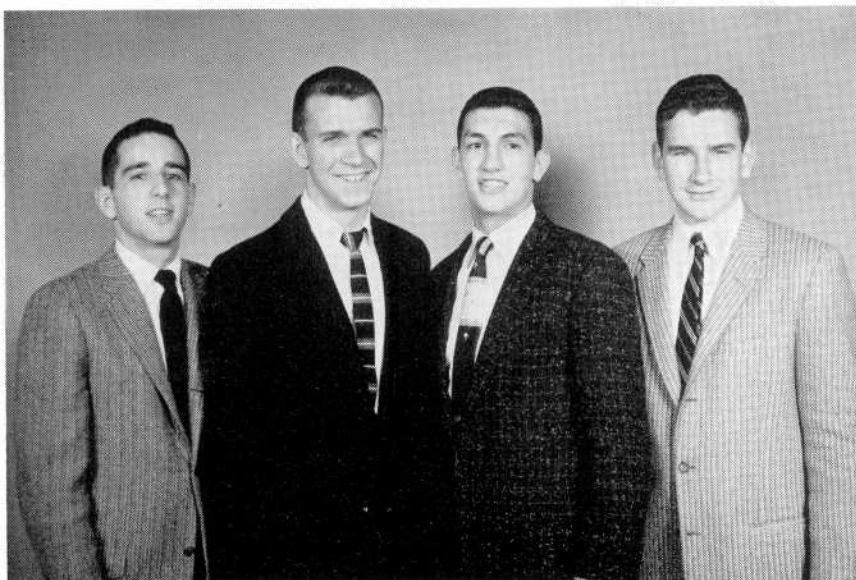
Tommy Arruda was high scorer on the Durfee team with 152 points scored in county competition and runner-up was Gordon Andrew with 149 points.

Arruda, Andrew and Russ Gibson were members of the Bristol County top ten scorers with averages of 15.2, 14.9 and 12.1 points per game, respectively.

Senior members of the starting five were co-captains Arruda and Andrew; Russ Gibson and Topper Urban. Don Ray was on the second string.







Left to right: T. Arruda, R. Gibson, G. Elias, J. Sheehan.

## **VARSITY CLUB**

The club is composed of athletes who have been awarded a letter in one or more sports. The aim of the club is to bring about a spirit of cooperation and good sportsmanship, off the field as well as on.

The highlight of the club's activities is the Annual Varsity Show, presented in the Spring under the direction of Mr. Joseph B. D'Adamo. The show features musical and dramatic skits, and novelty numbers.

Crowning of the Varsity King and Queen is one of the highlights.

# **Spring Sports**

Because this book must be printed before the commencement of any of the spring sports, it is possible to give only the names of those who are expected to participate in them and an optimistic preview of their outcome.

## **Baseball**

The baseball team is looking forward to another successful season. As Bristol County champs last year they competed in the Eastern Massachusetts Tourney. With a practically all-veteran outfield and infield the team expects to duplicate if not better the fine record of last season. Senior members of this year's anticipated lineup include Gordon Andrew, Tommy Arruda, Mike Freitas, Russ Gibson, John O'Brien and Luke Urban Jr.

## **Track**

Coach Hammond will have a veteran track team of thirteen holdovers from last season to work with. Losing only one meet last season to a strong New Bedford team, the Hilltoppers will be working hard to better this fine record. Seniors on the team are co-captains Ron Bridge and John Esperian, Gordon Andrew, Kenny Hunt, Don Ray, Tom Salvo and Dan Sullivan.

## **Tennis**

The 1957 tennis team expects to carry on the team's excellent record. The results of last year's successful season were 12 wins and 3 losses, and the team won the Massachusetts State Championship. It is interesting to note that in the past two years they were defeated by only one high school team; the other defeats came from the hands of more experienced prep school teams.

Senior netmen include co-captains Jerry Hahn and Sid Poritz, Tom Coelho, Kenny Palmer, Larry Pollen, David Reback and Arthur Smith, manager.

## **Golf**

Coach Nugent's boys will be trying hard this year to bring the same glory to Durfee that it has received so abundantly throughout the years from all its other sports activities. Golf is fast becoming a popular sport at Durfee and we can look forward to seeing better teams as the interest and enthusiasm grows.

Senior members of the golf team are Bill Almeida, Carl Deeb, Bruce Hutchinson and Neil Sowersby.



Kneeling: M. Manchester, A. Boulay, J. Woltman, C. Amarantes, R. Kenney, V. Mello, J. Podolski. Standing: M. Nawrocki.

## CHEERLEADERS

*"Hey! Hey! look at the score,  
That's O.K., but we want more."*

This year was a special one for the cheerleaders as it was their 25th anniversary. An organization proud of both school and team, the cheerleaders made their debut at the annual fall pep rally. Attired in red skirts and white crew neck sweaters for football, and charcoal black puritan style outfits for basketball, the squad led capacity crowds with their skillful T-E-A-M.

The cheerleaders are to be commended for their perfect attendance at all home and away games, regardless of weather or transportation difficulties.

The process of elimination involving outside judges is used for the selection of the cheerleaders.

Many thanks to Miss Nancy Carroll for her kind guidance.



Left to right: D. Frain, S. Kanuse, I. Medeiros, B. Greenwood, M. Donnelly, N. Ellis, M. Phenix.

## MAJORETTES

The majorettes are always present wherever the Durfee band is seen. Their lively activities and colorful uniforms help to foster school spirit among loyal rooters.

This group of seven girls works together throughout the year to produce original routines for pep rallies, football games, parades, and the basketball tournament at the Boston Garden. Another event which is looked forward to with enthusiasm is the Southeastern Massachusetts Music Festival where they compete with majorettes from schools throughout the State.

To be selected as a majorette is the ambition of many Durfee girls. Each year in the spring tryouts are held for sophomore girls, all of whom must have had passing marks for the third term. They are selected by judges consisting of two teachers and the present members of the majorette squad. The head majorette directs the training and assists in the choice of uniforms, purchased by the individual girls. The selection of head majorette takes place in May and the present junior members are eligible. Judges comprising two teachers and one outside person select the girl they feel best qualified.

At the football banquet each girl receives a D with baton insignium for her work during the year.





Left to right: P. Campos, D. Gardula, D. Hutchinson.

## **GIRLS' NUMERAL CLUB**

The Girls' Numeral Club, under the direction of Miss Virginia Frost, is an organization devoted to the promotion of girls' sports.

The club is composed of 55 girls who like and enjoy athletics. They are chosen according to their participation in the yearly sports events, by a majority of votes, and by their cooperation, leadership ability, dependability, and enthusiasm for sports.

In September members of the G. N. C. volunteered their services as Gym Leaders, to assist with physical education activities.

To qualify as a "Gym Leader", a girl must be either a junior or a senior. The girls are chosen for their leadership quality, their dependability, willingness to work, and their ability to direct a class when the teacher is not present.

Four stars must be earned each year to obtain membership in the club. They may consist of either one red and three gold or one gold and three red stars. These can be earned by active participation in basketball, volleyball, badminton, bowling, gym leading, refereeing and by committee work. Numerals and awards are given if these four stars are earned and also a gold basketball to seniors earning these stars.

While sports are emphasized many social gatherings such as the Alumnae Reunion and the Spring Outing are part of the club's activities.



Left to right: J. Wilkinson, D. Robidoux, A. Savard, M. Phenix, B. Maitoza, D. Hutchinson, P. Campos, G. Pelletier, D. Lurie, B. Duff, P. Belanger, E. Arruda, H. Pereira.

## **GIRLS' VARSITY BASKETBALL**

The Girls' Varsity Basketball team is a member of the Narrangansett Interscholastic League.

Players are chosen by Miss Virginia Frost, coach. Twelve girls make up the Varsity team which consists of six forwards and six guards.

Ten games are scheduled to be played during the season, five at home and the other five away. This year the team won six of its ten games, and was tied for second place with Case High School and Dominican Academy.

At the playoffs held at Case High School, Durfee was defeated by Westport High School. The Narry basketball crown was captured by New Bedford High School by nipping Somerset in the championship playoff. New Bedford won the New Bedford Division title and Somerset led the field in the Fall River Division.

All the teams participating in this playoff and all coaches and referees later enjoyed a banquet.

## ACKNOWLEDGEMENT

The Record Book staff is grateful to all whose cooperation was so important in assembling the material for the publication. We would mention particularly our classmates, who responded promptly to the call for glossies and information, and the faculty advisors and officers of clubs and other activities, for group photographs and write-ups.

We are especially indebted to the Fall River Herald News for our sports action shots and group photographs of athletic teams.

We appreciate, too, the service rendered by the several business organizations — the photographers, the engravers, the printers and the binders. Our thanks go also to our advertisers, whose patronage helped reduce the cost of the publication to the student.

Our final word of appreciation is for our faculty advisors, Miss Katherine L. Hogan and Mr. John T. Crowley, who graciously guided us through the task of producing this book for our classmates.

**SUCCESS**

**TO THE CLASS OF 1957**

**LORING STUDIOS**

**392 SPRING STREET**

**Opposite St. Mary's Cathedral**

**Telephone OS 8-5022**

CONGRATULATIONS  
TO THE  
CLASS OF 1957

**DURFEE HIGH BOOSTERS CLUB**

Organized — 1954

---

**Graduates ...**

Congratulations on Your Successful Past



**Success ...**

To You in the Years Ahead

**INSURE the Future — Work Diligently**



Francis E.  
**SULLIVAN**  
*Insurance Service - Real Estate*  
161 So. Main St., Fall River, Mass.  
OSborn 9-6477



OPEN 10 A.M. TO 10 P.M.

## Bridal Shopping Center

105 Pleasant Street  
Fall River, Mass.

TEL. 4-4334

Complete wedding service in one store

1. BRIDAL SALON  
Gowns and Headpieces  
for entire party  
Brides  
Bridesmaid  
Flower Girls  
Mother of the  
Bride

2. ATAMAN STUDIO  
Weddings  
Candid - 3D - Studio  
School Photographers  
Baby Pictures  
Family Groups  
Communions  
Confirmation

also 4. Bridal Florists  
5. Wedding Cakes  
6. Invitations  
7. Cadillac Limousine

3. FALL RIVER  
TUXEDO SHOP  
Tony Martin Tuxedos  
White Dinner Jackets  
Cutaways  
Oxford Strollers  
All accessories - Shoes,  
Shirts, etc.

8. Honeymoon Luggage  
9. Catering Service  
10. Rental of Hoops, Over-  
skirts, Hip Pad, etc.

**CONGRATULATIONS!**  
**GAMMA CHAPTER**

**TRI — HI — Y**

President .....	Patricia Campos
Vice-President .....	Patricia Kepple
Secretary .....	Madeline Carvalho
Treasurer .....	Jacqueline LaVault
Chaplain .....	Carolyn Brown

**SENIOR MEMBERS**

Hannah Cabral  
Lynne Riley  
Eleanor Fozzard

Lauria Bullock  
Joann Synnott  
Mary Ann Wordell

---

**SATURDAY NITE CLUB**

President — Francis Wilson

Vice President — Patricia Kepple

Secretary — Lynne Riley

**SENIOR MEMBERS**

Anna Charette  
Irene Farinha  
Robert Guimond  
Mary Hammond

Jacqueline LaVault  
Margaret Nawrocki  
Alice Sullivan  
Harold Wilson

**JUNIOR MEMBERS**

Ann Boyko  
Alice Dion  
Dorothy Frain

Paul Hickey  
Alfred Lopes  
Lawrence Mercier

Patricia Tavares

COMPLIMENTS OF  
**ALPHA CHAPTER**

**TRI — HI — Y**

President ..... Beverly Greenwood  
Vice-President ..... Muriel Phenix  
Secretary ..... Dale Rego  
Treasurer ..... Theresa Amaral  
Chaplain ..... Lynne Abbott

**SENIOR MEMBERS**

Bernadette Levesque  
Mary Hammond  
Evelyn Viera  
Joanne Costa

Vivian Mello  
Irene Farinha  
Janet Coelho  
Helen Sullivan

Cecelia Bettencourt

---

**BETA CHAPTER**

**TRI — HI — Y**

President ..... Anna Charette  
Vice-President ..... Geraldine Callahan  
Secretary ..... Ann Louise Lane  
Treasurer ..... Ilene Kanuse  
Chaplain ..... Diane Lifrak  
Sergeant-at-Arms ..... Barbara Maitoza  
Advisor ..... Mrs. Jean Ford

**SENIOR MEMBERS**

Jacqueline Beaulieu  
Dale Hutchinson  
Kathleen Monahan  
Margaret Morrow

Malinda Smith  
Janice Borges  
Geraldine Fonseca  
Margaret Panchley

Susan Barker

## CONGRATULATIONS — CLASS OF '57

### BETA CHAPTER

#### HI— Y

President ..... Harold Wilson  
Vice-President ..... Francis Wilson  
Secretary ..... Raymond Cormier  
Treasurer ..... Joseph Golden  
Chaplain ..... Norman Miville  
Sergeant-at-Arms ..... Albert Lopes

#### SENIOR MEMBERS

John Bailey  
Robert Ciullo  
Kenneth Daby  
Carl Deeb  
Gerald Hickey

Henry Kowalski  
Alcide Levesque  
Donald Magee  
Francis McKenzie  
Robert Morris

Raymond Nadeau

#### JUNIOR MEMBERS

William Burns  
Gerald Gagnon  
Robert Golitz

Paul Hickey  
Larry Mercier  
James O'Brien

Frederick Rys  
John Sheahan  
Paul Souza

---

#### COMPLIMENTS OF

#### SCOTTIES

President ..... Janet Payer  
Vice-President ..... Madeline Carvalho  
Secretary ..... Helena Pereira  
Treasurer ..... Eleanor Arruda  
Advisor ..... Florence Sincoski

#### Senior Members

Geraldine Callahan  
Maureen Dunlea

Kathleen Monahan  
Margaret Moreau

Compliments of

DURFEE THEATER  
EMPIRE THEATER  
CENTER THEATER  
CAPITOL THEATER  
PARK THEATER  
SOMERSET PLAYHOUSE

Compliments of

**CHERRY'S**  
149 SOUTH MAIN STREET

Fall River's  
Leading Fashion Store

Compliments of

**THE LIST COMPANY**  
Brady Building  
142 SECOND STREET  
Fall River, Massachusetts

A Sound Reputation for  
Financial Service and Guidance  
for over 25 years

COMPLIMENTS

OF

**A FRIEND**



Compliments of

**WALTER C. FRAZE CO.**

Complete  
Athletic Outfitters  
for  
Durfee High School

9 NORTH MAIN STREET  
FALL RIVER

---

Compliments

of

**John and "Andy" Farrissey**

Compliments of

**R. A. McWHIRR CO.**

169 SOUTH MAIN STREET

Fall River's  
Largest Department Store

---

Compliments of

**ALPHA HI—Y**

President—Ronald Bridge  
Vice-President—Gerald Couto  
Secretary—Douglas Baxendale  
Treasurer—Louis Lataif  
Chaplain—Thomas Salvo

**MEMBERS**

Charles Ashworth	John O'Brien
Bradford Bridge	Stanley Paine
John Connell	Henry Pankowski
Peter Lavault	Kenneth Shaker
Edward Lyons	Dale Silva
Arthur Skelly	

Compliments of

**VIVE SOCIETY**

President ..... Malinda Smith  
Vice-President ..... Lynne Riley  
Secretary ..... Joan Dickson  
Treasurer ..... Edith Olson

---

**S. S. KRESGE COMPANY**

Main Street at Pocasset

Best Wishes

Everything in School Supplies

Compliments of

*Lenor's*  
"where fashion is first"

---

Compliments of

**FALL RIVER HERALD NEWS**

# WEDDING INVITATIONS



OPEN 10 a.m. to 7 p.m. daily  
Mon. & Wed. until 9 p.m.

- ★ Bridal Books
- ★ Shower Bells
- ★ Favors
- ★ Bibles
- ★ Games
- ★ Napkins
- ★ Matches
- ★ Stationery
- ★ Job Printing

165 Jepson St. - off Eastern Ave., near Kerr Mills - OSborne 3-5536

## THE BRIDE'S SHOPPE

518 SOUTH MAIN STREET

Be sure to visit our "FORMAL NOOK"

Exquisite Selection

For Proms \$14.95 to \$49.95

---

Telephone OSborne 2-2861

## NORA'S

### COLONIAL RESTAURANT

Home Cooking

162 BANK STREET

FALL RIVER, MASS

---

COMPLIMENTS OF

### B'nai B'rith Girls

President ..... Irma Schwartz  
Vice-President ..... Ruth Rice  
Recording Secretary ..... Barbara Kane  
Corresponding Secretary ..... Dorothy Lurie  
Treasurer ..... Marilyn Rothman

COMPLIMENTS OF

### KAPA

President ..... Joanne Woltman  
Vice-President ..... Luiza Schwartz  
Recording Secretary ..... Irma Schwartz  
Corresponding Secretary ..... Paula Sludsky  
Treasurer ..... Dorothy Lurie

Tel. OS 2-5315

### **Mullen Studio**

Student Specials  
Candida  
3D-Color  
Formal  
Portraits and Commercial

130 South Main Street      Fall River  
Hudner Building

---

CONGRATULATIONS!

### **Gray Typewriter Company**

134 Second Street

---

Tel. OS 2-1482

### **Wolf Jewelry Co.**

The Diamond Store of Fall River  
Harry A. Wolf

150 South Main Street  
Corner Borden Street

---

### **Faria & Son**

FUNERAL HOME

589 South Main Street  
Representative Manuel C. Faria  
Proprietor

### **Henry J. Feitelberg**

INSURANCE  
AND  
TRAVEL

29 North Main Street      Fall River  
Tel. OS 5-7408

---

### **Touhey's Pharmacy**

Arthur J. Shea, Reg. Pharm., Prop.

202 Rock Street  
FALL RIVER, MASS.

Prescription Specialists Since 1883

---

### **Robert A. Wilcox Co.**

22 Bedford Street

STATIONERY  
SCHOOL SUPPLIES

---

### **Sam Hall's Music Store**

169 North Main Street

"Everything for the Music Lover"

### **Ernest Torchia Studio**

PROFESSIONAL PHOTOGRAPHERS

518 South Main Street  
Fall River, Massachusetts

Tel. OSborne 3-3957

---

Tel. OS 9-6161 Evenings by Appointment

### **Robert's Fur and Formal Shop**

FULL DRESS RENTAL SERVICE

White Tuxedo Jackets — Tuxedo  
Tail Coats — Cutaways  
and All Accessories

383 Spring Street  
Next to St. Mary's Cathedral

---

### **LAVOIE'S**

JEWELERS — OPTICIANS

238 South Main Street  
Corner of Spring Street

---

COMPLIMENTS  
OF

**ADAMS BOOKSTORE, INC.**

---

**WILFRED J. GINGRAS**

GENERAL INSURANCE

330 Granite Block

Tel. OS 6-8253

Compliments of

### **Modern Furniture Company**

376 South Main Street  
Telephone OS 6-8291

"Your Grand Rapids  
Furniture Guild Store"

---

Compliments  
of

**W. T. Manning**

---

### **Maury Kusinitz, C.L.U.**

GENERAL — LIFE INSURANCE

17 Second Street  
Fall River, Mass.

Telephones { OS 4-3595  
                  { OS 2-7419

---

### **BEEDEM'S**

Everything for Men and Young Men

308 SOUTH MAIN STREET

also located in Somerset  
Just over Brightman Street Bridge

---

### **HUTCHINSON'S ART SHOP**

Raymond L. Hutchinson, Prop.

PICTURES, PICTURE FRAMING  
ARTIST'S SUPPLIES

154 Second Street



**CHINA ROYAL**

American and Chinese Restaurant  
REAL CHINESE FOOD  
Foods to Take Out — Air Conditioned  
26 North Main Street  
Tel. OS 4-2310 Fall River, Mass.

GOOD LUCK FROM  
KAZEN'S

Better Shoe Service  
GRANITE BLOCK  
22 A Street Fall River, Mass.

COMPLIMENTS OF  
ACADEMY THEATER

COMPLIMENTS OF  
A FRIEND

COMPLIMENTS  
OF  
**A Friend**

Congratulations to the Class of '57!

**LOUISE'S**

298 South Main Street  
Famous for Dresses and Gowns

COMPLIMENTS OF  
A FRIEND

COMPLIMENTS OF  
LION'S STORE

**MARY BURNS GOWN SHOP**  
BRIDAL — FORMALS — WRAPS

100 Summer Street  
Boston, Mass. DE 8-8033

**Aleph Zadeh Aleph**

**OFFICERS**

Kenneth Murray ..... President  
Michael Mendell ..... Vice-President  
Kenneth Hillman ..... Treasurer

**SENIOR MEMBERS**

Arthur Bakst ..... Kenneth Palmer  
Harvey Chafitz ..... Sidney Poritz  
Jerry Hahn ..... Jack Shapiro  
Aaron Ostroff ..... David Smith

**Autographs**

# Autographs

# Autographs

# Autographs

## Autographs



# Autographs