

RECORD BOOK



B. M. C. DURFEE HIGH

FALL RIVER, MASSACHUSETTS



To Mr. Joseph R. Hathaway,
instructor in the English Department
and Freshman Class Advisor, whose
guidance and sincere interest in our
scholastic accomplishments have been
a great aid in our search for
knowledge and self-improvement, we,
the Class of 1961, proudly dedicate
our Record Book.

**D
E
D
I
C
A
T
I
O
N**

**To the Members of the Graduating Class of 1961
of the B. M. C. Durfee High School:**

There is no doubt that one of the great turning points in the lives of young Americans is graduation from high school. It is an occasion of triumph, and one of great anticipation. To all of you go my heartiest congratulations and the very best wishes of all of us who have had anything to do directly or indirectly with your education. To all of you go our hopes for a future in which you will find the purpose and satisfaction you have desired.

Our nation and our city need desperately the talents and the hopes of youth. This has always been the case, but probably never more so than today, with all its trials and tribulations. The opportunities before you are endless, and the advantage you take of them will be the measure of your character and training. Wherever you go, you will always be known as a Durfee graduate. That, I assure you, is no small distinction. Durfee graduates have achieved success in all parts of the world and your school is recognized as one of high merit. It is a responsibility to live up to. Your association with Durfee has, I know, brought out in you inherent qualities of greatness and determination. With these as important assets, you should go far, and the farther you go, the greater will be the satisfaction of all of us, including your parents and your fellow-citizens.

With every best wish, I am



Sincerely yours,

William S. Lynch

Superintendent of Schools.

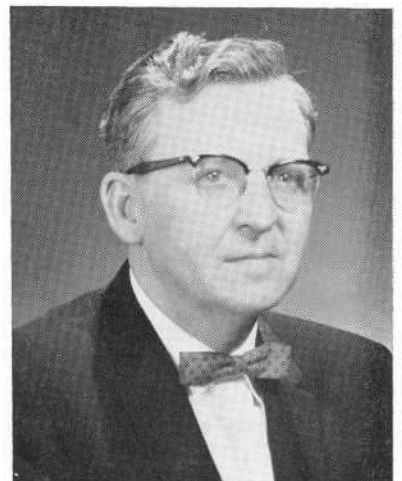
TO YOU, THE CLASS OF 1961:

I offer my heartiest congratulations on the completion of your high school education. For many years your parents and teachers have tried to direct you towards the paths that lead to successful careers. Your preparation has included solid subject matter augmented by the high ideals of cooperation, courtesy, and self-control that are all a part of the Durfee High School tradition. This has been your preparation for success, but it will be only a blurred image without work and perseverance to bring it into focus. You must now face the challenge of a busy industrial life or the continuation of research in the college of your choice.

We pray that you will be well spiritually, mentally, and physically, and it is our hope that you will make your life successful as well as happy and worthwhile.

Robert J. Nagle

Principal



FACULTY

Robert J. Nagle, *Principal*

Thomas W. Hammond, *Vice-Principal* Daniel Kelly, *Vice-Principal*

Amasa F. Williston, *Vice-Principal*

Charles D. Smith, *Dean of Boys*

Thomas J. Walsh, *Assistant Director of Vocational Guidance*

Yolande B. Laliberte, *Associate Dean of Girls*

Alice C. Harrington, *Associate Dean of Girls*

Helen G. Amiot
Carmi A. Belmont
Clinton A. Borden
Thomas T. Brady
Dolores M. Burns
Edward F. Carey
Joan Carfagno
Mildred V. Carroll
Nancy Carroll
Marion L. Claflin
William F. Coady
James F. Conlin
Hannah L. Crawford
Angelina Crispo
John T. Crowley
Joseph B. D'Adamo
Margaret G. Dailey
Armand A. Dallaire
Edna U. Delahanty
Daniel J. Delaney
Gerard A. Delisle
Hazel M. Donnelly
James E. Donnelly
Margaret G. Doran
Edward B. Downs
Ruth H. Downs
Roger H. Dubois
Grace M. Dunn
Vincent M. Fitzgerald
Ralph J. Fletcher
Conrad P. Fortier
Carrie T. Foulkes
Arthur D. Frank
Virginia W. Frost
Lenora G. Goltz

Chester J. Gosciminski
Mary C. T. Grandfield
Frederick J. Harrington
John J. Harrington
Margaret M. Harty
Joseph R. Hathaway
Katherine L. Hogan
John J. Hrinko
Louise S. Johnson
Frank J. Jordan
Thomas E. Karam
Evelyn M. Katersky
Stephen Kay
Margaret F. Keefe
Helena A. Kelley
George Kelly
John E. Kiley, Jr.
Mary Y. Kostas
Joseph J. Lawlor
Mary S. Leary
Dorothy Lecomte
Elizabeth L. Leonard
Frederick Lindquist
Edmond M. Machado
Earl V. Malmborg
Grace L. Martin
John J. McCann
John Medeiros
A. Lincoln Mekelburg
Irma S. Mello
Charles Mendes
Donald F. Montle
Margaret A. Mullaney
Constance F. Murphy
Pauline Nadeau

Stephen Nawrocki
Ruth W. Newkirk
Caesar Nobrega
William A. Nugent
Anne L. O'Neil
Lorena L. Pacheco
James Panos
James W. Pelletier
Margaret H. Powers
Raymond F. Powers
Robert A. Richard
Elton H. Sanford
Antonio A. Serpa
Mannis Shapiro
Henry J. Shea
Daniel Sheahan
Thomas Smithson
Dominick R. Sperduti
Angelo A. Stavros
Anna L. Sullivan
Austin Sullivan
David Sullivan
Dorothy C. Sullivan
Helena V. Sullivan
Mary E. Sweeney
Samuel Swidey
Helen J. Tripp
Marion L. Torphy
Dorothy H. Urban
Louis J. Urban
Bertrand Warren
Margaret J. Whalon
A. Wilson Whitman
Dorothy E. Wolstenholme

Florence M. Burns, *Principal Clerk*
Anna C. Harrington, *Clerk*

Ann T. Coughlin, *Clerk*
Kathryn Lenehan, *Clerk*

IN MEMORIAM



JEREMIAH E. HOLLAND



ROMEO J. DUFOUR

In bidding farewell to the faculty of Durfee and expressing our deep appreciation to the men and women who have instructed and guided us for four years, we join them in mourning the loss of two outstanding teachers who were taken by death in the course of our senior year.

Mr. Holland and Mr. Dufour served honorably in our nation's armed forces in time of war; in peace, they devoted all their talent and energy to the task of impressing upon us the importance of respect for life and property, especially on the highways.

Together they established and administered the Driver Education Program in our school. With patience and understanding they prepared hundreds of students not only for the State test but also for a lifetime of safe driving.

The most sincere tribute we can pay to their memory is a pledge to put into constant practice the principles they strove so earnestly to teach.

WHO'S WHO

MOST POPULAR

Sheryll Barnes

Douglas Mello

BEST LOOKING

Sheryll Barnes

Richard Pavao

MOST DIGNIFIED

Elizabeth Westgate

Lawrence Lataif

MOST ATHLETIC

Ailsa Harding

Lee Woltman

BEST DANCER

Joan Flynn

Paul Thibault

MOST INTERESTING

Sally Sampson

Edward Mekelburg

BEST SPEAKER

Mona Thaler

Thomas Costa

BEST ALL-AROUND STUDENT

Rosemary Quong

Douglas Mello

MOST BRILLIANT

Eugenia Ziotas

David Trindade

MOST LIKELY TO SUCCEED

Rosemary Quong

Douglas Mello

Ten Highest Ranking Seniors

DAVID TRINDADE

EUGENIA ZIOTAS

GERALD BEDRICK

MARILYN LURIE

EDWARD CHAMPLIN

DOUGLAS MELLO

ALLAN CURRAN

LOUISE ST. LAURENT

PRISCILLA JANSSEN

MONA THALER

President of Student Council

ROSEMARY QUONG

President of the National Honor Society

LOUISE ST. LAURENT

President of the Home Room Directors

MICHAEL WALSH

Editor of The Hilltop

BARBARA LEONARD

HALL OF FAME

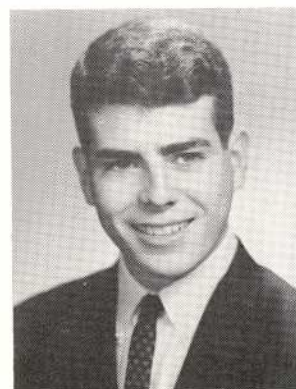
S T A F F



RONNA RATNER
Editor



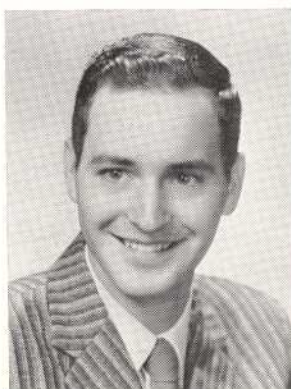
SUSAN BARNES
Assistant Editor



PAUL CORDEIRO
Assistant Editor



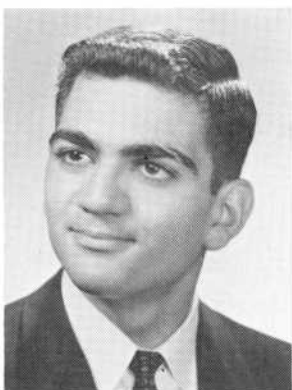
GERALDINE MICHAEL
Typist



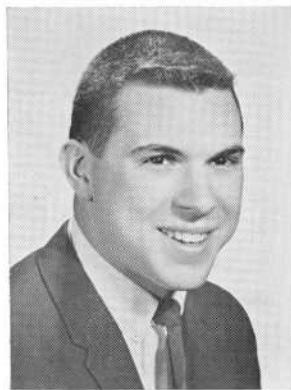
PAUL ANCTIL
Typist



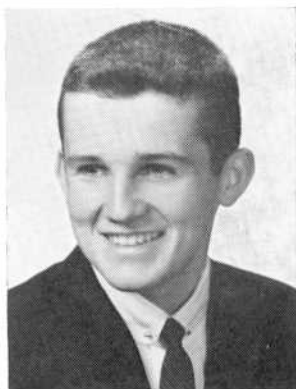
PRISCILLA JANSSEN
Typist



LAWRENCE LATAIF
Business Manager



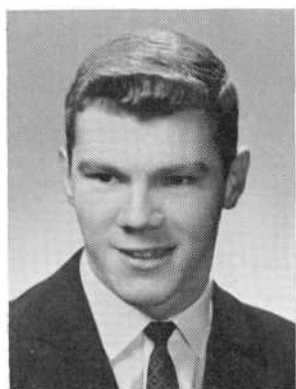
LEE WOLTMAN
Sports Editor



ANDREW McLAUGHLIN
Ass't Bus. Mgr.



EUGENIA ZIOTAS
Asst. Bus. Mgr.



ALFRED REBELLO
Typist

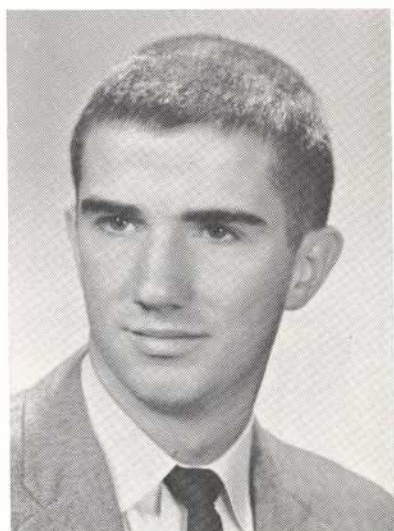


IRENE WISZ
Typist

CLASS OFFICERS



DOUGLAS MELLO
President



PAUL GIBSON
Vice-President



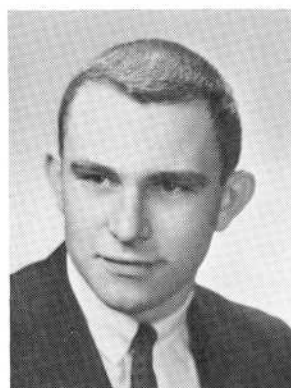
BERNICE BARNABY
Secretary



ABRAHAM CHARLES ABDALLAH

RICHARD N. AGUIAR

Varsity Club 3, 4
World History Club 4
Home Room Director 3
Football 2, 3, 4
Baseball 1
Basketball 1, 2



DUDLEY E. ALBERT

LINDA ALMAS

Glee Club 2
Portuguese Club 3



NATALIE A. ALMEIDA

Glee Club 2
Portuguese Club 3

PATRICIA A. ALMEIDA

Home Room Director 1
Glee Club 2
Portuguese Club 2, 3
Basketball 2



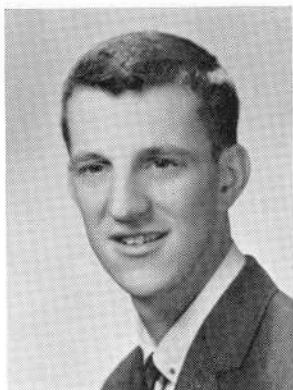
PAULA T. ALMEIDA

Glee Club 2

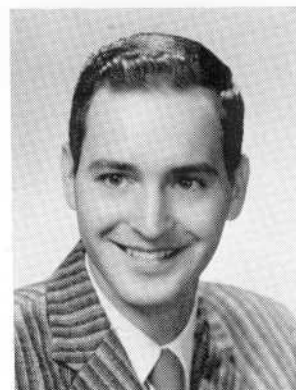
ELAINE ALVES

Glee Club 2
Basketball 2
Portuguese Club 2





GENE P. ALVES



PAUL V. ANCTIL

Chess Club 2
Camera Club 3
Business Club 4
Office Aide 4
Bank Cashier 4
Record Book Typist 4



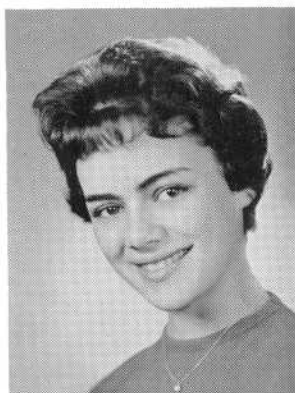
MADELINE M. ANDRADE

Glee Club 2
Portuguese Club 2, 3



WILLIAM H. ANDRESEN

Track 3
World History Club 2
Cross Country 4



PATRICIA M. ANTAYA

Office Aide 4



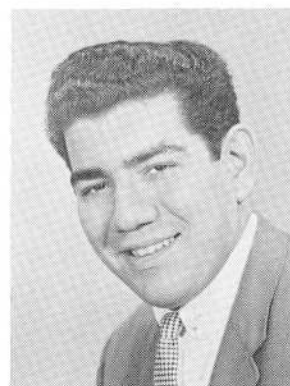
CYNTHIA L. ANTONE

National Honor Society 4
Numeral Club 3, 4
German Club 4
Classical Club 2, 3, 4
Volleyball 1, 2, 3, Capt. 4
Gym Leader 4



JOSE C. ANTUNES

National Honor Society 4
Chess Club 1, 4
Classical Club 2
Home Room Director 1, 2
German Club 2



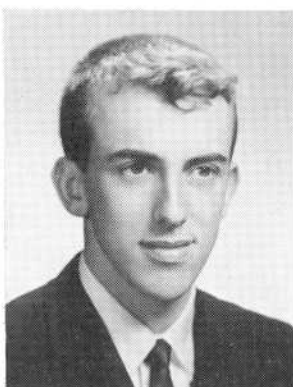
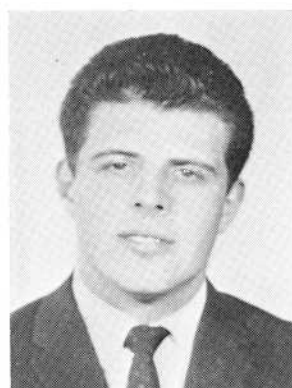
EDMUND ARAUJO



ALFRED ARRUDA

ANTHONY ARRUDA

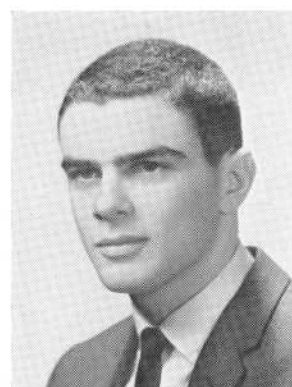
Football 2, 3, 4
Portuguese Club 2, 3
Track 1



GERALD J. ARRUDA

RICHARD ARRUDA

World History Club 4



RITA J. ARRUDA

Basketball 2
Portuguese Club 2
Office Aide 4

GERALDINE A. AYASH

Dramatics Club, Treas. 2
Glee Club 2, 3, 4
Senior Mixed 3, 4
Classical Club 2, 3, 4
German Club 3, 4
Vocalaires 3, 4

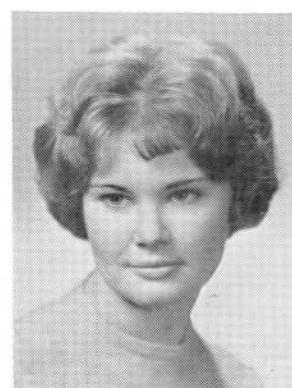


JACQUELINE T. BACON

Jackie
Glee Club 2
Basketball 2
Office Aide 4
Business Club 4

ELIZABETH A. BAILEY

National Honor Society 4
Home Room Director 3
Health Councilor 3
Majorette 3, 4
Basketball 2
Glee Club 2





WARREN L. BAKER



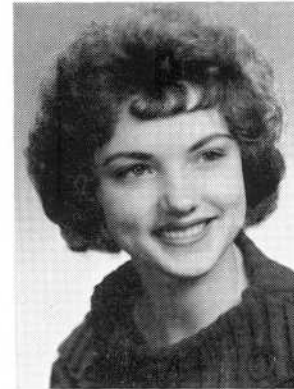
MARGUERITE P. BANVILLE

National Honor Society 4
Basketball 2
Junior Red Cross 3, 4
Dramatics Club 3
Camera Club 4



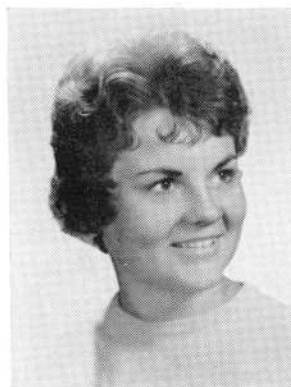
ROSE MARIE BARBOZA

Glee Club 2, 3
Basketball 2
Fistball 2
Business Club 4



DELLA ELIZABETH BARKER

Glee Club 2
Volleyball 2
Business Club 3, 4



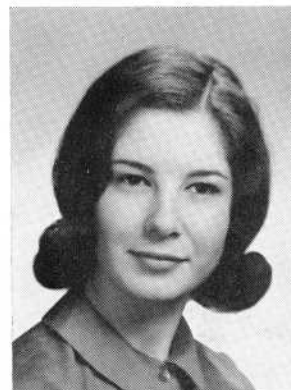
BERNICE MARIE BARNABY

Cheerleader 3, 4
Class Secretary 4
Student Council 3, 4
Home Room Director 2, 3
Prom Committee 3



SHERYLL J. BARNES

Glee Club 2
Health Councilor 2, 3, 4
Majorette 3, Head 4
Basketball 2
Science Club 4

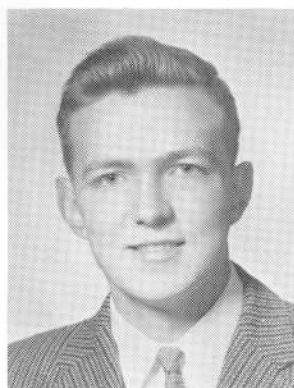


SUSAN A. BARNES

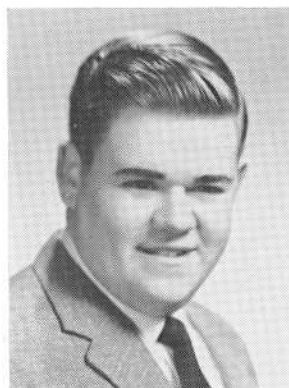
Glee Club 2
Spanish Club, Vice-Pres. 3
Record Book Asst. Editor 4



KENNETH BARTON



DONALD L. BASINGER



WILLIAM J. BAYLISS
Home Room Director 2



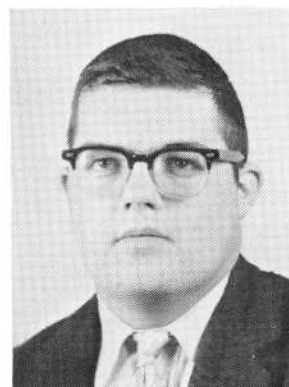
NANCY E. BEATTIE
Glee Club 2, 3, 4
Speakers' Bureau 4



JEANNE L. BEAUCHESNE



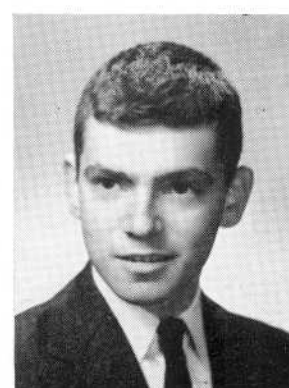
ANDRE L. BEAULIEU
Glee Club 2, 3



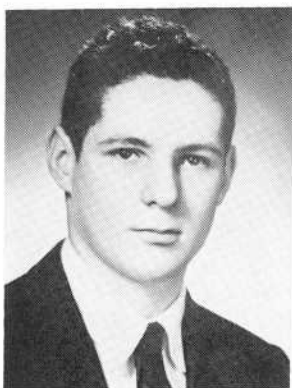
EDWARD J. BEAULIEU



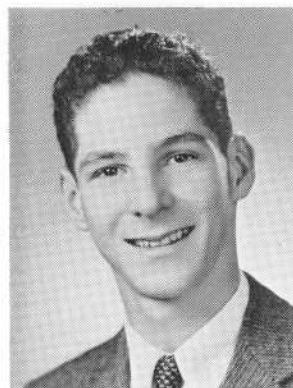
JAMES A. BEDARD
Speakers' Bureau 4
Dramatics Club 4



GERALD I. BEDRICK
German Club 2, 3, Pres. 4
National Honor Society 3, 4
Mathematics Club 2, 3, 4
Home Room Director 3, 4
Classical Club 2, 3
Golf 2



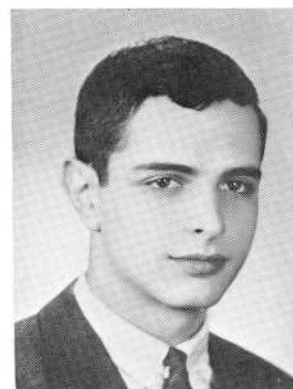
PAUL R. BERGERON



PETER R. BERGERON



JOSEPH H. BERNARD



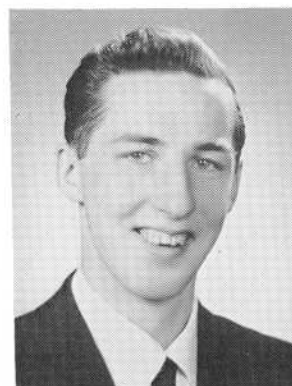
JESSE MICHAEL BERTHOLDE



SHIRLEY ANN BERTONCINI
 Sec., Sanitation Commission 2
 Health Councilor 2
 Basketball 2



ADRIENNE M. BERUBE
 Orchestra 2, 3, 4



LEO J. BERUBE



MARY LOUISE BETTENCOURT
 Glee Club 2
 Basketball 2



NORENE IRENE BIELECKI

Glee Club 2



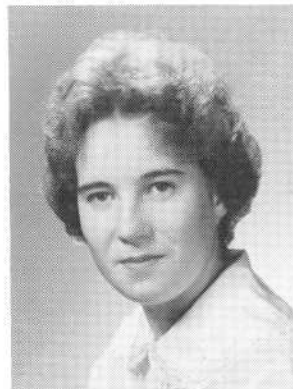
JOSEPH J. BIGOS

Band 2, 3, 4
Orchestra 2, 3, 4
Pep Band 2, 3, 4
Dance Band 4
Band Librarian 4



PHYLLIS A. BINETTE

Junior Red Cross 2
Camera Club 3



JUDITH A. BLACK

Classical Club 3, 4
Junior Red Cross 3, 4



INA C. BLACKER

Glee Club 2, 3
World History Club 3, 4
German Club 3, 4
Science Club 4



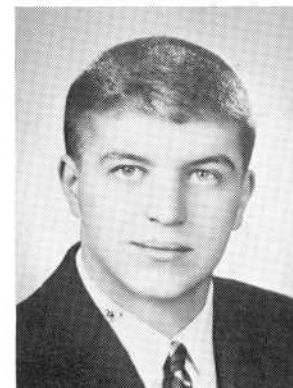
MURIEL C. BLAIS

National Honor Society 4



LUCIENNE Y. BLANCHETTE

Nurse's Aide 1

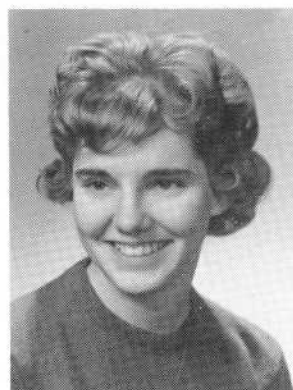


NORMAN NAPOLEON BLEAU JR.

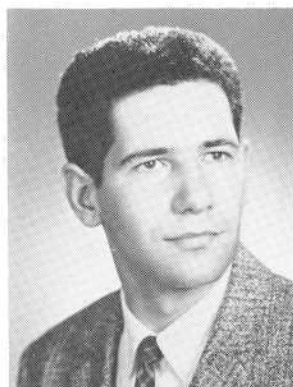
Home Room Director 2
Glee Club 2



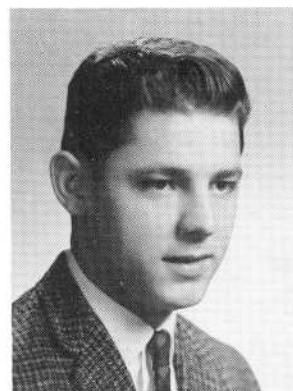
RAYMONDE A. BLEAU
Speakers' Bureau 4



SUZANNE C. BOARDMAN
Dramatics Club 4
World History Club 4



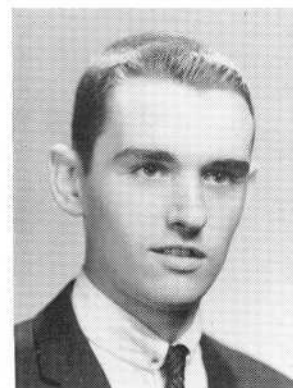
DAVID BONAS
National Honor Society 4
Home Room Director 3
Health Councilor 4



GILBERT T. BOTELHO



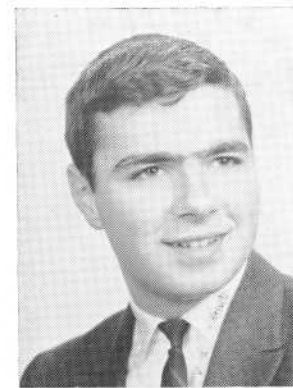
NANCY A. BOTELHO
Home Room Director 2



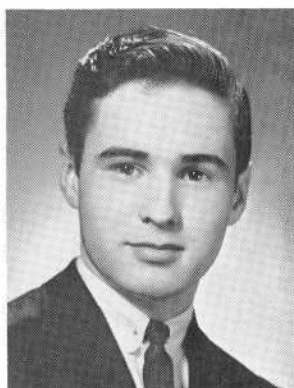
JOHN J. BOUCHARD
Traffic 2
Glee Club 3
Audio-Visual Aide 4



BERNICE M. BOUCHER
Glee Club 2
World History Club 4



RONALD A. BOULAY
Basketball 2
Tennis 2
Varsity Club 2, 3, 4



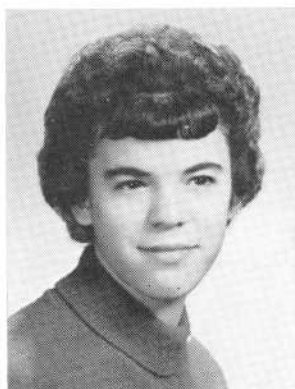
RONALD H. BOUTIN

Band 4
Orchestra 4

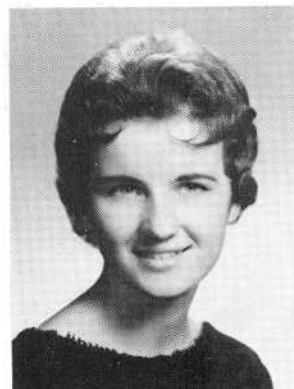


GAIL BRADBURY

National Honor Society 3, 4
Numeral Club 2, 3 Pres. 4
Science Club 3, 4
Speakers' Bureau 4
Basketball 3, 4
Mathematics Club 3



HILDA A. BRILHANTE



JOAN M. BRISSETTE

Orchestra 2, 4
Dramatics Club 3
Science Club 4



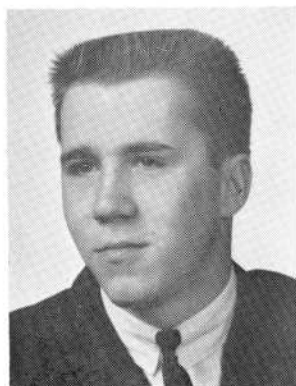
WILLIAM BROSKA

Health Councilor 2
Home Room Director 1
Football 3



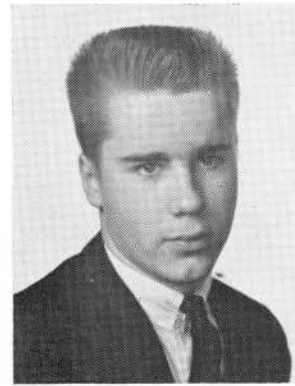
DOROTHY E. BROWNE

Science Club 4
Numeral Club 3
Dramatics Club 4
Sanitation Commission 3
Camera Club 4
Basketball 2, 3



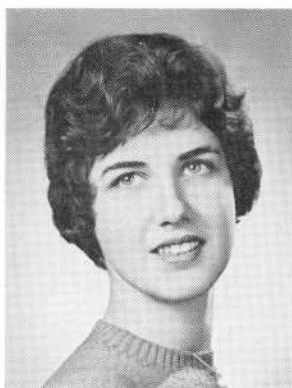
PETER J. BROWN

Home Room Director 4



STEPHEN E. BROWN

Traffic 2
Chess Club 4



ANNETTE C. BRUNEAU



NANCY C. BUBA

Hilltop Staff 4
Office Aide 4
Glee Club 2, 3



MEREDYTH JEANNE BUCKLEY

Silvertones 3, 4
Senior Mixed 3, 4
Basketball 2
Dramatics Club 2
Orchestra 1



SHERRY A. BULL

Basketball 2



JOANNE M. BURON

National Honor Society 3, 4
Science Club 3, 4
Mathematics Club 3, 4
Basketball 4
Glee Club 2
Spanish Club 2, 3



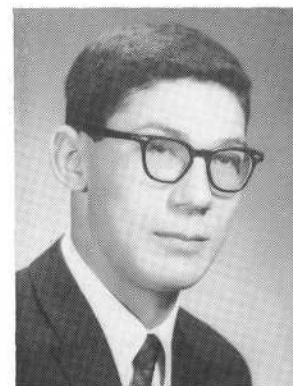
CAROL A. BURTON

Home Room Director 1



BETTY JEAN BUSSARD

Basketball 2

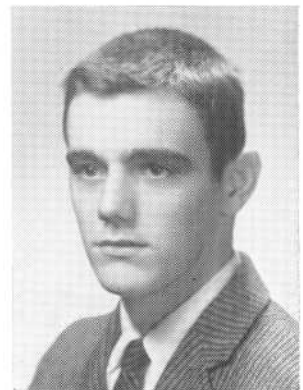


ANTONIO M. CABRAL

Band 1, 2, 3 Asst. Bus. Mgr. 4
Orchestra 2, 3 Bus. Mgr. 4
Dance Band 2
Regional Band 4
Home Room Director 3



BARBARA J. CABRAL
World History Club 4



ROBERT CABRAL



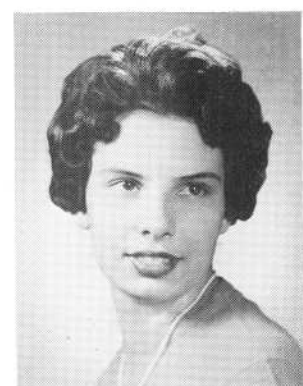
RONALD J. CABRAL



DOROTHY M. CAHILL
National Honor Society 3, Sec. 4
Classical Club 2, Vice-Pres. 3, 4
Health Club Sec. 2
Home Room Director 3, 4
Dramatics Club 2, Historian 3
Science Club 3, 4



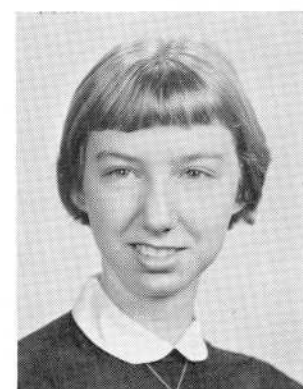
JOHN A. CAMARA
Traffic Squad 1, 2



JOYCE M. CAMARA
Glee Club 2
Portuguese Club 2, 3, 4
Office Aide 4



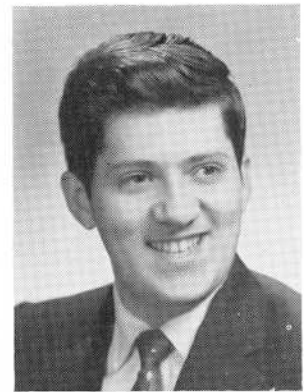
ROBERT M. CAMARA



GAIL P. CAMPBELL
World History Club 2
Cafeteria 4



EDMUND MANUEL CARDOZA



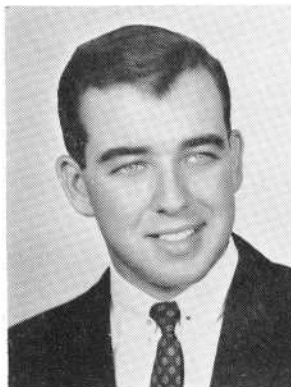
LOREN CARDOZA, JR.



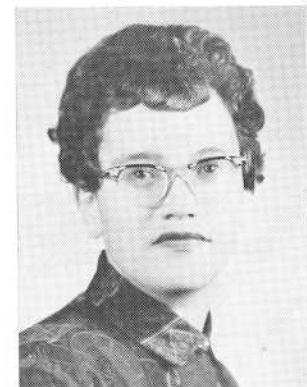
HARRY M. CARGILE
National Honor Society 4



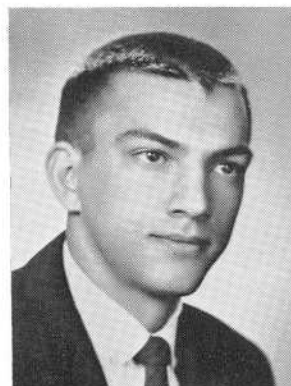
MARY CARREIRO
Glee Club 2
Portuguese Club 2, 3, 4



RONALD CARREIRO



MARILYN J. CARRITA
Glee Club 2



ROBERT E. CARVALHO
World History Club 3, 4
Office Aide 4



HENRY D. CASPER
Track 1

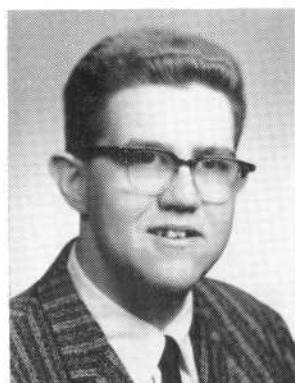


CYNTHIA R. CHABOT

National Honor Society 4
Prom Committee 3
Health Councilor 2
Basketball 2
Mixed Chorus 3
Glee Club 2, 3

STEVEN R. CHAFITZ

Science Club 3, 4
Dramatics Club 2, 3, 4
World History Club 2
National Thespian Society 3, 4
Audio Visual Aide 1
Glee Club 1, 2, 3

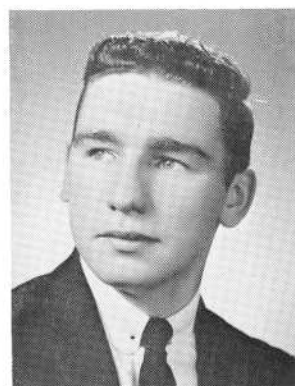
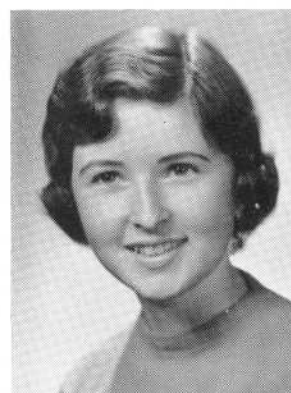


EDWARD R. CHAMPLIN

National Honor Society 3, 4
Student Council 2, 3, 4
Science Club 3, 4
Mathematics Club 2, 3, 4
Speakers' Bureau 2, 3, 4
Classical Club 2, 3, 4

HARRIET C. CHASE

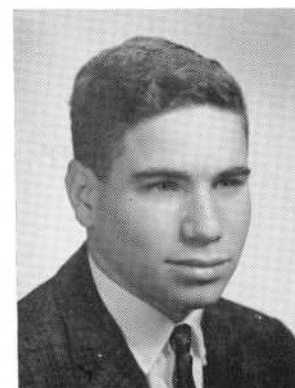
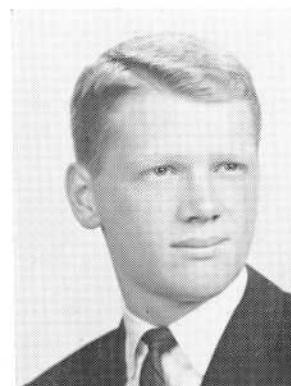
Basketball 2
Basketball Coach 3
Numeral Club 3, 4
Badminton 3
Fistball 3



THOMAS S. CHICHILOWSKI

ROBERT W. CHLEBEK

Basketball 3, 4
Football 3, 4
Home Room Director 3
Varsity Club 3, 4



HARVEY J. CHOPP

Classical Club 2
Glee Club 2
Mixed Chorus 2
World History Club 4
Chess Club 3, 4

NORMA J. CHOUINARD

Chwiny
Glee Club 2





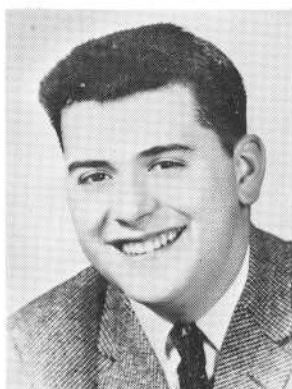
JUDITH C. CIESLA

Camera Club 2
Home Room Director 2
Office Aide 4
Mixed Chorus 3
Glee Club 2, 3
World History Club 4



JOAN E. CLARKSON

Office Aide 4



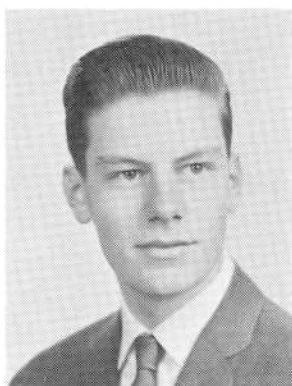
RAYMOND R. CLEMENT

Ray
Mixed Chorus 3, 4
Glee Club 2, 3
Dramatics Club 3, 4
Chess Club 1, 4
Music Appreciation Club 3



PATRICIA M. CLOUTIER

Mixed Chorus 3
Prom Committee 3
Class Secretary 1



ROBERT H. CODEGA



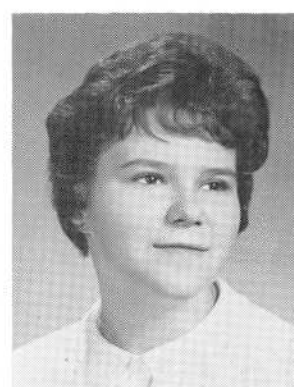
JEANNE M. COELHO

Class Secretary 2, 3
Hilltop Staff 4
World History Club 4
Home Room Director 3
Prom Committee 3



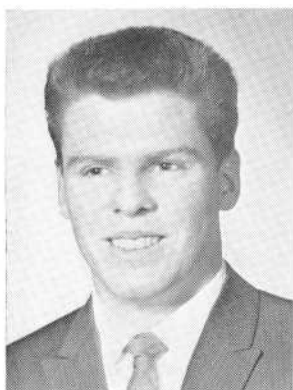
FRANK J. COLANERI

Science Club 3

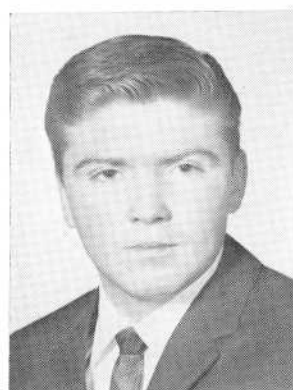


BARBARA J. CONTOIS

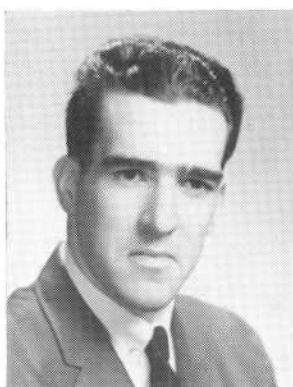
Science Club 4
Orchestra 2
Chess Club 4
Classical Club 4



ALAN J. CONVERSE
Football 4

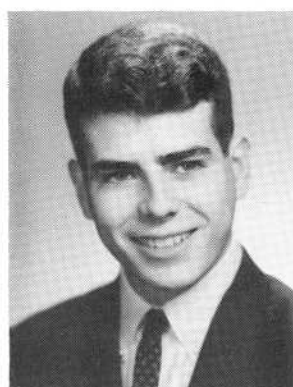


DONALD R. CONVERSE
Football 2, 3, 4
Basketball 3



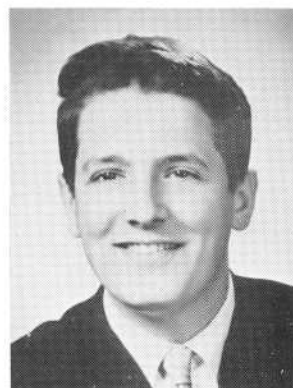
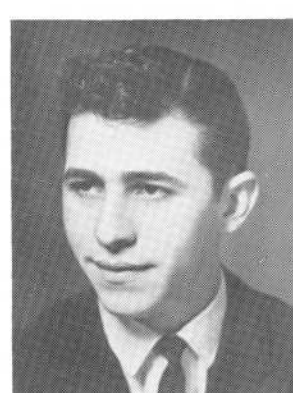
CLELAND E. COOPER

PAUL CORDEIRO
National Honor Society 4
Speakers' Bureau Pres. 4
Student Government Day Rep. 4
Hilltop Sports Editor 4
Record Book Asst. Editor 4
Spanish Club 3



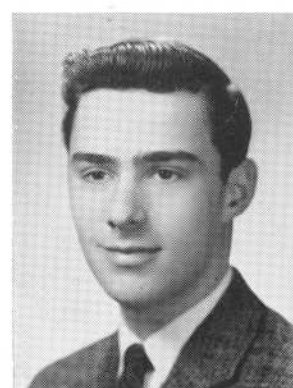
DOLORES M. CORREIA

EDWARD J. COSTA, JR.
Band 3
Orchestra 3
Ensemble 3
Dance Band 3
Pep Band 3



GEORGE T. COSTA

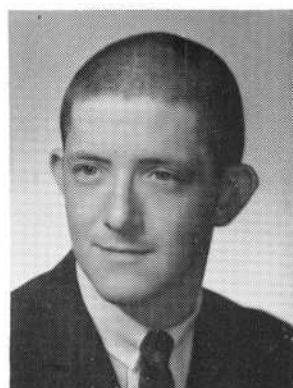
MILTON P. COSTA
Band 2, 3, 4
Mathematics Club 2





RAYMOND R. COSTA

Camera Club 2, 3, 4
World History Club 4



ROBERT J. COSTA

Basketball 1, 2
World History Club 4



RONALD V. COSTA

Track 2



THOMAS J. COSTA

T. J.
Speakers' Bureau Vice-Pres. 4
Office Aide 3
Dramatics Club 2
Health Council 2



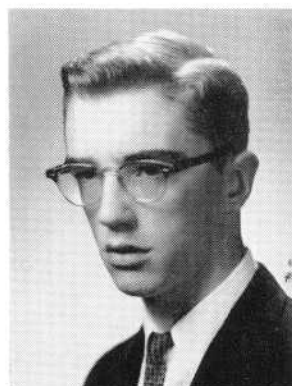
ALICE M. COTE

National Honor Society 4
Glee Club 2
Business Club 3, 4
Office Aide 4



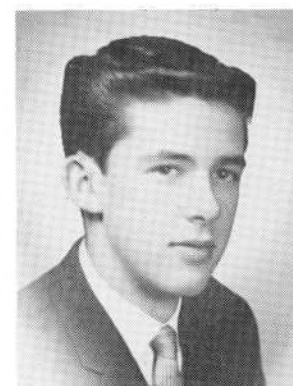
DIANE M. COTE

Glee Club 2
National Honor Society 3, 4
Business Club 3, 4
Office Aide 3, 4



JOSEPH A. COTE

Band 4
Track 3, 4
Cross Country 4
Basketball 3
Mixed Chorus 2
Glee Club 2



RONALD L. COTE



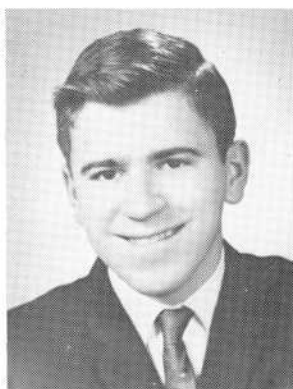
MARILYN J. COTTER

Lindy
Cheerleader 3, 4
Science Club 4
Camera Club 1, 2, 3



CAROLEE COUTO

Portuguese Club 3, 4
World History Club 4
Basketball 2
Home Room Director 1

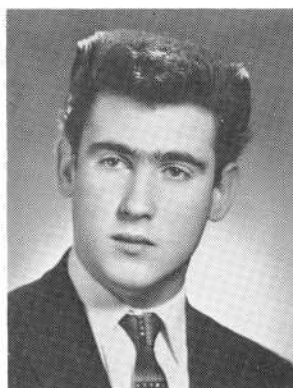


THOMAS J. COUTO

National Honor Society 4
Speakers' Bureau 4
World History Club 2, 3
Serenaders 3, 4
Glee Club 2, 3
Mixed Chorus 3, 4

JOYCE C. COVEY

Home Room Director 2
Health Council 3, 4
Classical Club 2, 3
Science Club 4
Glee Club 2
German Club 3, 4



JOSEPH C. CRAWFORD

PRISCILLA M. CROSSON

Sil
Basketball 2
Camera Club 2
Office Aide 4



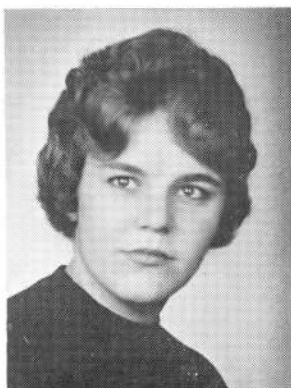
ALLAN J. CURRAN

Chess Club 2
National Honor Society 3, 4
Dramatics Club 3, President 4

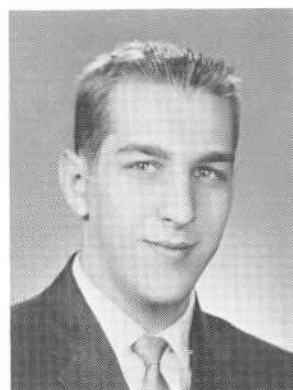
PAUL L. CUSICK

Track 4
Health Councilor 2

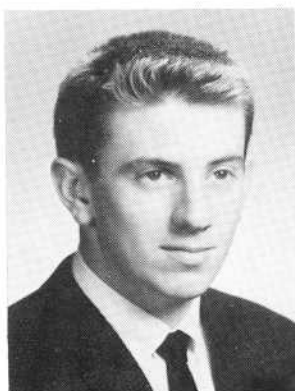




VERONICA A. CZAJKA
Glee Club 2, 3, 4



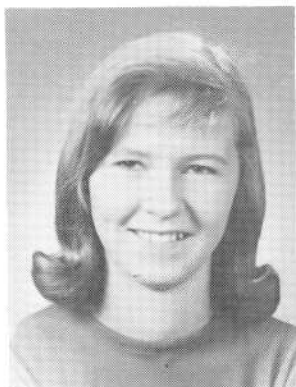
EUGENE M. CZEPIEL
Gene
Chess Club 4



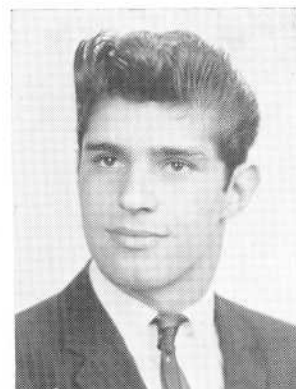
LAWRENCE J. DALEY
National Honor Society 4
Library Aide Treas. 3, Pres. 4
Science Club 3, 4
Home Room Director 3, 4



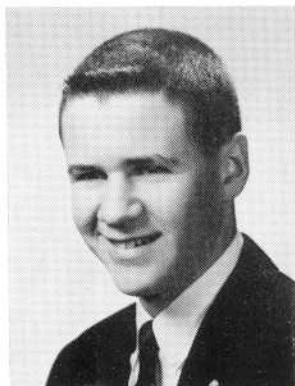
LOUIS J. D'AMICO



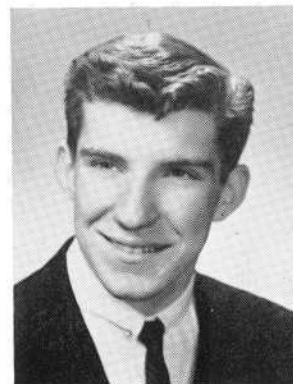
CHARLOTTE W. DARLINGTON
National Honor Society 4
Science Club 3
German Club 2



JAMES F. D'ARRIGO
Manny



STEPHEN A. DAVIDSON
Steph
Home Room Director 2
Speakers' Bureau 4



JOHN M. DELZENERO
Home Room Director 1



ANN MARIE DE MARCO

Glee Club 2



MADELINE S. DE SOUTO

Home Room Director 1, 2, 4
Business Club 3
Silvertones 4
Glee Club 3, 4
Mixed Chorus 4
National Honor Society 4



ELAINE M. DESCHENES

Glee Club 2, 3, 4
Music Appreciation Club 2
Mixed Chorus 3, 4
Silvertones 3, 4
Basketball 1, 2

JACQUELINE M. DESCHENES

Jackie
Glee Club 2, 3, 4
Music Appreciation Club 2
Mixed Chorus 3, 4
Silvertones 3, 4
Basketball 1, 2

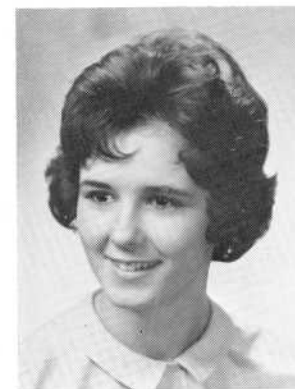


ROSE MARIE A. DESROSIERS

Basketball 2
Glee Club 2, 3, 4
Mixed Chorus 4

JOANNE A. DEWSNAP

Jo
Basketball 2
Mixed Chorus 3
Glee Club 2, 3
World History Club 4
German Club 3

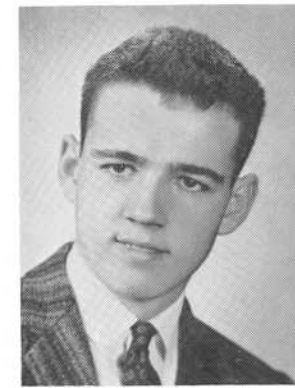


ARLENE T. DOLAN

Fistball 1
Basketball 2

ROBERT J. DOLAN

Golf 4





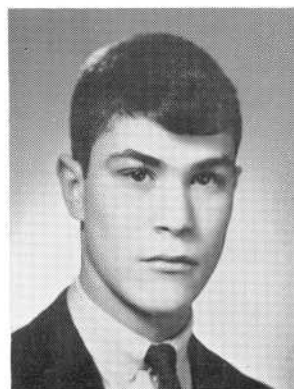
MADELYN P. DONOVAN

Pat
Basketball 2
Fistball 2



ELLEN J. DONNELLY

Basketball 2
Band 2, 3
Sanitation Commission 2
Home Room Director 3, 4
Classical Club 4



GILBERT J. DUARTE, JR.

Bank Cashier 3



DONALD DREWNIAK



MARJORIE J. DUMOULIN

Margie
Basketball Manager 4
Volleyball 2, 3
Numeral Club 2, 3, 4
Gym Leader 3, 4
Softball 2, 3
Health Councilor 1, 3

JEANNETTE A. DUPONT

Jan
Business Club 3, 4
Health Councilor 4
Glee Club 2
Office Aide 4



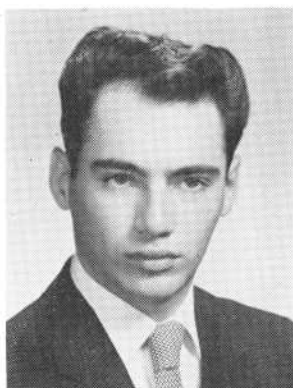
ELEANOR L. DURFEE

Ellie
Glee Club 2
Basketball 2
Speakers' Bureau 4
Camera Club 4



EVELYN E. ETHIER

Glee Club 2



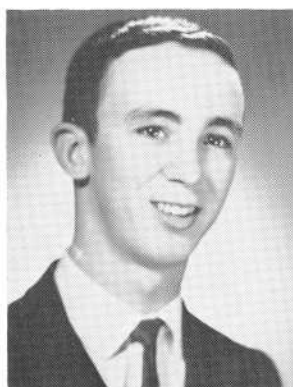
KENNETH J. FAGUNDES

Office Aide 3, 4
National Honor Society 4



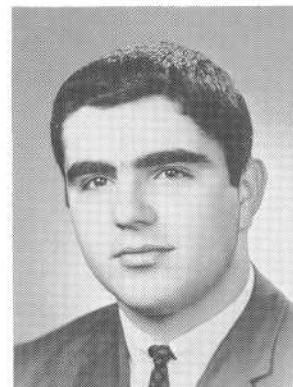
PRISCILLA E. FALANDYS

Glee Club 1, 2



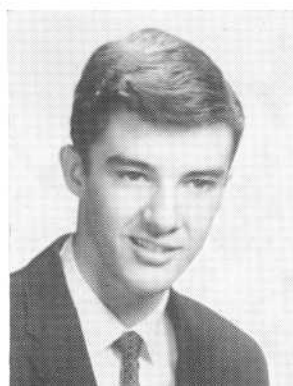
MAURICE G. FALLON

Glee Club 3
Mixed Chorus



JOSEPH D. FARIA

Home Room Director 2, 3



RAYMOND FARIA

Dance Band 2, 3, 4
Band 2, 3, 4
Orchestra 4
Pep Band 2, 3



PHYLLIS M. FASHO

Basketball 2



CAROL A. FECTEAU



BARBARA A. FELIX

Basketball 2
Junior Red Cross 2
Camera Club 3, 4
Business Club 4



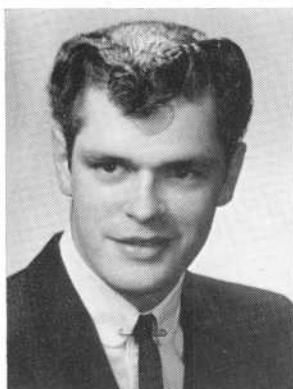
CAROLYN E. FERLAND

Carol
Business Club 3, 4
Library Aide 3, 4



ELEANOR FERREIRA

Ellie
Basketball 2
Music Appreciation Club 2, 3
Glee Club 3



JAMES J. FERREIRA

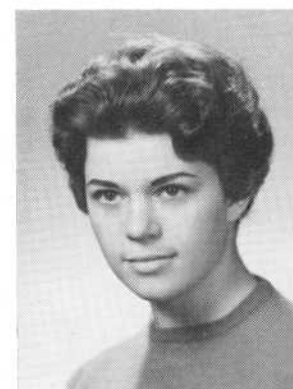
JOYCE E. FERREIRA

Home Room Director 2, 3
Numeral Club 2, 3, 4
Classical Club 2, 3, 4
Office Aide 4
Debating Society 3
World History Club 2, 4



ROBERT L. FERREIRA

Band 3, 4
Dance Band 3, 4
Orchestra 4



VIRGINIA FERREIRA

Ginny
Health Councilor 1
Business Club 4



WILLIAM A. FERREIRA

Band 3, 4
Orchestra 3, 4
Pep Band 3, 4
Camera Club 4
Cafeteria 2



RITA C. FISCHER

Thespians 2, 3
Basketball 1



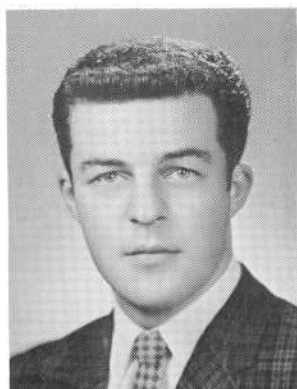
MARGARET R. FITTE

Glee Club 2
Basketball 2
Spanish Club 3, 4



JOAN A. FLYNN

Cheerleader 3, 4
World History Club 2
Glee Club 2
Basketball 2



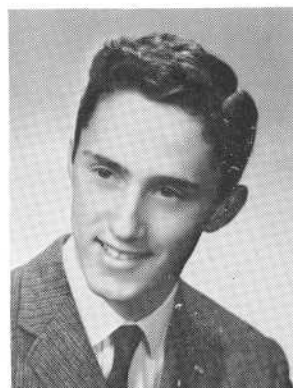
PAUL H. FORCIER



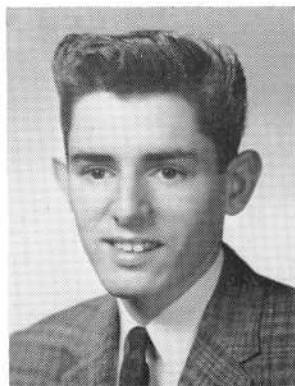
CONSTANCE N. FOSTER



CHARLES A. FREITAS



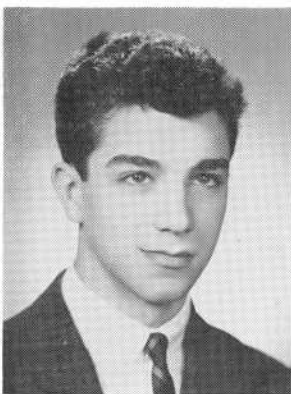
WILLIAM R. FRIAS



ALFRED FURTADO



DIANA E. FURTADO



KENNETH A. FURTADO

THOMAS F. FURTADO

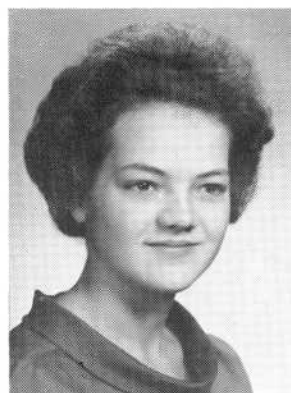
Classical Club 2, 3, 4
Mathematics Club 3, 4
Science Club 3, 4
Home Room Director 1, 3, 4
National Honor Society 4



CHARLES N. GAGNON

DORIS P. GAGNON

Glee Club 2
Business Club 4

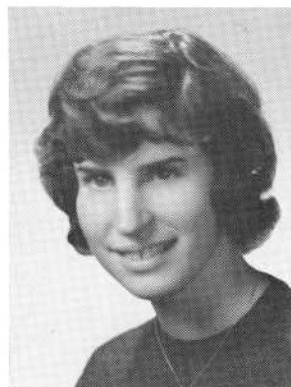


SANDRA A. GAGNON

Glee Club 2
Basketball 2

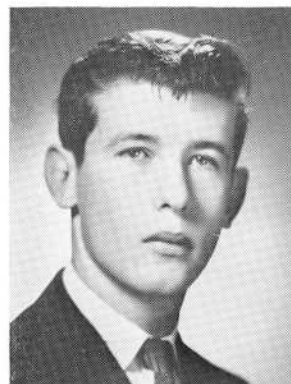
FRANCES A. GARDELLA

World History Club 2
Glee Club 2
Business Club 3, 4
Health Councilor 4
Hilltop Staff 4



VIVIAN A. GASTONGUAY

Volleyball 2
Glee Club 2
Home Room Director 2
Office Aide 4
Business Club 4

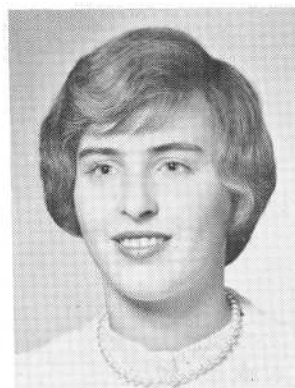


LAWRENCE GAUTHIER



JOHN G. GEBSKI

Classical Club 3, 4
World History Club 2, 3, 4
Band 2
Home Room Director 4



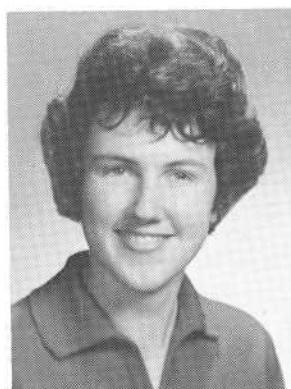
BEVERLY A. GEFFEN

Home Room Director 2
Glee Club 2
Basketball 2



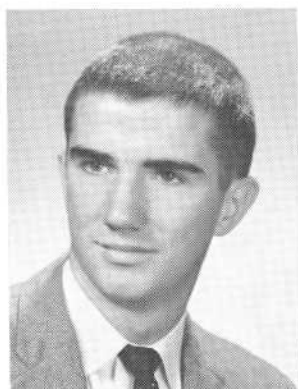
RONALD J. GEORGE

Portuguese Club 3
Science Club 4
National Honor Society 3, 4



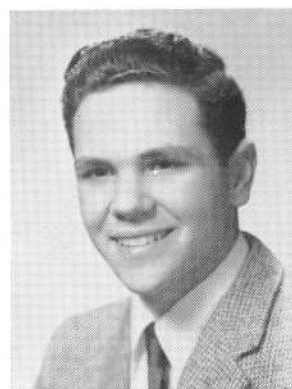
DEBORAH A. GESNER

Fistball 2
Glee Club 2
Basketball 2, 3, 4
Mixed Chorus 3
Science Club 4



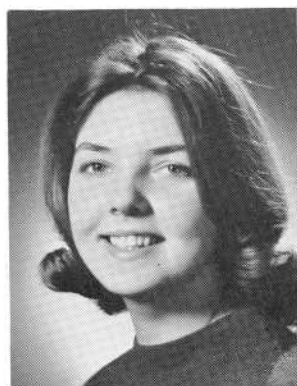
PAUL E. GIBSON

Class Vice-President 4
Student Council 4
National Honor Society 3, 4
Science Club 3, 4
Mathematics Club 4
Varsity Club 4



THOMAS C. GIBSON

Science Club 4
National Honor Society 3, 4

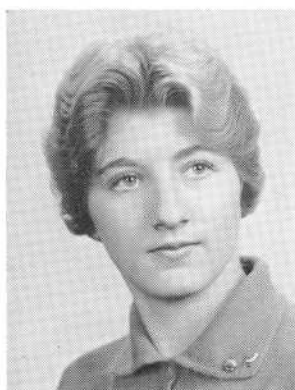


LINDA S. GIFFORD



ARMAND J. GIGUERE

National Honor Society 4



LOIS GITLIN

Glee Club
Health Councilor
Office Aide

KAREN B. GOLD

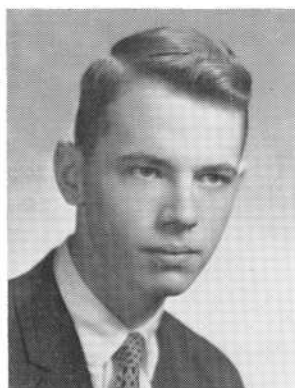
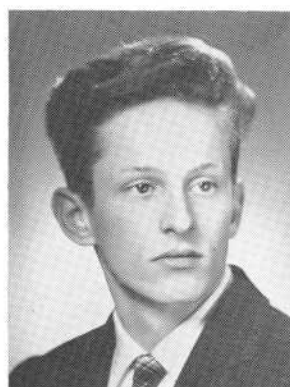
National Honor Society 4
Dramatics Club 2, 3, 4
Science Club 3
Numeral Club 2, 3, 4
Mathematics Club 4
Home Room Director 2



JANET M. GOLDEN

Glee Club 2
Basketball 2
Dramatics Club 2

EDWARD T. GOLEMBEWSKI

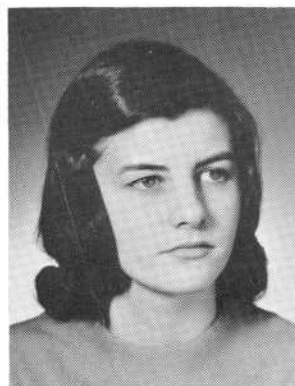
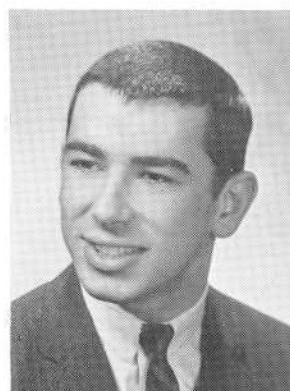


JAMES A. GOLEN

Science Club 4

RUSSELL F. GOMES

Traffic Squad 1, 2
Baseball 1
Track 1
Basketball 1
Home Room Director 2
World History Club 4



CHERYL A. GONSALVES

Glee Club 2
Basketball 2

JOSEPH D. GORMAN

Science Club 1





JUDI A. GORTON

Business Club 4
Office Aide 4



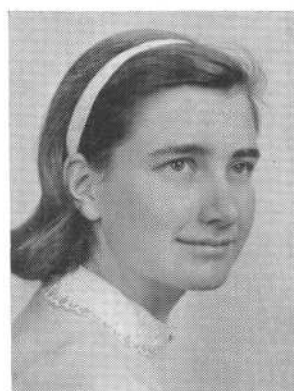
NATALIE GOVERNO

National Honor Society 4
Business Club 3, 4
Portuguese Club 2
Home Room Director 4
Glee Club 2, 3



SANDRA GRANT

World History Club 3, 4
Basketball 1, 2
Volleyball 1, 2
Fistball 1, 2



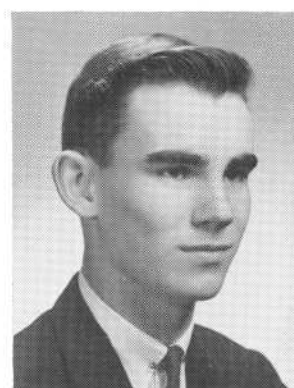
JEREMIE B. GREENE

Dramatics Club 2, 3, 4
National Thespian Society 3, 4
National Honor Society 3, 4
Classical Club 2

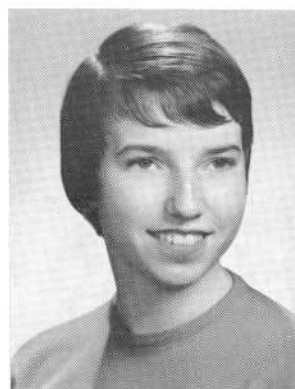


JANET C. GREENBERG

National Honor Society 4
Classical Club 2, 3, 4
German Club 2, 3, 4



CHARLES F. GREGORY



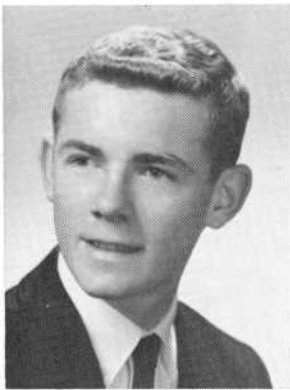
BARBARA A. GRINNELL

Basketball 2
Softball 3
Fistball 3
Numeral Club 3
Spanish Club 3
World History Club 4



ERNEST J. GUAY

Track 2
Mathematics Club 4
Science Club 4
National Honor Society 4



ROBERT H. HACKETT

PATRICIA S. HADALA

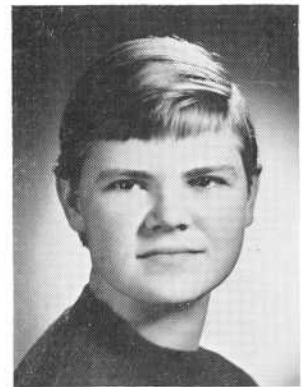
World History Club 3
Sanitation Committee 2



JAMES N. HAGUE

AILSA A. HARDING

Basketball 2, 3 Capt. 4
Numeral Club 2, 3, 4
Gym Leader 3, 4
Volleyball 2, 3
Softball 3



JAMES W. HARDING

Football 1, 2, 3, 4
Basketball 2, 3, 4
World History Club 4
Traffic Commission 4

JAMES HARRINGTON

German Club 2, 3, 4
Science Club 4
National Honor Society 3, 4
Health Councilor 4



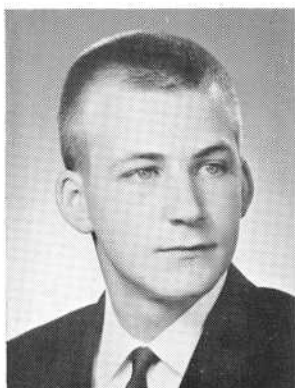
HAZEL L. HART

Glee Club 2, 3, 4

PATRICIA A. HARTNETT

Glee Club 2





KENNETH HASPREY

Audio-Visual Aide 3, 4
Dramatics Club 4



ARLENE J. HEALY

National Honor Society 4
Home Room Director 1, 4
Numeral Club 2, 3, 4
Science Club 4
Basketball 3, 4
Glee Club 2



ROBERTA H. HEALY

National Honor Society 4
Glee Club 2
Basketball 2
Badminton 3

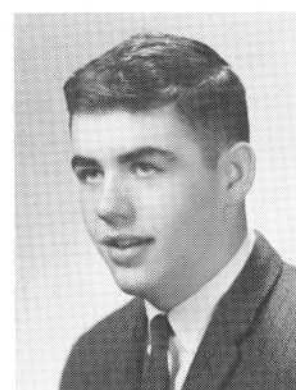


JANET F. HELGER



LILLIAN B. HEIMANN

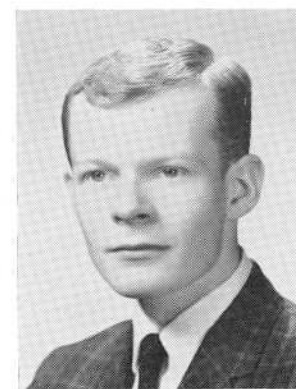
National Honor Society 4
Classical Club 1, 2, 3, 4
Glee Club 1, 2
German Club 3, 4
Junior Red Cross
Vice-Pres. 3, 4



FRANK P. HENNESSEY



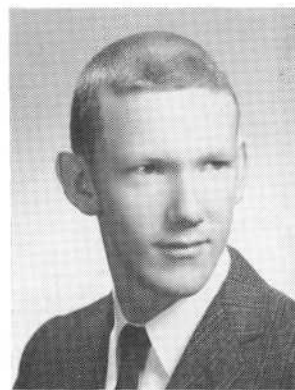
JAMES F. HIGGINS



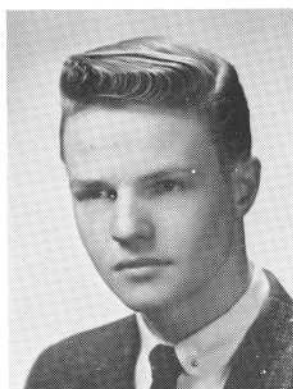
PAUL L. HIGGINS



JUDITH A. L. HOLLERAN
 National Honor Society 3, 4
 Business Club 4
 Glee Club 2
 Office Aide 4
 Home Room Director 3
 Basketball 2



JOSEPH W. HOPKINS



DONALD J. HORNBY



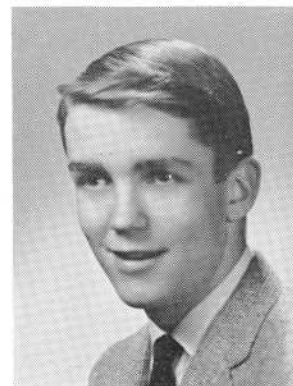
JOEL R. HORVITZ
 Health Councilor 2
 Home Room Director 3, 4



JOHN E. HOWARD



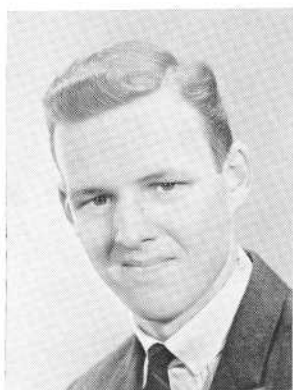
MARY I. HOWARTH
 Glee Club 2



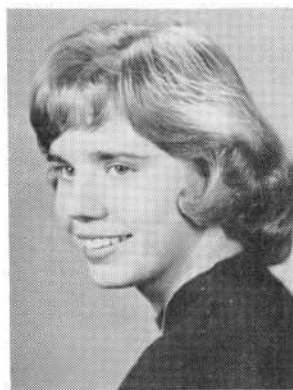
DANIEL J. HURLEY
 Sports Editor—Hilltop 4
 World History Club
 Vice-Pres. 4



WILMA HUTCHINS
 Fistball 2
 Basketball 2
 Camera Club 3, 4
 Glee Club 2, 3

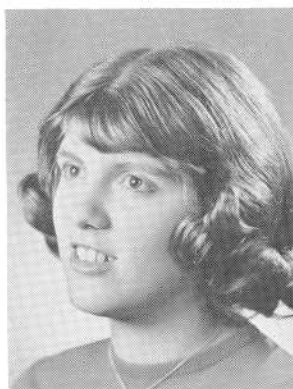


BERNARD F. IODICE



SANDRA J. IRLA

Glee Club 2, 4
Nurse's Aide 2



PATIENCE J. ISADORE

Glee Club 3, 4



CAROL ANN JACKSON



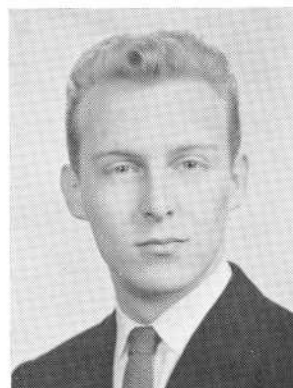
PRISCILLA JANSSEN

Home Room Director 2
Orchestra 2
Office Aide 3, 4
Business Club 4
National Honor Society 3, 4
Record Book Typist 4

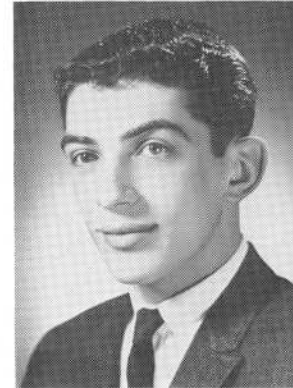


JANICE MARIE JARDIN

Basketball 2
Glee Club 2
Nurse's Aide 3

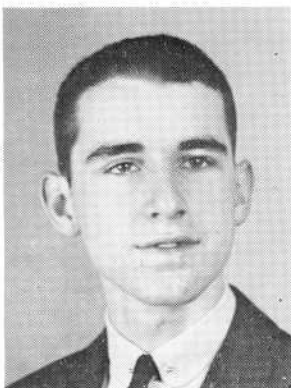


PAUL A. JARDIN



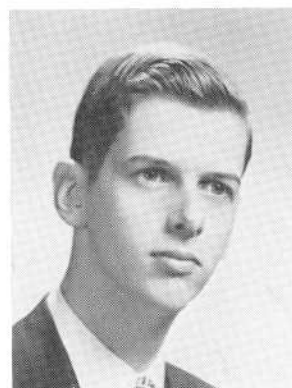
FREDERICK J. JEAN

Health Councilor 3



ROBERT W. JEAN

World History Club 3
Camera Club 3



LAWRENCE DAVID JENNEY



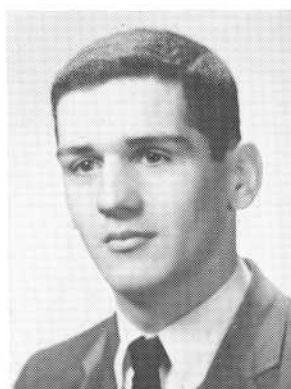
PATRICIA A. JOHNSON

Glee Club 2, 3
Mixed Chorus 3
Health Councilor 3



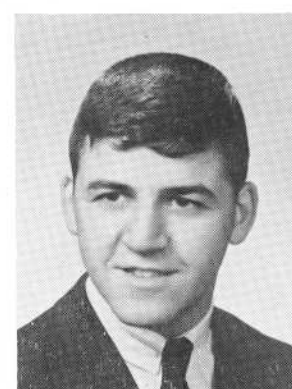
CHARLOTTE A. KALIL

National Honor Society 4
Majorette 3, 4
Student Council 4
Home Room Director 2, 3, 4
Numeral Club 2
Councilor Health Club 2



THOMAS W. KANAUSS

Dramatics Club 4



ROBERT S. KARAM

Basketball 1, 2
Baseball 1
Home Room Director 1
Science Club 4
Mathematics Club 3



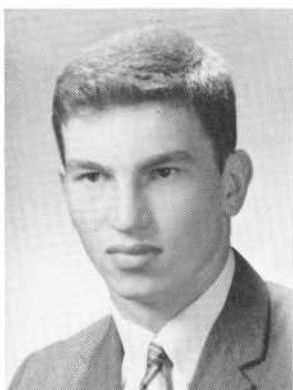
LEON E. KAY

Chess Club 4
World History Club 4
Baseball 1
Basketball 1
Glee Club 1
Football 2



KATHLEEN M. KEATING

Fistball 2
Basketball 2
Health Councilor 2, 4
Glee Club 3, 4
Mixed Chorus 4



RICHARD M. KEHOE

Football 2, 3, 4
Baseball 2, 3, 4
Basketball 2
Varsity Club 3, 4



CAROL E. KELLEY

Speakers' Bureau 4
Science Club 4
Spanish Club 3
Glee Club 2, 3
Mixed Chorus 3



SANDRA L. KELLEY

Glee Club 1
Library Aide 1



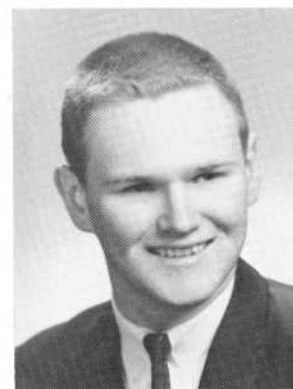
SHIRLEY A. KENNEDY

Glee Club 1, 2, 3
Mixed Chorus 3
Vocalaires 3
Science Club 4



DENNIS M. KERN

Home Room Rirector 4

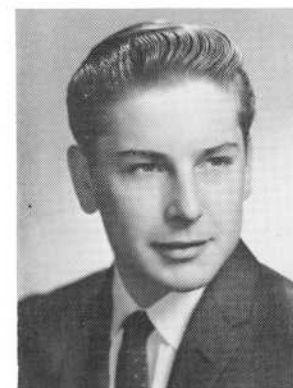


MATTHEW KIERON

Classical Club 2, 3, 4
Library Aide 4
National Honor Society 3, 4



HENRY KLEK



STANLEY J. KWARCINSKI



GUY RAYMOND LAGACE



CAROLYN A. LAMBERT

Basketball 2
Glee Club 2
Business Club 3, 4
Office Aide 4
National Honor Society 4

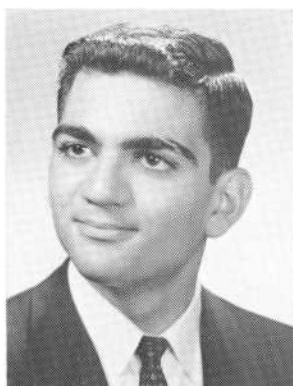


DONALD LAMBERT



ANN MARIE LAROCHE

Basketball 2
Camera Club 3, Vice-Pres. 4
Glee Club 2, 3
Junior Red Cross 2



LAWRENCE P. LATAIF

National Honor Society 3, 4
Debate 2, Sec. 3, Team 3
Home Room Director 1, 2, 3, 4
Business Manager Record Book 4
Mathematics Club 2, 3, 4
Classical Club 2, 3, 4

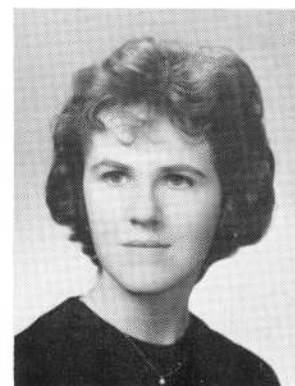


MARILYN L. LEDUC



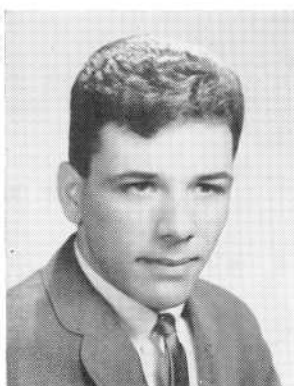
NATALIE M. LEITE

National Honor Society 3, 4
Office Aide 3, 4
Portuguese Club 2, 3
Home Room Director 1, 2
Dramatics Club 2
Basketball 2

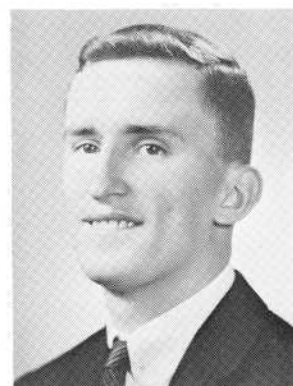


BARBARA J. LEONARD

National Honor Society 4
Hilltop Editor 4
Speakers' Bureau 4
Literary Club 1
Basketball 2



RICHARD H. LEONARDO



EDGAR J. LEPAGE



JOAN M. LEPAGE

Dramatics Club 2
Glee Club 2, 3
Mixed Chorus 3
Science Club 4



PAUL LEPAGE



ALBERT C. LEVESQUE

Basketball 1, 2
Football 3, 4
Track 3, 4
Varsity Club 4

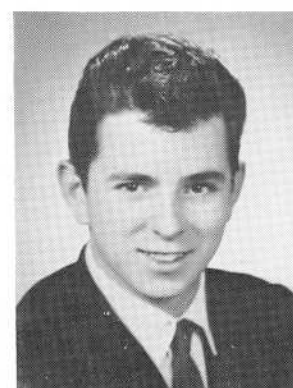


CLAUDETTE T. LEVESQUE



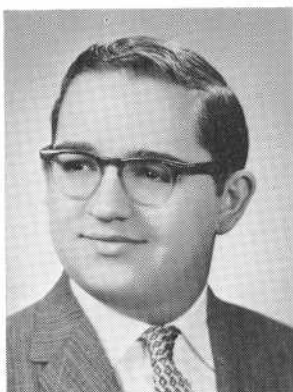
ROGER E. LEVESQUE

Speakers' Bureau 4
Hilltop Business Manager 4
National Honor Society 4



JAMES C. LIMA

Tennis 2, 3, 4
Glee Club 2, 4
Mixed Chorus 2, 4
Dramatics Club 2



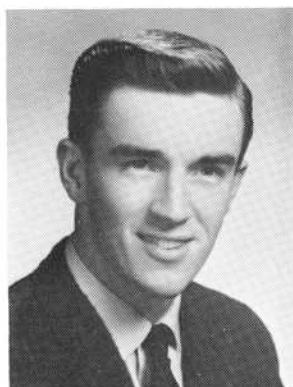
ROBERT J. LIMA

Classical Club 2
 Science Club 4
 National Honor Society 3, 4
 Mathematics Club 3, 4



PHYLLIS M. LIZAK

Business Club 3, 4
 Glee Club 2
 Office Aide 4
 National Honor Society 4



TERRANCE J. LOMAX

Baseball 1, 2, 3, 4
 Basketball 1, 2, 3, 4
 Soccer 4
 Class Vice-President 1, 2, 3
 Home Room Director 2



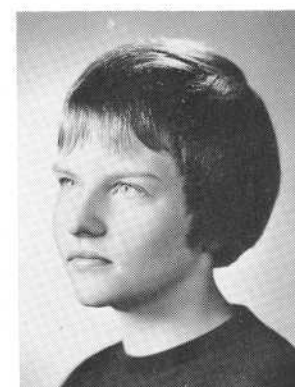
BETTE J. LONGSON

Glee Club 2
 Camera Club 2
 Vice-President 3
 Office Aide 4

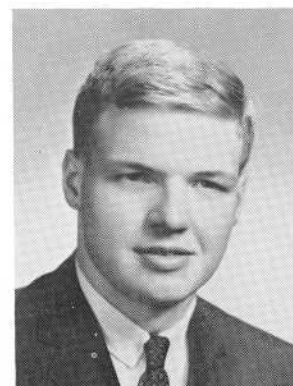


CAMILLA A. LOS

Business Club 4
 Secretary 4
 World History Club 2, 4
 Speakers' Bureau 4
 Office Aide 4
 National Honor Society 4



CYNTHIA M. LOUDON



PATRICK E. LOWNEY

World History Club 4

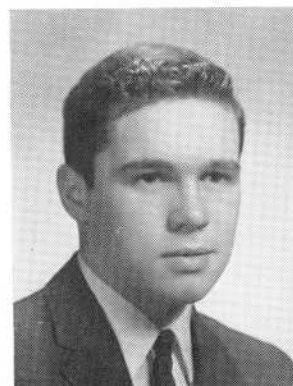


MARILYN M. LURIE

Numerical Club 2
 Science Club 3, 4
 Basketball 2
 National Honor Society 3, 4
 Badminton 2, 3



MICHAEL C. McCARTHY



JOHN L. McCORMICK

Football 1, 2, 3, 4
Track 2, 3, 4
Basketball 1
Baseball 1
Varsity Club 4



M. ELAINE MCCOY

Glee Club 2
Basketball 2
Nurse's Aide 2
World History Club 4
Junior Red Cross 4



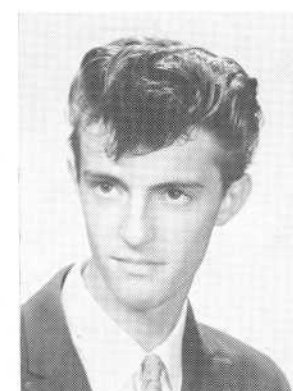
DONNA J. McCROSSAN

National Honor Society 4
Cheerleader 3, 4
Classical Club 2, 3, 4
Vocalaires 3, 4
Science Club 4
Mathematics Club 4

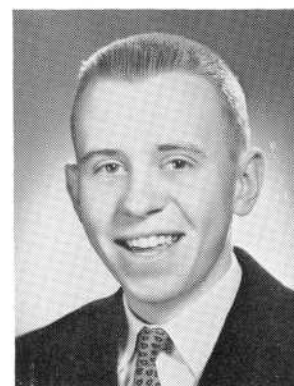


TERESA P. McDONALD

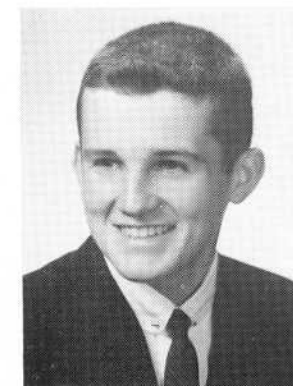
Glee Club 2
Science Club 4



FRANCIS McFALL



HAROLD W. MCGILL



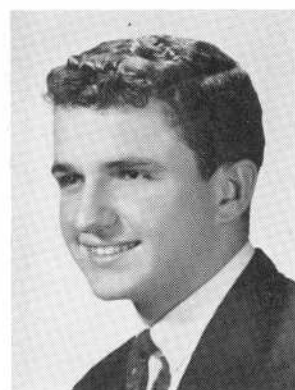
ANDREW M. McLAUGHLIN

National Honor Society 3, 4
Mathematics Club 3
Asst. Bus. Mgr., Record Book 4
Classical Club 2



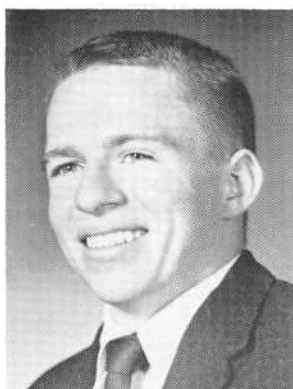
GERALD B. McMAHON

Golf 4



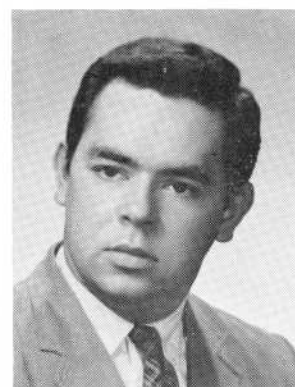
JAMES FRANCIS McMAHON

Football 2, 3, 4
Track 2, 3
Basketball 3
Varsity Club 3, 4
Home Room Director 4



JAMES HENRY McMAHON

Band 2, 3, 4
Orchestra 4
Pep Band 3, 4
Dance Band 3, 4



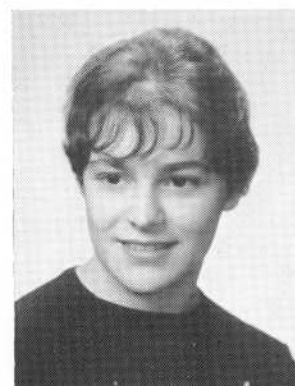
WILLIAM S. McVEY

World History Club 4



ALCIDIO L. MACHADO

Portuguese Club 2



CAROL A. MACHADO

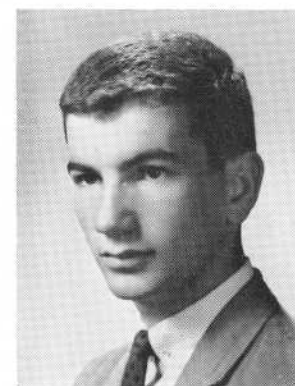
Glee Club 2
Basketball 2
Portuguese Club 3, 4
Business Club 4

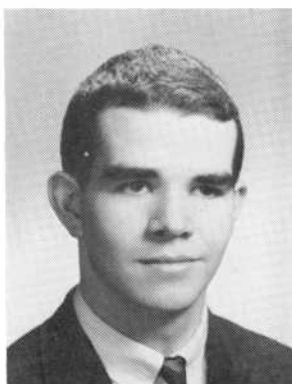


JACQUELINE MACHADO

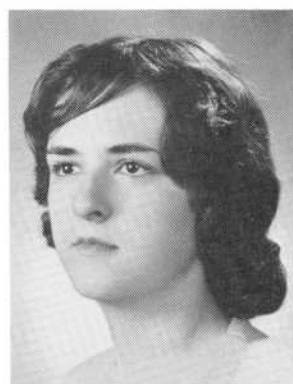
JOSEPH I. MACY

National Honor Society 3, 4
Vice-Pres., Home Room Directors 3
Health Councilor 2, 4
Tennis 2
Debating Society 4
Science Club 4





PAUL MAGEE
Glee Club 2, 3



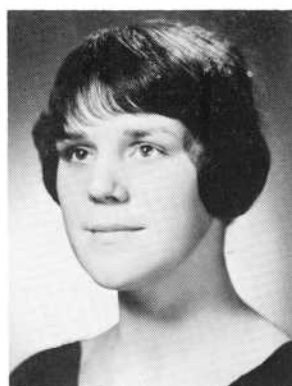
JANET E. MAILLOUX
Office Aide 3, 4



THOMAS P. MAJKUT



RAYNA A. MALTAIS
Home Room Director 4



CARMELITA M. MANNING



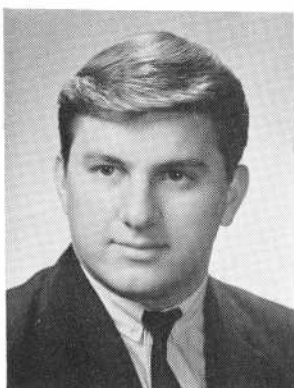
THERESA MANTEIGA
Home Room Director 1
Junior Red Cross 2, 3, 4
Business Club 3, Treas. 4
Office Aide 4
Glee Club 2
Basketball 2



ROBERT J. MARCHAND
Basketball 1, 2
Home Room Director 1
Health Councilor 3

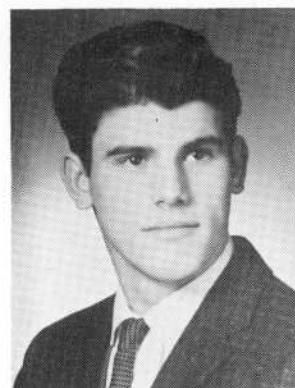


ELIZABETH ANN MARCONI
Home Room Director 2, 3
Camera Club 2, 3
Basketball 2
Glee Club 2



JAMES MARCONI

Dramatics Club 2, 3, 4
German Club 2, 3, 4
Tennis 2, 3, 4
Chess Club 1, 2, 3, 4



ROBERT E. MARTEL



LORRAINE P. MARTIN

Glee Club 2



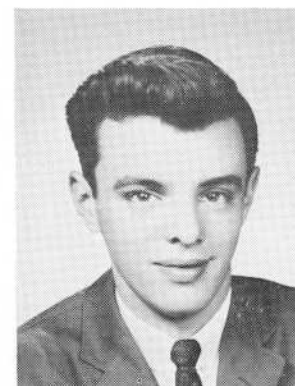
PATRICIA A. MARTIN

Silvertones 4
Mixed Chorus 3, 4
Glee Club 2, 3, 4
National Honor Society 4



SANDRA L. MARTIN

Glee Club 1
Basketball Tournament 2
Hilltop Staff 4

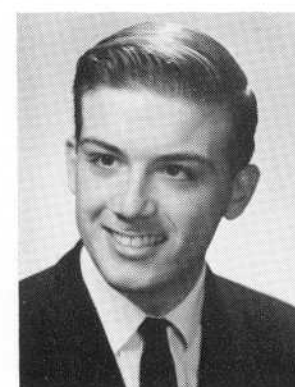


JOSEPH W. MARTINS



JOHN W. MARTINI

Band 1, 2
Chess Club 2
Classical Club 3
Health Councilor 4



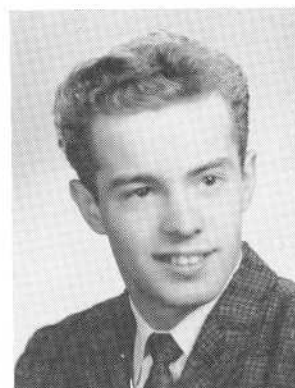
RAYMOND D. MASSON

Chess Club 1
Camera Club 3

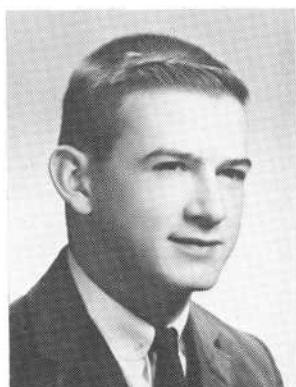


THERESA J. MATKO

Dramatics Club 2
Basketball Capt. 2
World History Club 4
Mixed Chorus 3, 4
Glee Club 2, 3
Office Aide 4

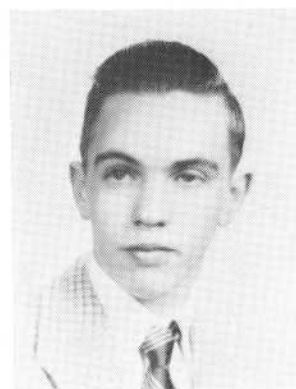


CYRIL MATTHEWS



JAMES J. MATTHEWS

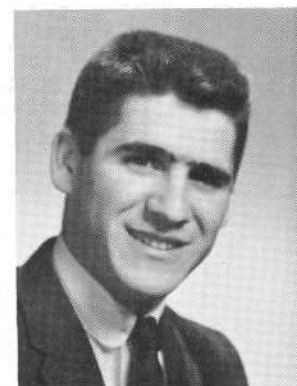
Football 2
World History Club 4
Home Room Director 3



EDWARD R. MATTOS



PATRICIA I. MATTOS



GERALD J. MAURETTI



BARBARA E. MEDEIROS

Numerical Club 3, 4
Glee Club 2
Health Councilor 1, 3
World History Club 2, 4
Volleyball 2, 3
Fistball 3



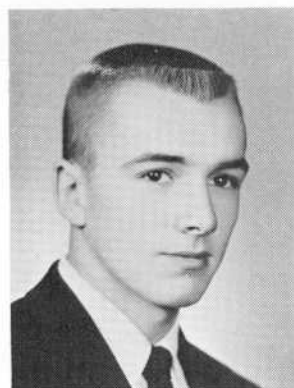
CONSTANCE A. MEDEIROS

Glee Club 2

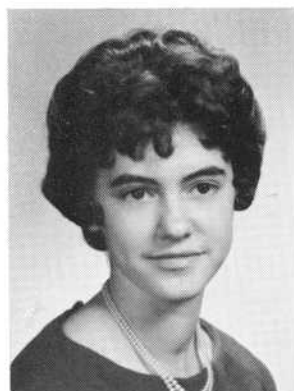


EDWARD D. MEDEIROS

Traffic 4
Office Aide 4
Health Councilor 2



JOHN S. MEDEIROS



NATALIE T. MEDEIROS

Basketball 2



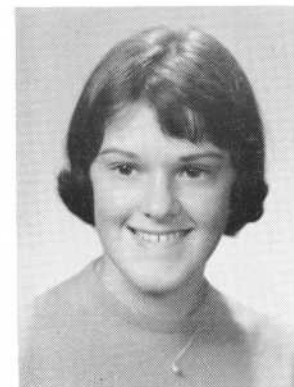
ROSEMARIE ANN MEDEIROS

Office Aide 4



EDWARD C. MEKELBURG

Chess Club 4



BEVERLY ANN MELLO

Portuguese Club 2
Glee Club 2
Office Aide 4



BEVERLY JOAN MELLO



CAROLYN A. MELLO

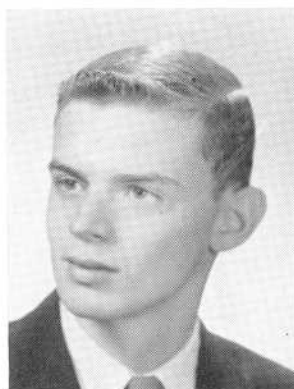
Business Club 3, 4
Home Room Director 3, 4
Prom Committee 3



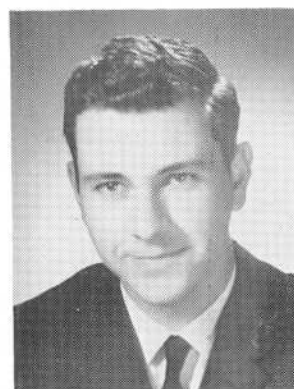
CYNTHIA A. MELLO
Home Room Director 1



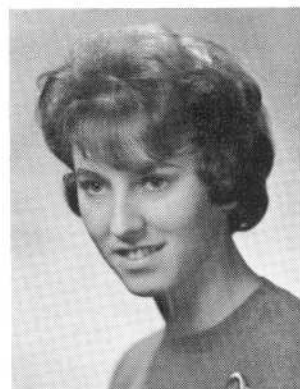
DOROTHY V. MELLO
Glee Club 2
Basketball 2



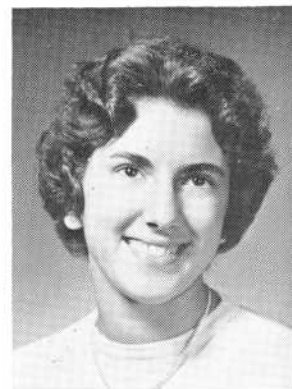
DOUGLAS MELLO
Class President 1, 2, 3, 4
Baseball 1, 2, 3, 4
Speakers' Bureau 1, 2, 3, 4
Student Council 1, 2, 3, 4
Mathematics Club 2, 3, 4
National Honor Society 3, 4



EDWARD K. MELLO
Baseball 3, 4



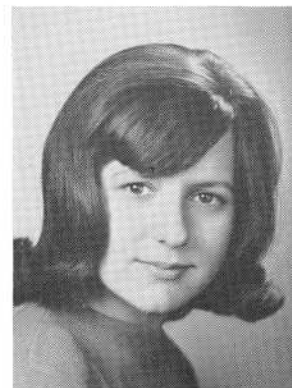
HENRIETTA C. MELLO
Glee Club 2
Office Aide 4
Portuguese Club 2



JACQUELINE L. MELLO
Glee Club 2
Basketball 2
Business Club 3



JOYCE MELLO



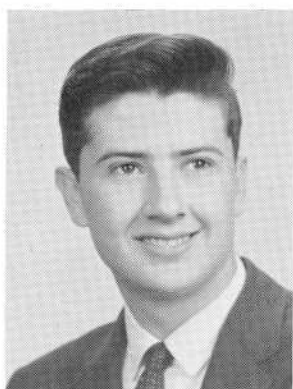
PATRICIA C. MELLO
Home Room Director 2
Health Club Vice-Pres. 3
Basketball 2
Fistball 3
World History Club 4
Glee Club 2



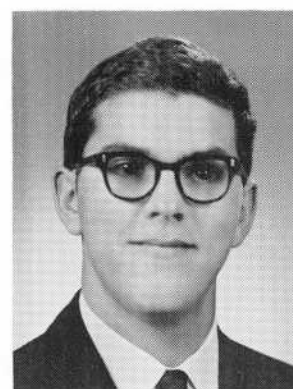
ROBERT F. MELLO



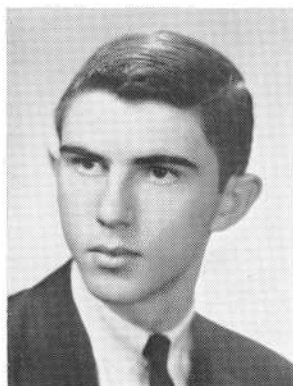
SANDRA LEE MELLO
Business Club 3, 4
Office Aide 4



EDWARD J. MENDES



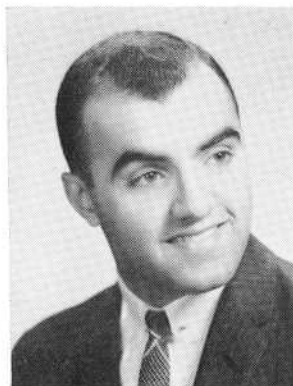
DANIEL A. MENDONCA
Camera Club 3, 4
World History Club 4
Classical Club 4
Hilltop Staff 4
National Honor Society 4



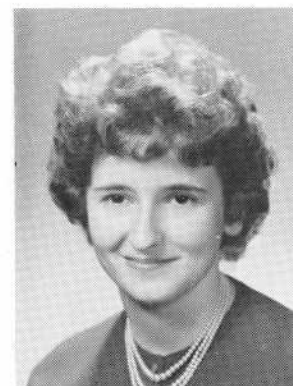
LEONARD A. MENDOZA
Home Room Director 4



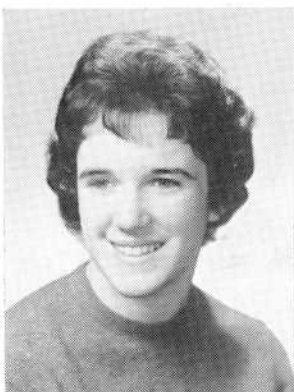
VIVIAN LOUISE MERCHANT



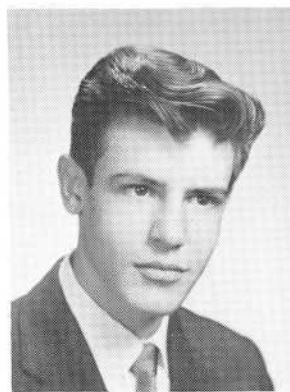
GERALD J. MICHAEL
Football 2, 3, 4
Basketball 2, 3
Track 2, 3, 4
National Honor Society Vice-Pres. 3, 4
Varsity Club 3, 4



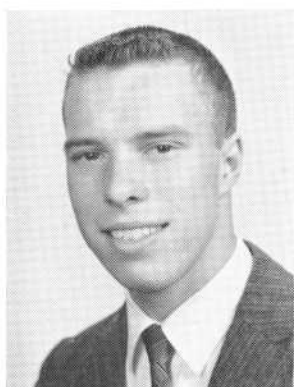
GERALDINE A. MICHAEL
Glee Club 2
Basketball 2
Business Club 3, 4
National Honor Society 3, 4
Record Book Typist 4



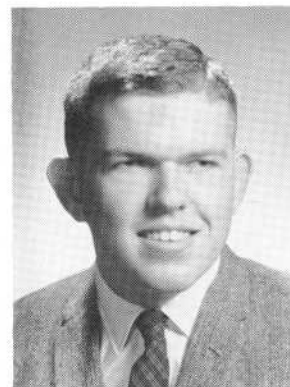
MARYLOU MICHAEL



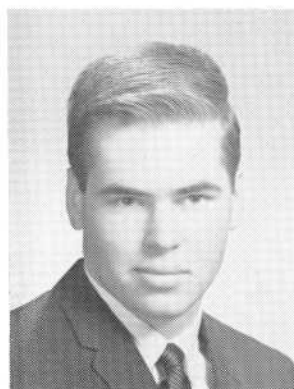
CHARLES R. MILLS



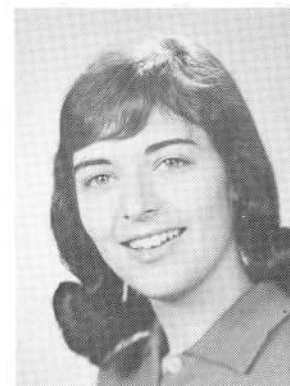
WILLIAM C. MILLS



WALTER J. MITCHELL
World History Club 4



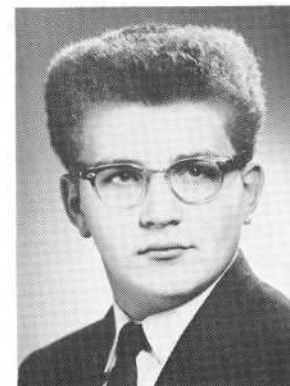
CHARLES R. MIVILLE
Dramatics Club 3, 4
Science Club 3, 4
Speakers' Bureau 4
Debating Society 3, 4
World History Club 2, 4
Football 2



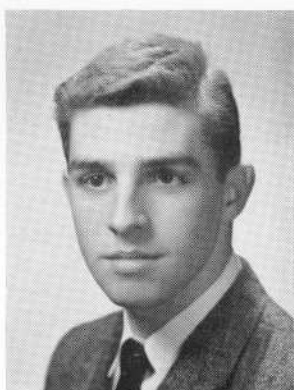
BARBARA A. MONIZ
Basketball 2
Health Councilor 2



GARLEND J. MONIZ
Band 1, 2, 3, 4
Music Appreciation Club 2, 3, 4
Ensembles 2, 4
Pep Band 2, 3, 4
Dance Band 2, 3, 4
Basketball 1



JOHN R. MONIZ
Portuguese Club 3



LEONARD M. MONIZ

Band 1, 2, 3, 4

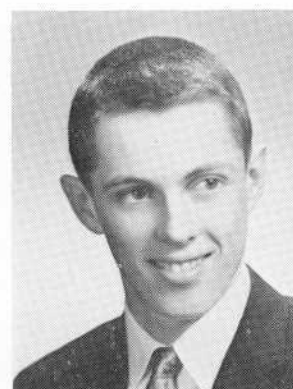


JOAN M. MONSOUR

Classical Club 2, 3
Dramatics Club 1, 2
Glee Club 2
World History Club 4
Hilltop Staff 4
Literary Club 2



JAMES M. MONTEIRO JR.



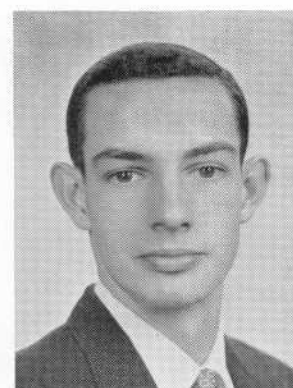
PAUL M. MOONEY

Football 3, 4
Track 3, 4
Varsity Club 4
World History Club 4



KATHLEEN L. MOORE

National Honor Society 4
Classical Club 2, 3, 4
Debating Society 3
Speakers' Bureau Sec. 4
Literary Club 2
German Club 2, 3, 4

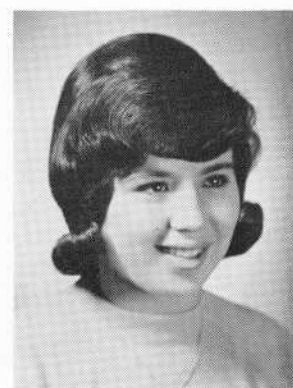


ROBERT J. MOORE



JOSEPHINE MOQUIN

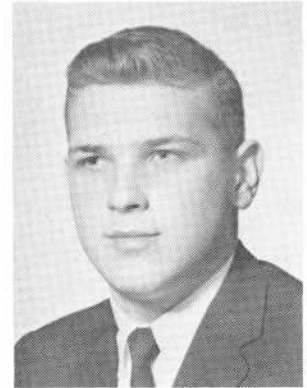
Numerical Club 3, Vice-Pres. 4
Basketball 2, 3, 4
Silvertones 3, 4
Mixed Chorus 3, Vice-Pres. 4
Glee Club 2, 3, 4
Volleyball 2, 3, Capt. 4



DOROTHY L. MOREIRA

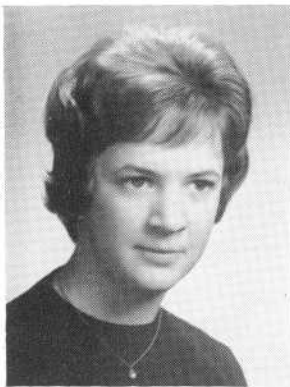


NORMAN E. MORIN



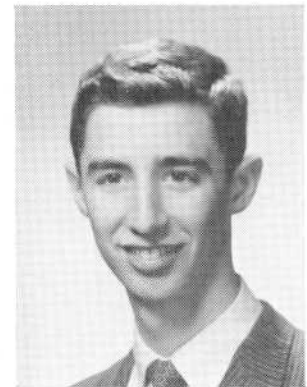
CARLTON S. MORRIS

Chess Club 3, 4
World History Club 4
Dramatics Club 4



NANCY D. MORTIMER

National Honor Society 4
Mixed Chorus 3, 4
Glee Club 2, 3
Silvertones 3, 4
Classical Club 2, 3
Basketball 2



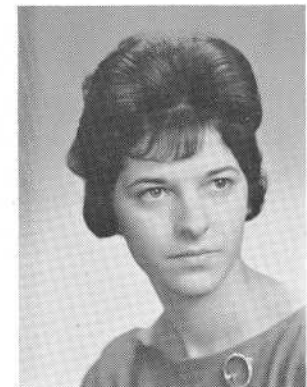
HERBERT MICHAEL MOSKOWITZ

National Honor Society 3, 4
Tennis 3, 4
Chess Club Pres. 4
Speakers' Bureau 3, 4
Classical Club 2, 3, 4
French Club 4

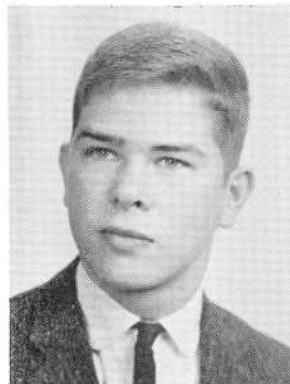


BRENDA E. MOTTA

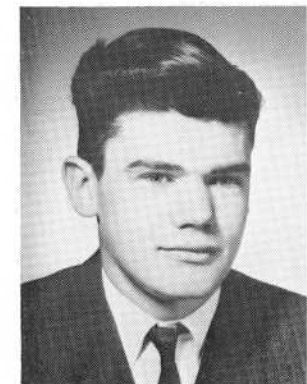
Portuguese Club 3, 4
Speakers' Bureau 4
Home Room Director 2, 4
Junior Red Cross 3
Glee Club 2



JOYCE A. MOTTA



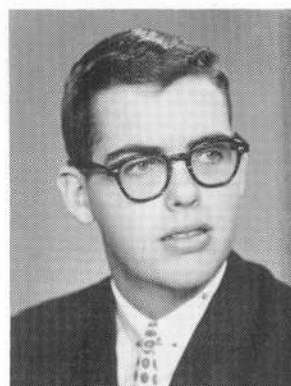
WILLIAM J. MULLEN



WILLIAM T. MURPHY



GERALD NADEAU



THOMAS R. NASSER

Home Room Director 2
Science Club 3
Physics Lab. Asst. 4
National Honor Society 4



GAIL L. NIZALOWSKI



GAIL M. NORTON

Glee Club 3, 4
Mixed Chorus 4
World History Club 4



HELENA NUNES

Library Aide 2, 3, 4
Classical Club 2, 3, 4
German Club 2, 3
Speakers' Bureau 4
Basketball 2
Volleyball 2



BEATRICE M. OLIVEIRA

Glee Club 2
Home Room Director 4
World History Club 4
Camera Club 3, 4
Basketball 2
National Honor Society 4



JUDITH A. OLIVEIRA

Portuguese Club 2



JUDITH A. OLIVEIRA

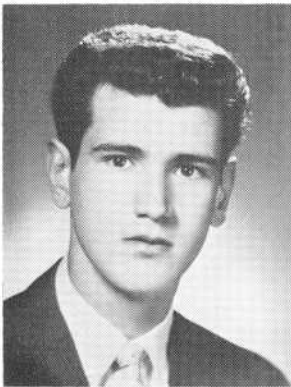
World History Club 2
Glee Club 3



PATRICIA A. OLIVEIRA



RICARDO J. OLIVEIRA



ROBERT J. OLIVEIRA
National Honor Society 4



LEONARD J. ORABONA
Camera Club 3, 4
Science Club 3, 4
World History Club 3, 4



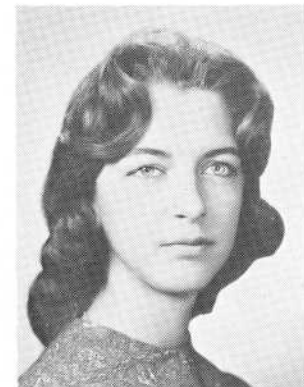
EDWARD R. ORMSTON
World History Club 2



GEORGE K. OSTAPOW
Glee Club 2



VERONICA E. PACHECO
Classical Club 2, 3, 4
German Club 2, 3, 4
Glee Club 2
National Honor Society 4



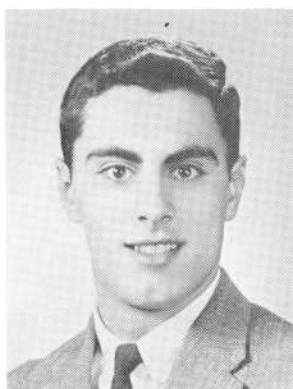
MARGUERITE J. PARENT
Glee Club 2



DENNIS J. PARISEAU

MADELEINE C. PASCOAL

Glee Club 2
Basketball 2
Fistball 2



GERALD C. PAVAO

Home Room Director 2
Portuguese Club 3, 4

RICHARD F. PAVAO

Football 1, 2, 3, co-capt. 4
Basketball 1, 2
Baseball 1
Portuguese Club 3
Track 1
Golf 2, 3

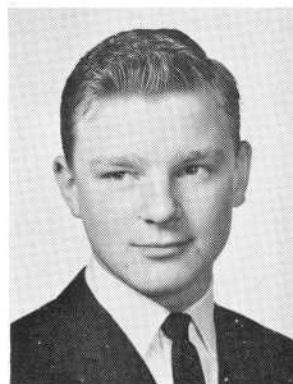
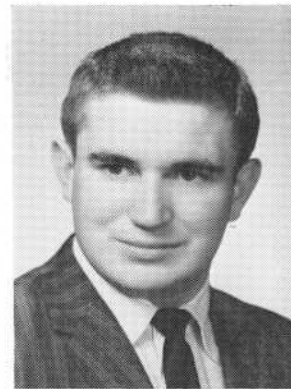


LAURA A. PEARSON

Home Room Director 2
Glee Club 2, 3
Mixed Chorus 3
Basketball 2
Office Aide 4

ALFRED E. PECKHAM

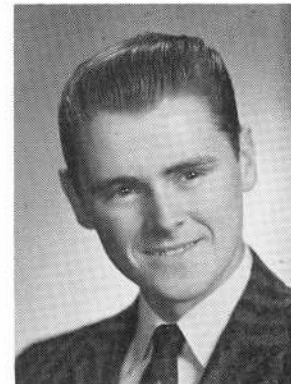
Football 3, 4

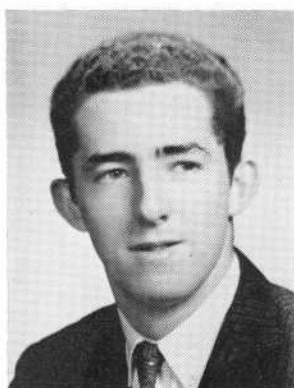


GEORGE E. PECKHAM

Glee Club 1, 2

RICHARD A. PELLETIER

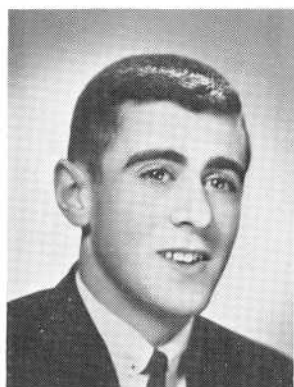




ROBERT E. PELLETIER
Glee Club 1



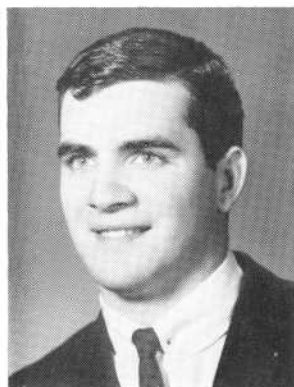
BRADFORD G. PERRY



DANIEL J. PERRY
Cross Country 4
Track 3, 4



HENRY J. PESCARINO



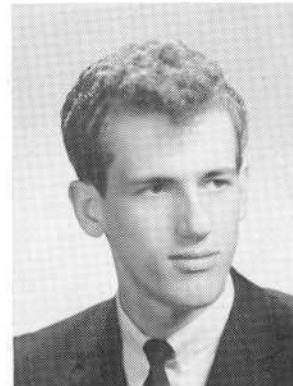
EDWARD A. PHILLIPS, JR.
Track 1, 4
Home Room Director 1



HELEN C. A. PIEKIELNIAK
National Honor Society 4
Numeral Club 2, 3, 4
Classical Club 2, 3, 4
President, Sanco 4
Health Councilor 1, 3
Volleyball 2, 3, 4



GERALD PINEAU
Varsity Club 3, 4
Basketball 1, 2, 3
Football 2, 3

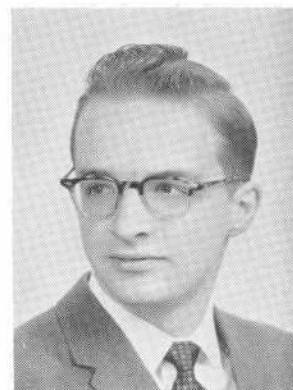


MAURICE R. PINEAULT



WAYNE D. POBZEZNIK

President, Math Club 4
 Classical Club 3, 4
 Science Club 3, 4
 Home Room Director 2, 3, 4
 Prom Committee 3
 National Honor Society 4



RICHARD POISSON



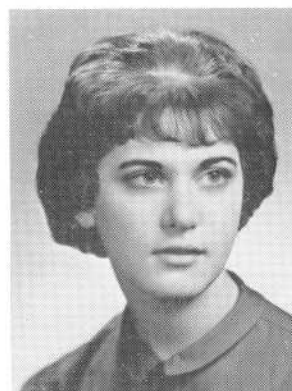
JOHN PONTE

Basketball 3



PAUL B. PONTE

National Honor Society 3, 4
 Science Club 4
 Speakers' Bureau 4



DOROTHY PORITZ

Glee Club 2, 3
 Debating Society 3, 4
 German Club 2, 3, 4
 German Club Vice-Pres. 4
 World History Club 4



ELAINE R. PROVENCAL

Softball 2



BARBARA E. QUINTAL

Camera Club 2, 4
 Speakers' Bureau 4
 Football 2, 3, 4
 Volleyball 4
 Basketball 2

ROSEMARY QUONG

Student Council Pres. 4
 Vice-Pres. 3, Sec. 2
 National Honor Society 3, 4
 Home Room Director 3
 Mathematics Club 2, 3
 D.A.R. Award





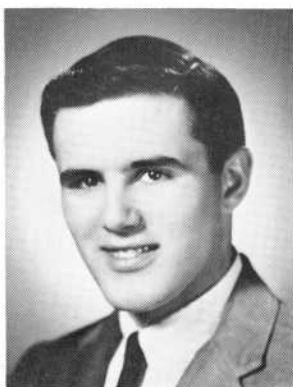
RONALD J. RAPOSA

Basketball 3, 4
Cross Country 4



CONSTANCE RAPOZA

Health Councilor 4



DANIEL RAPOZA



FRANCIS J. RAPOZA

Basketball 1
Health Club 1



LINDA M. RAPOZA

Glee Club 2
Basketball 2
Portuguese Club 2, 4



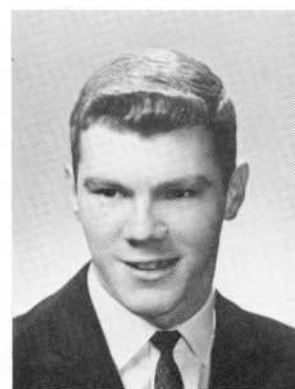
SUSAN C. RAPOZA

Glee Club 2, 3, 4
Basketball 2
Fistball 2
Business Club 3, 4



RONNA RATNER

National Honor Society 3, 4
Record Book Editor 4
Hilltop Staff 4
Home Room Director 2, 3
Spanish Club 2, 3
Student Council 1

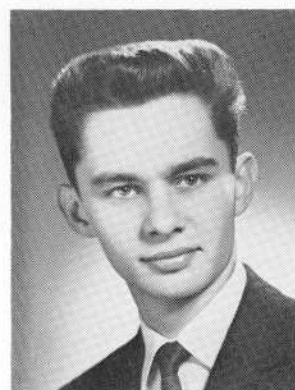


ALFRED D. REBELLO

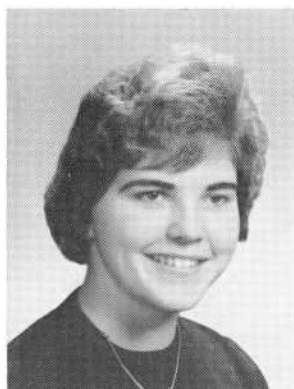
National Honor Society 4
Business Club 4
World History Club 2, 3, 4
Speakers' Bureau 4
Bank Cashier 4
Record Book Typist 4



RONALD J. REGO

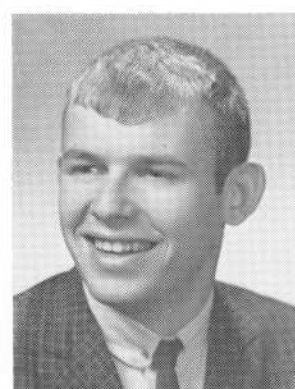


NORMAN J. RICHARD



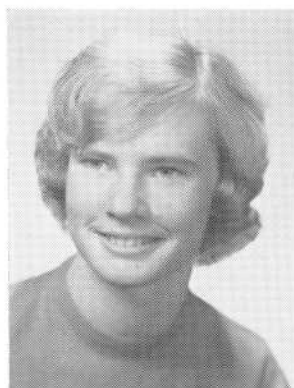
PATRICIA A. ROBB

Basketball 2
Junior Red Cross 2, 3, 4
Glee Club 2
Business Club 3, 4
Office Aide 4



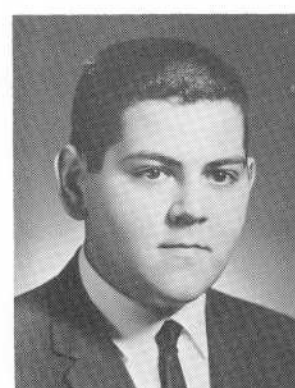
JOHN J. ROBERTS, JR.

Baseball 1
Basketball 1



LYNNE B. ROBINSON

Councilor 2
Basketball 2
World History Club 4
National Honor Society 4



EDMUND J. ROCHA



GERALDINE D. ROCHA

Portuguese Club 1, 2
Glee Club 1
Basketball 1



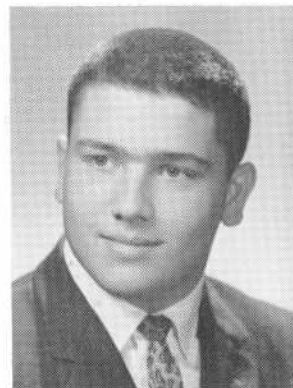
CONSTANCE A. ROCHELEAU

Business Club 4
Glee Club 2, 3
Mixed Chorus 3
Basketball 2
National Honor Society 4



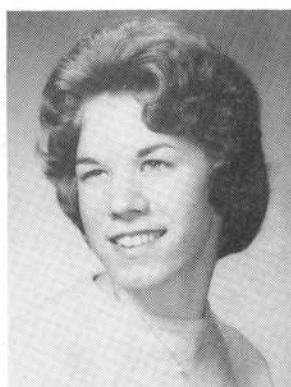
THERESA RODRIGUES

Glee Club 2, 3
Portuguese Club 2, 3



WILLIAM M. RODRIGUES

Band 1, 2, 3, 4
Orchestra 3, 4
Band Manager 4
Portuguese Club 2
Dance Band 1, 2, 3, 4
Ensembles 1, 2, 3, 4



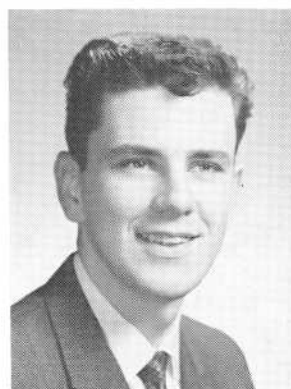
ANGELA E. ROONEY

National Honor Society 4
Business Club 3, Pres. 4
Glee Club 2
Basketball 2
Health Councilor 3
Hilltop Staff 4



MARSHALL M. ROTHMAN

Debating Society 3, 4
Science Club 3, 4
Serenaders 2
Glee Club 2, 3
Mixed Chorus 2
Home Room Director 3

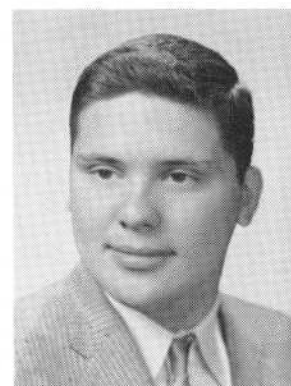


RICHARD B. ROUSSEAU



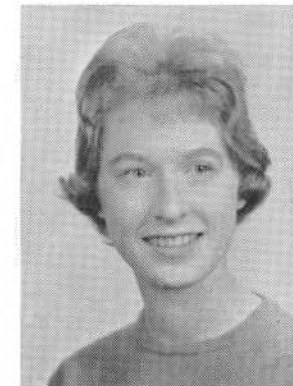
YVETTE A. ROY

Glee Club 2, 3, 4



HAROLD N. ST. JEAN

Football 2, 3, 4
Varsity Club 3, 4



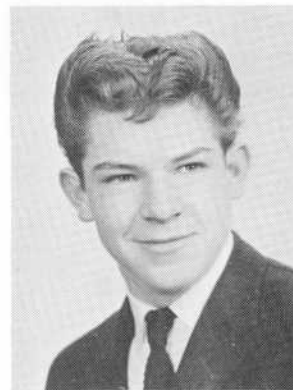
LOUISE ST. LAURENT

Pres., Honor Society 4
Student Council 4
Home Room Director 1, 2, 4
Music Appreciation 1, Sec. 2, 3
Mathematics Club 2, Sec. 3, 4
Classical Club 2, 3, 4



JOHN F. ST. LAWRENCE

Laboratory Asst. 3, 4



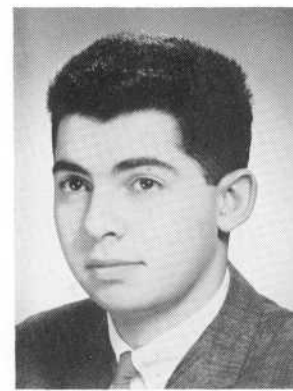
PAUL R. ST. MICHEL

Track 4



DIANA J. ST. PIERRE

Basketball 2
World History Club 2
Camera Club 2
Glee Club 2, 3, 4
Office Aide 4



WILLIAM P. SAAB



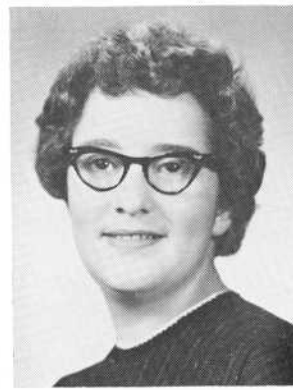
SALLY S. SAMPSON

Basketball 2
Glee Club 2
Majorette 3, 4
Home Room Director 3
Debating Society 3



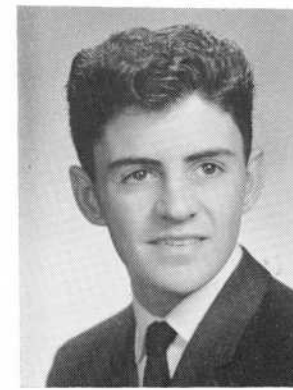
THELMA E. SANFORD

Home Room Director 2

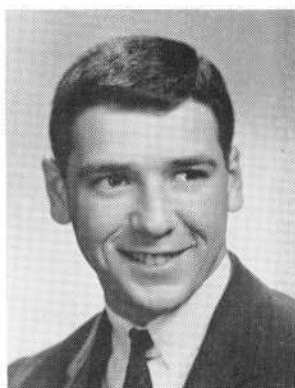


PAULINE L. SANSON

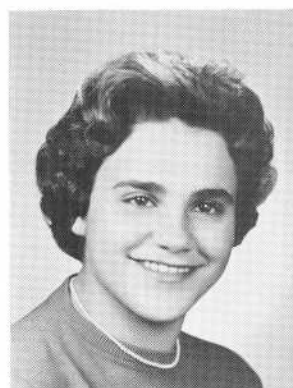
Glee Club 2, 3, 4
Mixed Chorus 3, 4
Portuguese Club 2
Silvertones 3, 4



EDWARD J. SANTOS



FRANK H. SANTOS
Soccer 4



RITA M. SANTOS
Glee Club 1
Portuguese Club



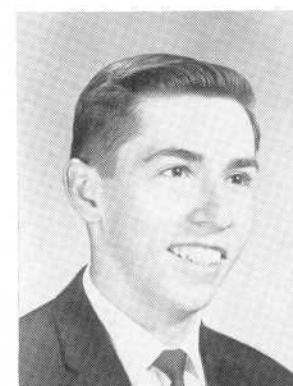
TERESA SANTOS



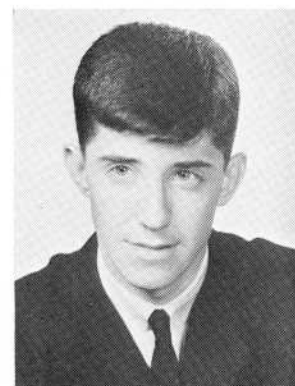
ROGER O. SARTINI
Band 2, 3
World History Club 2
Camera Club 4



BARBARA L. SAVAGE
Music Appreciation Club 2
Camera Club 4



RICHARD R. SCHENCK
Camera Club 3, Pres. 4
Track 2, 3, 4
Science Club 3
Glee Club 1
Baseball 1



KARL R. SCHNEIDER
World History Club 2, 3, 4



JUDITH A. SCHOFIELD
Science Club 4
Mathematics Club 3
National Honor Society 4

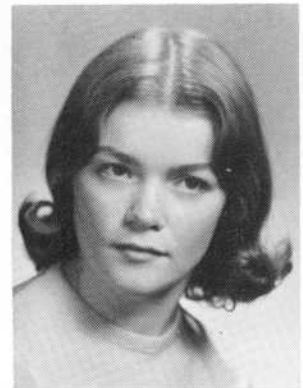


KENNETH E. SCHONGOLD

German Club 2
Chess Club 3, 4
Science Club 3, 4
Prom Committee 3

HELENE M. SCULLY

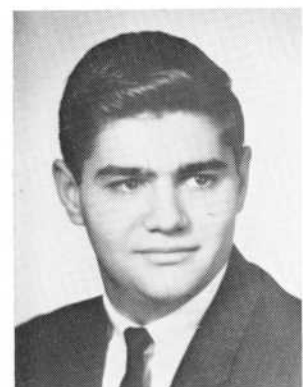
Glee Club 2, 3, 4
Mixed Chorus 3, 4
Silvertones 3, 4
Home Room Director 2
Music Appreciation Club 2



ELIZABETH L. SEARS

GERALD A. SEARS

Football 2

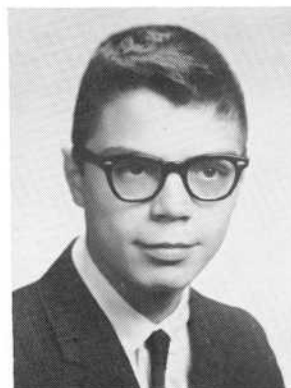


JOAN D. SEGLIN

Glee Club 2
World History Club 4

FRANCISCO S. SERINGA, JR.

Portuguese Club 2, 4
Home Room Director 3
Dance Band 2, 3, 4
Soccer 4



AIRES SERPA

Chess Club 1

HENRY C. SHAPIRO

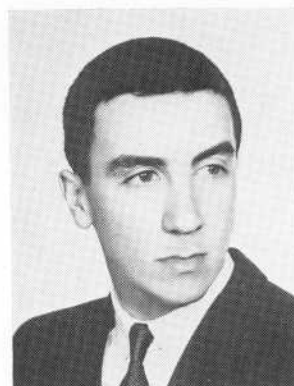
Speakers' Bureau 3, 4
Chess Club 4





JUDITH A. SHAW

Basketball 2
Cafeteria 3, 4
Camera Club 4



ARTHUR M. SHEA

Track 1
Home Room Director 1



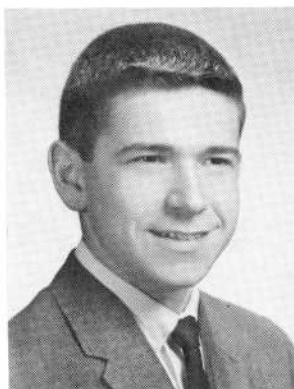
SYBIL R. SHULMAN

National Honor Society 3, 4
Numeral Club 2, 3, 4
Classical Club 2, 3, 4
Glee Club 2, 3
Science Club 4
Spanish Club 2, 3, 4



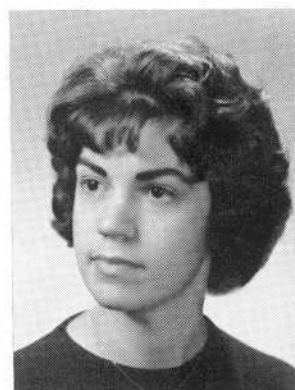
ARTHUR M. SILVA

Office Aide 3



PETER SILVESTRE

Science Club 3, 4
Home Room Director 2, 4



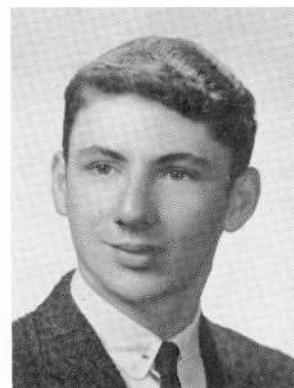
AGNES SILVIA

Bank Cashier 2, 3



DONNA M. SILVIA

Home Room Director 3
Basketball 2



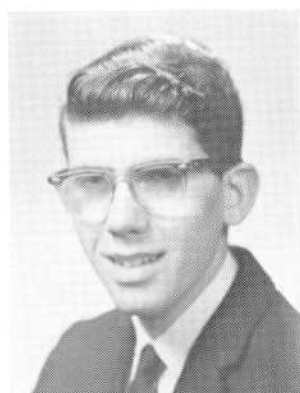
ERNEST E. SILVIA



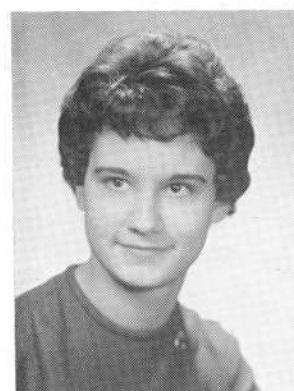
ERNEST J. SILVIA



EVELYN SILVIA



FRANCIS C. SILVIA



PAULINE M. SILVIA

Business Club 3, 4
Mixed Chorus 3, 4
World History Club 2
Glee Club 2, 3, 4
National Honor Society 4



WILLIAM S. SILVIA

Health Councilor 1



PAULINE B. SIMON

Basketball 2
Glee Club 2, 3, 4



RHONDA D. SLAVIT

Glee Club 2, 3
Debating Society 3
Spanish Club 3, 4
World History Club 2, 3, 4
Literary Club 2



MARYANN SLEDZIEWSKI

Glee Club 1



JO-ANN M. SLUSACK

Office Aide 3, 4
Home Room Director 1
Junior Red Cross 1, 2
Glee Club 2



ANNE M. SMIALEK

Glee Club 2
Basketball 2
Health Councilor 4
National Honor Society 4



SELMA A. SMITH

Numeral Club 2, 3, 4
Classical Club 2, 3, 4
Science Club 4
Debating Society 3
World History Club 4
Volleyball 2



BARBARA A. SOARES

Numeral Club 3, 4
Glee Club 2, 3
Basketball 3
Softball 2, 3
Volleyball 2, 3
Fistball 4



FLORENCE SOARES

Glee Club 2
World History Club 2
Basketball 2

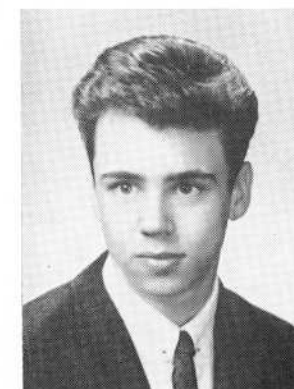


JOHN P. SOUSA



JOSEPH M. SOUSA

Home Room Director 2
Glee Club 2

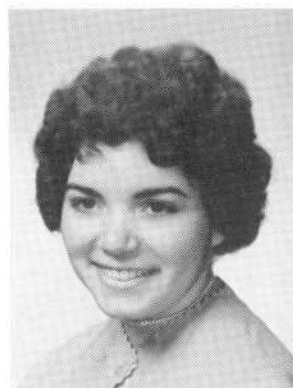


LAWRENCE P. SOUSA

Track 4



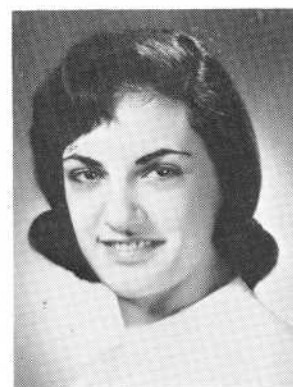
EDWINA M. SOUZA
Business Club 3
Portuguese Club 2
Home Room Director 2



JACQUELINE SOUZA
Portuguese Club 2
Glee Club 2
Business Club 4



JOAN E. SOUZA



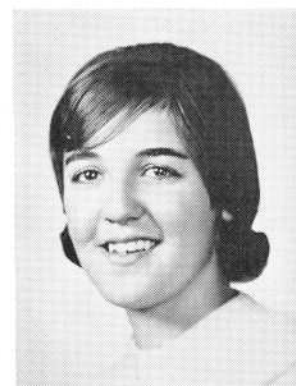
LORRAINE SOUZA
Glee Club 2



MARIE E. SOUZA
Glee Club 2



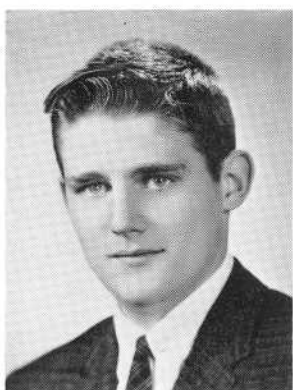
MARY P. SOUZA
Glee Club 2
Health Councilor 2



PATRICIA A. SOUZA
Glee Club 2
Portuguese Club 2, 3



WILLIAM R. SOUZA
Home Room Director 1



PAUL R. SOWERSBY
 Glee Club 2
 Mixed Chorus 2
 Home Room Director 4



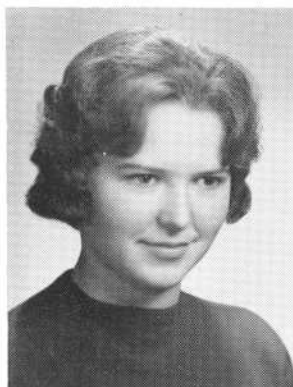
RICHARD A. SROCZYNSKI



WILLIAM P. SROCZYNSKI



BARBARA A. STAFFORD



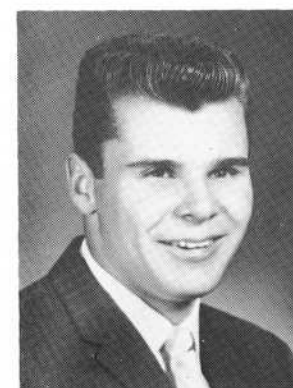
PAULA J. STASIOWSKI



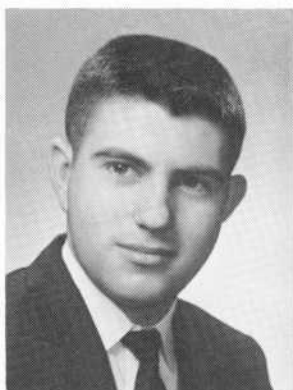
BARBARA A. STOCKLINSKI
 World History Club 4
 Glee Club 2



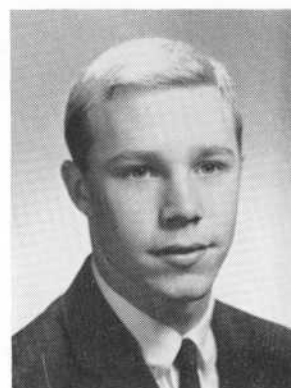
DOLORES M. STROLLO
 Home Room Director 4
 Mixed Chorus 3, 4
 Health Club Executive 3
 National Honor Society 3, 4
 Business Club 3, 4
 Library Aide 3, 4



THADDEUS J. STYS
 Band 1, 2, 3, 4
 Orchestra 1, 2, 3
 Dance Band 1, 2, 3, 4
 Pep Band 2, 3, 4



DANIEL P. SULLIVAN



JOHN J. SULLIVAN

Football 2, 3, 4
Baseball 3, 4
Basketball 2
Track 2
World History Club 4



JUDY E. SULLIVAN

Numerical Club 1, 2, 3, 4
Basketball 1, 2, 3
Gym Leader 3
Volleyball 1, 2
Fistball 2



MARYROSE J. SULLIVAN

Classical Club 4
Basketball 2
Home Room Director 3
National Honor Society 3, 4
Junior Red Cross, Sec. 1, 2
Vice-Pres. 3, Pres. 4



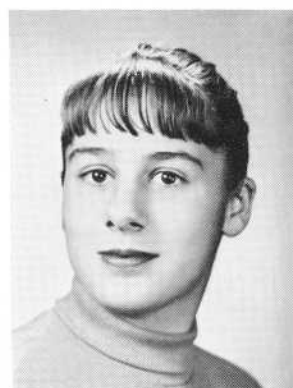
NANCY B. SUSOL

Office Aide 4
Basketball 2
Glee Club 2



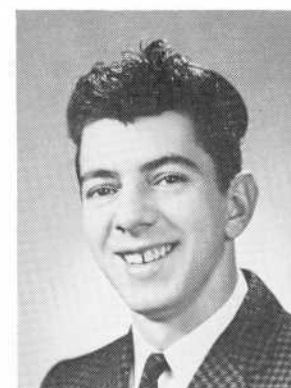
BARBARA A. SWIST

Basketball 2
Camera Club 4
Dramatics Club 4

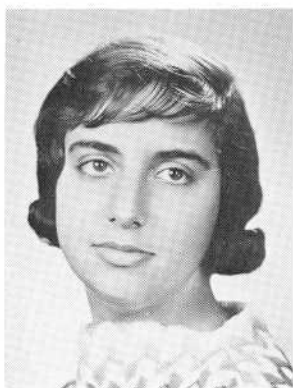


MARY LOU SYLVIA

Speakers' Bureau 4
Glee Club 3
Basketball 1
Mixed Chorus 1
Nurse's Aide 1

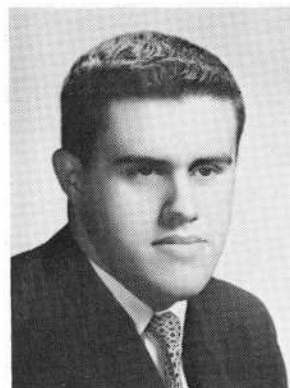


ANTONE R. TARVIS



MADELINE TARVIS

Glee Club 2
Basketball 2
Junior Red Cross 2
Business Club 3, 4
Councilor, Health Club 2



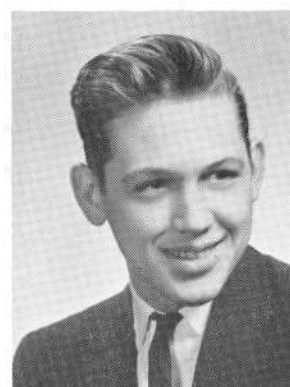
RONALD S. TAVARES

Portuguese Club 3, 4
Home Room Director 3



CAROL A. TAYLOR

Glee Club 2, 3
Basketball 2
Classical Club 3, 4
Office Aide 4



WILLIAM J. TAYLOR



CAROLYN R. TELLES

Basketball 1, 2
Volleyball 1, 2
Dramatics Club 2
Glee Club 2, 3, 4
Mixed Chorus 3, 4



GERALDINE E. TERCEIRA

Glee Club 2, 3, 4
Mixed Chorus 3, 4
Silvertones 3, 4
Health Council 2



MARGARET ANNE TERCEIRO

Home Room Director 4
National Honor Society 4



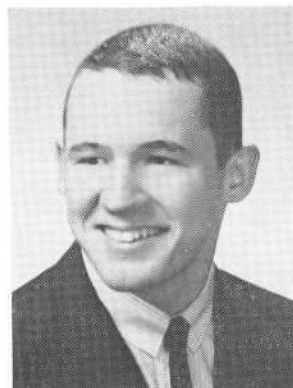
ELAINE M. TEXEIRA

Glee Club 1, 2
Portuguese Club 1, 2



MONA B. THALER

National Honor Society 3, 4
Dramatics Club 2, 3, 4
Speakers' Bureau 4
Science Club 4
French Club 4
Math Club 2, 3



RONALD THERRIAULT

Baseball 3, 4
Football 3, 4



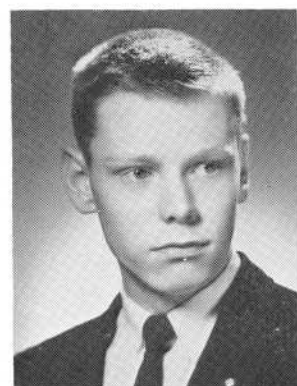
PAUL A. THIBAULT

Baseball 1, 2, 4
Basketball 1
Home Room Director 2



JOAN M. THOMAS

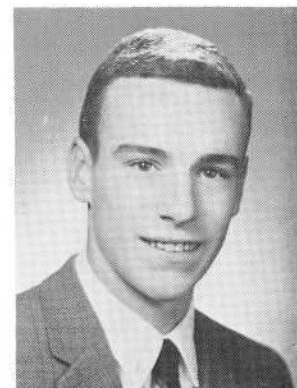
Glee Club 2
Portuguese Club 2, 3
Health Council 4



WILLIAM N. THOMAS



NORMAN M. THRAN

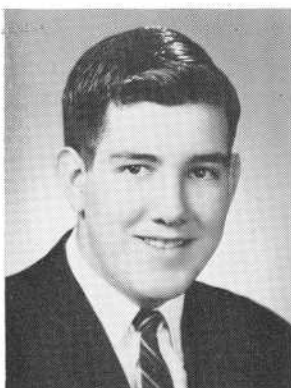


RICHARD TOOLIN

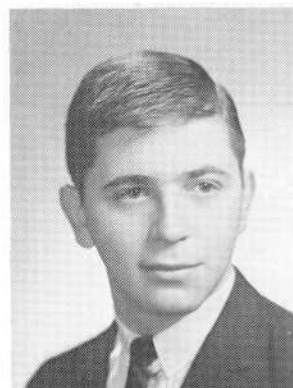


GRETA ELLEN TORNGREN

World History Club 4
Camera Club 4
Basketball 2



JAMES D. TORRES

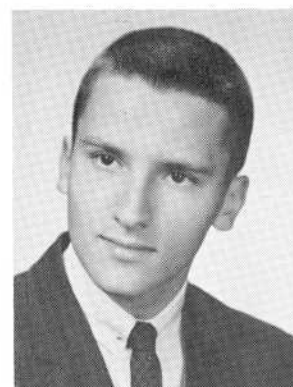


JOSEPH J. TRAVIS



MADELINE TRAVIS

Portuguese Club 2, 4, Pres. 3
Business Club 3
Glee Club 2
Office Aide 3, 4



DAVID C. TRINDADE

Science Club 3, Pres. 4
National Honor Society 3, 4
Mathematics Club 2, 3, 4
Library Aide 2, 4, Vice-Pres. 3
Tennis 2, 4
Classical Club 2, 3, 4



EDITH MAY TUNNEY

World History Club 4
Basketball 2
Volleyball 2



DIANE M. TURGEON

Glee Club 1
Basketball 2
Business Club 4



FAY R. UMBER

National Honor Society 4
Glee Club 2
Business Club 3, 4
Office Aide 4



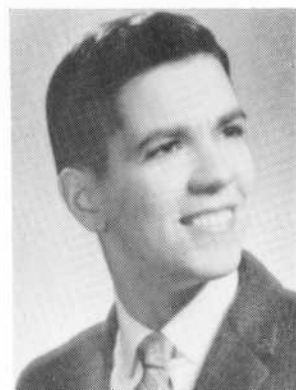
JUDY A. URBAN

Glee Club 2
Numeral Club 3, 4
Softball 2, 3
Home Room Director 3
Volleyball 2



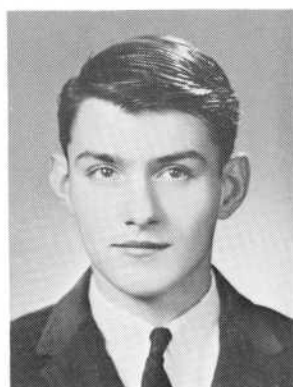
DIANE M. VAILLANCOURT

Business Club 3, 4
Glee Club 2, 3, 4
Office Aide 4
National Honor Society 4



RICHARD A. VASCONCELLOS

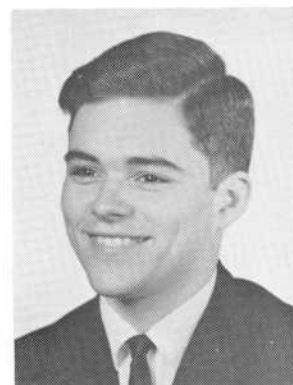
National Honor Society 4
World History Club 2, 3, 4
Business Club 4
Camera Club 3, 4
Speakers' Bureau 4
Bank Cashier 4



NORMAN J. VAUTRIN

MARINA VENTURA

National Honor Society 4
Class Vice-President 1
Home Room Director 2
Volleyball 2, 3, 4
Basketball 2, 4, Mgr. 3
Numeral Club Vice-Pres. 3



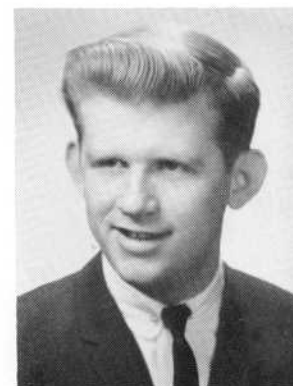
ROBERT F. VICTOR

Debating Society 4
Science Club 4
Chess Club 4



MADELINE M. VIEIRA

Glee Club 2
Portuguese Club 2

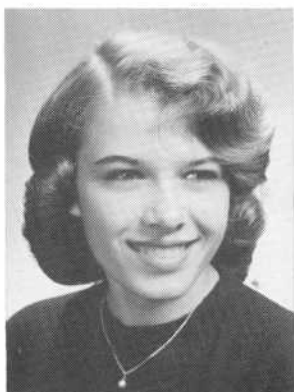


BRUCE L. VIERLING

PATRICIA A. VIVEIROS

Glee Club 2
Basketball 2





JOAN A. WAHL

Glee Club 2
Basketball 2



MICHAEL J. WALKER



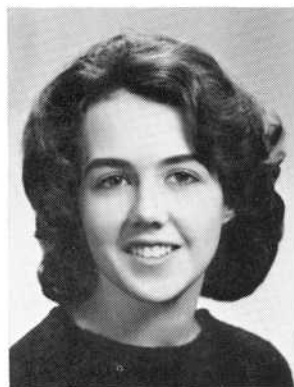
DOLLY A. WALSH

Basketball 2
Portuguese Club 2, 3



MARGARET A. WALSH

Glee Club 2
Business Club 4
National Honor Society 4



MARY J. WALSH



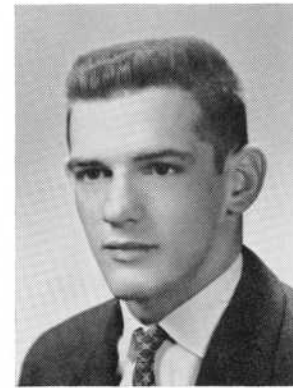
MICHAEL T. WALSH

Baseball 1
Secretary 1
Home Room Director 2, Pres. 4
Student Council 4



JO-ANNE WARD

Band 2, 3, 4
Orchestra 3, 4
Speakers' Bureau 4
Science Club 4



JAMES P. WELSH

Soccer 4



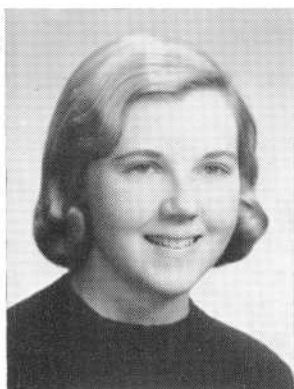
JOSEPHINE C. WEST

Glee Club 2, 3, 4
Mixed Chorus 4
Silvertones 3, 4
Basketball 2
Spanish Club 3



MARY LOUISE WEST

World History 4



ELIZABETH A. WESTGATE

Basketball 2
Library Aide 2
Glee Club 2
Mixed Chorus 3
Silvertones 3, 4
Dramatics Club 4



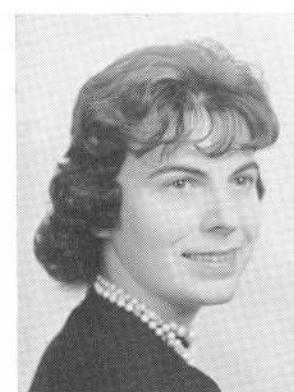
ROBERT H. WHALLEY

Football 4
Track 4

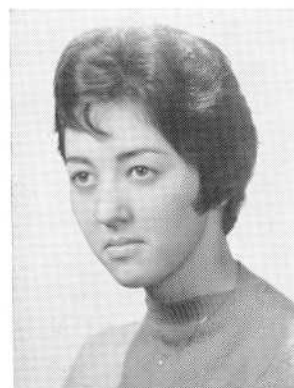


CAROL A. WILKINSON

Glee Club 2
Basketball 2
Fistball 2



ANNE E. WILSON



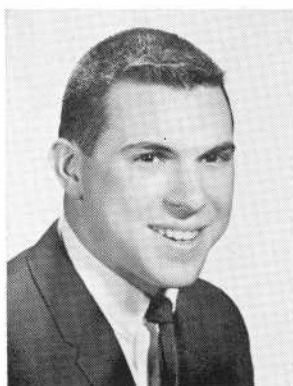
ELEANOR M. WISE

World History Club 4



IRENE J. WISZ

National Honor Society 3, 4
Business Club 3, 4
Office Aide 4
Music Appreciation Club 3
World History Club 2, 3
Fistball 2



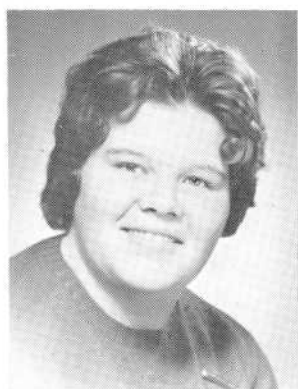
LEE WOLTMAN

National Honor Society 4
 Football 2, Co-Capt. 3, 4
 Baseball 2, 3, 4
 Basketball 2
 Sports Editor Record Book 4
 Varsity Club 2, Treas. 3, Pres. 4



GAIL E. WOODWARD

Glee Club 2
 Basketball 2
 Volleyball 2
 Dramatics Club 2
 World History Club 4
 Hilltop Staff 4



RUTH E. WRAY

Volleyball 2
 Basketball 2



ADA WRIGHT

Business Club 4
 National Honor Society 4



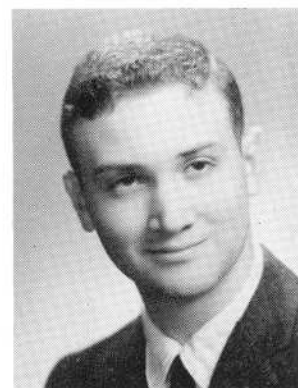
PATRICIA S. WROBEL

Sec., Science Club 4
 Classical Club 4
 World History Club 4
 Home Room Director 2
 Glee Club 2



LESLIE WYATT

World History Club 4
 Glee Club 2



STEPHEN H. YOKEN

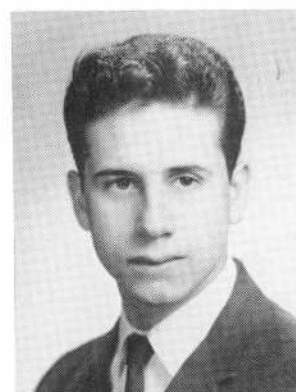
German Club 2, 3, Sec. 4
 Home Room Director 2, 3, 4
 National Thespians 4
 Dramatics Club 2, 3, 4
 Classical Club 2



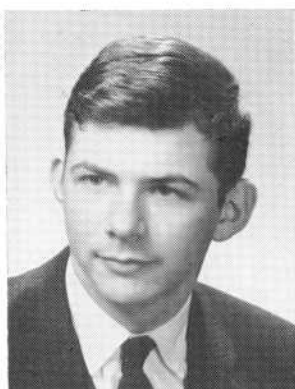
JAMES L. YOUNG



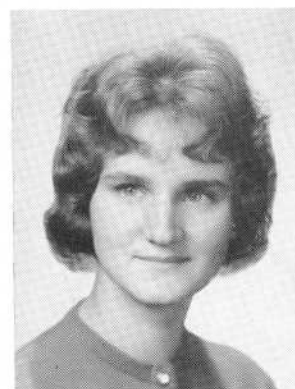
JUANITA M. YOUNG



DONALD YOUSIF
National Honor Society 4



CHARLES J. ZAJAC



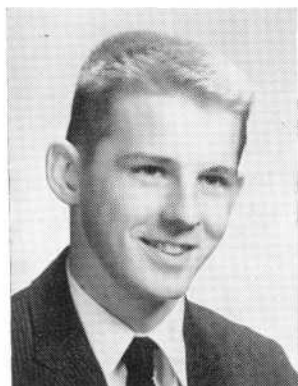
RUTH J. ZAWROTNY
Classical Club 2, 3, 4
Numeral Club 2, 3, Sec. 4
National Honor Society 3, 4
German Club 4
Glee Club 2



FREDERICKA K. ZEIDLER
Spanish Club 3, 4
Speakers' Bureau 4
Glee Club 2



EUGENIA K. ZIOTAS
National Honor Society 3, 4
Asst. Bus. Mgr., Record Book 4
Classical Club 2, 3, Pres. 4
Numeral Club 2, 3, 4
Mathematics Club 2, 3, 4
Science Club 4



JOHN S. ZUKOWSKI
Glee Club 2
World History Club 2, 4



JOAN TOUPIN

ARTHUR AMARAL
DANIEL BAILEY
DONALD BELLEFIULLE
PAUL BERUBE
GERARD BLAIS
HOWARD BONNER
ROBERT BOOTH
ALFRED BOUTIN
LEROY BUNDY
ERNEST CAROSELLI
DOUGLAS COPLEY
JOSEPH CORDEIRO
DONALD DeCAMP
EDWARD DEPIN
RONALD DESTREMP
MICHAEL DONALD
ROBERT EVANS
DAVID FITZGIBBONS
CHARLES FRIAR
BERT GALFORD
DANIEL HAYES
JOHN ISHERWOOD
RAYMOND KARNASIEWICZ
JOHN KUT
THOMAS KYDD
MAURICE LABONTE

ROBERT LEHANE
FRANK McDERMOTT
GERALDINE MACHADO
ROLAND MARTINEAU
DAVID MEDEIROS
MARILYN MEDEIROS
OLIVIA MEDEIROS
JAMES MORAN
EDWARD O'BRIEN
DAVID OLIVEIRA
GERALD PACHECO
PRESTON PAULL
ROGER PELLETIER
PAUL PENOY
ROBERT PERRY
PAUL PIERONI
JOSEPH PLOURDE
ALBERT RAGONESI
GEORGE ROCHA
JOHN SANTOS
BARRY TUROWETZ
EUGENE VINCELETTE
JOSEPH WAHL
ROBERT WILLS
ARNOLD WOOD

FRESHMEN 1957-58

The graduating class of 1961 made its first appearance in September 1957 with hopes of living down the fact that we were the lowest of the lower classmen.

Early in the freshmen year elections were held. The successful candidates were Douglas Mello, president; Marina Ventura, vice-president; Michael Walsh, secretary, and Ronna Ratner, councillor.

During this year, Durfee bowed to New Bedford 7-0 in the traditional Thanksgiving game making the win New Bedford's first since 1953.

Four teams were organized for the Freshman Basketball League. The championship was won by the Globes under the captainship of Doug Mello. Terry Lomax received the honor of high scorer with 254 points. Terry was also a member of the Bristol County championship baseball team.

Durfee Freshman basketball team was organized and it shared the title of co-champions with Morton and Lord in the Ninth Grade Tournament.

Meanwhile the varsity team had regained the title of Bristol County champions for the 10th time in the last 11 years, making them eligible to compete in the Eastern Massachusetts Interscholastic Basketball Tournament for the 14th straight year. The Hilltoppers were eliminated in the preliminary round by Salem.

Among freshmen attaining All-A honors were Joyce Cote, Arlene Healy, Lawrence Lataif, Mary Macomber, James Marconi, Robert Lima, Douglas Mello, Ronna Ratner, Louise St. Laurent, David Trindade and Eugenia Ziotas.

SOPHOMORES 1958-59

The football team completed a successful 6-1 season with a tremendous victory over New Bedford in the annual Thanksgiving Day game. Lee Woltman was the only sophomore who received a football letter.

Class elections brought many new members into office. Douglas Mello was elected president; Terrance Lomax, vice-president; Jeannie Coelho, secretary; Rosemary Quong, S.A.A. secretary; Edward Champlin and Lynne Robinson, councillors.

In basketball the Hilltoppers came out fourth in the Bristol County League and bowed out of the Tech Tourney semi-finals to Matignon High of Cambridge.

Our sophomore class topped all others for All-A honors. On the list were Gerald Bedrick, Joanne Buron, Edward Champlin, Joyce Cote, Jeremie Greene, James Harrington, Arlene Healy, Priscilla Janssen, Marilyn Lurie, Douglas Mello, Patricia Pacheco, Rosemary Quong, Constance Rocheleau, Louise St. Laurent, David Trindade and Eugenia Ziotas.

Selected as cheerleaders were Bernice Barnaby, Marilyn Cotter, Joan Flynn and Donna McCrossan. Betty Ann Bailey, Sheryll Barnes, Charlette Kalil and Sally Sampson were chosen majorettes.

JUNIORS 1959-60

This Fall the members of the Class of 1961 left the ranks of the underclassmen and became upperclassmen.

In November, members of the class were among those representing Durfee on Bob Clayton's Boston Ballroom. Fifty-two students accompanied by the late Principal Keeley and Miss Margaret Mullaney represented the school for the first time on the television show.

The Sanitation Commission held its elections in November and members of our class who were elected to major offices were Dorothy Brown, vice-president and Priscilla Braley, secretary.

David Trindade was the only member of the class to win All-A honors at the end of the first term. At the end of the second term, Dave was joined by Douglas Mello, Louise St. Laurent and Eugenia Ziotas. At the end of the third term the number of juniors on the list increased to five as the above four were joined by Priscilla Janssen.

On Feb. 15, 1960, members of the class joined with the rest of the school in mourning the death of Principal Ambrose F. Keeley. Mr. Keeley's ability and devotion to the cause of education had made him extremely popular with the students at Durfee. To perpetuate his memory, the Student Council established the Ambrose F. Keeley Scholarship.

In January, work was completed on the modern foreign language laboratory, and by April pupils of French, Spanish and German were finding the lab a tremendous help in learning to speak the languages correctly.

The Junior Prom was held May 13 at the Dwelly Street Armory. The committee planning the affair, called "The Crystal Ball" included Douglas Mello, class president; Edward Champlin, Bernice Barnaby, Rosemary Quong, Jean Coelho, James Matthews, Paul Cordeiro and Carolyn Mello.

Members of the class were greatly pleased when Edward Champlin and David Trindade were named as the grand award winners at the annual science fair.

Elections for the senior class officers were held in May with the following results: President Douglas Mello; Vice-President Paul Gibson; Secretary Bernice Barnaby; Councillors Charlotte Kalil and Edward Champlin; Editor of the Record Book Ronna Ratner and Business Manager Lawrence Lataif.

The annual Varsity show was staged by the athletes, majorettes and cheerleaders of the school. It was the last annual presentation.

SENIORS 1960-61

Now the graduating class has attained the goal it has been endeavoring to reach for 11 years.

This year was a year of firsts. The "Varsity Shop" was opened to sell various school articles to promote school spirit and the first soccer team ever to be organized at Durfee ended a successful season with six wins and one tie.

Because of the retirement of Mr. Luke Urban, two new coaches made their appearance at Durfee. Coach Don Montle's first season was extremely successful with Durfee ending the football season with a seven win, one loss record, including an unexpected 7-0 win over New Bedford and a tie with Attleboro for the Bristol County Championship. Seniors ending their high school football career were John Sullivan, Lee Woltman, Richard Pavao, Paul Mooney, Gerald Michael, Anthony Arruda, Richard Aguiar, Robert Chlebek, Richard Kehoe, Donald Converse, Harry St. Jean, James Harding, Allan Converse, James McMahon, Ronald Therriault, Roger Levesque, Al Peckham and John McCormick. Lee Woltman, co-captain, was presented with the Jake Reagan Memorial Award at the annual football banquet.

Another victorious season was completed by the basketball team, under the coaching of Mr. Thomas Karam. The Hilltoppers shared the Bristol County Championship with Attleboro and Fairhaven and earned the right to make its 16th Tech Tourney appearance in 17 years. Durfee successfully beat Arlington in the preliminary round, Lawrence Central in the quarter final and Beverly in the semi-final. In the final, Durfee bowed out to New Bedford, but everyone recognized a great Durfee team.

Appointed to head The Hilltop staff were Barbara Leonard, editor; Roger Levesque, business manager; and Dan Hurley and Paul Cordeiro, sports editors. Elected as president of Sance was Helen Piekieniak and Michael Walsh was named president of the home room directors.

Honors were received by Thomas Costa, first in both the Greater Fall River Area and Bristol County (district) oratorical contest. Ellen Donnelly won a savings bond with her original essay on crime prevention and Leonard Orabona and Joyce Covey placed second and third place, respectively, in competitive essay writing on life insurance.

Rosemary Quong, S.A.A. president, was chosen to receive the D.A.R. Good Citizenship pin; Paul Cordeiro was elected to represent Durfee on Student Government Day and Louise St. Laurent, National Honor Society president, represented Durfee at the "Classmates Today — Neighbors Tomorrow" program held at Northeastern University.

During this year tribute was paid to our late principal, Mr. Keeley. In honor of his memory, the library in the Technical building was dedicated to Ambrose F. Keeley, who served as Durfee's faithful principal from 1952-1960.

David Trindade and Eugenia Ziotas were named the two highest ranking members of the class. Ninety-five seniors were inducted into the National Honor Society and more honors were attained when David Trindade and Steven Chafitz were named the grand prize winners of the annual science fair.

The memorable events of our last week — Class Day, Graduation and the Prom — will forever remain in our recollections as the climax of our high school days. Remembering past achievements we look forward to the future with confidence and hope.



Left to right, first row—I. Costa, C. Kalil. Seated—E. Keeley, G. Drewniak, D. Borges, R. Quong, M. Sullivan, B. Barnaby. Standing—L. Carreiro, L. St. Laurent, D. Mello, P. Gibson, E. Berube, J. Cook, E. Champlin, M. Walsh.

STUDENTS' ACTIVITIES ASSOCIATION

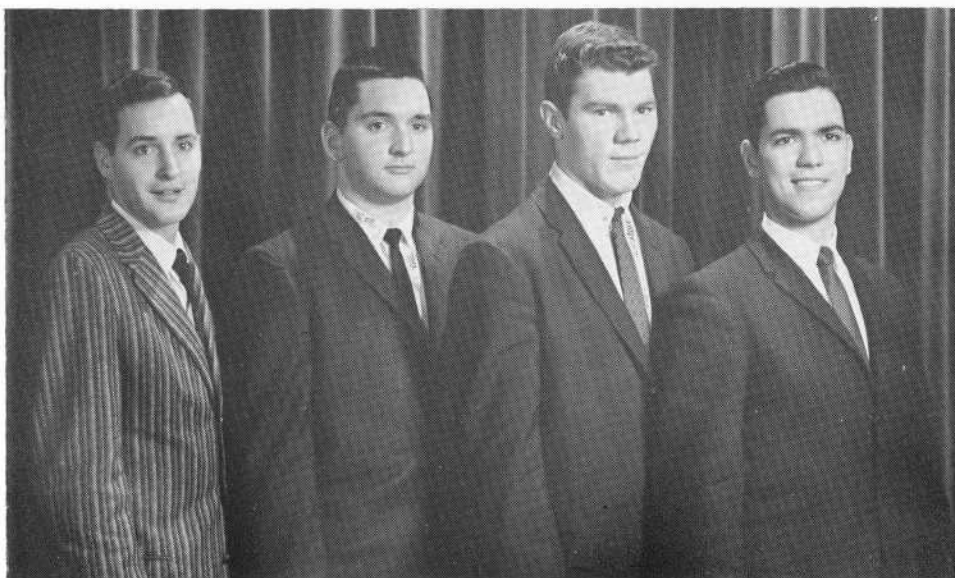
Purpose of the association is to bring student activities under control of a central organization; strive for improvement in the school; provide programs of educational and recreational value, and to cooperate with the administration in maintaining discipline. Governing body is the Student Council.

Officers are President Rosemary Quong '61, Vice-president Diane Borges '62 and Secretary Michael Sullivan '63. The Student Council also includes senior class officers, presidents of other classes and seven councilors.

In September, the council issued S.A.A. guide books to help with the orientation of freshmen and sophomores. A survey on proper clothing in school was conducted. In November and May delegates attended Southeastern Massachusetts student council conventions. On Dec. 5 we sponsored an all-athletic banquet to honor the football team, track team, soccer team, band, majorettes and cheerleaders. This year marked the opening of the Varsity Shop.

The social calendar included the Autumn Swirl, Pigskin Hop, Victory Dance, Christmas Dance, Mid-Winter Hop and Spring Dance.

Advisors are Miss Dorothy Wolstenholme, Mr. John Kiley and Mr. Vincent Fitzgerald.



Left to right—P. Anctil, D. Oliveira, A. Rebello, R. Vasconcellos.

BANK CASHIERS

Since the banking program started at Durfee, Tuesday has been designated as Bank Day. Believing in the maxim, "Plan for the future today," Durfee students increase their savings on this day each week.

Deposits are collected in home rooms during the opening exercises and placed in large envelopes which are delivered to the cashiers in the office of the Durfee building and Technical building.

The cashiers list the amounts deposited by each home room and place the envelopes in specially designed bank bags which are then locked and taken to the B. M. C. Durfee Trust Company by bank agents.

For the first time Miss Katherine L. Hogan, faculty director of this activity, selected four boys to be bank cashiers. They were Paul Anctil, David Oliveira, Alfred Rebello and Richard Vasconcellos.



Left to right—C. Los, A. Rooney, T. Manteiga.

BUSINESS CLUB

In 1929 the Business Education Club was organized and since that time its members have taken an active part in school activities. Membership is limited to seniors who receive 80 per cent or higher in two four or five-period subjects, with no grade lower than 70 per cent. At the end of the third term juniors who meet the above qualifications are admitted to the club.

During the past year graduates from the Business Education curriculum were invited to speak to the members at their meetings and at an assembly for all Business Education seniors. During January and March the NOMA spelling tests were given to the seniors. A field trip to the John Hancock Insurance Company in Boston was held in May, an Awards Assembly in June, and a tea was given for senior members by the juniors just before graduation.

Club officers for the year were: President Angela Rooney, Vice-President and Secretary Camilla Los; Treasurer Theresa Manteiga, and Historian Irene Wisz. Miss Katherine L. Hogan, head of the Business Department, is faculty advisor assisted by Miss Grace Dunn and Miss Anna L. Sullivan of the Business Education faculty.



CAMERA CLUB

Left to right, first row—J. Grey, M. Leite, A. Laroche, R. Schenck, B. Oliveira, R. Zima. Second row—A. Rebello, N. Marum, J. Botelho, C. Mills, D. Browne, M. Banville, W. Hutchins, M. Pereira, B. Felix, B. Savage, M. Landry. Third row—B. Swist, V. Briand, J. Shaw, S. Bramorski, B. Quintal, J. Shaw.



CHESS CLUB

Left to right, first row—T. Braga, H. Moskowitz, D. Cook. Second row—R. Victor, E. Czepiel, J. Antunes, E. Mekelburg, C. Morris, W. Lyons, H. Chopp.



Left to right, first row—L. Heimann, C. Antone, R. Zawrotny, H. Piekieniak, J. Black, S. Smith. Second row—L. St. Laurent, J. Cabral, D. Cahill, E. Ziotas, M. Learned, P. Wrobel. Third row—J. Ferreira, J. Gebski, M. Sullivan, W. Pobzeznik, D. Trindade, L. Lataif, S. Shulman, E. Champlin, C. Taylor.

CLASSICAL CLUB

The Classical Club was founded in October, 1955, to foster interest in the language, literature, and civilization of ancient Greece and Rome through pleasurable activities. The officers for 1960-1961 are Eugenia Ziotas, consul (president); Dorothy Cahill, praetor for two years (vice-president); Marilyn Learned, censor (secretary) and Judith Cabral, curule aedile (program chairman).

The following have provided entertainment: Edward Champlin, Lawrence Lataif, Wayne Pobzeznik, David Trindade and Eugenia Ziotas. The following members have served on committees: Cynthia Antone, Joyce Covey, Joyce Ferreira, Jeremie Green, Lillian Heimann, Matthew Kieron, Douglas Mello, Helena Nunes, Helen Piekieniak, Selma Smith, Maryrose Sullivan, Carol Taylor, Ruth Zawrotny and Eugenia Ziotas.

The faculty advisor is Mr. A. Wilson Whitman.



DRAMATICS CLUB

Left to right, first row—S. Yoken, M. Thaler, A. Curran, D. Browne, J. Bedard,
Second row—R. Clement, S. Chafitz, C. Miville, J. Marconi.



WORLD HISTORY CLUB

Left to right—B. Raposo, T. Matko, D. Hurley.



Left to right—L. Labecki, M. Thaler, N. Tepper, D. Froias.

FRENCH CLUB

Officers of this small but active organization are Mona Thaler, president; Nancy Tepper, vice-president; Lillian Labecki, secretary, and David Froias, program chairman.

Programs presented at each meeting take the form of a lecture, showing of color slides of France, a recorded French story or French charades. Their purpose is to acquaint the members with French language and culture.

Various new projects have been undertaken during the year. One of these has been corresponding with pen-pals in France.



Left to right, first row—J. Roderigues, C. Antone, G. Ayash, J. Leibowitz, L. Heimann. Second row—M. Wisemon, B. Mellor, D. Poritz, G. Bedrick, S. Yoken, J. Uditsky, J. Commeau. Third row—J. Marconi, E. Maynard, R. Brooks, I. Blacker, J. Symons, P. Wargat, B. Mintz, C. Garant, W. Lyons.

GERMAN CLUB

Der Deutsche Verein, organized to stimulate interest in German culture, is open to all who have studied or are studying German. Meetings this year have been highlighted by German conversation among the members.

Two members who have had the privilege of living in Germany have explained the interesting customs of the nation. Also, the club planned various social activities during the year.

Officers are Gerald Bedrick, president; Dorothy Poritz, vice-president; Stephen Yoken, secretary, and Janice Uditsky, program chairman.



Left to right—C. Kalil, D. Cahill, P. Mello, M. Travis.

HEALTH CLUB

This group is a subordinate of the Sanitation Commission. During the academic year 1958 - 1959 the club, under the leadership of President Irene Almeida, Vice-president Patricia Mello, Secretary Dorothy Cahill, and Councilors Charlotte Kalil and Madeline Travis, contributed to maintenance of the laws of the Sanitation Commission.

A display was arranged in the library corridor for the promotion of better health.

Faculty advisor is Miss Angeline B. Crispo.



Left to right, first row—D. Mendonca, A. Rooney, B. Leonard, D. Hurley. Second row—R. Ratner, J. Coelho, J. Monsour, N. Buba, F. Gardella.

THE HILLTOP

The Hilltop completed its 39th year of publication this June. It is the bi-monthly newspaper published by the Journalism II class.

Barbara Leonard headed the staff as editor-in-chief and Roger Levesque, the business manager, handled advertising. Co-sports editors were Paul Cordeiro and Daniel Hurley. Daniel Mendonca was the news editor.

Frances Gardella and Angela Rooney wrote the question and answer column, "Quote . . . Unquote." "Between Buildings" was written by Nancy Buba and Sandra Martin. Gail Woodward and Ronna Ratner joined to write "From 8 'til 2" while Jeannie Coelho and Joan Monsour wrote "Highlights on the Hill."

Faculty advisor is Mr. John T. Crowley.



M. Walsh, R. Williston

HOME ROOM DIRECTORS

Home room directors form the largest organization of students in the school. They perform many duties, assisting teachers in checking attendance, reading bulletins and encouraging participation in extra-curricular activities.

Early in the year each home room elects a boy and a girl director. From among the seniors a president is elected; from the juniors, a vice-president - secretary. The president automatically becomes a member of the Student Council.

This year the group has been led by Michael Walsh, president, and Robert Williston, vice-president - secretary.

Miss Mildred V. Carroll is faculty advisor.



Left to right, front—E. McCoy, M. Sullivan, R. Wagner, L. Heimann, J. Black.
Rear—D. Moniz, N. Sarno, M. Bednarz, M. Banneville.

JUNIOR RED CROSS

The Junior Red Cross is made up of students of all classes who are interested in participating in many worthwhile community-wide projects.

The first major function of the council each year is to conduct the annual three-day enrollment drive. More than 1,000 students became Junior Red Cross members this past Fall.

Another Durfee project initiated each year is the Junior Aid Program in which many girls devote one hour each week doing volunteer work in local hospitals. A similar program is carried on in the orphanages.

Michael Bednarz is in complete charge of "Juniors Speak", a 15-minute program heard once a week over a local radio station.

The Red Cross Chapter House is always willing to assist by providing guest speakers and interesting films for the regular meetings, each of which is chairmanned by an officer of the Durfee Council.

The officers are President Maryrose Sullivan, Vice-president Lillian Heimann, Secretary Marguerite Banville, Councillors Judy Black and Raymond Wagner. Faculty advisor is Mrs. Mary Y. Kostas.



Left to right, first row—D. Mullen, D. Strollo, N. Barboza, C. Metras, M. Earle, J. Belanger, P. Berger. Second row—C. Ferland, C. Simon, E. Shaw, L. Labecki, L. Daley, B. Clark, E. Moniz, J. Rodrigues, C. Moniz. Third row—A. Ragonesi, C. Ferris, J. Caperonis, F. Dagata, D. Trindade, J. Mastin, D. Froias, M. Learned, N. Tepper, A. Bliss, D. Massoud, L. Marum.

LIBRARY AIDES

The Library Aides under the direction of Miss Carrie T. Foulkes are organized to aid students in their use of the library. A familiar part of a student's high school life, the library provides a place for the acquisition of knowledge and for leisure reading. Students use the many available facilities for reports and research work. Out of the 5,684 single volumes and 13 sets of encyclopedias a student has a wide variety from which he may choose.

Each year the Aides with the co-operation of the various clubs decorate the library corridor with interesting and informative displays. Among these was the Science Club display, Portuguese, French and Music Clubs.

In addition to assisting these clubs, the Aides have many displays of their own. This year's agenda consisted of one during U. N. month, one during Book Week, one on the Civil War, and the traditional Christmas display.

Through his work in the library, the Aide learns to appreciate the vast amount of knowledge which may be obtained in our school library. He learns how to use the facilities of the library to their fullest extent, and by helping other students, he is able to gain experience which is beneficial to him in his own studies now and throughout his life.

Although they have many chores and obligations to the students using the library, the Aides are not just a working group. They have monthly meetings, give reports on the new books purchased, participate in an annual radio program and engage in informal discussions. The Christmas and beach parties are the social highlights of the year for the Aides.

Miss Carrie T. Foulkes is faculty advisor.



Left to right—W. Pobzeznik, M. Learned, E. Guay.

MATHEMATICS CLUB

The Mathematics Club is an organization the primary function of which is to stimulate an interest in mathematics. The club is under the direction of Mr. Edward Carey and Mr. John Hrinko, faculty advisors. The officers include President Wayne Pobzeznik, Vice-president Earnest Guay and Sacretary Marilyn C. Learned.

The club has had various guest speakers. Mr. Wesley Crawley, assistant manager of the Fall River National Bank, spoke on the mathematics involved in banking. Mr. Joseph McManus, a realtor, spoke on "Borrowing and Buying Money at the Right Price", and Mr. Packer, district manager of the Social Security Administration, explained the various aspects of the Social Security Program.

In April, some students from the Mathematics Club participated in the regional mathematics tournament in Newton.



Left to right—L. St. Laurent, G. Michael, D. Cahill.

NATIONAL HONOR SOCIETY

The National Honor Society is the only organization at Durfee to which students are elected on the basis of scholarship, leadership, character and service. Each Spring, juniors and seniors chosen from the upper 25 per cent of their classes are inducted into Mu Kappa Delta Chapter at a formal ceremony. In a traditional manner the four characteristics of the members are symbolized by the lighting of four torches.

The society holds two social functions during the year, a coffee hour in the Fall, and a silver tea in the Spring. This year, under the leadership of Louise St. Laurent, president; Gerald Michael, vice-president; and Dorothy Cahill, secretary, an assembly has been planned that will challenge the quick wit of participants.

Throughout the year, senior members have also continued the tutoring service which is available to those students who have been absent from school because of prolonged illness.

Faculty advisors are Miss Yolande B. Laliberte, Miss Mildred V. Carroll and Principal Robert J. Nagle.



Left to right, first row—M. Andrade, A. Mello, M. Dias. Second row—G. Rezendes, P. Pereira, P. Medeiros.

PORTUGUESE CLUB

Recently the Portuguese classes were honored by a visit from the very distinguished Dr. F. Smith, director of the Brazilian Institute at New York University. Dr. Smith spoke on the importance of the Portuguese language and the character and customs of the Brazilian inhabitants.

His purpose was to acquaint the students taking Portuguese with the Brazilian scholarship which New York University offers to any pupil who has had Portuguese. It is necessary that the test be taken at the close of the sophomore year at college.

If the student fulfills the requirements — the ability to speak and write Portuguese fluently, to attain high scholastic merit, and to be attending an accredited college — he is then eligible to try for a full year's scholarship at a university in Brazil.

Dr. Smith was accompanied by Mr. Perry, a college student from New Bedford who had previously won this scholarship. Mr. Perry related in Portuguese the incidents which had occurred to him while he was studying in another country.



Left to right—S. Barnes, J. Covey, H. Piekielniak, M. Arruda, J. LePage, M. Dumoulin.

SANITATION COMMISSION

The Sanitation Commission or Sanco functioned under the guidance of Miss Angeline B. Crispo, advisor, and Helen Piekielniak, president. The officers elected were Vice-president Jeannette LePage and Secretary Marie Arruda.

This year the organization, comprised of health councillors from each home room, worked to maintain and improve health and sanitation in the school.



Left to right—P. Wrobel, D. Trindade, B. Simoes, E. Guay.

SCIENCE CLUB

The Science Club has had a very prosperous year. Under the capable direction of the advisor, James W. Pelletier and the new officers, President David C. Trindade, Vice-President Beverly Simoes, Secretary Patricia Wrobel, and Treasurer Ernest Guay — the club was completely reorganized. It is now one of the most active organizations in the school.

The club held an unprecedented dinner-dance during the Christmas vacation for its members. The club also visited Stonehill College on Science Day. The meetings usually featured speakers, both invited guests and students, or science films.

Plans for the latter half of the year include an assembly for science students at which an M.I.T. professor will speak, a visit to the State Science Fair and Science Park, regular use of the school observatory, meetings at industries and science companies, and the annual club picnic.



Left to right, first row—D. Cahill, R. Bleau, E. Durfee, B. Quintal, L. St. Laurent, N. Beattie. Second row—R. Levesque, M. Silvia, M. Thaler, P. Cordeiro, B. Leonard, B. Motta, R. Vasconcellos. Third row—P. Ponte, L. Lataif, T. Couto, C. Miville, S. Davidson, D. Trindade, H. Moskowitz, E. Champlin, J. Bedard.

SPEAKERS' BUREAU

The main purpose of the Speakers' Bureau is to promote better public speaking at Durfee. Students are invited to join the club if they show proficiency in English and have some ability in public speaking. To gain confidence before an audience and acquire experience from listening to others, two members of the club are called upon at each meeting to give prepared speeches on topics which they choose themselves.

The topics this year were especially diverse in scope, ranging from a discussion on religion to one on horses. Members of the club are fortunate because they not only gain valuable experience in speech making, but also are able to enjoy the many interesting speeches of other members.

The highlight of 1960-1961 was the political panel discussion held in the Technical Auditorium just a few days before the Presidential election. It was open to all Durfee students. The panel consisted of Edward Champlin, Louise St. Laurent, Mona Thaler, James Bedard, Thomas Costa and Betty Ann Keeley. The moderator was Lawrence Lataif. After the discussion members of the audience were allowed to vote for the candidate of their choice.

The Speakers' Bureau meets on the first and third Friday of every month in room 305. The officers for 1960-1961 were President Paul Cordeiro, Vice-president Thomas Costa and Secretary Kathleen Moore.



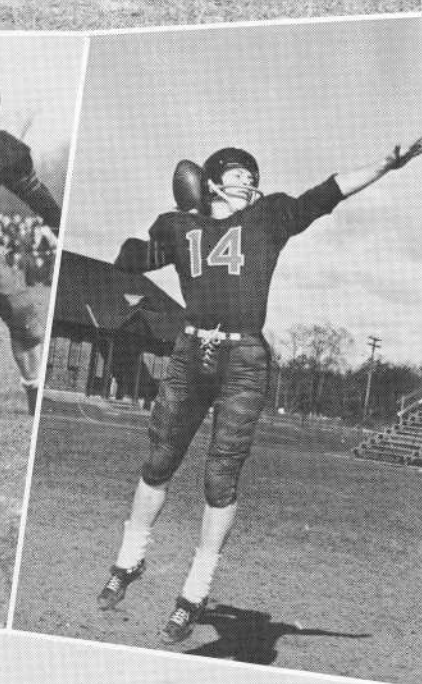
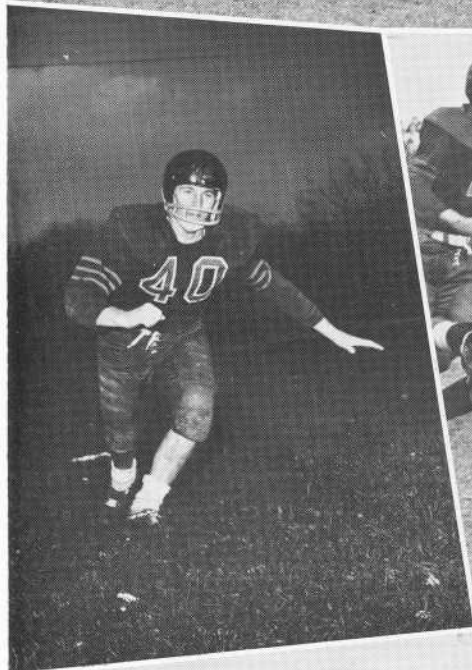
SILVERTONES

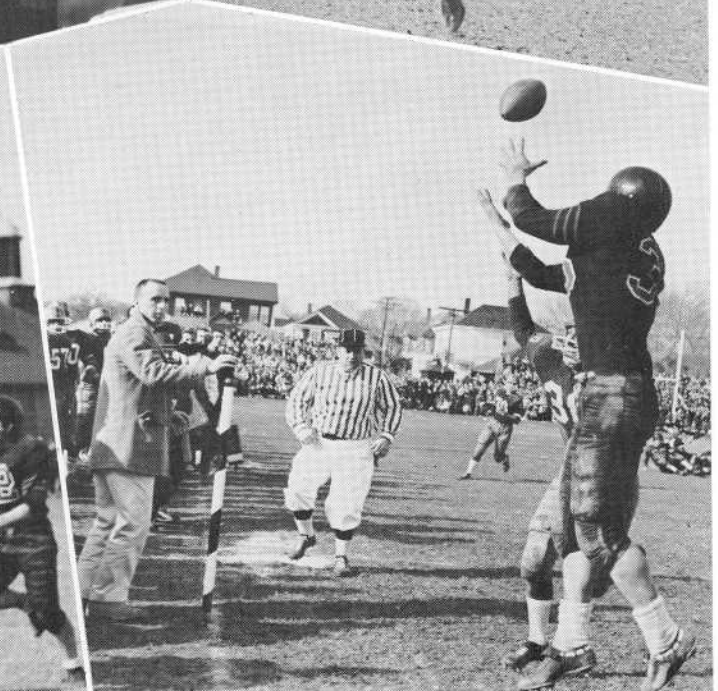
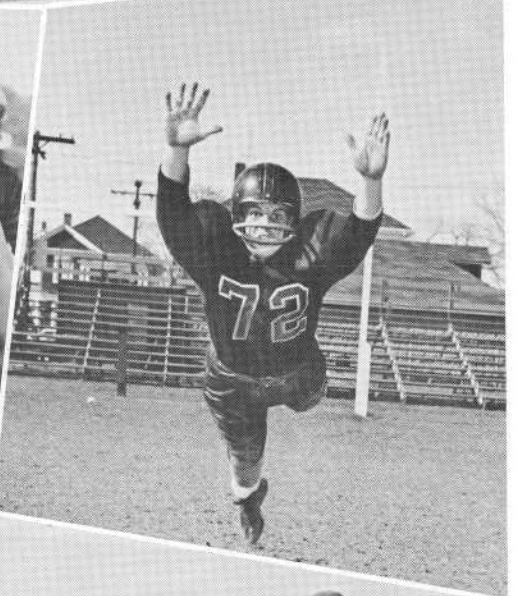
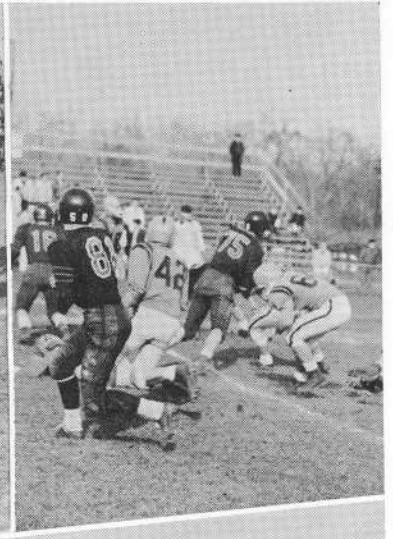
Left to right, first row—P. Sanson, J. Belisle. Second row—G. Terceira, M. Ladeira, E. Deschenes, H. Scully, P. Miranda, M. DeSouto. Third row—N. Mortimer, P. Martin, S. Fearnley, C. Soares, J. West, J. Deschenes, J. Uditsky, J. Moquin.

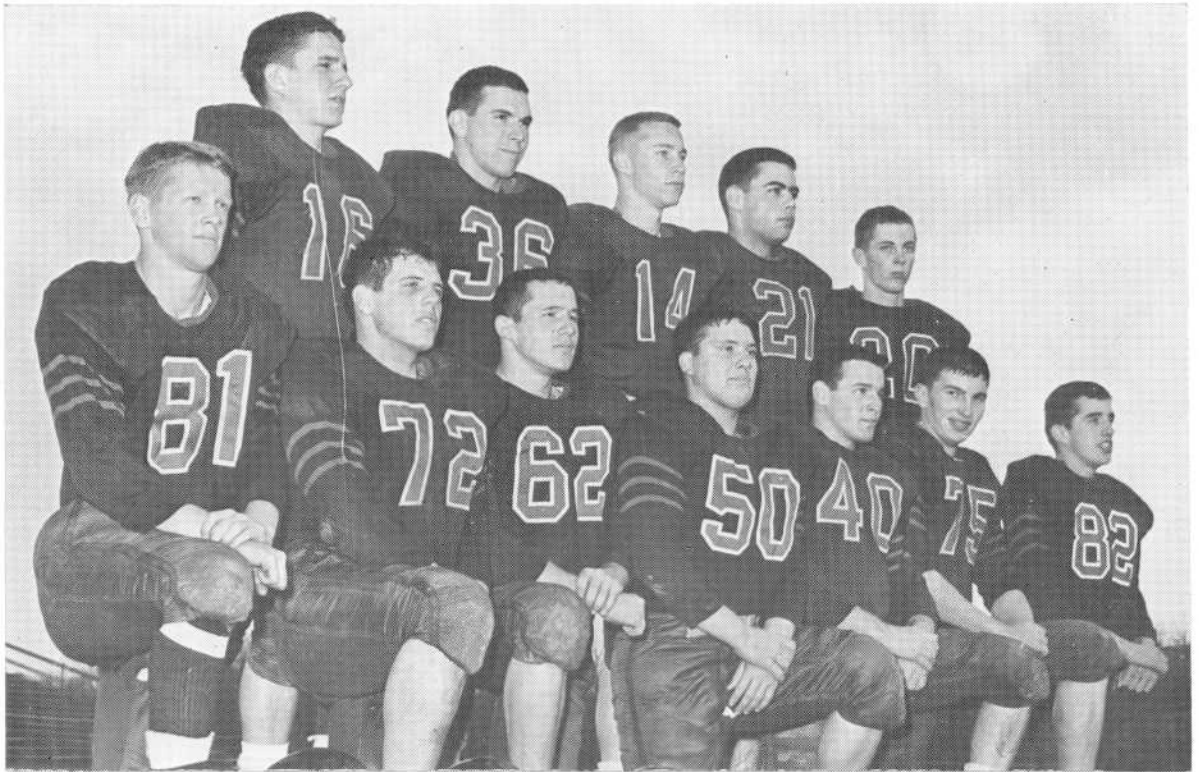


VOCALAIRES

Left to right, first row—N. Barboza, J. Higgins, S. Cohen, N. L'Archevesque. Second row—L. Corr, S. Hart, A. Cruz, R. Brooks, C. Gregory. Third row—P. Chapman, C. Ferris, G. Gomes, B. Gladu, N. Tobol.







VARSITY

Left to right, kneeling—R. Chlebek, A. Arruda, R. Therriault, H. St. Jean, R. Pavao, R. Kehoe, D. Carey. Standing—J. McMahon, L. Woltman, J. Sullivan, A. Ferrance, P. Mooney.



SECOND TEAM

Left to right, kneeling—R. Aguiar, A. Peckham, A. Levesque, P. Riley, J. McCormick, M. Carey, D. Converse, T. McMahon. Standing—A. Converse, G. Michael, R. Williston, P. Mooney, J. Harding, D. Botelho, M. Ryan, R. Buffington.

1960 FOOTBALL SEASON

A fighting Hilltopper squad, determined to justify the faith of its young new coach, Mr. Donald Montle, came roaring back from a winless 1959 season to capture a tie for the Bristol County Championship, topping it off with a stirring last-minute triumph over a heavier and numerically larger New Bedford squad.

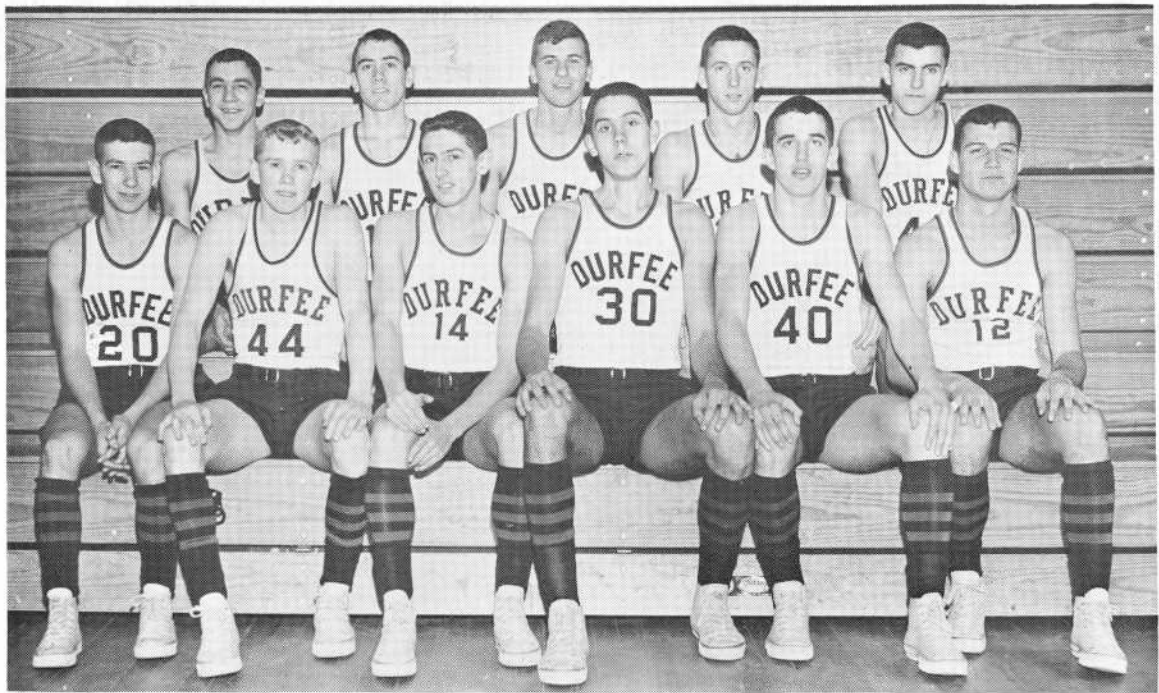
Attleboro, pre-season favorite to win Bristol County honors, fell first before the balanced onslaught of an inspired Durfee High eleven. Down 8-0 in the second half, a savage-charging Durfee line played ironman football, as swift plowing backs refused to be contained.

The final score was Durfee 14, Attleboro 8.

North Attleboro, Dartmouth, New Bedford Voke, Fairhaven and Taunton next fell before the determined Hilltoppers. Our only loss was the upset by Coyle High School in Taunton.

Before a near-record crowd of over 12,000, a starting Red and Black team made up of nine seniors and two juniors won by a score of 7-0 over New Bedford on Thanksgiving Day. The team consisted of ends Don Carey and Bob Chlebec, tackles Dick Kehoe and Tony Arruda, guards Co-captain Rick Pavao and Ron Theriault, center Harry St. Jean, right halfback Co-captain Lee Woltman, left halfback Jimmy McMahon, fullback Art Ferrance and quarterback John Sullivan. Paul Mooney, defensive safety, Rick Aguiar at end and Al Levesque at guard saw heavy action throughout the game.

Under Coach Don Montle's relentless conditioning program, the entire squad came through the season without a single major injury and succeeded in placing six men on the All-Bristol County team. They were Ron Theriault, guard; Dick Kehoe and Tony Arruda, tackles; Don Carey, end; Lee Woltman, right-halfback and John Sullivan, quarterback.



Seated, left to right—G. Drewniak, W. Golden, M. Megna, M. Papoula, D. Carey, R. Oliveira. Standing—R. Rapoza, B. Machado, J. Caldeira, E. Berube, J. Isador.

BASKETBALL

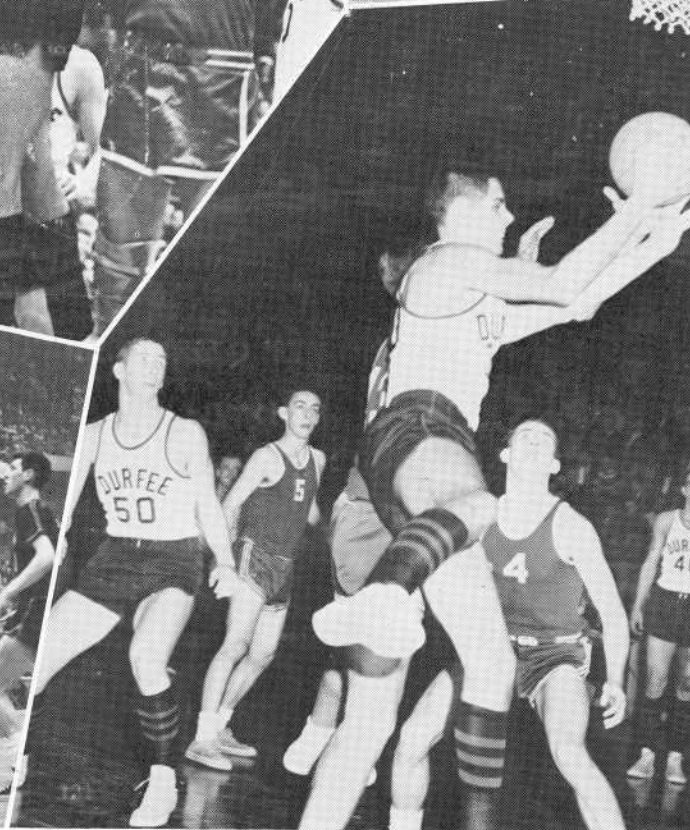
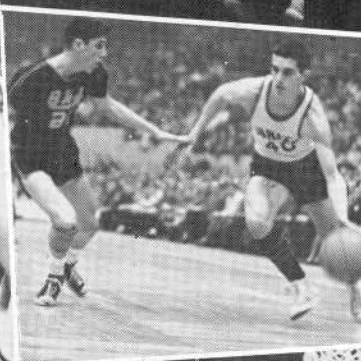
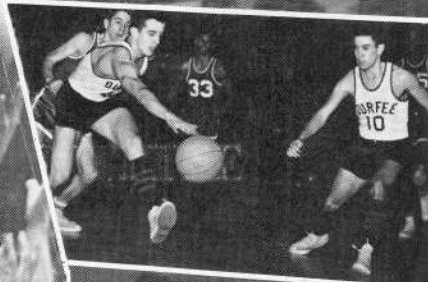
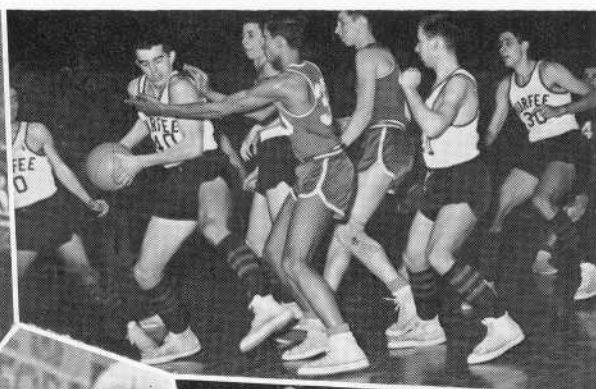
As in football, the eyes of the entire Bristol County League focused on a young new Durfee coach, Mr. Thomas Karam, and a cool, ball-controlling starting quintet of four juniors and one sophomore which steam-rolled its way to 16 straight victories before bowing to Fairhaven and Attleboro for its only two season losses. For the first time in Bristol County League records, there was a triple tie for County honors, Durfee tying with Fairhaven and Attleboro for first place.

The Hilltop quintet showed its mettle at the Eastern Mass. tournament at Boston Garden by decisive wins over Arlington, Lawrence Central and Beverley, all of greater Boston.

Another "first" was registered at the Garden when Durfee tackled New Bedford in an All-Bristol County final. The Red and Black lost a heart-breaker to a much taller New Bedford five, which had bowed to our boys earlier in the season.

The starting lineup had Manny Papoula at center, Barry Machado and Gary Drewniak at the guard posts, with Don Carey and Woody Berube at forwards, Caldeira doing yeoman utility work throughout the season.

Papoula, Berube and Carey captured All-County honors.



BASEBALL

Coach Montle is looking forward to a successful baseball season with only two members of last year's Bristol County champs lost through graduation.

A strong veteran nine with depth at every position is pointing toward top honors once again. Returning are Dick Kehoe, catcher; Barry Machado, catcher or right fielder; Lee Woltman, first base; Gary Drewniak, shortstop; Art Ferrance and Doug Mello at third base; John Sullivan and Ron Theriault, outfielders, plus a strong pitching staff of Terry Lomax, Woody Berube, Lefty Mello and Carl Viens. At this point, Bill Golden looks like a potential infield starter.

TRACK

Coach Clinton Borden is whipping a hard-working track team into shape as they prepare to defend their Bristol County League championship.

Seniors who make up this year's squad are Capt. Paul Mooney, Gerald Michael, John McCormick, Paul Gibson, Joe Cote, Don Perry, Pete Levesque, Bob Whalley, Don Converse and Al Peckham.

TENNIS

This year's tennis team ought to fare well under Coach Frank Jordan. The returning senior members are David Trindade, Herbert Moskowitz, Joe Macy, Fred Curt, Ken Ainsworth, Dave Froias and Ernie Moniz.

GOLF

Durfee joins five other teams competing in the Bristol Scholastic Golf League. Stiff competition is expected from New Bedford, New Bedford Voke, Dartmouth, Taunton and Coyle.

With Joe Read as the only returning veteran, Coach Nugent is banking on strong support from 20 candidates presently on hand. A building year is looked for. Last year, Durfee placed second in the league but won the Golf Day Meet and with it, the trophy awarded by the Touchdown Club of New Bedford.

SOCCER

For the first time in Durfee's athletic history, the school was represented by a soccer team. Coached by Mr. David Sullivan, the booters compiled a season's record of seven wins, no losses and a tie. Opposition included some of the finest soccer powers in the area, such as St. George and Portsmouth Priory.

Senior members of the squad who received letters at the football banquet are Leroy Bundy, Frank Santos, Frank Seringa and Jim Welsh.



CHEERLEADERS

Left to right, front—S. Oldrid, M. Cabeceiras, D. McCrossan, G. Mello, D. Borges.
Rear—M. Cotter, J. Flynn, B. Barnaby.



MAJORETTES

Left to right, front—N. Kocor, S. Barnes, P. Lambert. Standing—J. Gonsalves,
J. Gazzaro, S. Sampson, B. Bailey, C. Kalil.



Left to right, kneeling—A. Healy, G. Bradbury, A. Harding, J. Moquin, S. Banks. Standing—M. Dumoulin, H. Piekielniak, D. Gesner, J. Friar, A. Ziotas, J. Buron, J. Brabant, K. Leyland.

GIRLS' BASKETBALL

The objective of the Girls' Varsity Basketball Team is to develop a healthy competitive spirit along with promoting a better understanding of girls' athletics.

This season the varsity team started with two veteran forwards. In a scrimmage game Durfee met Taunton late in November and then proceeded to play a 10-game schedule with member schools of the Bristol County Girls' League.



Left to right, first row—B. Medeiros, K. Gold. Second row—H. Piekieniak, A. Harding, C. Antone, R. Zawrotny, S. Shulman, M. Dumoulin. Third row—S. Smith, J. Moquin, M. Ventura, E. Ziotas, J. Ferreira, A. Healy, G. Bradbury.

GIRLS' NUMERAL CLUB

This organization endeavors to promote social development and good sportsmanship through leadership and participation in athletics. Its chief object is to develop adept leaders who can conduct classes in the gymnasium, officiate at various sports activities and assist at other schools in the area.

In the Fall we offered a badminton singles tournament which was followed by volleyball competition. In connection with the basketball season we sponsored the Sophomore Basketball Tournament. Some members attended a refereeing course, enabling us to serve as officials and coaches for the tourney. The remaining program consisted of fistball and softball.

Our school year was climaxed by an outing in the country. Each girl who successfully fulfilled membership requirements received an award of either a silver basketball, G. N. C. shield or numerals.

The officers are President Gail Bradbury, Vice-President Josephine Moquin and Secretary Ruth Zawrotny. The faculty advisor is Miss Virginia W. Frost.

ACKNOWLEDGEMENT

The editor and staff of this publication are indeed grateful to many people who have aided our efforts to make it a success.

Particularly we thank our classmates and the several club officers and advisors for their promptness in turning in glossies and pertinent information; the printers, binders, engravers and photographers for their cooperation in producing this book; the Fall River Herald News for supplying valuable photographs, especially of athletic activities; the advertisers whose patronage has aided us financially; Miss Katherine L. Hogan and Mr. John T. Crowley,, faculty advisors, who have most generously given their time and effort, and to whom the entire senior class is thankful.

BEST WISHES
from
ANAWAN SOCIAL COMMITTEE
of
FALL RIVER AREA
C. Y. O.



President, DOUGLAS MELLO '61
Vice President, JOHN SULLIVAN '61
Treasurer, PAUL RAYMOND
Secretary MAUREEN D'ANDREA

SUCCESS
To the Class of 1961

Fall River Area
Catholic Youth
Organization

President, MICHEL METHOT
Secretary FLORENCE SOARES '61
Vice President, RITA CASTANHO
Treasurer, WALTER NICHIPOR '63

SUCCESS . . .

To The Class of 1961

LORING STUDIOS

392 SPRING STREET

Opposite St. Mary's Cathedral

Telephone OS 8-5022

GAMMA CHAPTER

of the

TRI - HI - Y

OFFICERS

President	Patricia Mello
Vice-President	Selma Smith
Secretary	Madeline Pascoal
Treasurer	Diane Borges
Chaplain	Diana Mullen

SOPHOMORE MEMBERS

Priscilla Allard
Jeanne Belanger
Maureen Camara
Alice Cloutier
Ingebord Costa
Ann Dessert
Barbara Duquette
Cynthia Medeiros
Lois Pieroni
Susan Smith

JUNIOR MEMBERS

Patricia Camara
Joyce Cambra
Sandra Davis
Carolyn Dean
Alice Eastwood
Mary Jane Medeiros
Patricia Medeiros
Carol Mills
Mary Perreira
Evelyn Simon

CONGRATULATIONS

TO THE

CLASS OF 1961

DURFEE HIGH BOOSTERS CLUB

Organized 1954

BEST WISHES
TO
CLASS OF 1961

FROM
FALL RIVER KNITTING MILLS

CONGRATULATIONS TO
CLASS OF 1961

DURFEE - BUFFINTON INSURANCE AGENCY, INC.

10 PURCHASE STREET

A. T. Buffinton

Walter A. Brown, Jr.

Arthur E. Mead

OS 9-6486

OS 5-7481

Telephone OSborne 2-2861

**NORA'S
COLONIAL RESTAURANT**

HOME COOKING

162 BANK STREET

FALL RIVER, MASS.

Owned and Operated by
Walter J. and Nancy E. Smith

BEST WISHES
TO
CLASS OF 1961

EVERETT MOTORS

880 SOUTH MAIN STREET

OLDSMOBILE

F-85

CADILLAC

BETA TRI - HI - Y

President Cheryl Gonsalves
Vice-President Judi Gorton
Secretary Susan Oldrid
Treasurer Valerie Smith

SCOTTIES

President Judith Oliveira
Vice-President Joanne Dewsnap
Secretary Evelyn Carreira
Treasurer Eileen Roderigues
Publicity Sandra Gagnon
Chaplain Sandra Paradise

SENIOR MEMBERS

Judith Oliveira

Joanne Dewsnap

Sandra Gagnon

ALMATER TRI-HI-Y

President Marjorie Dumoulin
Vice-President Rosemary Platt
Secretary Margaret Walsh
Treasurer Gail Bradbury
Chaplain Barbara Medeiros

HONORARY MEMBERS

Priscilla Braley
Carol Buffington

MEMBERS

Eleanor Durfee
Janice Dygas
Joyce Ferreira
Janet Friar
Joan LePage
Mary Jane Pacheco
Barbara Quintal

Compliments of

FALL RIVER HERALD NEWS

Compliments of

**GLOBE MANUFACTURING
COMPANY**

BEST WISHES

FROM

**DURFEE EMPIRE CENTER
THEATRES
AND
CAPITOL BOWLING LANES**

Compliments of

CHERRY'S

149 SOUTH MAIN STREET

Fall River's
Leading Fashion Store

Compliments

of

R. A. McWHIRR COMPANY

169 SOUTH MAIN STREET

Fall River's
Largest Department Store

Compliments of

MY OWN QUALITY BAKERY

345 ROBESON STREET

Mr. and Mrs. Israel Lipson

VIVE

President Barbara Grinnell
Vice-President Lisa Olson
Secretary Harriet Chase
Treasurer Nancy Mortimer

SENIOR MEMBERS

Sheryll Barnes
Roberta Healy
Shirley Kennedy
Cynthia Loudon
Donna McCrossan
Carole Ratcliffe
Lynne Robinson
Sally Sampson
Elizabeth Westgate

ALPHA TRI - HI - Y

President Rita Santos
Vice-President Patricia Almeida
Treasurer Linda Rapoza
Secretary Carolyn Keshura
Chaplain Theresa Rodrigues

MEMBERS

Beverly Astle
Mary Correia
Jeannette Dupont
Barbara Felix
Ann Marie LaRoche
Theresa Manteiga
Priscilla Falandys
Maryanne Sledziewski
Pauline Silvia
Madeline Vieira

Best Wishes

from

Walter C. Frazee Co.

9 North Main Street

Hall's Music Shop

169 North Main Street

Everything for the music lover

CONGRATULATIONS

TO

CLASS OF 1961

Y. M. C. A.

Compliments of

SWANSEA ALLEYS

SOMERSET ALLEYS

EMPIRE ALLEYS

VENUS DE MILO

BEST OF LUCK
from
LEON C. MELLO

Bridal Room Printers
WEDDING INVITATIONS—PRINTING
165 Jepson Street—off Pleasant
OS. 3-5536

FALL RIVER'S
MOST MODERN PHOTO LAB
Sousa's Photo Service
161 Pleasant Street

Compliments
of
Stevenson's

OSborne 3-3957

Torchia Photographs
Portraits — Weddings — Commercial
Graduation Portraits
368 South Main Street
Fall River, Mass.

COMPLIMENTS OF
Speedwell Farms
Ice Cream, Inc.
Leo H. Berube, Treas.
—BUY FALL RIVER—

Robert A. Wilcox Co.
22 Bedford Street
STATIONERY
SCHOOL SUPPLIES

Tel. OS. 9-6161 Evenings by Appointment

Robert's Fur and Formal Shop
FULL DRESS RENTAL SERVICE
White Tuxedo Jackets — Tuxedo —
Tail Coats — Cutaways
and All Accessories
383 SPRING STREET
Next to St. Mary's Cathedral

CONGRATULATIONS
Durfee Bowling Alleys, Inc.
340 Central Street

Lavoie's

JEWELERS — OPTICIANS

238 South Main Street

Corner Spring Street

CONGRATULATIONS

The Bride's Shoppe

"LOOK FOR THE BRIDE IN LIGHTS"

518 South Main Street, Fall River

OSborne 3-7561

Lenor's
"where fashion is first"

COMPLIMENTS OF

the new

Sawyer's

Campus Shop

63 Pleasant Street

CONGRATULATIONS

to the

CLASS OF 1961

Coca-Cola Company

1244 Davol Street

COMPLIMENTS OF

S. S. Kresge Company

Touhey's Pharmacy

202 Rock Street

FALL RIVER, MASS.

Prescription Specialists Since 1883

Jette's Photographers

258 South Main Street

Os. 2-1411

BRIDALS, CANDIDS, COMMERCIAL

DIRECT COLOR

TO THE CLASS OF '61
BEST WISHES FROM EVERYONE
AT



298 South Main Street

Henry J. Feitelberg

INSURANCE
TRAVEL
REAL ESTATE

29 North Main Street Fall River
Tel. Os. 5-7408

Milady's

Bridal Salon and Dress Shop

22 Pleasant Street

Smith Office Equipment

Company

COMPLETE OFFICE OUTFITTERS
46 North Main Street Fall River
Os. 7-9393

Tel. OS 2-5315

Mullen Studio

PROFESSIONAL PHOTOGRAPHERS

Student Specials
Candid
3D-Color
Formal
Portraits and Commercials



130 South Main Street Fall River
Hudner Building

BEST WISHES

FROM

T. Elias Fuel Co., Inc.

52 Oak Grove Avenue

BEST WISHES

FROM

Faria & Son Funeral Home

589 South Main Street

Maury Kusinitz

Chartered Life Underwriter
LIFE AND GENERAL INSURANCE

17 Second Street

Tel. OS. 4-3595

BEST OF LUCK

WHITE'S FAMILY RESTAURANT

WALSH REXALL PHARMACY

ERNEST MELLO, JR., Reg. Ph., Prop.
ARTHUR CAROSELLI, Mgr.
1224 Pleasant Street Fall River, Mass.

VINCENT STUDIO

PROFESSIONAL PHOTOGRAPHERS
391 South Main Street Fall River, Mass.
Tel. OSborne 3-6011
Weddings — Family Groups — Candida
Baby — Communions — Graduations
Natural Color — Heavy Oils

COMPLIMENTS OF

KINNEY SHOE STORE

ROUTE 6 SOMERSET

COMPLIMENTS OF

HOWARD JOHNSON

NORTH WESTPORT OS. 3-3215

COMPLIMENTS OF

ASHTON SPORTING GOODS

YOUR CREDIT IS GOOD AT

LION'S

84 Bedford Street

REGGI FASHIONS

"THE UPSTAIRS SHOP"
161 South Main Street Fall River, Mass.
—Fine Feminine Apparel—
Phone OSborne 8-8762
Apparel for Women, Misses and Juniors

COMPLIMENTS OF

LANE'S BAR-B-QUE

**DUFFY'S PHARMACY
OF TIVERTON**

JAMES F. DUFFY
B.S.—Reg. Pharm.

COMPLIMENTS OF

MARK YOU RESTAURANT

COMPLIMENTS OF

WILLIAM C. HICKEY, '25

**L. LATAIF ORIENTAL RUG CO.
SALES AND SERVICE**

72 Cash Street Os. 3-1572

COMPLIMENTS OF

ADAMS BOOKSTORE, INC.

**BEST WISHES FROM
LEONARD'S PHARMACY**

15 Stafford Road, cor. Plymouth Avenue
Telephones
Os. 4-1781 or Os. 2-9162



What's the meaning of this?

These queer shapes are halftone dots picked at random from a plate and greatly magnified. Seemingly insignificant, these microscopic dots are the prime concern of photo-engravers.

Their perfection is assured with Barbett engravings.

BARBETT PHOTO ENGRAVING CO., INC. 221 W. EXCHANGE ST., PROVIDENCE 3, R. I.

Autographs

Autographs